

OYSTER HARBOUR

NOT TO BE USED FOR NAVIGATION
For more detailed information, refer to Department for Planning and Infrastructure's Nautical Chart Oyster Harbour and Environs PWD, WA. 52659

5 knot speed restriction area

1 **Emu Point:** All the waters of Emu Point Boat Harbour and the approach channel bounded by a line starting from the starboard beacon at **Point A** 34° 59.4837'S, 117° 56.8036'E, then to the port beacon at **Point B** 34° 59.4841'S, 117° 56.8222'E, then to the port beacon at **Point C** 34° 59.6235'S, 117° 56.7180'E at the entrance to the harbour basin, then around the boundary of the harbour basin to **Point D** 34° 59.6829'S, 117° 56.7489'E, **Point E** 34° 59.7103'S, 117° 56.6710'E, **Point F** 34° 59.5650'S, 117° 56.5885'E, **Point G** 34° 59.5355'S, 117° 56.6723'E, and **Point H** 34° 59.6079'S, 117° 56.7099'E, and then back to the start point (all coordinates based on GDA94).

8 knot speed restriction area

2 **Kalgan River:** All the waters of the Kalgan River between the Lower Kalgan Bridge and Upper Kalgan Bridge with the exception of the gazetted water ski area.

3 **Emu Point:** All the waters contained within the channel at Oyster Harbour, from an area south of Emu Point to the approach channel of the Emu Point Boat Harbour. These waters are bounded by a line starting from the port beacon at **Point A** 35° 00.0259'S, 117° 56.8296'E, then to the west cardinal mark at **Point B** 35° 00.0831'S, 117° 56.8982'E, then to the starboard beacons at **Point C** 35° 00.0255'S, 117° 56.9151'E, **Point D** 34° 59.9361'S, 117° 56.9870'E, **Point E** 34° 59.6163'S, 117° 57.1345'E, **Point F** 34° 59.5057'S, 117° 57.1092'E, and **Point G** 34° 59.4405'S, 117° 57.0564'E, then to **Point H** 34° 59.4492'S, 117° 56.8297'E, being on the promulgation of the northern line of the Emu Point Boat Harbour Approach Channel, then to the Starboard beacon at **Point I** 34° 59.4837' 117° 56.8036'E and the port beacon at **Point J** 34° 59.4841'S, 117° 56.8222'E, these being the outer markers of the approach channel, then to port beacons at **Point K** 34° 59.4750'S, 117° 57.0577'E, **Point L** 34° 59.6019'S, 117° 57.1009'E and **Point M** 34° 59.9037'S, 117° 56.9338'E, and then back to the start point (all coordinates based on GDA94).

Personal water craft prohibited practices

4 Personal water craft (PWC) - the practice of personal watercraft freestyle driving, wave jumping and surfing is prohibited in all waters to the west of a line extending north and south from the eastern extremity of Emu Point, with the exception of a rectangular area of King George Sound measuring 300 metres by 400 metres and bounded by yellow buoys, located 100 metres north of Goode Beach on the Vancouver Peninsula and 400 metres south of Mistaken Island.

Water ski areas

Kalgan River: All that portion of the Kalgan River bounded on the south by a line drawn westward from the northern boundary of Plantagenet Location 517 and extending northwards to a line drawn eastwards from the southern boundary of Plantagenet Location 241. This area has been set aside for use by the Western Australian Water Ski Association (Inc) and is under the control of the Albany Water Ski Club.

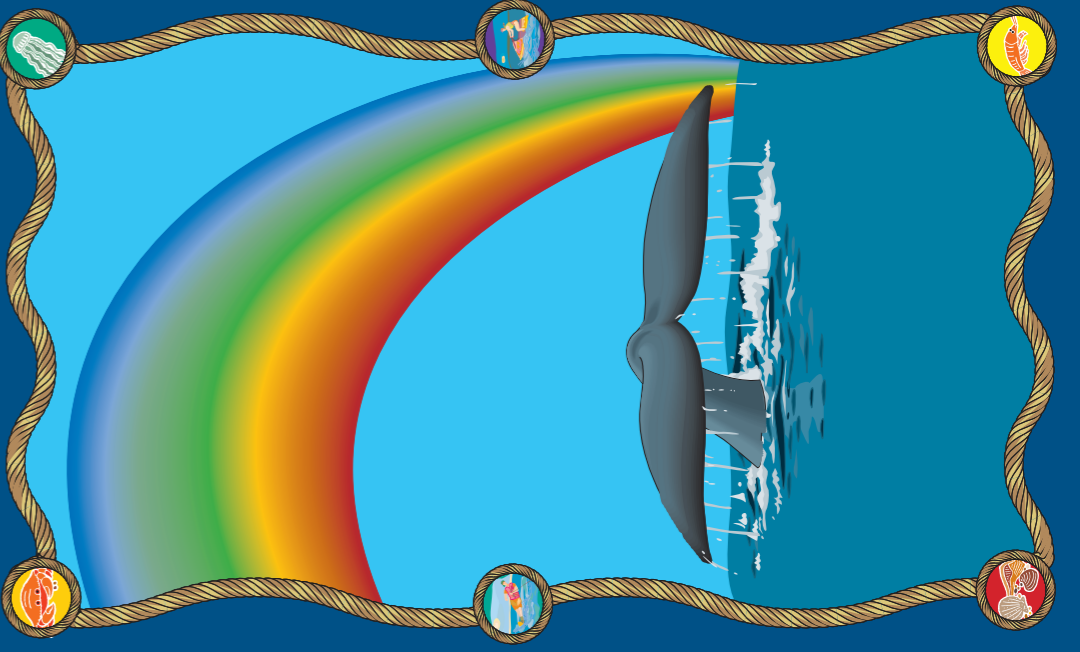
Oyster Harbour: All the waters of Oyster Harbour within a radius of 1350 metres from a point 34° 59.773'S, 117° 58.004'E (all coordinates based on GDA94).

LEGEND

- Shallow Water
- 5 Knot Speed Restricted Area
- 8 Knot Speed Restricted Area
- PWC Freestyling Prohibited Area
- Water Skiing Area
- Aquaculture Lease Area

Government of Western Australia
Department of Transport

Albany Boating Guide



February 2011

Contact Details

Department of Transport	Marine Safety Hotline 1300 863 308
Albany 9892 7333
Fremantle 9216 8999
Marine Operations Centre 9431 1000	Website..... www.transport.wa.gov.au/imate
Department of Fisheries	Albany 9841 7766
Fishwatch 1800 815 507
Website www.fish.wa.gov.au
Department of Environment and Conservation	Albany 9841 7133
Website www.dec.wa.gov.au
Police	Albany 9892 9300
Water Police 9442 8600
Marine Sea Search and Rescue	Albany Head Quarters VMR 610 9844 1005
Emergency 0427 923 557
Albany Hospital 9892 2222	
City of Albany	Office..... 9841 9333
Duty Ranger 9841 9349
Boating Weather Forecasts	Boating Weather..... 1900 969 903
Website www.bom.gov.au

Government of Western Australia
Department of Transport

Required Safety Equipment

	Over 5 Nautical Miles from the mainland shore	2-5 Nautical Miles from the mainland shore	0-2 Nautical Miles from the mainland shore	Protected Waters lakes, rivers, inlets and estuaries except Lake Argyle
Recreational Skipper's Ticket The skipper of a recreational vessel, powered by a motor greater than 4.5kwip (6 hp) must hold an RST.	✓	✓	✓	✓
Blige Pump/Bailer All vessels must carry a bilge pump. Vessels under 7 metres may carry a bailer in lieu of a bilge pump.	✓	✓	✓	✓
Fire Extinguisher Vessels with an inboard engine or carrying hydrocarbon consuming appliances must carry an approved fire extinguisher.	✓	✓	✓	✓
Anchor and line An efficient anchor and line must be carried.	✓	✓	✓	✓
Lifjacket A lifjacket bearing the label PFD Type 1 or the Australian standard AS 1512 or AS 4758 - Level 100 (or higher) must be carried for every person onboard.	✓	✓	✓	✓
Red and Orange Flares At least two hand held red flares and two hand held orange flares must be carried. Two parachute flares may be carried in lieu of the two hand held red flares and a smoke canister may be carried in lieu of the smoke flares.	✓	✓	✓	✓
EPiRB A 406 MHz EPIRB registered with AMSA bearing the standard AS NZS 4280.1 must be carried if proceeding more than 2 miles from the mainland shore or more than 400 metres from an island located more than 2 miles from the mainland shore.	✓	✓	✓	✓
Parachute Flares A minimum of two parachute flares must be carried if operating more than 5 miles from the mainland shore or more than 1 mile from an island located more than 5 miles from the mainland shore.	✓	✓	✓	✓
Marine Radio A marine radio must be carried if operating more than 5 miles from the mainland shore or more than 1 mile from an island located more than 5 miles from the mainland shore. The radio can be 27 MHz VHF or HF.	✓	✓	✓	✓



ALBANY

NOT TO BE USED FOR NAVIGATION

For more detailed information, refer to Department of Transport's Nautical Chart Oyster Harbour and Environs PWD, WA. 52659

Government of Western Australia
Department of Transport

LEGEND

- Shallow Water
- 5 Knot Speed Restricted Area
- 8 Knot Speed Restricted Area
- PWC Freestyling Prohibited Area
- Boating Prohibited Area
- PWC Area
- Water Skiing Area
- Aquaculture Lease Area



Basic rules of the waterways

Vessel Overtaking Another

Every overtaking vessel gives way (this includes sailing vessels)

Power Vessels Meeting Head On

Each vessel alters course to starboard

Power Vessels Meeting

Vessel having the other to starboard gives right of way

Power Meeting Sailing Vessel

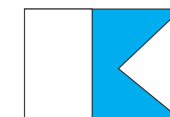
Power gives way to sail except when sailing vessel is overtaking

Boating prohibited area

3 Middleton Beach: All those areas of water contained within an area commencing at a point on the foreshore 25 metres in an easterly direction from the Swimming Jetty and extending for 190 metres offshore in a northerly direction then in a westerly direction for 150 metres to a point on the foreshore being the prolongation of Barnett Street.

Diving flag

Any boat with divers (not snorkellers) operating from it must always display signals by day or night to inform other boat users. The daytime signal for divers is an International Code Flag "A". The flag must be at least 750mm long and 600mm wide. Divers operating without a vessel, for example from a jetty, must display the International Code Flag "A". The flag must be at least 750mm long and 600mm wide. The flag may be displayed from a buoy. If displayed from a buoy, the flag must not be less than 300 mm in length and 200 mm in width. The flag must be clearly visible to all vessels operating in the vicinity.



International Code Flag "A"

Prohibited practices freestyling, wave jumping & surfing

4 Personal water craft (PWC) - the practice of personal water craft freestyle driving, wave jumping and surfing is prohibited in all waters to the west of a line extending north and south from the eastern extremity of Emu Point, with the exception of a rectangular area of King George Sound measuring 300 metres by 400 metres and bounded by yellow buoys, located 100 metres north of Goode Beach on the Vancouver Peninsula and 400 metres south of Mistaken Island.

HMAS Perth

5 The former guided missile destroyer HMAS Perth was sunk as a dive wreck on 24 November 2001 in a position approximately 500 metres south south west of Seal Island. The wreck site marked by ten mooring buoys. There is a 250 metre radius fishing exclusion zone surrounding the dive site. Mooring reservations can be made through the City of Albany.

Open to personal water craft

All water ski areas and water ski take-off areas are closed to navigation of personal water craft (PWC) unless conducting water ski operations or transiting directly through the area, with the exception of the Oyster Harbour water ski area. PROVIDING THAT PWCs operating within it, when not conducting water ski operations or transiting directly through the area, must remain well clear at all times of all vessels engaged in water ski operations.

Age limits - To operate a PWC at a speed greater than 8 knots you must be at least 16 years of age and hold a Recreational Skipper's Ticket.

Navigation lights

All vessels under way during the hours of sunset to sunrise must display navigation lights appropriate to the particular size and type of vessel. For further information please refer to the RST Workbook or contact the Department on (08) 9216 8999.

Age requirements and restrictions for skippers

To operate a vessel with a motor of 4.5 kwp or less

A person in charge of a recreational vessel with a motor of 4.5 kilowatts (6hp) or less is not required to hold an RST. However, the following age restriction applies:
Under 10 years may not drive a motor boat.

To operate a vessel with a motor greater than 4.5 kwp

A person in charge of a recreational vessel with a motor greater than 4.5 kilowatts (6hp) is required to hold an RST. However, the following age restrictions apply:

Persons over 14 and under 16 years of age are restricted to operating during daylight hours and at a speed less than 8 knots.

