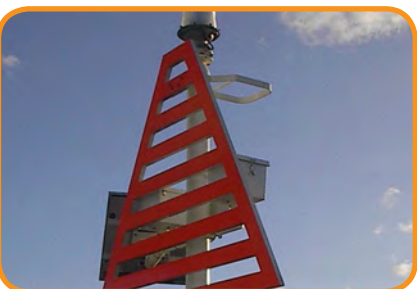
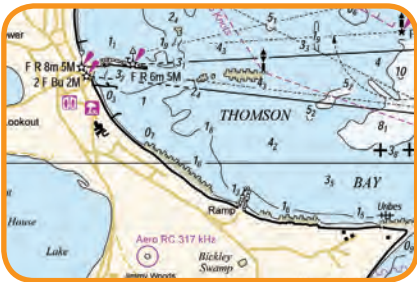




Coastal Infrastructure Business Unit → **Fact Sheet 2011**



Coastal Infrastructure Business Unit

→ Fact Sheet 2011

The **COASTAL INFRASTRUCTURE BUSINESS UNIT** (Coastal Infrastructure) enriches the quality of life for Western Australians as a centre of technical expertise that:

- Plans, creates, enhances and manages new and existing land and water based maritime facilities;
- Delivers coastal engineering solutions; and
- Collects, analyses, manages, disseminates and presents marine, land, infrastructure and transport related information.

Coastal Infrastructure comprises of three branches, being **Spatial Information**, **New Coastal Assets** and **Coastal Facilities**, each assuming a key function of the Business Unit's role.

→ Core Operational Business

Spatial Information is a centre of expertise for the collection, management and presentation of maritime-based information in support of DoT's strategic programs for marine safety, coastal protection, coastal management, facility management, coastal planning and new coastal development projects.

Spatial Information also provides expert hydrographic surveying, oceanographic, cartographic and data management services to DoT, the wider portfolio and when required, the private sector.

New Coastal Assets provides management and engineering services for the creation and enhancement of new and existing land and water-based maritime facilities and coastal engineering solutions in Western Australia (WA). New Coastal Assets has a particular focus on providing coastal engineering advice, planning, works programming, project management and contract management functions.

New Coastal Assets provides a coastal management function centred around coastal policy, coastal engineering advice, provision of coastal protection and data collection and analysis.

New Coastal Assets also reviews private maritime developments including marinas, jetties and canal estates throughout WA, often as part of its regulatory role for the Western Australian Planning Commission, local governments and for jetty licensing. Research performed by New Coastal Assets is responsible for identifying the growth in recreational boating activity and for progressing the planning required to establish new facilities.

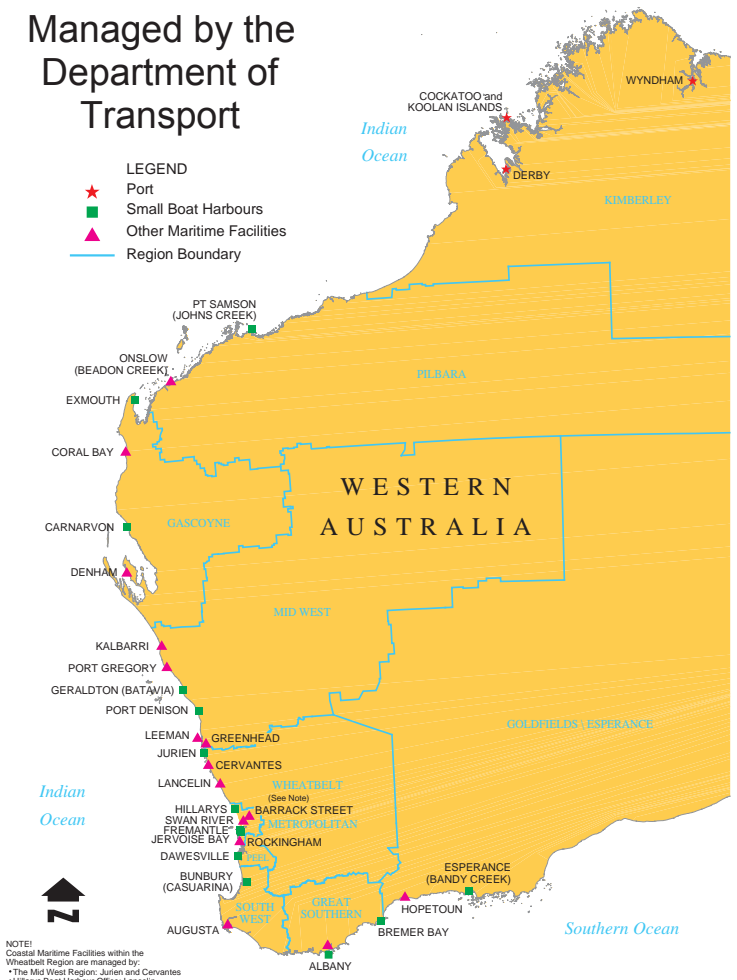
The Recreational Boating Facility Scheme successfully delivers grants each year to local governments and eligible agencies around WA to provide new and improved boating facilities.

All of these tasks are vital in ensuring that New Coastal Assets meets the coastal infrastructure needs of the WA community through the delivery of innovative, efficient and cost-effective maritime facilities and the provision of sound coastal engineering solutions.

Coastal Facilities provides safe, well organised and inviting maritime amenities that balance the needs of a diverse user group.

Coastal Facilities is responsible for management, operations and maintenance of maritime facilities and ports at approximately 50 coastal locations throughout WA. Coastal Facilities manages 250 lease properties and 1400 vessel moorings and pens for recreation and industry uses. Coastal Facilities also licenses jetties, moorings and ferries.

Maritime Facilities Managed by the Department of Transport



→ Industry and Operating Environment

Coastal Infrastructure services the marine and fishing industries, recreational boaters, tourism and the general public.

- Fishing, both commercial and recreational, generates over \$1.3 billion each year into the State's economy;
- recreational fishing is a popular activity that involves around 34 per cent of the State's population;
- over 200,000 tourists engage in activities in WA involving charter boats each year;
- tourists to WA contributed \$7.3 billion to the Gross State Product in 2007-08; and
- the use of real-time oceanographic recording systems increases the value of WA exports by over \$2 billion per annum.

Coastal Infrastructure operates in an ever-changing and demanding environment. The majority of the State's population is located close to the coastline and the services that Coastal Infrastructure provides impact on the majority of Western Australians, whether through their work or recreational pursuits.

The recent economic growth has brought many capacity challenges for Government. Not only has WA's population increased through people being attracted to the State for work, but also the ownership of boats per capita increased. This has led to unprecedented demand for boating facilities – pens, moorings and launching ramps for trailer-able craft.

→ Facts & Statistics

- Coastal Infrastructure maintains assets to the value of approximately \$455 million;
- the licensing of private jetties has increased by nearly 60% in the last 10 years. A total of 1,659 private jetties were licensed in 1997-98, with that number increasing to 4,130;
- leases managed by Coastal Facilities in 2010-11 provided annual rental of \$9.1 million;
- mooring facilities for approximately 1500 vessels are provided State-wide and generated \$5.9 million in 2010-11;
- over 1170 navigation aids along the State's coastline are serviced and maintained;
- oceanographic data is collected from a network of approximately 29 tide gauges, 7 wave buoys and up to 8 mobile submersible measuring devices;
- historical tide and wave data is available for over 80 locations from Wyndham to Esperance; and
- since its inception in 1998-99 the Recreational Boating Facilities Scheme has enabled significant improvements in safety and convenience for the recreational boating community with a total of over \$20 million granted to 189 projects to improve the facilities throughout WA, from Wyndham in the north to Esperance in the south.

→ Key Sources of Revenue

- Recreational Boating Fund;
- mooring, pen and other fees for boat harbours;
- jetty, mooring and ferry licence fees;
- rent and lease fees for maritime properties;
- hydrographic survey fees;
- provision of maritime and transport related cartographic products;
- provision of oceanographic information;
- the Port of Wyndham; and
- cash appropriations from Government.



→ Key Stakeholders

- Peak industry bodies representing stakeholders, for example the Western Australian Fishing Industry Council, the Boating Industry Association of WA, Boating WA and Superyacht Base WA;
- federal government agencies including the Bureau of Meteorology, the National Tidal Facility and the Royal Australian Navy;
- local government authorities;
- statutory management authorities such as the Swan River Trust;
- regional development commissions;
- port authorities;
- educational institutions;
- commercial shipping (Wyndham & Derby);
- commercial fishing industry;
- ferry and charter boat operators;
- harbour tenants;
- recreational boat owners and fishers;
- grant recipients under Recreational Boating Facilities Scheme;
- owners of private marinas and/or other maritime facilities;
- developers of, and consultants for, marine-oriented land;
- developers of canal estates (including LandCorp);
- coastal engineering and environmental consulting businesses;
- tourists;
- the public;
- internal branches and divisions of DoT including Marine Safety and TravelSmart; and
- state government departments including Public Transport Authority, Department of Planning, Environment and Conservation, Western Australian Planning Commission, Fisheries, Department of Industry and Resources, Department of Water and LandCorp.



→ Principal Legislation Relevant to Coastal Infrastructure

- *Marine and Harbours Act 1981*
- *Jetties Act 1926*
- *Western Australian Marine Act 1982*
- *Mooring Regulations 1998*

→ Staff and Financial Information

Coastal Infrastructure employs 80 staff, based in three metropolitan locations, being Marine House and the Marine Operations Centre in Fremantle and Hillarys Boat Harbour.

In 2008-09 Coastal Infrastructure contributed over \$22 million in revenue to Government, managed a capital budget of \$20 million and managed and maintained assets to the value of approximately \$455 million.

Contact: Steve Jenkins
Acting General Manager,
Coastal Infrastructure
(08) 9216 8911

