



Government of **Western Australia**  
Department of **Transport**

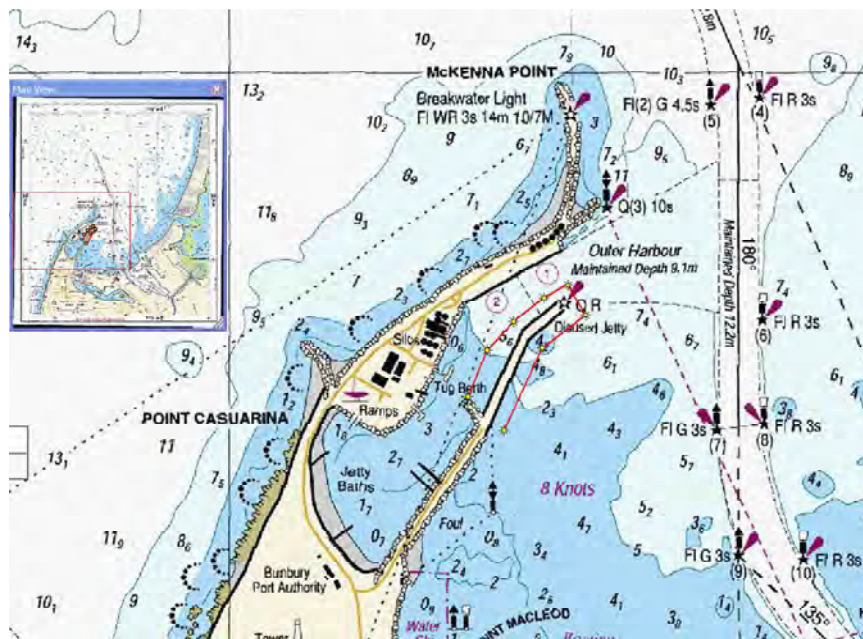
**Temporary Notice to Mariners**  
**Closure of Waters to Navigation**  
**Old Bunbury Timber Jetty**  
**Outer Harbour, Port of Bunbury**

Acting pursuant to Section 66 of the Western Australian Marine Act 1982, a closure to navigation of waters surrounding the Old Bunbury Timber Jetty is declared and will remain in force until further notice.

Mariners are advised that a jetty boom has been deployed around the jetty structure.

The closure area is delineated by 8 (eight) yellow buoys with flashing yellow light as per following chart-let. Only vessels authorised by the Department of Transport may access the closure area.

**Chart WA859 (Datum GDA 94), August 2005, Edition 2:**



A minimum navigable channel of 130 metres will be maintained at all times on the North West side of the outer harbour channel entrance adjacent to the closure area.

**Mariners are advised that all vessels other than those authorised are excluded from access to the above closure area, and of the reduced channel width at the Outer Harbour entrance. Vessels are to navigate with caution and to remain well clear of the closure area.**

**David Harrod FNI**  
**General Manager, Marine Safety**  
**Department of Transport**