

Government of Western Australia Department of Transport		Protected Waters lakes, rivers, inlets and estuaries except Lake Argyle	0-2 Nautical Miles from the mainland shore	2-5 Nautical Miles from the mainland shore	Over 5 Nautical Miles from the mainland shore
Required Safety Equipment					
	Recreational Skipper's Ticket The skipper of a recreational vessel, powered by a motor greater than 4.5kw (6 hp) must hold an RST.	✓	✓	✓	✓
	Bilge Pump/Bailer All vessels must carry a bilge pump. Vessels under 7 metres may carry a bailer in lieu of a bilge pump.	✓	✓	✓	✓
	Fire Extinguisher Vessels with an inboard engine or carrying hydrocarbon consuming appliances must carry an approved fire extinguisher.	✓	✓	✓	✓
	Anchor and line An efficient anchor and line must be carried.	—	✓	✓	✓
	Lifejacket A lifejacket bearing the label PFD Type 1 or the Australian standard AS 1512 or AS 4758 - Level 100 (or higher) must be carried for every person onboard.	—	✓	✓	✓
	Red and Orange Flares At least two hand held red flares and two hand held orange flares must be carried. Two parachute flares may be carried in lieu of the two hand held red flares and a smoke canister may be carried in lieu of the smoke flares.	—	✓	✓	✓
	EPIRB A 406 MHz EPIRB registered with AMSA bearing the standard AS/NZS 4280.1 must be carried if proceeding more than 2 miles from the mainland shore or more than 400 metres from an island located more than 2 miles from the mainland shore.	—	—	✓	✓
	Parachute Flares A minimum of two parachute flares must be carried if operating more than 5 miles from the mainland shore or more than 1 mile from an island located more than 5 miles from the mainland shore.	—	—	—	✓
	Marine Radio A marine radio must be carried if operating more than 5 miles from the mainland shore or more than 1 mile from an island located more than 5 miles from the mainland shore. The radio can be 27 MHz, VHF or HF.	—	—	—	✓

RSE-0810

Contact Details

Department of Transport

Marine Safety Hotline.....1300 863 308
Fremantle Office.....9216 8999
Marine Operations Centre.....9431 1000
Website.....www.transport.wa.gov.au/imarine

Police

Rockingham.....9528 8000
Water Police.....9442 8600

Department of Fisheries

Rockingham.....9527 3699
Fishwatch.....1800 815 507

Marine Sea Search and Rescue

VN6KC Rockingham9528 2222

Hospital

Rockingham.....9527 2777
Ambulance.....9334 1234
000 (or mobile 012)

Yacht Clubs

Safety Bay Yacht Club.....9527 1946
The Cruising Yacht Club9527 5468

City of Rockingham Council

.....9528 0333

Rangers

.....9528 0333

Department of Environment and Conservation

.....9432 5111
A/H 9483 6462

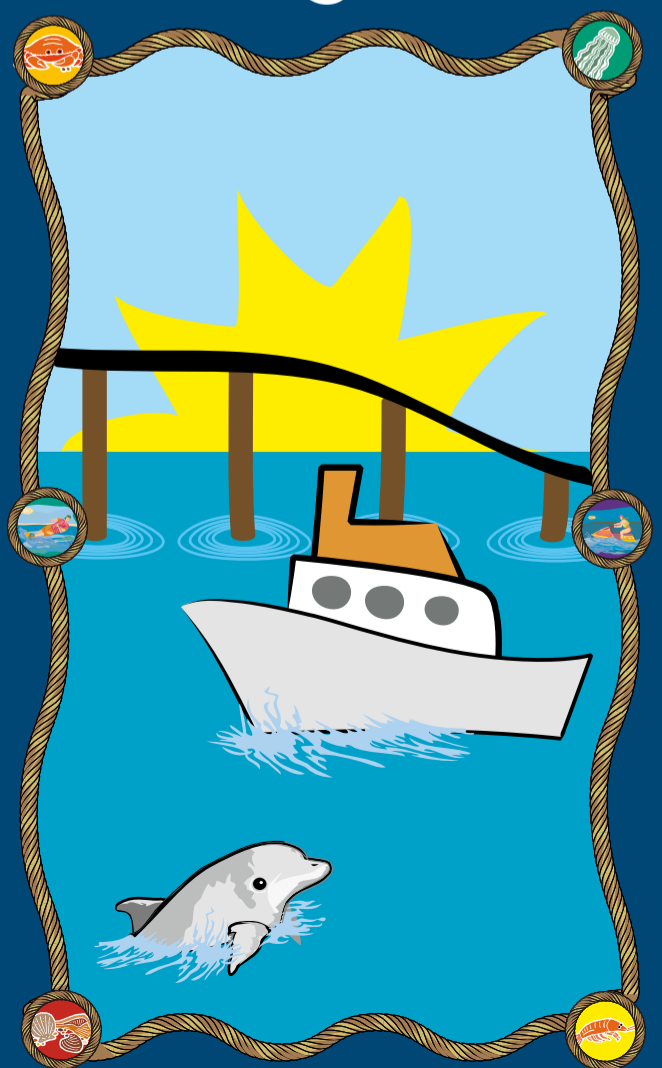
Boating Weather Forecast

Boating Weather.....1900 955 350
Website.....www.bom.gov.au



Government of Western Australia
Department of Transport

Rockingham Boating Guide



February 2011

MARINE Safety
supporting WA's Boating Community

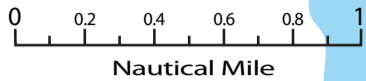


Government of Western Australia
Department of Transport

ROCKINGHAM WATERS

NOT TO BE USED FOR NAVIGATION

For more detailed information, refer to
Department of Transport Nautical Charts
Cape Peron to Dawesville WA 913
Wambro DMH 227
Ocean Reef to Cape Peron WA 001



LEGEND

- 5 Knot Speed Restricted Area
- 8 Knot Speed Restricted Area
- 12 Knot Speed Restricted Area
- Mooring Area (8 Knots)
- PWC Freestyle Area
- Water Ski Area
- Boating Prohibited Area
- Swimming Prohibited area

Recreational Skipper's Ticket

To operate a vessel with
a motor of 4.5 kw or less

A person in charge of a recreational vessel with a motor of 4.5 kilowatts (6hp) or less is not required to hold an RST. However, the following age restriction applies:

Under 10 years may not drive a motor boat.

To operate a vessel with
a motor greater than 4.5 kw

A person in charge of a recreational vessel with a motor greater than 4.5 kilowatts (6hp) is required to hold an RST. However, the following age restrictions apply:

Persons over 14 and under 16 years of age are restricted to operating during daylight hours and at a speed less than 8 knots.

Personal water craft (PWC)

Age limits - To operate a PWC at a speed greater than 8 knots you must be at least 16 years of age and hold a Recreational Skipper's Ticket.

Safety equipment

A personal flotation device (PFD) for each person on board must be worn at all times:

- within 400 metres of the shore – either a PFD Type 1, 2, or 3;
- between 400 metres and 2 nm from shore – a PFD (Type 1 only) and inshore distress flare kit, in serviceable condition;
- between 2 and 5 nm – a PFD (Type 1 only), inshore distress flare kit and an EPIRB;
- vessels of less than 3.75 metres in length are not permitted to operate more than 5 nm from the shore.

Freestyling and wake jumping is prohibited:

- within any speed restricted area;
- within 30 metres of another PWC;
- within 50 metres of another vessel or person in the water.

Water ski areas - PWC may operate when towing a water skier. When towing a water skier all vessels are required to carry an observer of at least 14 years of age. Observers must also wear a PFD.

PWC not engaged in water skiing must at all times remain well clear of the take-off and landing area and any vessels engaged in water skiing.

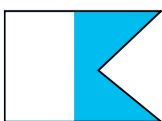
Diving flag

Any boat with divers (not snorkellers) operating from it must always display signals by day or night to inform other boat users. The daytime signal for divers is an International Code Flag "A". The flag must be at least 750mm long and 600mm wide.

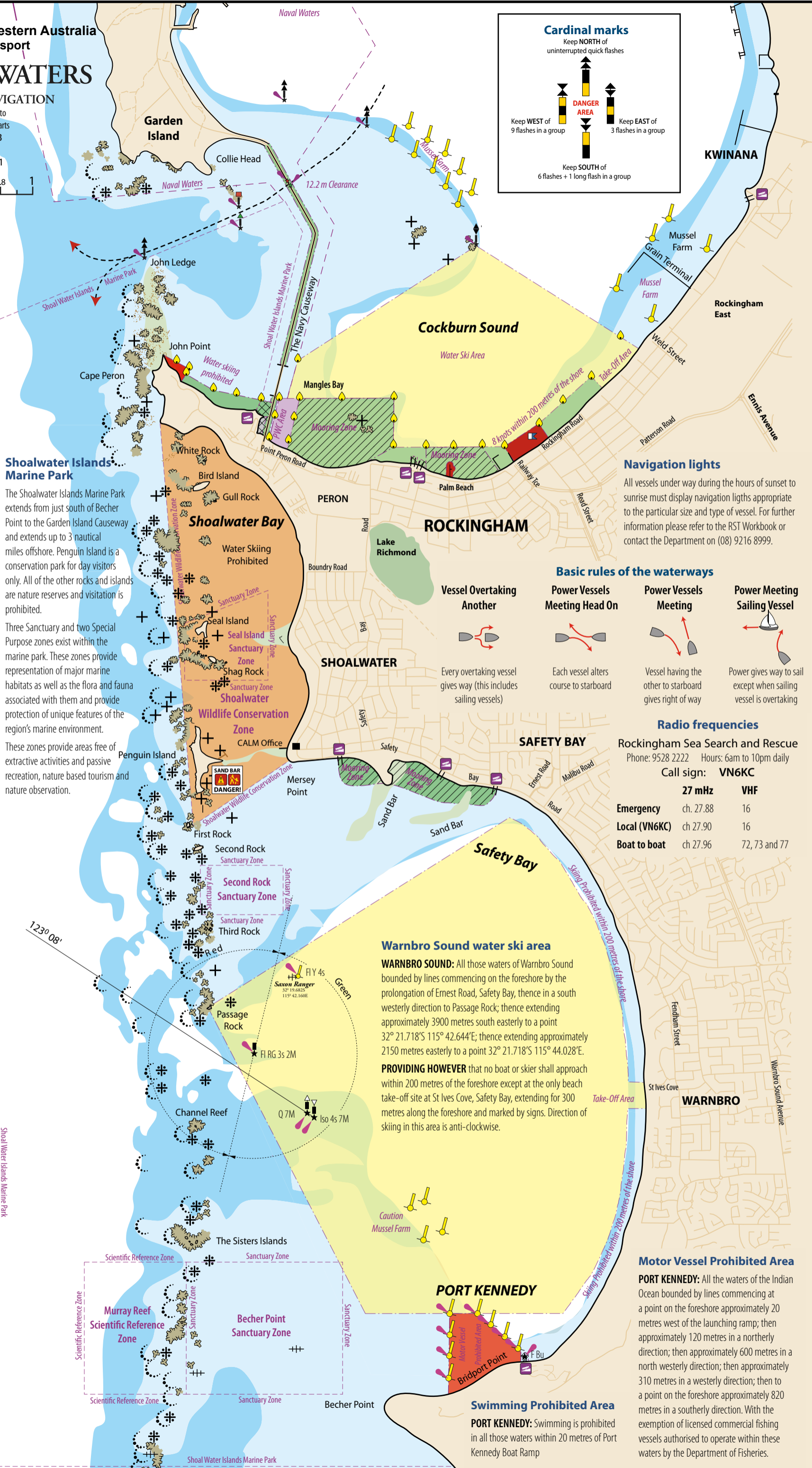
Divers operating without a vessel, for example from a jetty, must display the International Code Flag "A". The flag must be at least 750mm long and 600mm wide.

The flag may be displayed from a buoy. If displayed from a buoy, the flag must not be less than 300 mm in length and 200 mm in width.

The flag must be clearly visible to all vessels operating in the vicinity.



International Code Flag "A"



Cardinal marks

Keep NORTH of uninterrupted quick flashes

Keep WEST of 9 flashes in a group

Keep EAST of 3 flashes in a group

Keep SOUTH of 6 flashes + 1 long flash in a group

DANGER AREA

Navigation lights

All vessels under way during the hours of sunset to sunrise must display navigation lights appropriate to the particular size and type of vessel. For further information please refer to the RST Workbook or contact the Department on (08) 9216 8999.

Basic rules of the waterways

<h3>Vessel Overtaking Another</h3> <p>Every overtaking vessel gives way (this includes sailing vessels)</p>	<h3>Power Vessels Meeting Head On</h3> <p>Each vessel alters course to starboard</p>	<h3>Power Vessels Meeting</h3> <p>Vessel having the other to starboard gives right of way</p>	<h3>Power Meeting Sailing Vessel</h3> <p>Power gives way to sail except when sailing vessel is overtaking</p>
---	--	---	---

Radio frequencies

Rockingham Sea Search and Rescue
Phone: 9528 2222 Hours: 6am to 10pm daily

Call sign: **VN6KC**

	27 MHz	VHF
Emergency	ch. 27.88	16
Local (VN6KC)	ch 27.90	16
Boat to boat	ch 27.96	72, 73 and 77

Warnbro Sound water ski area

WARNBRO SOUND: All those waters of Warnbro Sound bounded by lines commencing on the foreshore by the prolongation of Ernest Road, Safety Bay, thence in a south westerly direction to Passage Rock; thence extending approximately 3900 metres south easterly to a point 32° 21.718'S 115° 42.644'E; thence extending approximately 2150 metres easterly to a point 32° 21.718'S 115° 44.028'E.

PROVIDING HOWEVER that no boat or skier shall approach within 200 metres of the foreshore except at the only beach take-off site at St Ives Cove, Safety Bay, extending for 300 metres along the foreshore and marked by signs. Direction of skiing in this area is anti-clockwise.

Motor Vessel Prohibited Area

PORT KENNEDY: All the waters of the Indian Ocean bounded by lines commencing at a point on the foreshore approximately 20 metres west of the launching ramp; then approximately 120 metres in a northerly direction; then approximately 600 metres in a north westerly direction; then approximately 310 metres in a westerly direction; then to a point on the foreshore approximately 820 metres in a southerly direction. With the exemption of licensed commercial fishing vessels authorised to operate within these waters by the Department of Fisheries.