

INDIAN OCEAN

PORT OF PORT HEDLAND - INNER HARBOUR

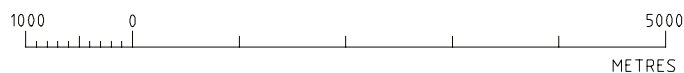
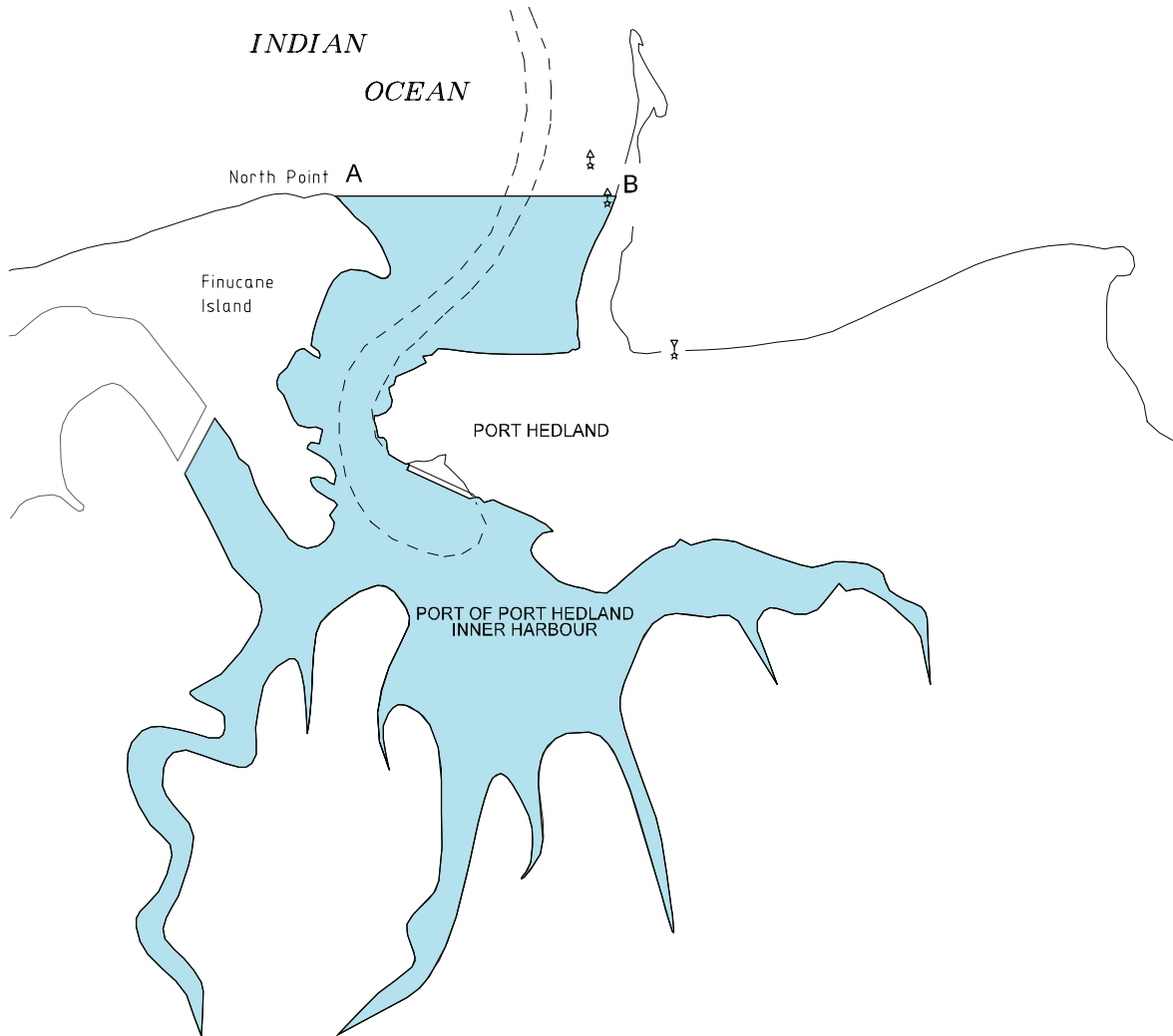
LIMIT OF SMOOTH WATERS

ALL THAT PORTION OF INDIAN OCEAN WATERS WITHIN THE PORT OF PORT HEDLAND - INNER HARBOUR ENCLOSED BY A CONTIGUOUS LINE FORMED BY,

THE SHORE LINE AND THE LINE AB.

POSITION OF POINTS USING A HORIZONTAL DATUM BASED ON WGS 84, ARE UPON THE SHORE LINE:
A, ON NORTH POINT -20° 17.748' S 118° 34.146' E
B, ON THE SPOIL BANK -20° 17.739' S 118° 35.665' E

THE WATERS ARE SHOWN COLOURED BLUE, ON THE WESTERN AUSTRALIAN DEPARTMENT OF TRANSPORT PLAN 846-21-01.



DATUM : WGS 84

EXAMINED

SECTION LEADER
MARINE GEOGRAPHIC INFORMATION SERVICES

PLAN 846-21-01



TRANSPORT
Department of Transport W.A.