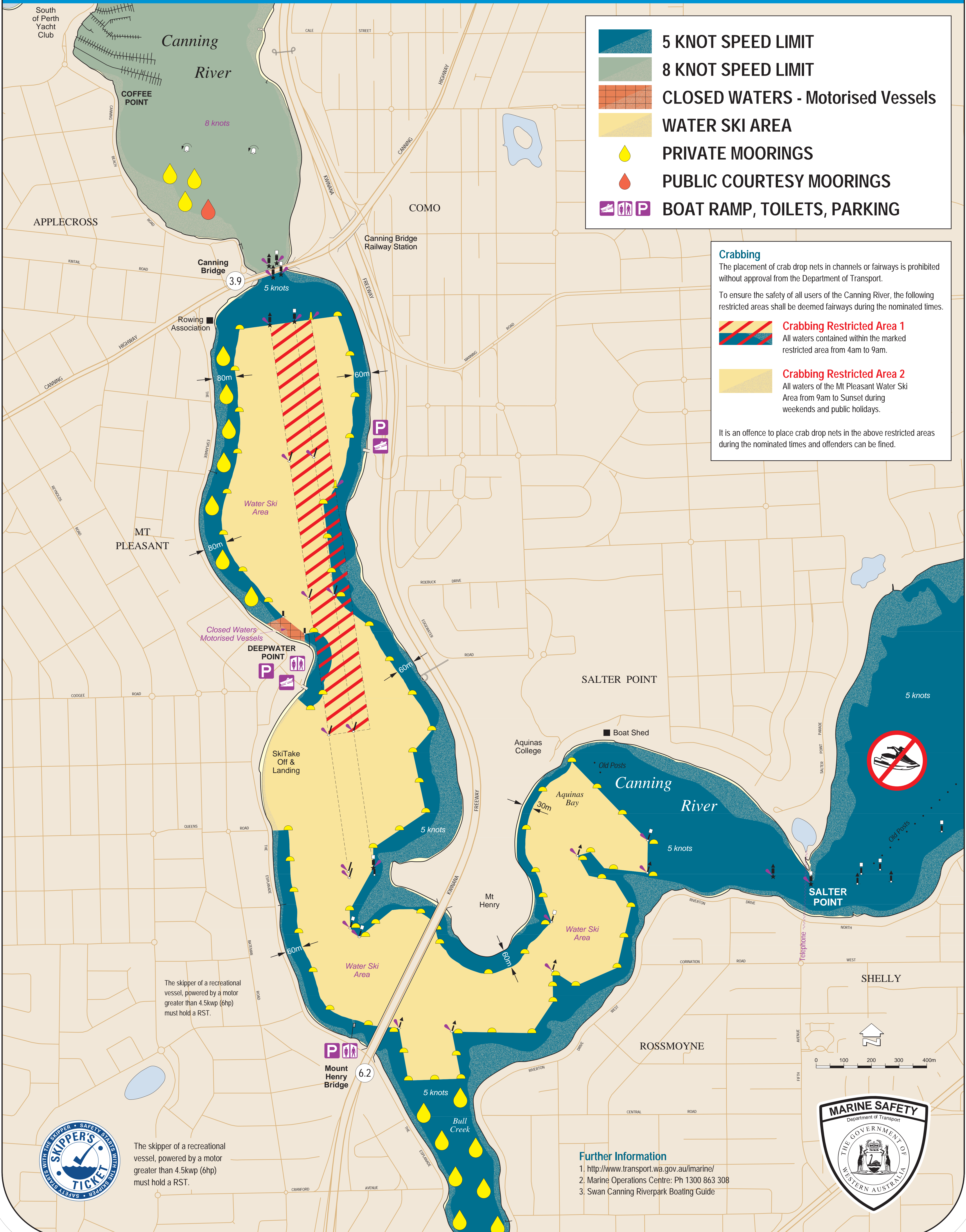


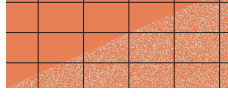








# Canning River Crabbing Restrictions



## Marine Safety Information



-  5 KNOT SPEED LIMIT
-  8 KNOT SPEED LIMIT
-  CLOSED WATERS - Motorised Vessels
-  WATER SKI AREA
-  PRIVATE MOORINGS
-  PUBLIC COURTESY MOORINGS
-  BOAT RAMP, TOILETS, PARKING

**Crabbing**  
The placement of crab drop nets in channels or fairways is prohibited without approval from the Department of Transport.

To ensure the safety of all users of the Canning River, the following restricted areas shall be deemed fairways during the nominated times.

-  **Crabbing Restricted Area 1**  
All waters contained within the marked restricted area from 4am to 9am.
-  **Crabbing Restricted Area 2**  
All waters of the Mt Pleasant Water Ski Area from 9am to Sunset during weekends and public holidays.

It is an offence to place crab drop nets in the above restricted areas during the nominated times and offenders can be fined.

The skipper of a recreational vessel, powered by a motor greater than 4.5kwp (6hp) must hold a RST.

The skipper of a recreational vessel, powered by a motor greater than 4.5kwp (6hp) must hold a RST.



- Further Information**
- <http://www.transport.wa.gov.au/imate/>
  - Marine Operations Centre: Ph 1300 863 308
  - Swan Canning Riverpark Boating Guide

