



# Coastal Infrastructure Port Geographe Reconfiguration Project 2013

## July 2013



Port Geographe just prior to commencement of construction work



Early stages of construction work



Excavator removing seagrass wrack from marina entrance channel



Dredge working in marina entrance channel



Groyne deconstruction



Revetment construction

## October 2013



# Coastal Infrastructure Port Geographe Reconfiguration Project 2013 - 2014

## December 2013

Marina entrance channel remained open during construction period



Excavation to form lagoon



Construction of breakwater in front of lagoon



Just prior to the opening of the new marina entrance channel



Old marina entrance channel closed with new marina entrance channel open



Deconstruction of old western breakwater



Deconstruction of old western breakwater



Completion of breakwater construction works



Completion of breakwater construction works



## June 2014



# Coastal Infrastructure Port Geographe Reconfiguration Project 2014 - 2015

## August 2014



Winter seagrass wrack with limited natural sand build up



Installation of buried permanent bypass pipeline



Pushing seagrass wrack back into the water



Sand delivery to Western Beach



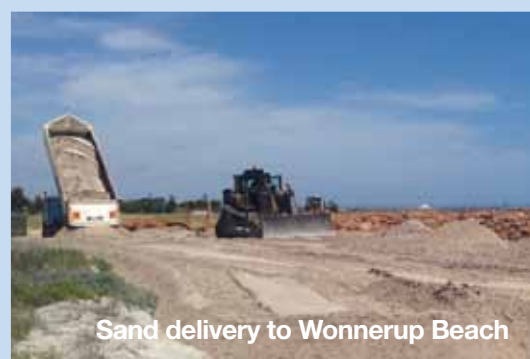
Removal and stockpiling of remnant seagrass wrack



Removing seagrass wrack on Western Beach



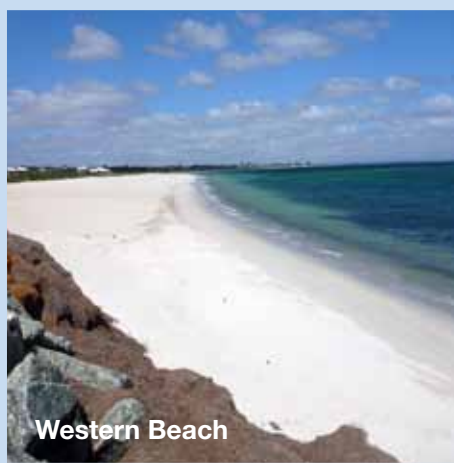
Saturating Western Beach with sand



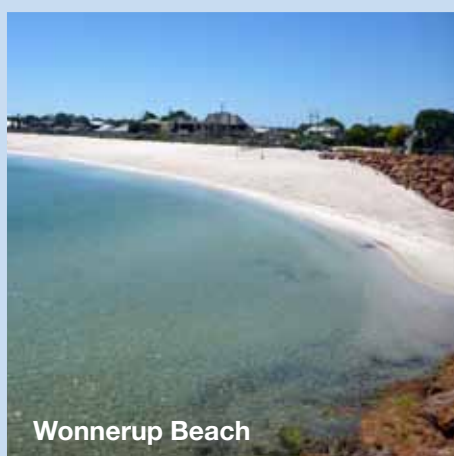
Sand delivery to Wonnerup Beach



Western Beach following placement of additional sand



Western Beach



Wonnerup Beach



Wonnerup Beach following placement of additional sand



# Coastal Infrastructure Port Geographe Reconfiguration Project 2015

## January 2015

Construction of naturescape play area



Installation of exposed aggregate paths



Planting of trees



Pumping of the mulch over the irrigation



Final stages of landscaping construction works



Naturescape play area



Overlooking the lagoon beach



Western side of marina being used by the public



## May 2015