

# Boating Guide Geraldton - Port Denison Marine Safety



July 2024

## SAFETY EQUIPMENT REQUIREMENTS

	REGISTRABLE VESSELS <small>Including sailing vessels that are or can be propelled by mechanical power.</small>	
	PROTECTED WATERS <small>Includes rivers, lakes, estuaries, harbours and waters within 400 metres from the shore in unprotected waters but excludes Cambridge Gulf and Lake Argyle.</small>	UNPROTECTED WATERS <small>Beyond 400 metres from the shore.</small>
<b>Recreational Skipper's Ticket</b> <small>The skipper of a recreational vessel, powered by a motor greater than 6 horsepower must hold an RST.</small>	✓	✓
<b>Lifejacket Carriage</b> <small>A lifejacket, as indicated in the table opposite, must be carried for every person on board.</small>	<small>Vessels smaller than 4.8m</small>	Minimum Level 100 <b>MUST BE CARRIED</b>
	<small>Vessels 4.8m and larger</small>	Minimum Level 100 <b>MUST BE CARRIED</b>
<b>Lifejacket Wearing</b> <small>As indicated in the table opposite.</small>	<small>Children older than one and younger than 12</small>	Minimum Level 100 <b>MUST BE CARRIED</b>
	<small>Personal Water Craft</small>	Minimum Level 50S <b>MUST BE WORN</b>
<b>Distress Beacon (in-date)</b> <small>A GPS enabled 406 MHz EPIRB OR If worn by at least one person, a GPS enabled PLB. Distress beacons must be in-date and registered with AMSA.</small>		RECOMMENDED
		✓
<b>Red and Orange Flares (in-date)</b> <small>At least two hand held red flares and two hand held orange flares must be carried. OR Electronic Visual Distress Signal (EVDs)</small>		RECOMMENDED
		✓
<b>Marine Radio</b> <small>A VHF or HF marine radio on any Registrable Vessel when operating more than 4 nautical miles from shore in unprotected waters.</small>		RECOMMENDED
		REQUIRED beyond 4 nautical miles RECOMMENDED within 4 nautical miles
<b>Recommended Additional Safety Equipment</b> <small>It is recommended an anchor and line, a fire extinguisher and a means of removing water be carried.</small>		RECOMMENDED
		RECOMMENDED

**Contact details**  
**Department of Transport**  
 Email: Ed.Boat@transport.wa.gov.au  
 Website: www.transport.wa.gov.au/marine  
 Marine Safety Hotline: 13 11 56

**Police**  
 Emergency: 000  
 Water Police: 9442 8600  
 Geraldton Police: 131 444

**Department of Fire and Emergency Services**  
**Marine Rescue Western Australia**  
 Emergency contact: VHF 16  
 Marine Rescue Geraldton  
 Marine Rescue Port Denison

**Boating Weather Forecasts**  
 Boating weather: 1300 815 916  
 Website: www.bom.gov.au

**Department of Primary Industry and Regional Development**  
 Fishwatch: 1800 815 507  
 Website: www.dpird.wa.gov.au

**Department of Biodiversity, Conservation and Attractions**  
 Website: www.dbca.wa.gov.au

**DECKEE** Boating in WA just got smarter. Download the free Deckee app.

**DoT Direct** anywhere, anytime! Save time and go online today

Join us at facebook.com/MarineSafetyWA

For further information go to www.transport.wa.gov.au/boatingguides or scan the QR Code

The information contained in this publication is provided in good faith and believed to be accurate at time of publication. The State shall in no way be liable for any loss sustained or incurred by anyone relying on the information. 16-11-02-SER-0724-WEB-S1

## PORT DENISON

Not to be used for navigation

**LEGEND**

- 5 Knot Area
- Closed Waters - ALL Vessels
- Swimming Prohibited area
- Boat Ramp
- Public toilet
- Parking
- GPS Validation Marker

**NAVIGATION MARKS**

- Lighthouse, major, minor light
- Beacon, port, starboard
- Safe water, isolated danger
- Spar buoy, port, starboard
- Pillar buoy, port, starboard
- Mooring buoy, yachting buoy
- Lead, front, rear

**CARDINAL MARKS**

- Indicates safe water to the North
- Indicates safe water to the South
- Indicates safe water to the East
- Indicates safe water to the West

Arurine Bay  
 Fishing Boat Harbour  
 LEANDER POINT

Port Denison Volunteer Sea Rescue VMR 667

Scale: 0 40 80 120 160 200m

### Batavia Coast Marina

The Department of Transport (DoT) manages the Batavia Coast Marina and users should abide by the following:

- 5 knot speed limit including a 45 metre buffer zone outside the marina;
- swimming or diving within the marina and marina entrance is prohibited;
- windsurfers, kiteboarders, stand up paddle boards, personal water craft freestyling, towing skiers or other buoyant equipment are prohibited to operate within the marina;
- cleaning fish and dumping offal or rubbish into the marina is prohibited;
- do not place fishing nets, lobster pots, lines or floats within the marina or entrance channel;
- anchoring a vessel anywhere within the marina or entrance channel is prohibited; and
- people departing on charters are not to park vehicles in the penholder section of the car park.

Note: Due to high demand on limited space, club or group activities must be booked through the DoT's Geraldton office. Conditions of operation will apply.

### Reduce wash

Vessel wash can cause damage to other vessels, retaining walls and floating pen jetties. Look behind you occasionally to make sure that your boat is not creating too much wash. If your wash is affecting other boats or property, slow down.

### Moorings and pens

Private boat pen hire is available for stopovers of one night or more.

Bookings can be made through the DoT's office in Geraldton, which is open on weekdays only. Please ensure you book in advance to avoid disappointment. Phone 9956 0113.

### Boat ramp courtesy

A good skipper plans for a day on the water and organises equipment, motors and mooring lines before leaving the boat ramp. Remember to:

- use designated rigging and de-rigging areas to avoid impeding other people launching and retrieving vessels;
- follow the directions on signage and or painted on the roadway;
- use the correct lanes for launch and retrieval;
- move quickly to the end of the jetty allowing other people to launch and recover;
- have patience with other less experienced boaters; and
- read all information signs at boat ramps to familiarise yourself with the local area.



### Local knowledge

The Geraldton region is known for the strong southerly winds that prevail during the summer months. Skippers are advised to check the weather reports before heading out on the water. Winds can blow up quite suddenly and reach speeds of 30 knots, making the return journey hazardous to small vessels.

If unsure of weather conditions, please contact the Bureau of Meteorology for the latest weather reports and updates.

### Marine rescue groups

Marine Rescue operate at Port Denison and Geraldton.

Please remember to log on before heading out to sea and supply them with:

- the vessel's name, registration number or call sign;
- the departure point and time;
- the destination;
- the trip intentions;
- the number of people on board;
- the amount of fuel carried; and
- the estimated time of return.

This basic information can make a big difference in a response to an emergency situation.

It is also important to remember to log off to avoid a search being initiated.

**Remember to LOG ON LOG OFF! every trip**  
 with the local Marine Rescue group

### Recreational Skipper's Ticket (RST)

The person in charge of a recreational vessel with a motor of **6 horsepower or less** is not required to hold a Recreational Skipper's Ticket (RST).

A skipper in charge of a recreational vessel with a motor **greater than 6 horsepower** is required to hold an RST and carry it when boating.

**Age restrictions**  
 A person under 10 years may not drive a motor boat. RST holders over 14 but under 16 years of age are restricted to operating during daylight hours at a speed less than 8 knots.

**Interstate skipper's tickets**  
 If you hold a valid/current interstate ticket, recognised by DoT and you enter, as a visitor or with the intention of permanently residing in Western Australia, you have three months to have the qualification recognised.

**General speed limit restrictions**  
 It is illegal, in any navigable waters to drive a motor boat at a speed exceeding eight knots, water ski or para-sail:

- through an arch of a bridge;
- in or through a mooring area;
- within 15 metres of a vessel underway;
- within 50 metres of -
  - (i) a moored vessel;
  - (ii) a person in the water;
  - (iii) a jetty or wharf;
  - (iv) a river bank or low water mark.

### GPS validation markers

Global Positioning System (GPS) validation markers are unique visible marks placed at a number of public boat ramps and jetties where skippers and owners of portable GPS units can validate their position and map datum settings. The markers are small, flat and yellow, similar to 'cats eye' road lane markers.

For further information visit our website or call 13 11 56.



### Personal water craft (PWC)

Every skipper of a PWC must hold an RST. A skipper who is older than 14 but under 16 years of age with an RST can only operate a PWC during daylight hours at a maximum speed of 8 knots.

- Every person on board a PWC must wear a lifejacket (minimum 50S) at all times.
- When travelling beyond 400 metres from shore in unprotected waters you need:
  - a GPS enabled EPIRB or PLB (must be worn); and
  - flares or electronic visual distress signal device.
- Beyond 4 nautical miles from shore in unprotected waters a marine radio must also be carried.

Freestyling and wake jumping is prohibited:

- within any speed restricted area;
- within 30 metres of another PWC;
- within 50 metres of another vessel or person in the water.

PWC may operate when towing a water skier. When towing a water skier all vessels are required to carry an observer of at least 14 years of age. Observers must also wear a lifejacket.

PWC not engaged in water skiing must at all times remain well clear of the take-off and landing area and any vessels engaged in water skiing.

For further information visit our website or call 13 11 56

### Paddle Craft

Recreational canoes, kayaks, surf skis, wave skis, inflatables or similar paddle craft must comply with WA marine laws including carriage of safety equipment.

When travelling beyond 400 metres from shore in unprotected waters you need:

- lifejackets (minimum 50S) (must be worn);
- a GPS enabled EPIRB or PLB (must be worn); and
- flares.

For further information visit our website or call 13 11 56.

### Kiteboards and windsurfing

With the onset of the sea breeze windsurfers and kiteboarders congregate at many popular locations. In certain conditions these small, fast moving sailing craft may be difficult to see and skippers need to maintain a proper lookout at all times and take appropriate action.

All windsurfers and kiteboarders have a duty of care to ensure their activities are conducted with regard to the prevailing conditions and circumstances and take appropriate action to avoid collisions.

When travelling beyond 400 metres from shore in unprotected waters you need:

- lifejackets (minimum 50S) (must be worn);
- a GPS enabled EPIRB or PLB (must be worn); and
- flares.

For further information visit our website or call 13 11 56

### Aids to navigation

It is illegal to interfere with, remove or damage any beacon, buoy or other artificial aid to navigation. Without permission in writing from the Department of Transport (DoT), it is illegal to secure any vessel to any beacon, buoy, seamark or other aid to navigation.

### Obstruction of navigation aids, channels and leads

Cray pots, lines and floats, drop nets, fishing nets, marker buoys or other buoyed objects can not be placed or allowed to remain in any channel or fairway in any port or harbour, or in any channel, fairway or passage in any navigable waters without the permission of DoT.

You also can't anchor or moor a vessel in any channel or fairway, unless the vessel is in distress.



# GERALDTON

Not to be used for navigation

## LEGEND

- 5 Knot Area
- 8 Knot Area
- Water Ski Area
- Closed Waters - ALL Vessels
- Closed Waters - Motorised Vessels
- Swimming Prohibited area
- Boat Ramp
- Unsealed Boat Ramp
- Public Toilet
- Parking
- GPS Validation Marker

## NAVIGATION MARKS

- Lighthouse, major, minor light
- Beacon, port, starboard
- Safe water, isolated danger
- Spar buoy, port, starboard
- Pillar buoy, port, starboard
- Mooring buoy, yachting buoy
- Lead, front, rear

## CARDINAL MARKS

- Indicates safe water to the North
- Indicates safe water to the South
- Indicates safe water to the East
- Indicates safe water to the West

## Dividing

Any boat with divers (not snorkellers) operating from it must always display signals by day or night to alert other boat users. The daytime signal for divers is an International Code Flag "A". The flag must be at least 750 millimetres long and 600 millimetres wide.

Divers operating without a vessel, for example from a jetty, must also display the International Code Flag "A".

The flag can be displayed from a buoy and must not be less than 300 millimetres in length and 200 millimetres in width.

The flag must be clearly visible to all vessels operating in the vicinity.

## Vessels to keep clear

When approaching a place or another vessel displaying the International Code Flag "A" or the appropriate signal during the hours of darkness, you must —

- (a) keep your vessel at least 50 metres clear of that place or vessel; or
- (b) where it is not possible to keep 50 metres clear of that place or vessel —
  - (i) proceed at the slowest speed at which the vessel can be safely navigated; and
  - (ii) maintain a proper lookout for people in the water.

For further information visit our website or call 13 11 56.



## Water skiing

Water skiing involves being towed over water at a speed of 8 knots or more by a motor boat.

## It takes at least three people to go water skiing:

1. A driver of at least 17 years of age with a Recreational Skipper's Ticket.
2. An observer of at least 14 years of age.
3. A person being towed.

Vessels taking off with skiers always give way to vessels landing a skier.

Beach take-off and landings are only permitted in the designated take-off and landing areas.

Skiing is only permitted between the hours of sunrise to sunset, unless otherwise indicated.

For further information visit our website or call 13 11 56.



## Maintain a good lookout and a safe speed

Please maintain a good lookout for swimmers, canoes, paddle craft and other vessels. Exercise caution and operate at a safe speed when navigating.

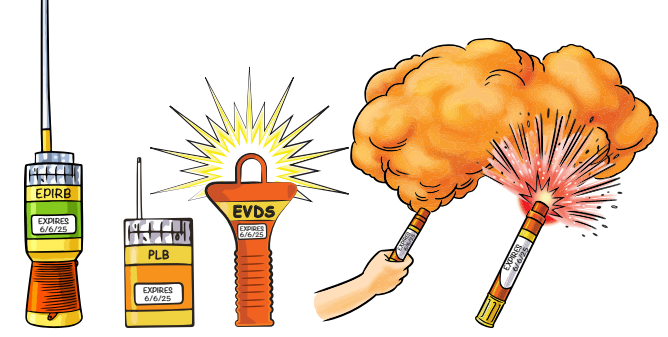


## Navigation lights

All vessels underway during the hours of sunset to sunrise must display appropriate navigation lights for the size and type of craft.

For further information visit our website or call 13 11 56.

## Distress beacons, EVDS and flares must be in-date



Remember to  
LOG ON!  
LOG OFF!  
every trip

with the local Marine Rescue group

### Basic rules of the waterways

**Vessel Overtaking Another**

Every overtaking vessel gives way (this includes sailing vessels)

**Power Vessels Meeting Head On**

Each vessel alters course to starboard (right)

**Power Vessels Meeting**

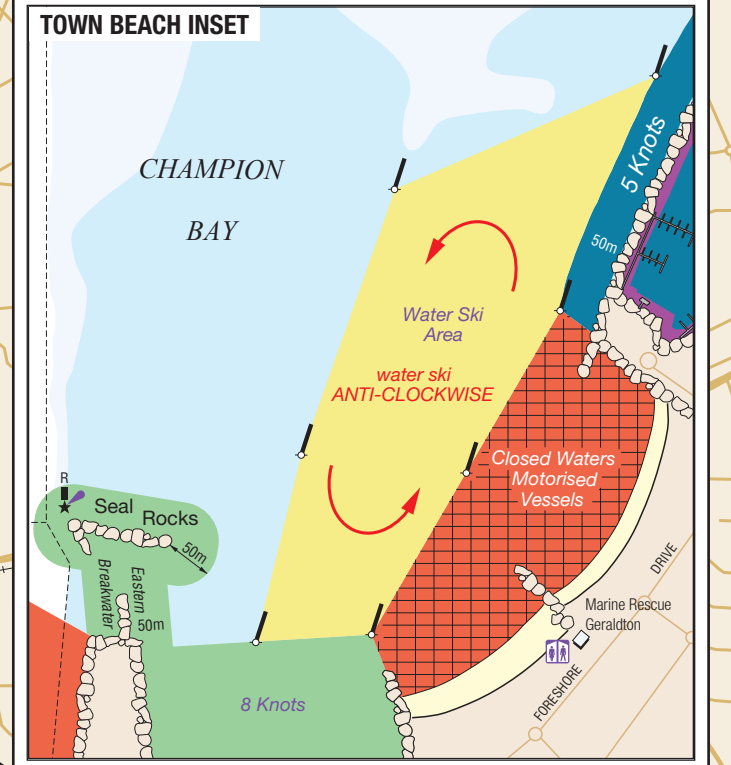
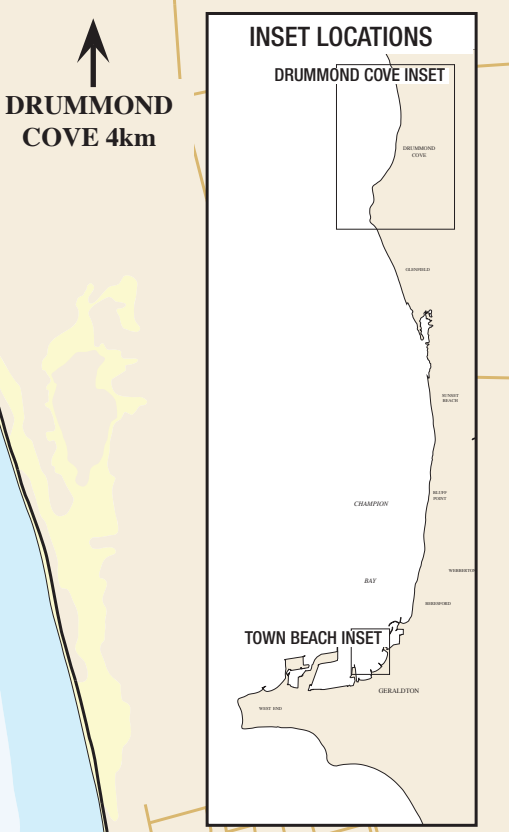
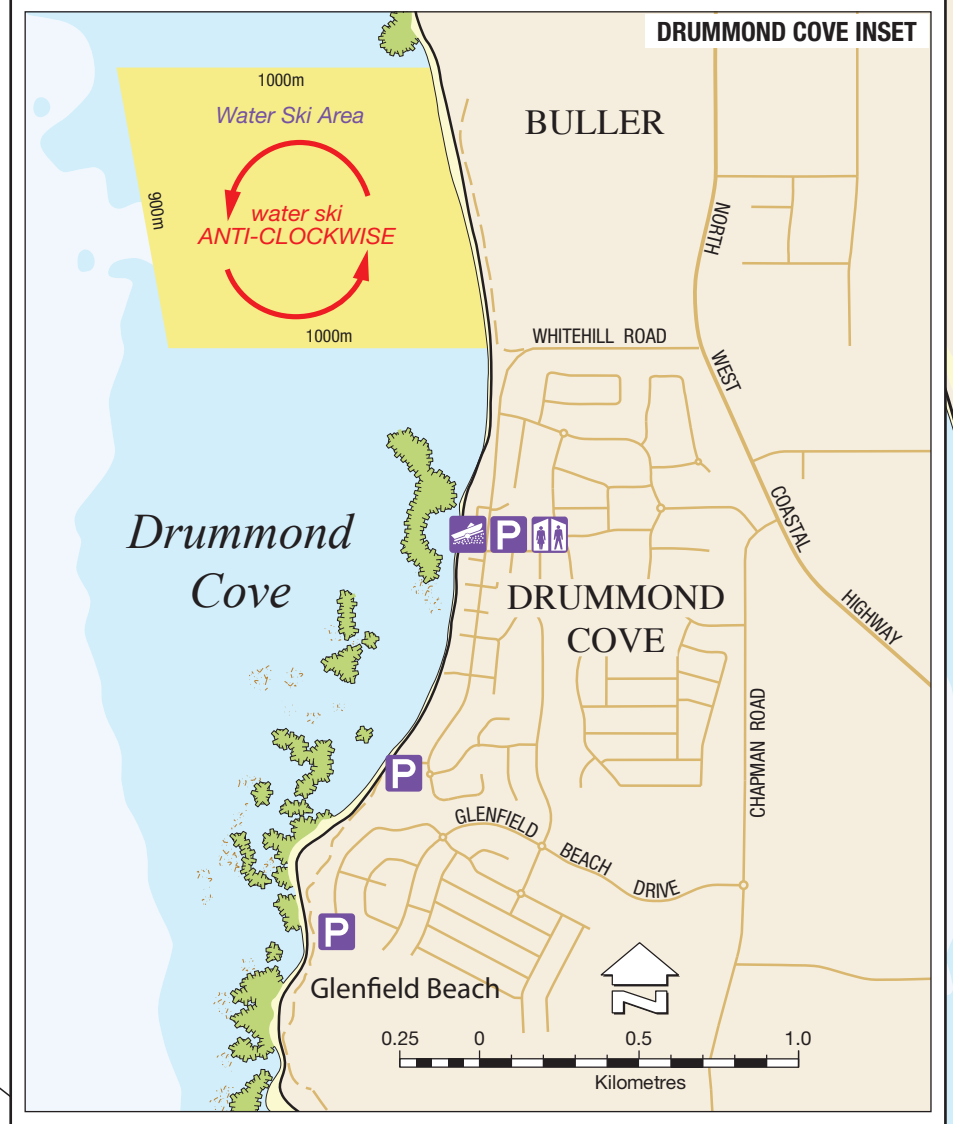
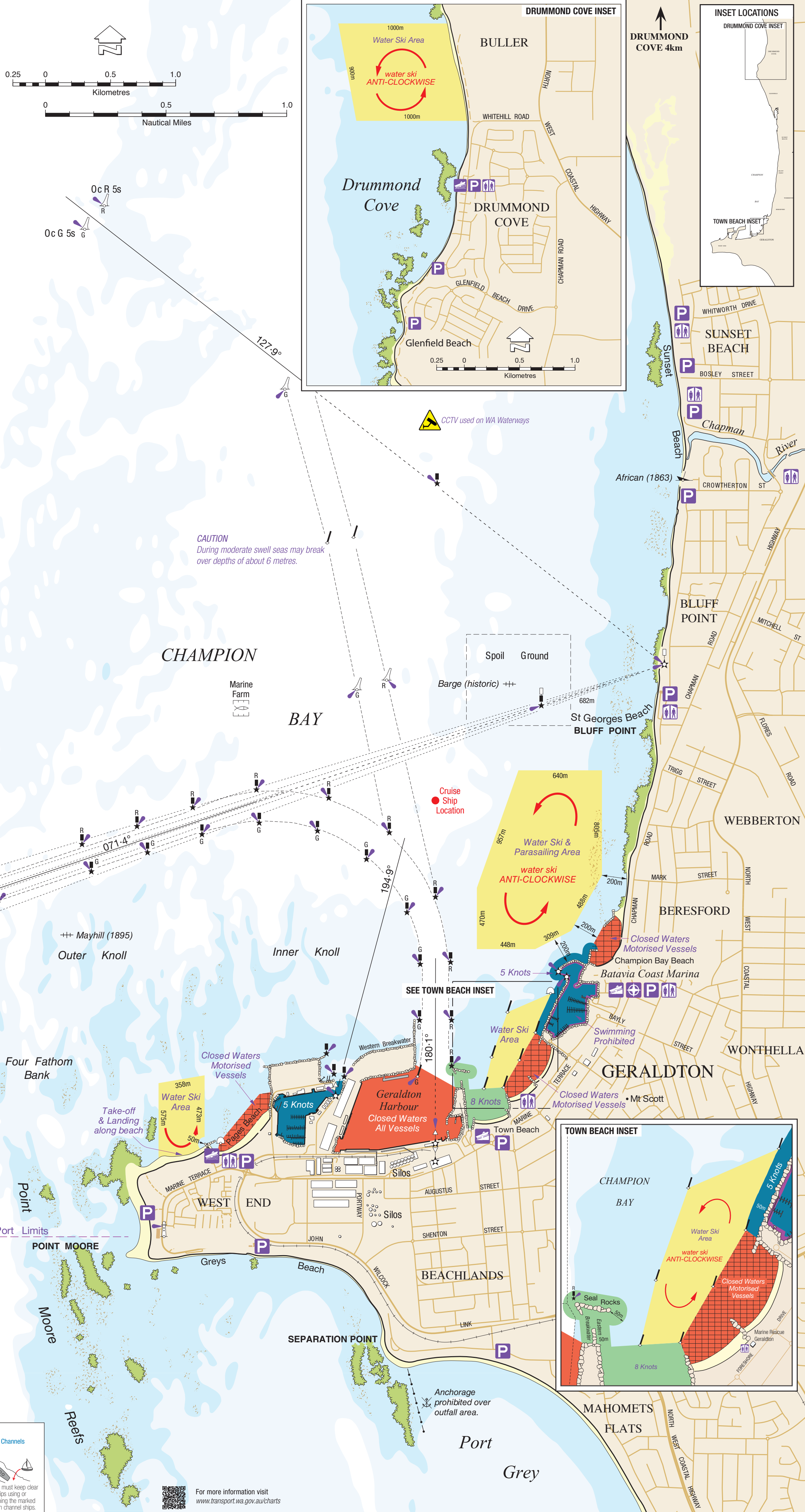
Give way to vessels on your starboard (right)

**Power Meeting Sailing Vessel**

Power gives way to sail except when sailing vessel is overtaking

**Ships in Channels**

All vessels must keep clear of ships using or approaching the marked navigation channel ships.



For more information visit [www.transport.wa.gov.au/charts](http://www.transport.wa.gov.au/charts)