

Boating Guide South Metropolitan Marine Safety



December 2025

SAFETY EQUIPMENT REQUIREMENTS



REGISTRABLE VESSELS Including sailing vessels that are or can be propelled by mechanical power.		
PROTECTED WATERS Includes rivers, lakes, estuaries, harbours and waters within 400 metres from the shore in unprotected waters but excludes Cambridge Gulf and Lake Argyle.	UNPROTECTED WATERS Beyond 400 metres from the shore.	
Recreational Skipper's Ticket The skipper of a recreational vessel, powered by a motor greater than 6 horsepower must hold an RST.	✓	✓
Lifejacket Carriage A lifejacket, as indicated in the table opposite, must be carried for every person on board.	Vessels smaller than 4.8m Minimum Level 100 MUST BE CARRIED	Vessels 4.8m and larger Minimum Level 100 MUST BE CARRIED
Lifejacket Wearing As indicated in the table opposite.	✓	✓
Distress Beacon (in-date) A GPS enabled 406 MHz EPIRB OR If worn by at least one person, a GPS enabled PLB. Distress beacons must be in-date and registered with AMSA.	Minimum Level 100 MUST BE CARRIED	Minimum Level 100 MUST BE CARRIED
Red and Orange Flares (in-date) At least two hand held red flares and two hand held orange flares must be carried. OR Electronic Visual Distress Signal (EVDs) An electronic signalling device may be carried in lieu of flares IF a GPS enabled EPIRB or PLB (must be worn) is also carried.	Minimum Level 100 MUST BE CARRIED	Minimum Level 100 MUST BE CARRIED
Marine Radio A VHF or HF marine radio on any Registrable Vessel when operating more than 4 nautical miles from shore in unprotected waters.	Minimum Level 50S MUST BE WORN	Minimum Level 50S MUST BE WORN
Recommended Additional Safety Equipment It is recommended an anchor and line, a fire extinguisher and a means of removing water be carried.	RECOMMENDED	RECOMMENDED

Contact details
Department of Transport and Major Infrastructure
Email: Ed.Boat@transport.wa.gov.au
Website: transport.wa.gov.au/marine
Marine Safety Hotline: 13 11 56

Police
Emergency: 000
Water Police: 9442 8600

Department of Fire and Emergency Services
Marine Rescue Western Australia
Emergency contact: VHF 16
Marine Rescue Rockingham
Marine Rescue Cockburn
Marine Rescue Fremantle

Boating Weather Forecasts
Boating weather: 1300 815 916
Website: bom.gov.au

Department of Primary Industries and Regional Development
Fishwatch: 1800 815 507
Website: dpird.wa.gov.au

Department of Biodiversity, Conservation and Attractions and Wildlife Helpline
Website: dbca.wa.gov.au



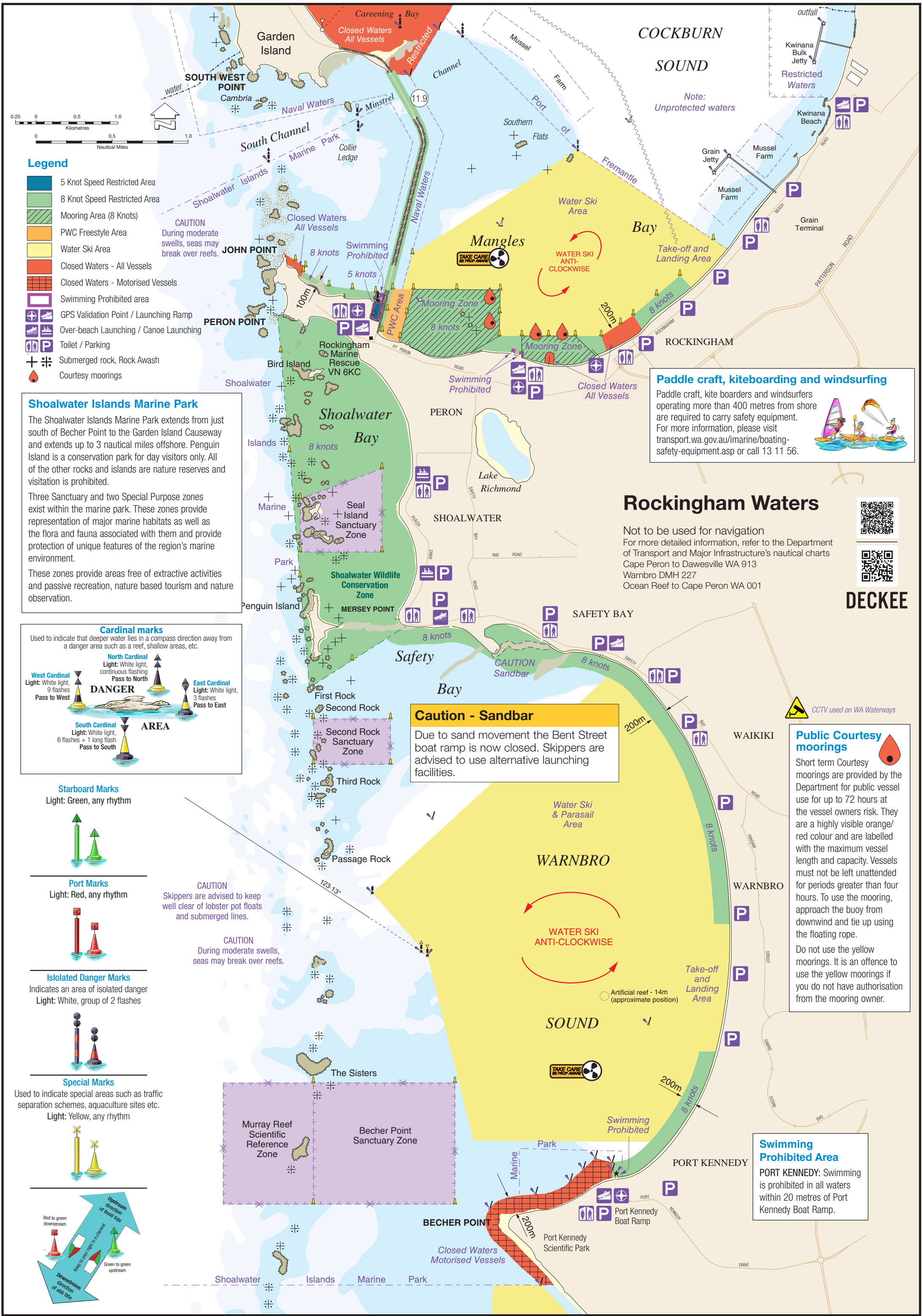
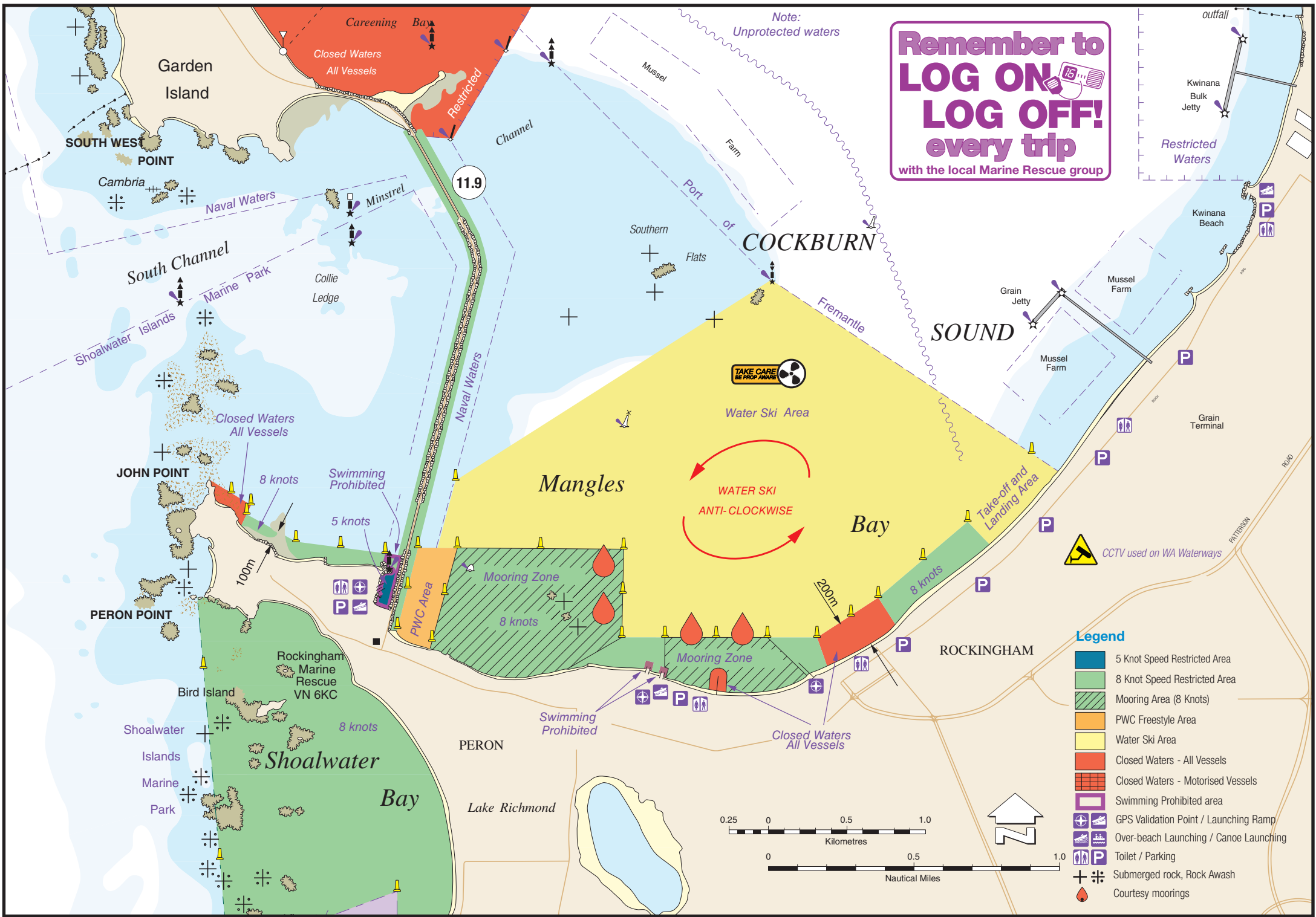
Boating in WA just got smarter.
Download the free Deckee app.

anywhere, anytime!
Save time and go online today

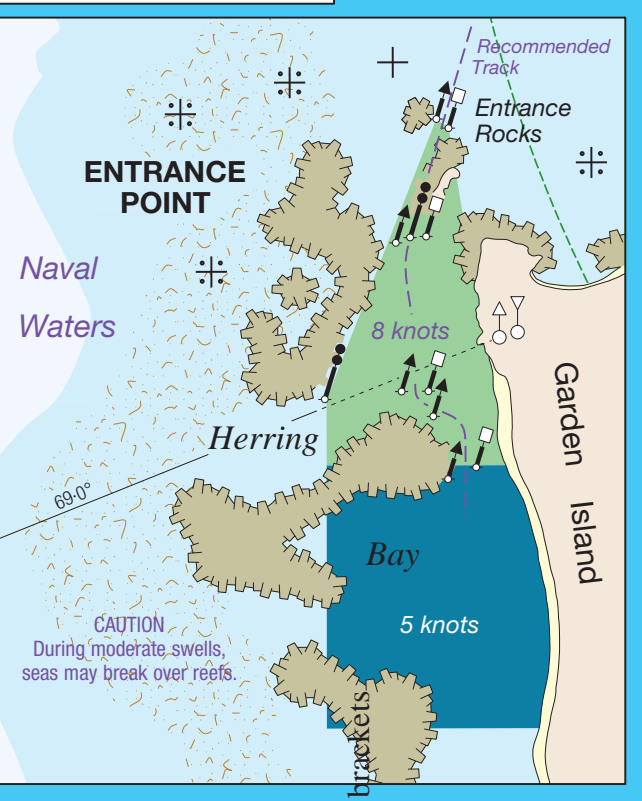
Join us at
facebook.com/MarineSafetyWA

For further information go to
www.transport.wa.gov.au/boatingguides
or scan the QR code

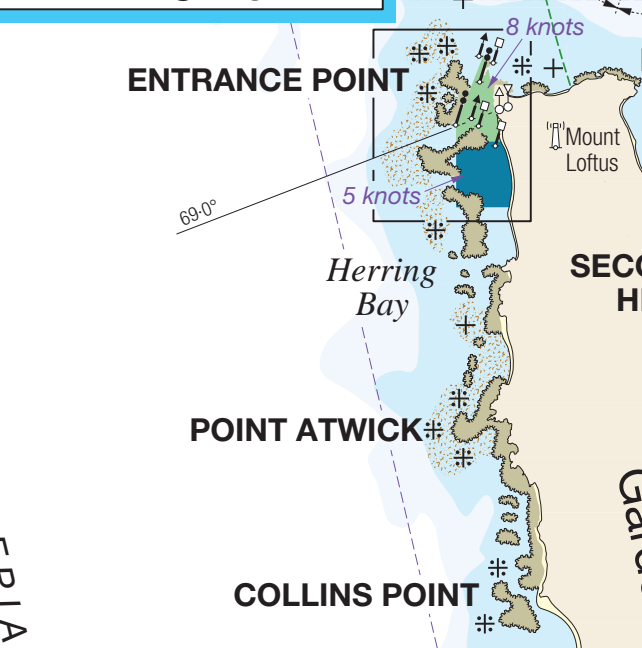
The information contained in this publication is provided in good faith and believed to be accurate at time of publication. The State shall in no way be liable for any loss sustained or incurred by anyone relying on the information. 16-24-02-SER-1225-WEB



Herring Bay Inset



See Herring Bay Inset

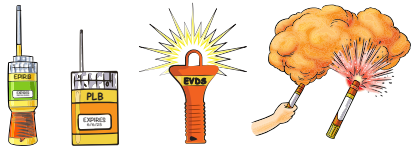


Distress beacons, EVDS and flares must be in-date

Emergency Position Indicating Radio Beacons (EPIRBs) and Personal Locator Beacons (PLBs). When operating more than 400 metres from shore in unprotected waters you must carry:

- a GPS enabled EPIRB or PLB worn by a person on board.
- flares or electronic visual distress signal device (EVDS).

Distress beacons must be in-date and registered with Australian Maritime Safety Authority (AMSA). For further information, please visit our website or call 13 11 56.



Garden Island HMAS Stirling

General rules and responsibilities for visitors

- Public access to Garden Island is via private boat only.
- Access is prohibited to Closed/Restricted, Naval Waters and Restricted areas on land.
- Access is from sunrise to sunset - camping overnight is not permitted.
- Spearfishing implements are prohibited in Naval Waters.

Garden Island Naval restricted areas

Under the Maritime and Offshore Facilities Security Act 2003 all waters contained within Careening Bay and Sulphur Bay have been designated Naval Restricted Areas. Vessel access within these zones is controlled and unauthorised vessel entry is prohibited.

Obstruction of channels and leading lines

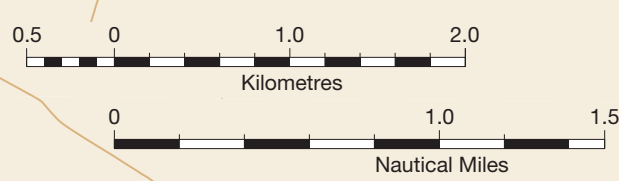
Cray pots, drop nets, fishing nets, marker buoys or other buoyed objects can not be placed or allowed to remain in any channel or fairway in any port or harbour, or in any channel, fairway or passage in any navigable waters except by permission of the Department. You also can't anchor or moor a vessel in any channel or fairway, unless the vessel is in distress.

Rockingham Waters

Not to be used for navigation. For more detailed information, refer to the Department of Transport and Major Infrastructure's nautical charts Cape Peron to Davesville WA 913 Warnbro DMH 227 Ocean Reef to Cape Peron WA 001



DECKEE



Legend

- 5 Knot Speed Restricted Area
- 8 Knot Speed Restricted Area
- Mooring Area (8 Knots)
- PWC Freestyle Area
- Water Ski Area
- Closed Waters - All Vessels
- Closed Waters - Motorised Vessels
- Swimming Prohibited area
- GPS Validation Point / Launching Ramp
- Over-beach Launching / Canoe Launching
- Toilet / Parking
- Submerged rock, Rock Awash
- Courtesy moorings



Water skiing

Water skiing involves being towed over water at a speed of 8 knots or more by a vessel.

It takes at least three people to go water skiing:

1. A driver of at least 17 years of age with an RST.
2. An observer of at least 14 years of age.
3. A person being towed. Vessels taking off with skiers always give way to vessels landing a skier.

Beach take-off and landings are only permitted in the designated take-off and landing areas.

Skiing is only permitted between the hours of sunrise to sunset, unless otherwise indicated. For further information, please visit our website or call 13 11 56.

Lifejackets and safety equipment

Skippers must CARRY a lifejacket minimum Level 100 for everyone on board when they are on any WA waterway.

Compulsory wearing of a lifejacket minimum Level 100 occurs when more than 400 metres from the shore in unprotected waters for children aged between one and 12 years and for everyone on board when the vessel is less than 4.8 metres.

Every person on board a personal water craft (PWC) must WEAR a lifejacket Level 50S or higher at all times, from launching until retrieval.

If skiing more than 400 metres from the shore in unprotected waters, skippers must ensure the required safety equipment is carried.

Recreational Skipper's Ticket

A person in charge of a recreational vessel with a motor of **6 horsepower or less** is **not** required to hold a Recreational Skipper's Ticket (RST).

A person in charge of a recreational vessel with a motor **greater than 6 horsepower** is required to hold an RST and carry it when boating.

Age restrictions
You must be 14 years or older to apply for an RST.

RST holders over 14 but under 16 years of age are restricted to operating during daylight hours at a speed less than 8 knots.

Personal water craft (PWC)

You must hold a Recreational Skipper's Ticket (RST) to operate a PWC. A skipper of a PWC aged between 14 and 16 years can only operate it during daylight hours and at a maximum speed of 8 knots.

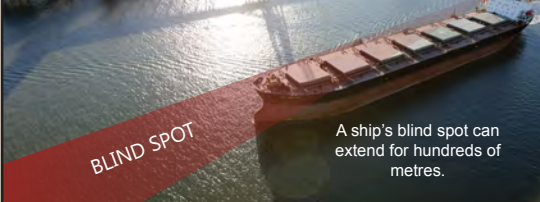
Every person on board a PWC must wear a lifejacket (minimum 50S) at all times. When travelling beyond 400 metres from shore in unprotected waters you need:

- A GPS enabled EPIRB or PLB - worn
- Flares or electronic visual distress signal device (EVDS)
- Beyond 4 nautical miles from shore in unprotected waters a marine radio must also be carried.

For further information, please visit our website or call 13 11 56.

Cross channels only when safe to do so

If unsure, contact the Fremantle Port on VHF Channel 16 for advice



A ship's blind spot can extend for hundreds of metres.

Basic rules of the waterways

- Vessel Overtaking Another**: Every overtaking vessel gives way (this includes sailing vessels).
- Power Vessels Meeting Head On**: Each vessel alters course to starboard (right).
- Power Vessels Meeting**: Give way to vessels on your starboard (right).
- Power Meeting Sailing Vessel**: Power gives way to sail except when sailing vessel is overtaking.
- Ships in Channels**: All vessels must keep clear of ships using or approaching the marked navigation channel ships.