

**LEGEND**

- Marsh and swampland
- Nature Reserve / National Park
- Railway, Clearance height, Bridge
- Major road
- Minor road
- Track
- Medical facility, Building
- Mean high water
- Mean low water
- Datum mark
- Cut
- Rock shoreline
- Sand drift, Anchoring prohibited
- GPS warning point, Headed, Gyro
- Car parking, Over-beach launching
- Boat ramp, Tide rack
- Exposed wreck, Submerged wreck
- Hazardous submerged reef
- Reef which covers and uncovers
- Coral reef / outcrop, Breakers
- Rock awash, Underwater rock
- Sounding above Datum
- Danger line
- 2m contour
- 5m contour
- 10m contour
- Depth in metres and decimetres
- Approximate contour
- Submarine cable
- Anchorage area, No anchorage area
- No lighting, Pilot boarding location
- Speed limit boundary
- Water skiing boundary
- Prohibited area boundary
- Various limits
- Port Authority / Harbour boundary
- Recommended track
- Outfall
- Dredged area boundary
- Sensitive area
- Marine protected area

**NAVIGATION MARKS**

- Lighthouse, major, minor light
- Beacon, port, starboard
- Safe water, isolated danger
- Spear buoy, port, starboard
- Pillar buoy, port, starboard
- Mooring buoy, yachting buoy
- Lead, front, rear

**CARDINAL MARKS**

- Indicates safe water to the North
- Indicates safe water to the South
- Indicates safe water to the East
- Indicates safe water to the West

**LIGHT CHARACTERISTICS**

Colour of light is white unless otherwise stated

- F - Fixed
- Fl - Flashing
- Fl (G) - Group flash
- Q - Quick flash
- LFl - Long flash
- OC - Occulting
- Is - Isophase
- Indicates lit navigation mark
- G - Green
- R - Red
- W - White
- Y - Yellow
- Bu - Blue
- s - Period in seconds
- m - Flash above height above MHHW
- M - Luminous range in nautical miles

**LIMITATION OF SPEED**

A person shall not drive a motor boat at a speed exceeding EIGHT (8) knots, or water ski (a) without the approval of the Department of Transport (i) in any water having a depth of less than 3 metres, or (ii) within 45 metres of a river bank or low water mark, (b) in or through a mooring area, (c) within 15 metres of a vessel under weigh, (d) within 45 metres of: (i) a moored vessel, (ii) a person in the water, or (iii) a party or wharf, or (e) through an arch of a bridge (except those which are gazetted).

AUSTRALIA - SOUTH COAST  
WESTERN AUSTRALIA  
**ALBANY**  
SCALE 1 : 25 000

**DEPTHS**  
Depths are shown in metres and decimetres, reduced to Sounding Datum, which is approximately lowest astronomical tide.

**HEIGHTS**  
Heights are shown in metres. Underlined figures are drying heights above Sounding Datum. Overhead clearance heights are above Highest Astronomical Tide. All other heights are above Mean Higher High Water.

**POSITIONS**  
Positions on this chart are referenced to the Map Grid of Australia, Zone 50, based on the Geocentric Datum of Australia 1994 (GDA94). For GPS use, this approximates WGS84.

**PROJECTION**  
Universal Transverse Mercator.

**SOURCES**  
From the latest information available to Department of Transport 2013, including Royal Australian Navy survey of 1980.

**NAVIGATION MARKS**  
IALA Maritime Buoyage System - Region A (Red to Port)

**CHART AMENDMENTS**  
The information provided on this chart is correct at time of publication. As this information is subject to change, ensure the latest version of the chart is used at all times and is kept up-to-date with reference to the following:

**NOTICES TO MARINERS**  
Changes of a safety or navigational nature will be reflected in Notices to Mariners. Current Notices are available from the DoT website at: [www.marine.gov.au/notices-to-mariners.aspx](http://www.marine.gov.au/notices-to-mariners.aspx)

**Navigable Waters Regulations**  
Changes to Navigable Waters Regulations are published in the Western Australian Government Gazette. Regulations for Navigable Waters can also be found at: [www.regulation.wa.gov.au](http://www.regulation.wa.gov.au)

**Marine Protected Areas**  
Refer to Department of Primary Industries and Regional Development (DPIRD) and Department of Biodiversity, Conservation and Attractions (DCA) publications for the latest information.

**CAUTION NOTES**

**Aquaculture**  
Mariners are advised that floating and submerged hazards associated with the aquaculture industry may exist in this area. The boundary is generally marked by buoys or beacons which may be lit.

**Mooring Zone**  
Tumulus moorings exist in this area.

**Scientific Instruments**  
Scientific instruments exist in this area, consisting of yellow spherical buoys with flashing yellow lights, trailing from orange floats on 10.20m lines. Mariners are advised to navigate the area with caution and keep well clear of the instruments at all times.

**TIDAL INFORMATION AND SOUNDING DATUM**

Place	Lat	Long	Mean High Water	Mean Low Water	Spring Range	Sounding and Tide Datum				
Albany	35°02'	117°53'	1.38	0.99	0.71	0.66	0.53	0.36	0.0	3.867m above PWD (BM 1981)

**NATIONAL PARKS AND NATURE RESERVES**  
National Parks and Nature Reserves are gazetted for the Protection of Flora, Fauna and Landscape values. Dumping of rubbish, lighting of fires (including ground fires), treating, pests, removal of rocks, soil and timber, driving off established tracks and disturbance of flora and fauna are all prohibited in National Parks and Nature Reserves. Camping is only allowed in gazetted areas of National Parks. Refer to Department of Biodiversity, Conservation and Attractions publications for further information on parks and reserves.

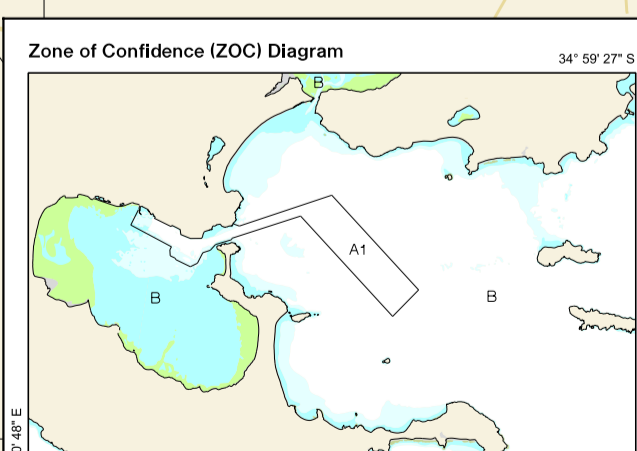
**LEEWIN CURRENT**  
The Leewin Current is most predominant during May to August with a surface current generally less than 1 knot. It has an average width of 30 nautical miles and extends to a depth of approximately 200 metres, carrying warm, low salinity water from the North West Shelf area along the continental shelf south to Cape Leeuwin and then east into the Great Australian Bight. For details of currents generally refer to R.A.N. Australia Pilot Vol 1.

**WESTERN ROCK LOBSTER FISHERY**  
Between November and June, extensive lobster fishing takes place between latitude 24°S and 34°S. Mariners are advised to keep well clear of lobster pot floats and submerged lines.

**FISHING AND AQUACULTURE**  
Fishing and aquaculture regulations apply throughout Western Australia. Refer to Department of Primary Industries and Regional Development publications for further information.

**ROADS AND TRACKS**  
The representation on this chart of any road or track is not necessarily evidence of a Public Right of Way.

**HISTORIC SHIPWRECKS**  
All wrecks, 75 years old or more, are protected under an Act which prohibits the removal of artefacts or willful damage of any sort. By this means, the sites will remain better preserved for divers in the future. Refer to WA Marine Museum for further information.



**ZOC CATEGORIES** (For details see Australian Seafarers Handbook AHP 20)

ZOC	Position Accuracy	Depth (d) Accuracy	Seafloor Coverage
A1	+5m	+0.50m - 1.5d	All significant seafloor features detected
A2	+20m	+1.00m - 2.5d	All significant seafloor features detected
B	+50m	+1.00m - 2.5d	Uncharted features hazardous to surface navigation are not expected but may exist
C	+500m	+2.00m - 5.0d	Depth anomalies may be expected
D	Worse than ZOC C		Large depth anomalies may be expected
U	Unassessed		The quality of the bathymetric data has yet to be assessed

