

NAVIGATION MARKS

- Lighthouse, major, minor light
- Beacon, port, starboard
- Safe water, isolated danger
- Spar buoy, port, starboard
- Pillar buoy, port, starboard
- Mooring buoy, yachting buoy
- Lead, front, rear
- Special Marks (yellow cross topmark) are not primarily to assist in navigation, but indicate special features

CARDINAL MARKS

- Indicates safe water when to the North
- Indicates safe water when to the South
- Indicates safe water when to the East
- Indicates safe water when to the West

LIGHT CHARACTERISTICS

Colour of light is white unless otherwise stated

- F - Fixed
- Fl - Flashing
- Fl (G) - Group flash
- Q - Quick flash
- LFl - Long flash
- OC - Occulting
- Is - Isophase
- indicates lit navigation mark
- G - Green
- Y - Yellow
- R - Red
- W - White
- s - Period in seconds
- m - Focal plane height above MHHW
- M - Luminous range in nautical miles

AUSTRALIA - WEST COAST
WESTERN AUSTRALIA
AUGUSTA
SCALE 1 : 25 000

DEPTHS
Depths are shown in metres and decimetres, reduced to Sounding Datum, which is approximately lowest water level.

HEIGHTS
Heights are shown in metres. Underlined figures are drying heights above Sounding Datum. Overhead clearance heights are above Highest Astronomical Tide. All other heights are above Mean Higher High Water.

POSITIONS
Positions on this chart are referenced to the Map Grid of Australia, Zone 50, based on the Geocentric Datum of Australia 1994 (GDA94). For GPS use, this approximates WGS84.

PROJECTION
Universal Transverse Mercator

SOURCES
From the latest information available to Department of Transport, 2014.

NAVIGATION MARKS
IALA Maritime Buoyage System - Region A (Red to Port)

CHART AMENDMENTS
The information provided on this chart is correct at time of publication. As this information is subject to change, ensure the latest version of the chart is used at all times and is kept up-to-date with reference to the following:

Notices to Mariners
Changes of a safety or navigational nature will be reflected in Notices to Mariners. Current Notices are available from DoT chart sales offices, approved chart agents and at <https://www.transport.wa.gov.au/maritime/nautical-charts.asp>.

Navigable Waters Regulations
Changes to Navigable Waters Regulations are published in the Western Australian Government Gazette. Regulations for Navigable Waters can also be found at <http://www.transport.wa.gov.au>.

Marine Protected Areas
Refer to Department of Primary Industries and Regional Development (DPIRD) and Department of Biodiversity, Conservation and Attractions (DBCA) publications for the latest information.

MARINE SANCTUARY
IBA Sanctuaries may be defined with floating yellow lit marker buoys. Refer to Department of Biodiversity, Conservation and Attractions publications for further information.

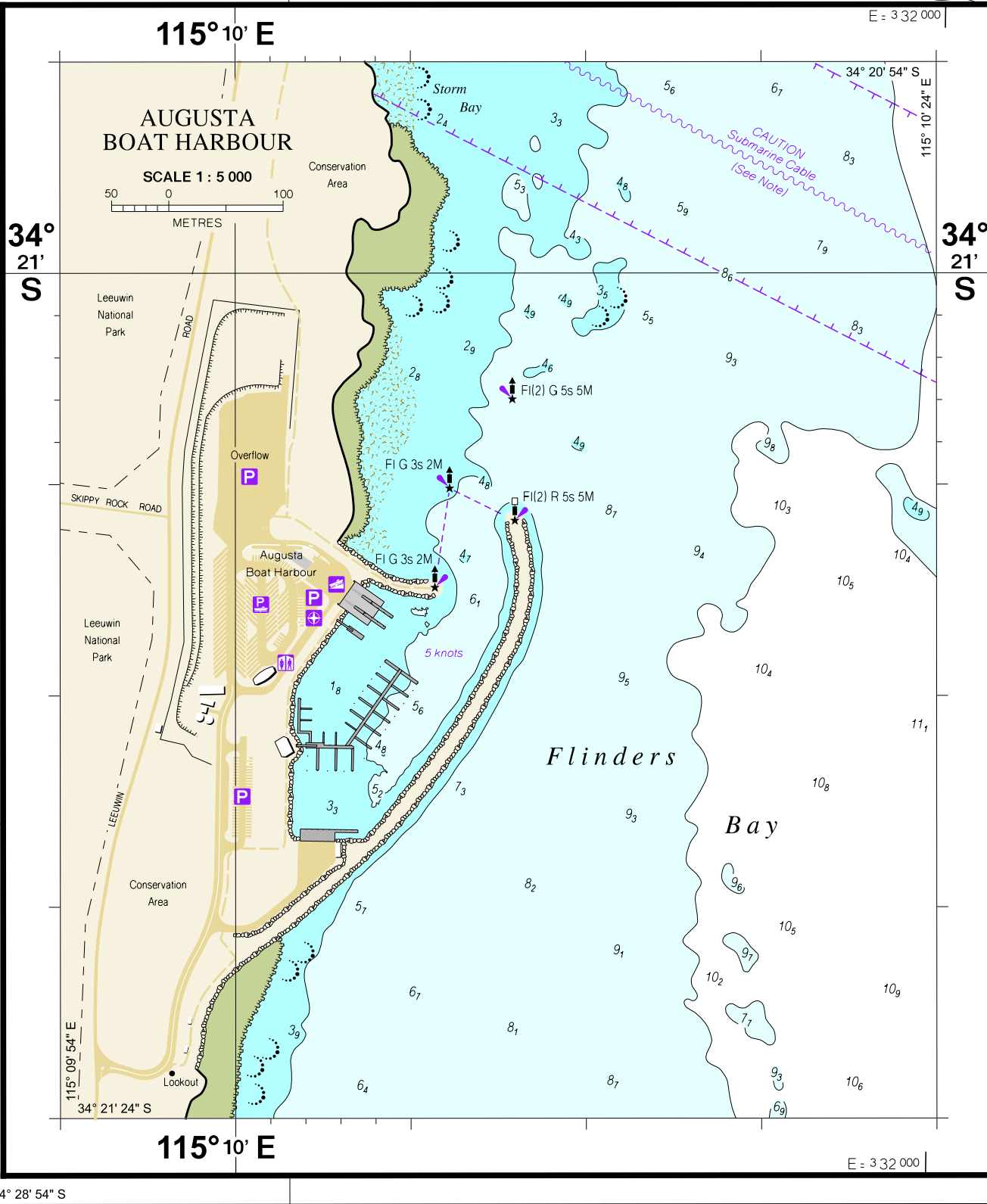
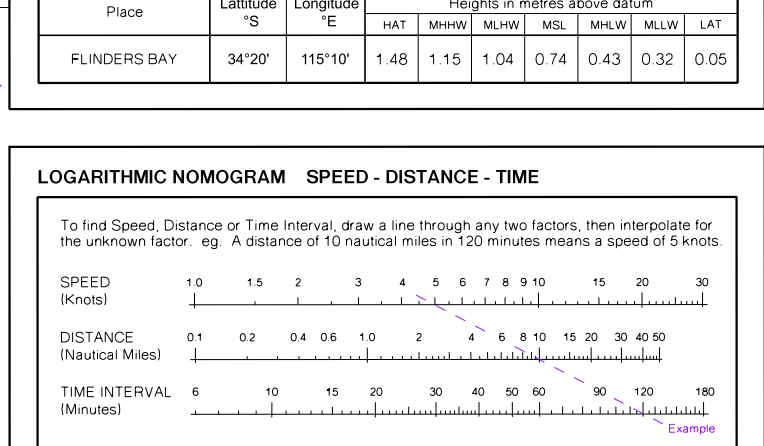
CAUTION NOTES
Heavy Swells
Care required when navigating the entrance of the Blackwood River. Swellments in the entrances may change significantly following storm events. Tidal flow exiting the Hardy Inlet combined with moderate to heavy swell from Flinders Bay can make navigating the entrance hazardous.

Aquaculture
Mariners are advised that floating and submerged hazards may exist in this area.

Submarine Cable
The steel housing of anchor and damage to the submarine cable, mariners are advised not to anchor within 100 metres either side of the cable route.

TIDAL INFORMATION AND SOUNDING DATUM

Place	Latitude	Longitude	Heights in metres above datum						
			FT	M	MSL	MLLW	LAT		
FLINDERS BAY	34°20'	115°10'	1.48	1.15	1.04	0.74	0.43	0.32	0.05



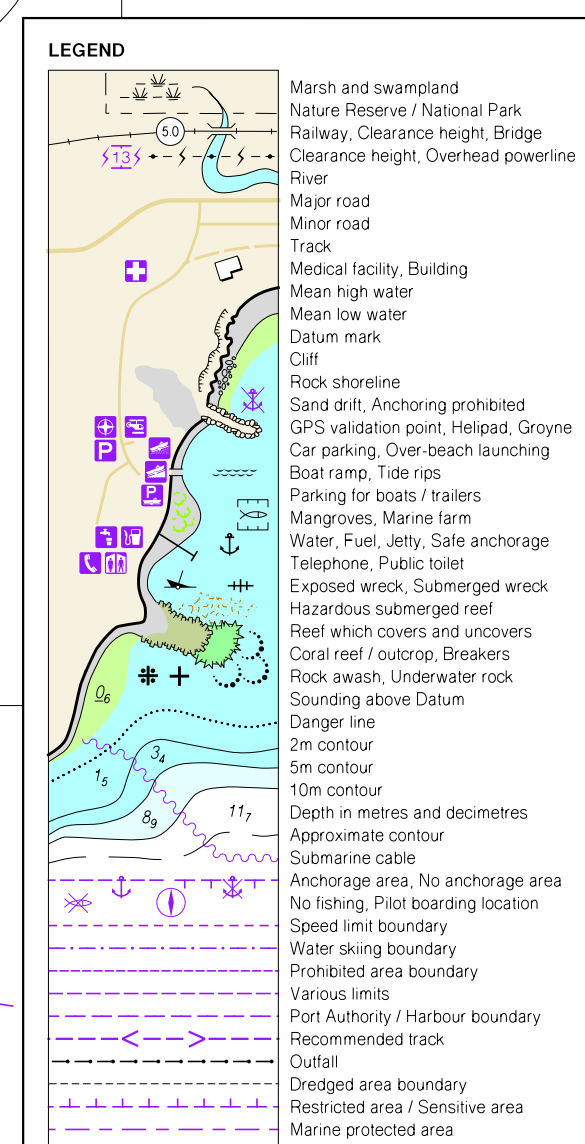
NATIONAL PARKS AND NATURE RESERVES
National Parks and Nature Reserves are gazetted for the Protection of Flora, Fauna and Landscape values. Dumping of rubbish, lighting of fires (including ground fires), firearms, pets, removal of rocks, soil and timber, driving off established tracks and disturbance of flora and fauna are all prohibited in National Parks and Nature Reserves. Camping is only allowed in gazetted areas of National Parks. Refer to Department of Biodiversity, Conservation and Attractions publications for further information on parks and reserves.

LEEUWIN CURRENT
The Leeuwin Current is most predominant during May to August with a surface current generally less than 1 knot. It has an average width of 30 nautical miles and extends to a depth of approximately 200 metres, carrying warm, low salinity water from the North West Shelf area along the continental shelf south to Cape Leeuwin and then east into the Great Australian Bight. For details of currents generally refer to R.A.N. Australia Pilot Vol 11.

FISHING
Fishing regulations apply throughout Western Australia. Refer to Department of Primary Industries and Regional Development publications for further information.

ROADS AND TRACKS
The representation on this chart of any road or track is not necessarily evidence of a Public Right of Way.

HISTORIC SHIPWRECKS
All wrecks, 75 years old or more, are protected under an Act which prohibits the removal of artefacts or willful damage of any sort. By this means, the sites will remain better preserved for divers in the future. Refer to WA Maritime Museum for further information.



Zone of Confidence (ZOC) Diagram

(For details see Australian Seafarers Handbook AHP 20)

ZOC	Position Accuracy	Depth Accuracy	Sounding Coverage
A1	+15m	+0.50m -15%	All significant seabed features detected
A2	+20m	+1.00m -25%	All significant seabed features detected
B	+50m	+1.00m -25%	Uncharted features hazardous to surface navigation are not expected but may exist
C	+500m	+2.00m	Depth anomalies may be expected
D	Worse than ZOC C	-55%	Large depth anomalies may be expected
U	Unassessed	-	The quality of the bathymetric data has yet to be assessed