

AUSTRALIA - WEST COAST
WESTERN AUSTRALIA
BUNBURY TO PORT GEOGRAPHE
SCALE 1 : 50 000

DEPTHS
Depths are shown in metres and decimetres, reduced to Sounding Datum, which is approximately lowest water level.

HEIGHTS
Heights are shown in metres. Underlined figures are drying heights above Sounding Datum. Overhead clearance heights are above Highest Astronomical Tide. All other heights are above Mean Higher High Water.

POSITIONS
Positions on this chart are referenced to the Map Grid of Australia, Zone 50, based on the Geocentric Datum of Australia 1994 (GDA94). For GPS use, this approximates WGS84.

PROJECTION
Universal Transverse Mercator

SOURCES
From the latest information available to Department of Transport (DoT) including Royal Australian Navy surveys of 1972 and 1975 and DoT surveys from 1977 to 2005.

NAVIGATION MARKS
IALA Maritime Buoyage System - Region A (Red to Port).

CHART AMENDMENTS
The information provided on this chart is correct at time of publication. As this information is subject to change, ensure the latest version of the chart is used at all times and is kept up-to-date with reference to the following:

Notices to Mariners
Changes of a safety or navigational nature will be reflected in Notices to Mariners. Current Notices are available from DoT chart sales offices, approved chart agents and at <https://www.transport.wa.gov.au/marine/nautical-charts.asp>.

Navigable Waters Regulations
Changes to Navigable Waters Regulations are published in the Western Australian Government Gazette. Regulations for Navigable Waters can also be found at www.wa.gov.au.

Marine Protected Areas
Refer to Department of Primary Industries and Regional Development (DPIRD) and Department of Biodiversity, Conservation and Attractions publications for the latest information.

MARINE SANCTUARY
WA Sanctuaries may be defined with floating marker buoys. Refer to Department of Biodiversity, Conservation and Attractions publications for further information.

CAUTION
Care required when navigating The Cut. Bathymetry in The Cut may change significantly following storm events. Tidal flow exiting the Leschenault Estuary combined with moderate to heavy swell from Koombana Bay can make navigating The Cut hazardous. Mariners are advised to proceed with caution.

Commercial Shipping
Mariners are advised that all recreational vessels should stay well clear of all commercial shipping vessels at all times.

TIDAL INFORMATION AND SOUNDING DATUM

Place	Lat	Long	HAT	MLW	MLLW	MSL	Mean	Lowest	Lowest	Sounding and Total Datum
BUNBURY	33°19'	115°38'	1.33	1.07	0.95	0.71	0.48	0.36	0.12	3.961 below BM A103 (Bunbury)
BUSSETON	33°33'	115°21'	1.50	1.14	0.94	0.90	0.62	0.66	0.29	3.626 below BM A463 (Busseton)



I N D I A N

O C E A N

Geographe Bay

Womersley Inlet (seasonal sandbar)

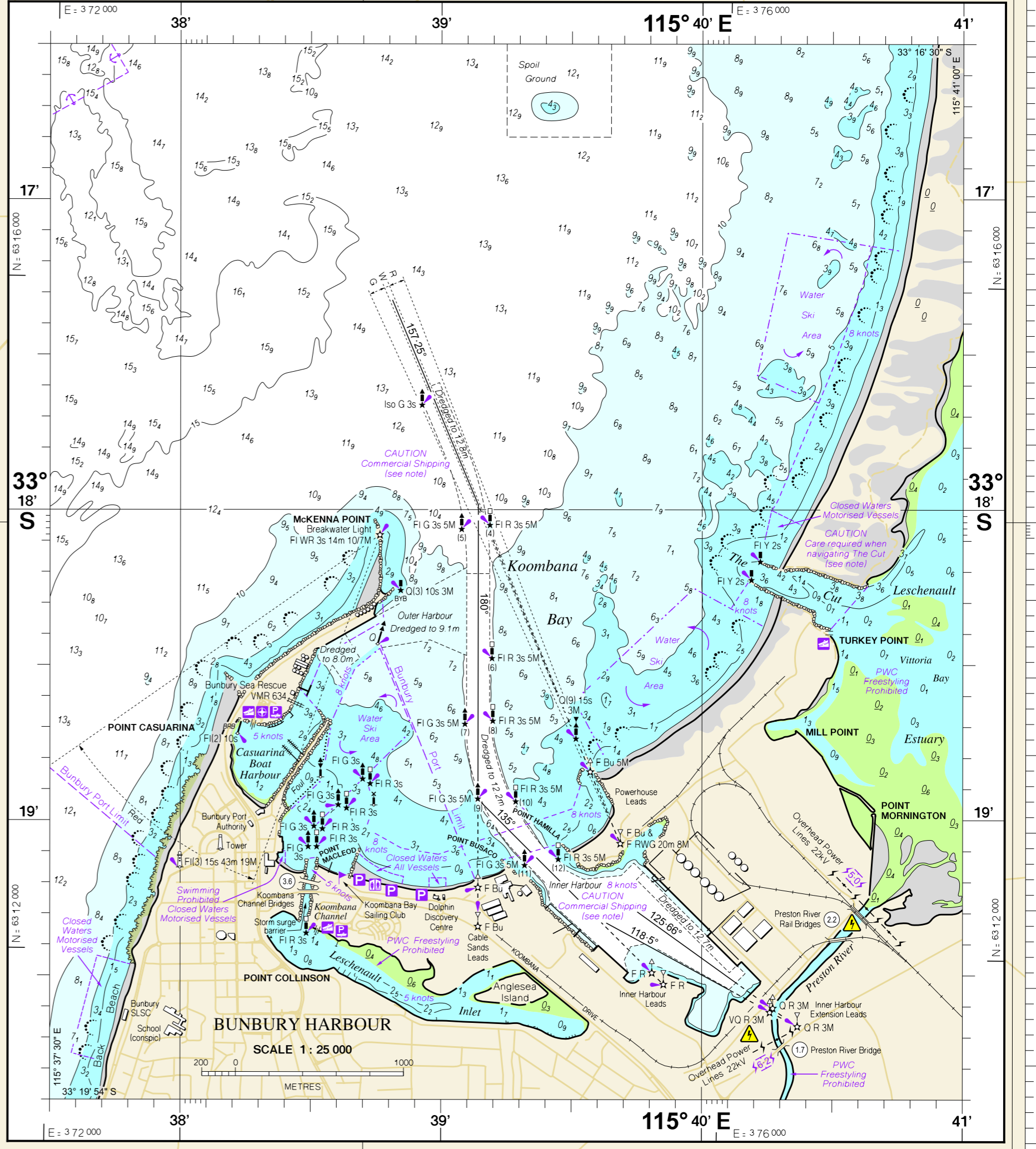
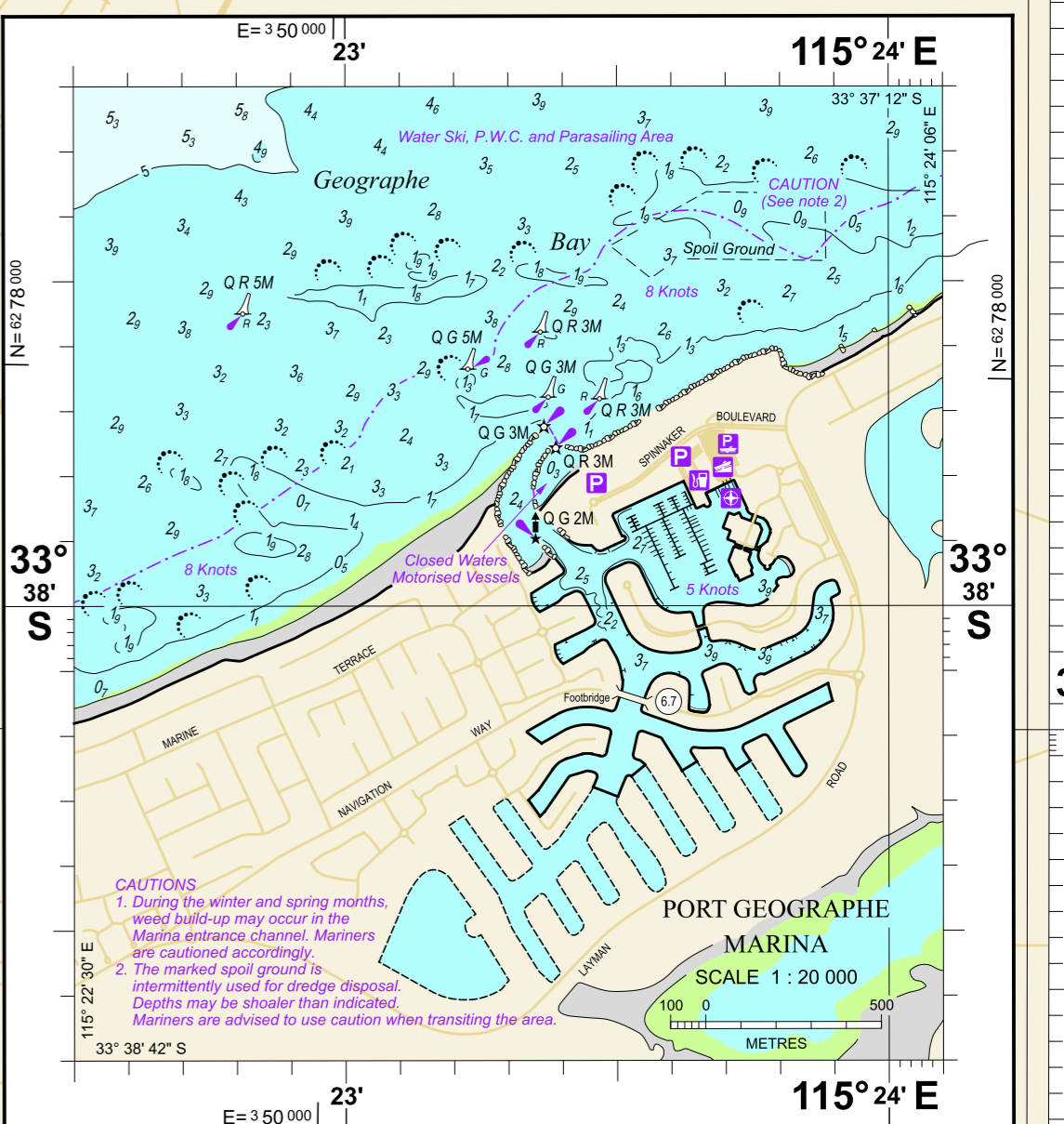
Vasse Estuary

- NAVIGATION MARKS**
- Lighthouse, major, minor light
 - Beacon, port, starboard
 - Safe water, isolated danger
 - Spar buoy, port, starboard
 - Pillar buoy, port, starboard
 - Mooring, conical, yachting buoy
 - Lead, front, rear
 - Special Marks (yellow cross topmark) are not primarily to assist in navigation, but indicate special features
- CARDINAL MARKS**
- Indicates safe water to the North
 - Indicates safe water to the South
 - Indicates safe water to the East
 - Indicates safe water to the West
- LIGHT CHARACTERISTICS**
- Colour of light is white unless otherwise stated
 - F - Flashed
 - Fl - Flashing
 - Fl (G) - Group-flash
 - Q - Quick-flash
 - LF - Long-flash
 - OC - Occuring
 - Is - Isophase
 - Indicates lit navigation mark
 - Green - Red - White
 - Yellow - Blue
 - Period in seconds
 - Period in minutes
 - Focal plane height above MHHW
 - Luminous range in nautical miles

CAUTION
Overhead powerlines exist at various locations over waterways on this chart

- LEGEND**
- Marsh and swampland
 - Nature Reserve/National Park
 - Railway, Clearance height, Bridge
 - Clearance height, Bridge
 - Overhead powerline
 - River
 - Major road
 - Minor road
 - Track
 - Medical facility, Building
 - Mean high water
 - Mean low water
 - Datum mark
 - Rock shoreline
 - Sand drift, Anchoring prohibited
 - GPS validation point, Helipad, Gyro
 - Car parking, Over beach launching
 - Boat ramp, Tide rips
 - Public toilet
 - Exposed wreck, Submerged wreck
 - Hazardous submerged reef
 - Reef which covers and uncovers
 - Conical/cylindrical Breakers
 - Rock wash, Underwater rock
 - Sounding above Datum, Fish haven
 - 5m contour
 - 2m contour
 - 1m contour
 - Depth in metres and decimetres
 - Approximate contour
 - Speed limit boundary
 - Anchorage area, No anchorage area
 - No fishing, Pilot boarding location
 - Speed limit boundary
 - Water skiing boundary
 - Prohibited area boundary
 - Port Authority/ Harbour boundary
 - Recommended track
 - Quail
 - Dredged area boundary
 - Restricted area / Sensitive area
 - Marine protected area

RADIO COMMUNICATION
ACRM (Australian Citizen Radio Monitor) - VHF FMC. These bases are available for those boating around Geographe Bay and Cape Naturaliste. Vessels can log on and off when going to sea.
Manned channels as follows:
27MHz - channel 88 (EMERGENCY AND CALLING)
VHF - channel 16 (Marine)
A 24 hour watch is maintained, with normal operation between 0600 and 2000 hours, and EMERGENCIES ONLY outside of these hours.
ALL EMERGENCIES MUST BE REPORTED TO THE NEAREST POLICE STATION.
27MHz radios for emergency use only.
Call sign: BUNBURY SEA RESCUE - VMR 634
Call sign: NATURALISTE SEA RESCUE - VMR 631
Call sign: BUSSETON VOLUNTEER MARINE RESCUE GROUP - VMR 640



Zone of Confidence (ZOC) Diagram

ZOC CATEGORIES
(For details see Australian Seafarers Handbook AHP 20)

ZOC	Position Accuracy	Depth (d) Accuracy	Seafloor Coverage
A1	+5m	+0.50m	All significant seafloor features detected
A2	+20m	+1.00m	All significant seafloor features detected
B	+50m	+1.00m	Uncharted features hazardous to surface navigation are not expected but may exist
C	+100m	+2.00m	Depth anomalies may be expected
D	Worse than 200 C		Large depth anomalies may be expected
U	Unassessed		The quality of the survey data has yet to be assessed

NATIONAL PARKS AND NATURE RESERVES
National Parks and Nature Reserves are gazetted for the Protection of Flora, Fauna and Landscape values. Dumping of rubbish, lighting of fires (including ground fires), firearms, pets, removal of rocks, soil and timber, driving of established tracks and disturbance of flora and fauna are all prohibited in National Parks and Nature Reserves. Camping is only allowed in gazetted areas of National Parks. Refer to Department of Biodiversity, Conservation and Attractions publications for further information on parks and reserves.

LEEUEWIN CURRENT
The Leeuwin Current is most predominant during May to August with a surface current generally less than 1 knot. It has an average width of 30 nautical miles and extends to a depth of approximately 200 metres, carrying warm, low salinity water from the North West Shelf area along the continental shelf south to Cape Leeuwin and then into the Great Australian Bight. For details of currents generally refer to RAN Australia Coast Pilot.

WESTERN ROCK LOBSTER FISHERY
Fishing regulations apply throughout Western Australia. Refer to Department of Primary Industries and Regional Development publications for further information.

FISHING
Fishing regulations apply throughout Western Australia. Refer to Department of Primary Industries and Regional Development publications for further information.

ROADS AND TRACKS
The representation on this chart of any road or track is not necessarily evidence of a Public Right of Way.

HISTORIC SHIPWRECKS
All wrecks, 10 years old or more, are protected under an Act which prohibits the removal of artefacts or willful damage of any sort. By this means, the sites will remain better preserved for divers in the future. Refer to WA Maritime Museum for further information.