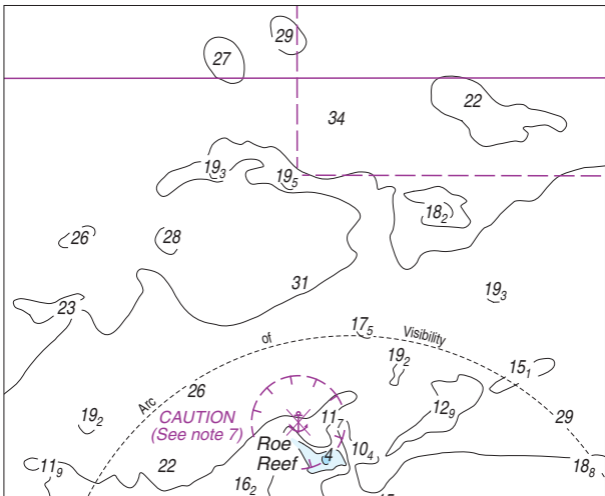


To accompany DOT Notice to Mariners WA001-19



Block for chart WA001 edition 16 (front)

(79.5mm x 65.0mm)

When printing, ensure Page Scaling is set to None

6. Obstruction at  $32^{\circ}09'13.00''\text{S}$   $115^{\circ}40'42.00''\text{E}$  is a protected heritage site. All vessels are to remain outside the area. Possible penalties apply for any interference to features above and below sea level.
7. Unexploded Ordnance area with radius 463m centred on  $31^{\circ}58.25'\text{S}$   $115^{\circ}32.10'\text{E}$  is safe for surface navigation only. It is not safe for anchoring, trawling or seabed activities.
8. Parmelia and Success Banks are subject to seasonal shoaling, mariners are advised to navigate with caution.

**TIDAL INFORMATION AND SOUNDING DATUM**

Place	Lat °S	Long °E	Heights in metres above datum							Sounding and Tidal Datum
			HAT	MHHW	MLHW	MSL	MHLW	MLLW	LAT	
FREMANTLE	$32^{\circ}03'$	$115^{\circ}44'$	1.36	0.98	0.80	0.76	0.67	0.55	0.21	3.320m below NMV/F/6A
ROTTNEST	$32^{\circ}00'$	$115^{\circ}34'$	1.42	0.91	0.66	0.68	0.54	0.44	0.22	2.842m below BM PWD A283

**LOGARITHMIC NOMOGRAM SPEED - DISTANCE - TIME**

To find Speed, Distance or Time Interval, draw a line through any two factors, then interpolate for the unknown factor. eg. A distance of 10 nautical miles in 120 minutes means a speed of 5 knots.

