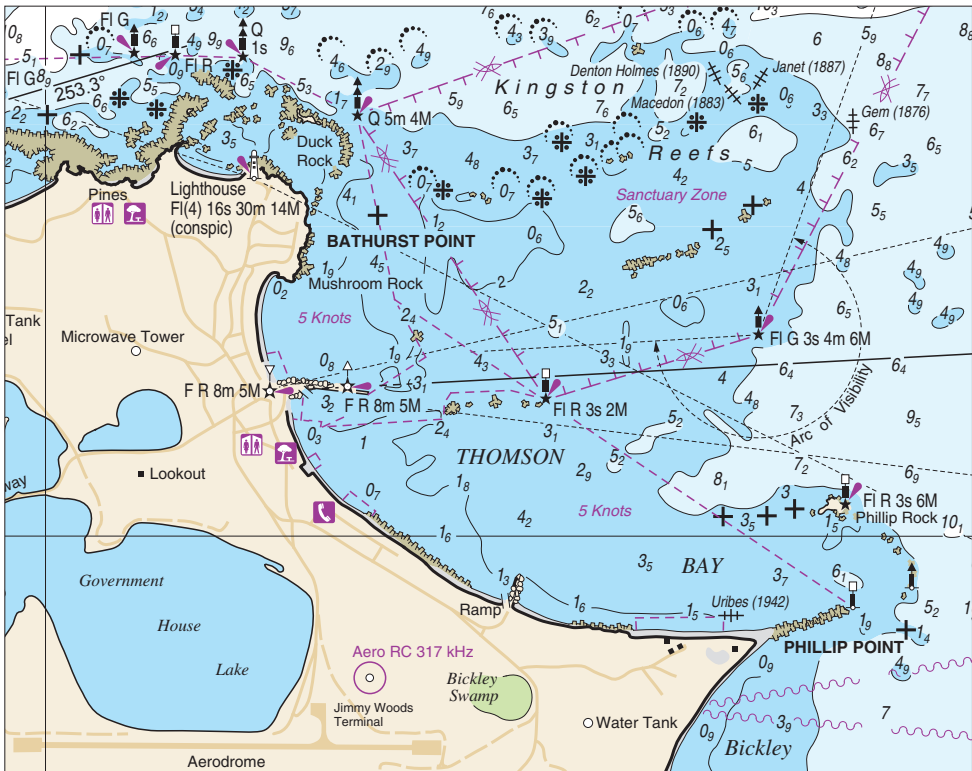


(258.1mm x 197.0mm)

Block for chart WA412 edition 6 (reverse)  
When printing, ensure Page Scaling is set to None

To accompany DOT Notice to Mariners WA412-4



**CAUTION - Breaking Swells**

Passages through the reefs are subject to breaking swells and are, in these conditions, dangerous for small craft to transit. This is particularly so during the winter months in the northern bays, and the summer months in the southern bays. Furthermore, uncharted submerged hazards may exist in the bays and anchorages. Mariners are cautioned accordingly.

**CAUTION - Unexploded Ordnance**

An area with radius 463m centred on 31°58.25'S 115°32.10'E is safe for surface navigation only. It is not safe for anchoring, trawling or seabed activities.

**CAUTION - 5 & 8 Knot Speed Restriction Area**

Vessels exceeding 24m in length are restricted to 8 knots. All smaller vessels are restricted to 5 knots.

**TIDAL INFORMATION AND SOUNDING DATUM**

Place	Latitude °S	Longitude °E	Heights in metres above datum					
			HAT	MHHW	MLHW	MSL	MHLW	MLLW
Thomson Bay	32°00'	115°33'	1.42	1.03	0.93	0.68	0.43	0.33

