

Marine Protected Areas

Refer to the Departments of Fisheries and Conservation and Land Management (CALM) publications for the latest information.

CAUTION

Care required when navigating The Cut

Bathymetry in The Cut may change significantly following storm events.

Tidal flow exiting the Leschenault Estuary combined with moderate to heavy swell from Koombana Bay can make navigating The Cut hazardous.

Mariners are advised to proceed with caution.

Commercial Shipping

Mariners are advised that all recreational vessels should stay well clear of all commercial shipping vessels at all times.

Depths may vary

Bathymetry in the Colлие River entrance channel is subject to change. Mariners are advised to navigate with caution. Soundings shown are from June 2005 survey.

Desalination Outfall

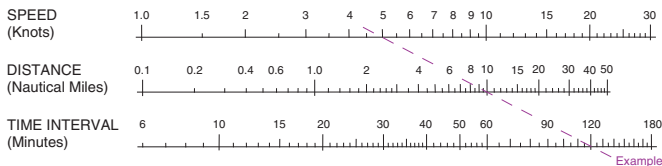
Submarine infrastructure exists in this area and may present a possible hazard to the anchoring of vessels. Mariners are advised to navigate with caution.

TIDAL INFORMATION AND SOUNDING DATUM

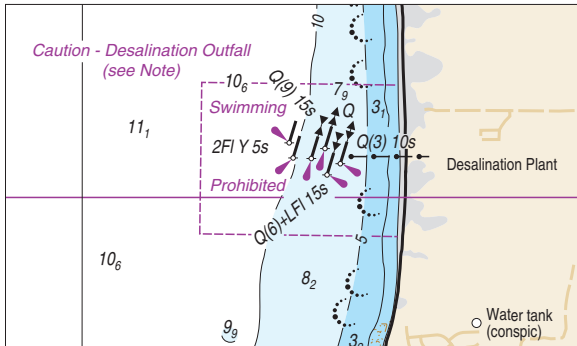
Place	Latitude °S	Longitude °E	Heights in metres above datum						
			HAT	MHHW	MLHW	MSL	MHLW	MLLW	LAT
Bunbury	39°19'	115°38'	1.31	1.03	0.92	0.68	0.44	0.53	0.08
Samphire Bay	33°18'	115°42'	1.18	0.88	0.84	0.67	0.50	0.46	0.36
Bouvard	32°37'	115°39'	1.23	0.99	0.89	0.69	0.48	0.39	0.19

LOGARITHMIC NOMOGRAM SPEED - DISTANCE - TIME

To find Speed, Distance or Time Interval, draw a line through any two factors, then interpolate for the unknown factor. eg. A distance of 10 nautical miles in 120 minutes means a speed of 5 knots.



To accompany DOT Notice to Mariners WA776-3



Block for chart WA776 edition 3 (front) (75.9mm x 45.4mm)
When printing, ensure Page Scaling is set to None