

sunrise.

CANNING RIVER

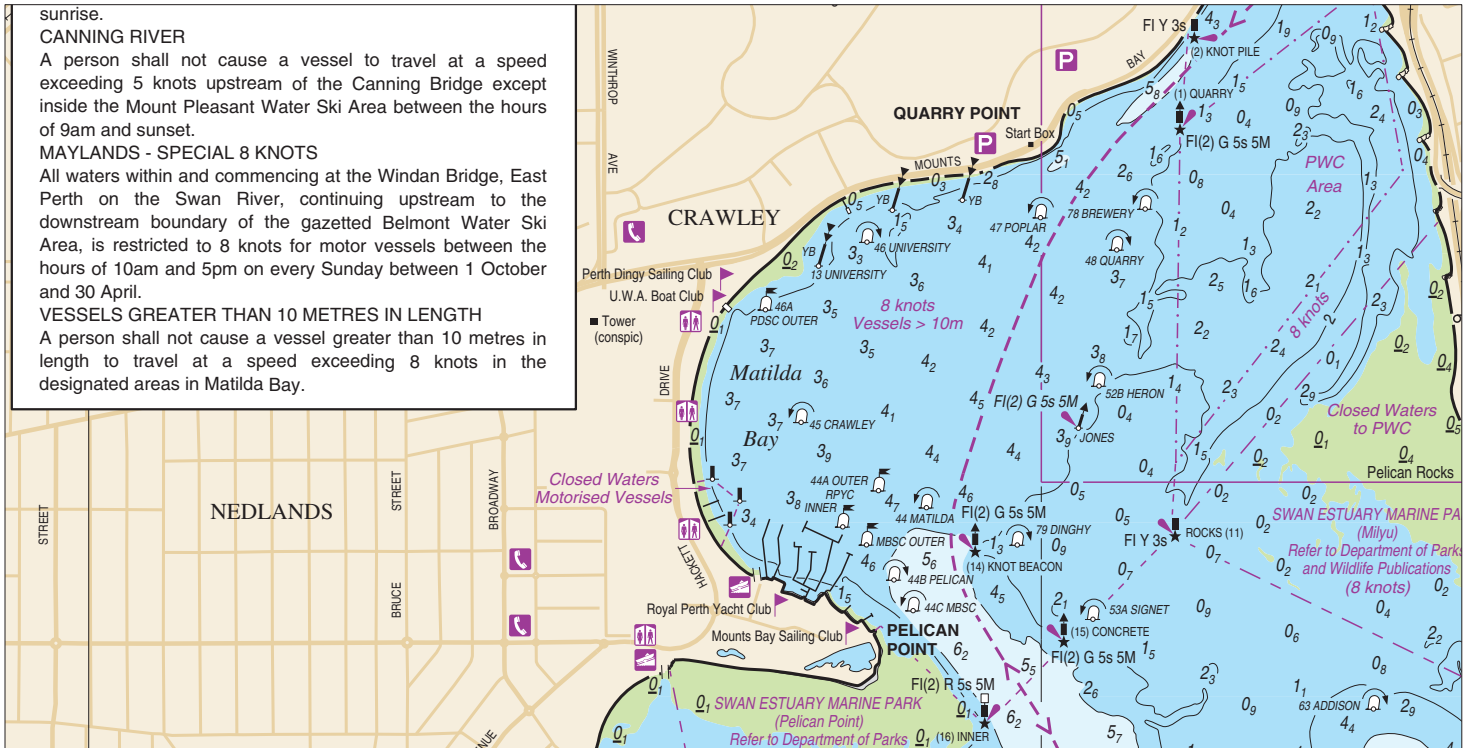
A person shall not cause a vessel to travel at a speed exceeding 5 knots upstream of the Canning Bridge except inside the Mount Pleasant Water Ski Area between the hours of 9am and sunset.

MAYLANDS - SPECIAL 8 KNOTS

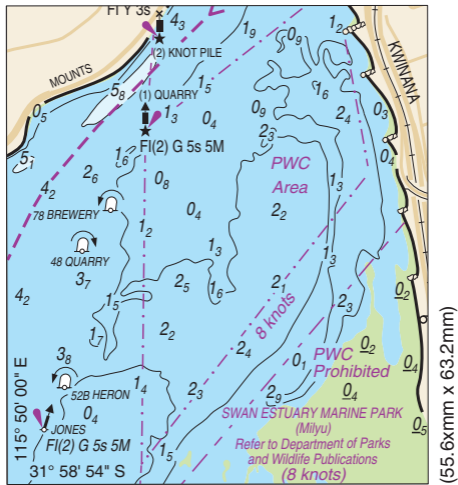
All waters within and commencing at the Windan Bridge, East Perth on the Swan River, continuing upstream to the downstream boundary of the gazetted Belmont Water Ski Area, is restricted to 8 knots for motor vessels between the hours of 10am and 5pm on every Sunday between 1 October and 30 April.

VESSELS GREATER THAN 10 METRES IN LENGTH

A person shall not cause a vessel greater than 10 metres in length to travel at a speed exceeding 8 knots in the designated areas in Matilda Bay.



To accompany DOT Notice to Mariners WA898-17
page 2 of 2



Block for chart WA898 (back) edition 7
When printing, ensure Page Scaling is set to None