

2017-18

WA PORTS INFOGRAPHIC

TOTAL TRADE

PORT AUTHORITIES 744.5M
OTHER PORTS 233.4M



978M Tonnes THROUGHPUT

Source: The Bureau of Infrastructure, Transport and Regional Economics

WA EXPORTS



28% OF THE NATION'S EXPORTS BY VALUE



62% OF THE NATION'S EXPORTS BY WEIGHT

ASSETS AND TRADE

\$2.2B worth of ASSETS

\$130B worth of TRADE through Port Authority Ports



VALUE OF TRADE

\$60.1B CHINA

\$16.5B JAPAN

\$7.1B SOUTH KOREA

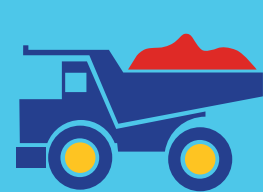
\$8.6B HONG KONG

\$3.0B SINGAPORE

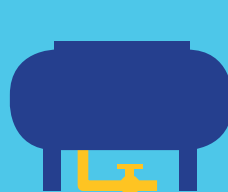
WHERE IT GOES

IRON ORE CHINA 82%
PETROLEUM JAPAN 50%
GOLD CHINA 52%

MAJOR EXPORT VALUES AND VOLUMES



\$61.7B
826M Tonnes
IRON ORE



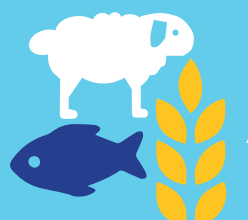
\$19.1B
38M Tonnes
LNG



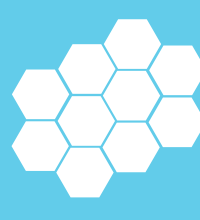
\$11.4B
212 Tonnes
GOLD

Source: WA Department of Mines, Industry and Safety. (All WA Ports including Shipping and Pilotage Ports)

OTHER EXPORTS



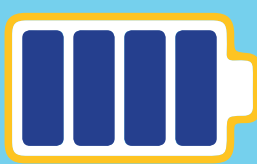
\$7.6B
AGRICULTURE, FIBRE AND FISHERIES



\$5.9B
ALUMINA



\$4.7B
OIL



\$2.3B
NICKEL

\$1.2B
LITHIUM & OTHERS

\$0.4B
MINERAL SANDS INCLUDING ZIRCON

\$0.5B
COBALT

Source: Department of Primary Industries and Regional Development 2017

STATE FUNDING

2018-19 to 2021-22
ASSET INVESTMENT PROGRAM
OF \$570.3M FOR

Fremantle Port Authority \$205.7M

Kimberley Ports Authority \$13.0M

Mid West Ports Authority \$24.0M

Pilbara Ports Authority \$286.2M

Southern Ports Authority \$41.5M

STATE DIVIDENDS AND TAXES

\$356M CONTRIBUTION to STATE FINANCES in the form of TAXES and DIVIDENDS 2017-18 financial year



FREIGHT MOVEMENT

Source: Australian Bureau of Statistics 30.31 Merchandise Exports and Imports by Mode of Transport 2017



VESSEL VISITS

9,609 VESSEL VISITS TO Port Authority Ports

Source: Tourism WA, Western Australia Cruising Snapshot

TOURISM

130,000 CRUISE PASSENGERS

119 CRUISE SHIPS INJECTING \$387.4M

COMMUNITY

\$703k to COMMUNITY GROUPS



26 PORT CONSULTATIONS with COMMUNITY across 8 regional areas

PORT AUTHORITY BOARDS

FIVE PORT AUTHORITY BOARDS

2014

2018

