



Department of
Transport

Cycling Trends in WA 2019-20



Key Findings

Overall network (metropolitan + regional) change of +17.4%*, driven by gains in both weekday (+11.5%) and weekend cycling (+31.3%).

82% of counter sites with data available were **up by >5%**.

Strong growth (+15%) across the CBD cordon, especially on weekends, with a sharp reversal of recent negative trends seen over the past few years.

Positive gains across the network, including regional locations which experienced **growth of +23%** overall.

* Comparisons using 39 counter sites with available data for FY 2018-19 vs FY 2019-20

Introduction

WA's cycle network is monitored using currently 53 permanent bicycle counters located primarily on PSPs and RSPs in the Perth Metropolitan Area, with a further 9 counters located outside the metro area. These counters provide an accurate, continuous count of bicycle traffic at each of the counter locations.

The counters have been installed progressively since mid-2008 as the network has developed and expanded. While the counters can provide an accurate count of cycling at the counter sites there are of course numerous cycling routes that are not captured in the current network. Equally, without detailed GPS or origin-destination data counts cannot definitively be transformed into numbers of cyclists.

For these reasons, the analysis within this report should be considered as indicative rather than absolute indicators of cycling trends in WA.

The report following presents the usage trends on the WA cycle network for FY 2019-2020, along with providing a discussion around methodological improvements and data quality. The global COVID pandemic covers some of this FY time period, and changes on working practices and social distances and isolation rules may have impacted on cycle network usage a result, compared to previously seen usage patterns.

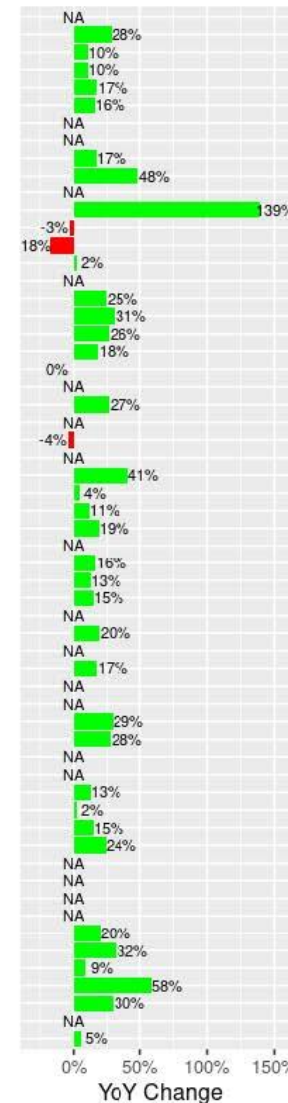
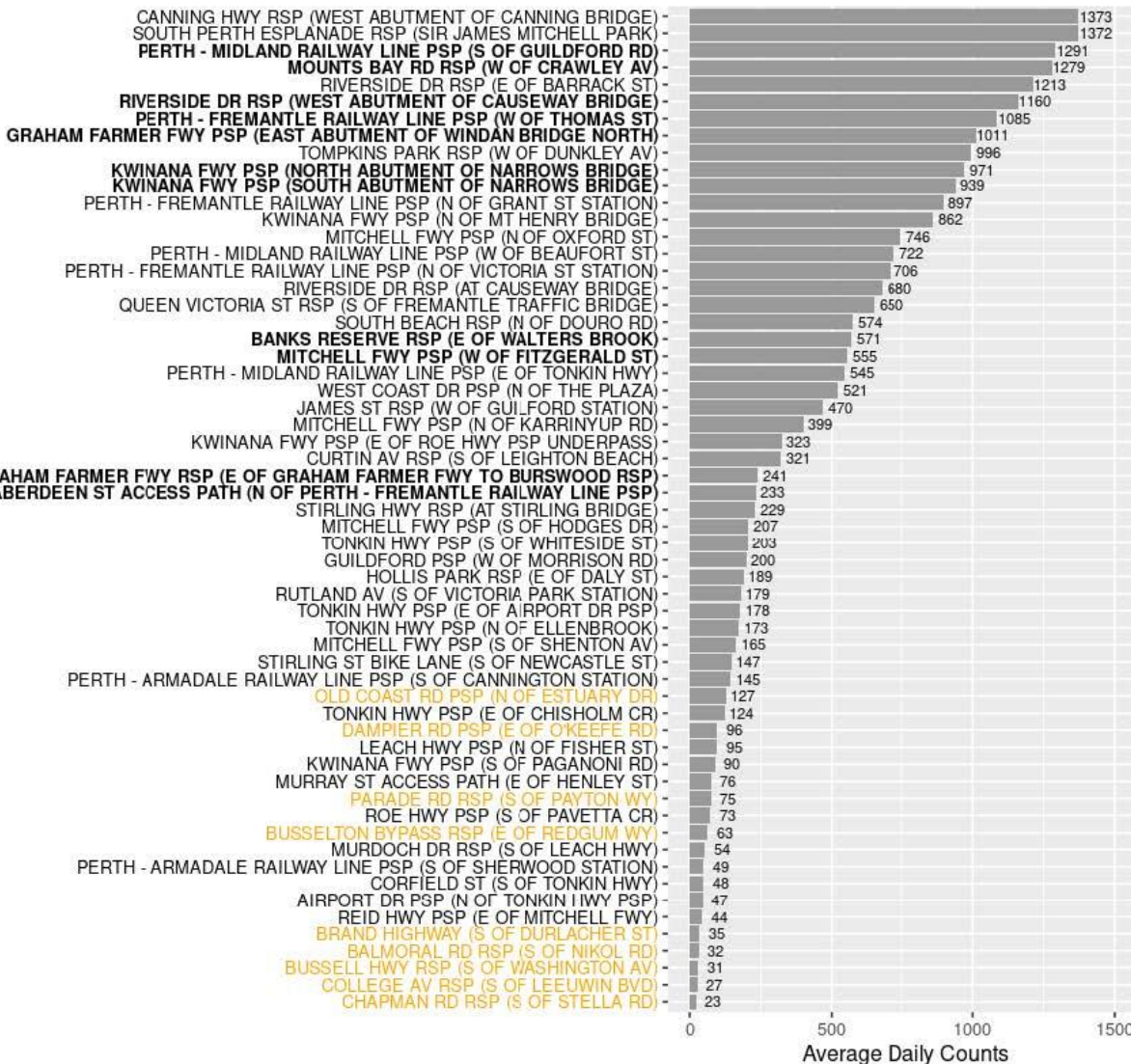
Overall network change

Overall network (metropolitan + regional sites) change of **+17.4%** from 2018-2019 FY counts, driven by significant gains in both weekday and weekend cycling.

Financial Year	Day Type	Number of counters	Cycle counts	Previous FY counts	Average daily counts	Previous FY daily counts	% change Year on year
2020	All days	39	6,655,880	5,644,894	18,193	15,496	+17.4%
2020	Weekdays	39	4,462,340	3,960,857	17,714	15,885	+11.5%
2020	Weekends	39	2,193,540	1,684,037	19,249	14,660	+31.3%

Note: To avoid misrepresentation, yearly figures are only reported for counter sites with at least 11 complete calendar months of data (33 metro, 6 regional).

FY 2019/20 sites (weekdays and weekends combined)



82% (32) of sites with available data (39) were up by >5%

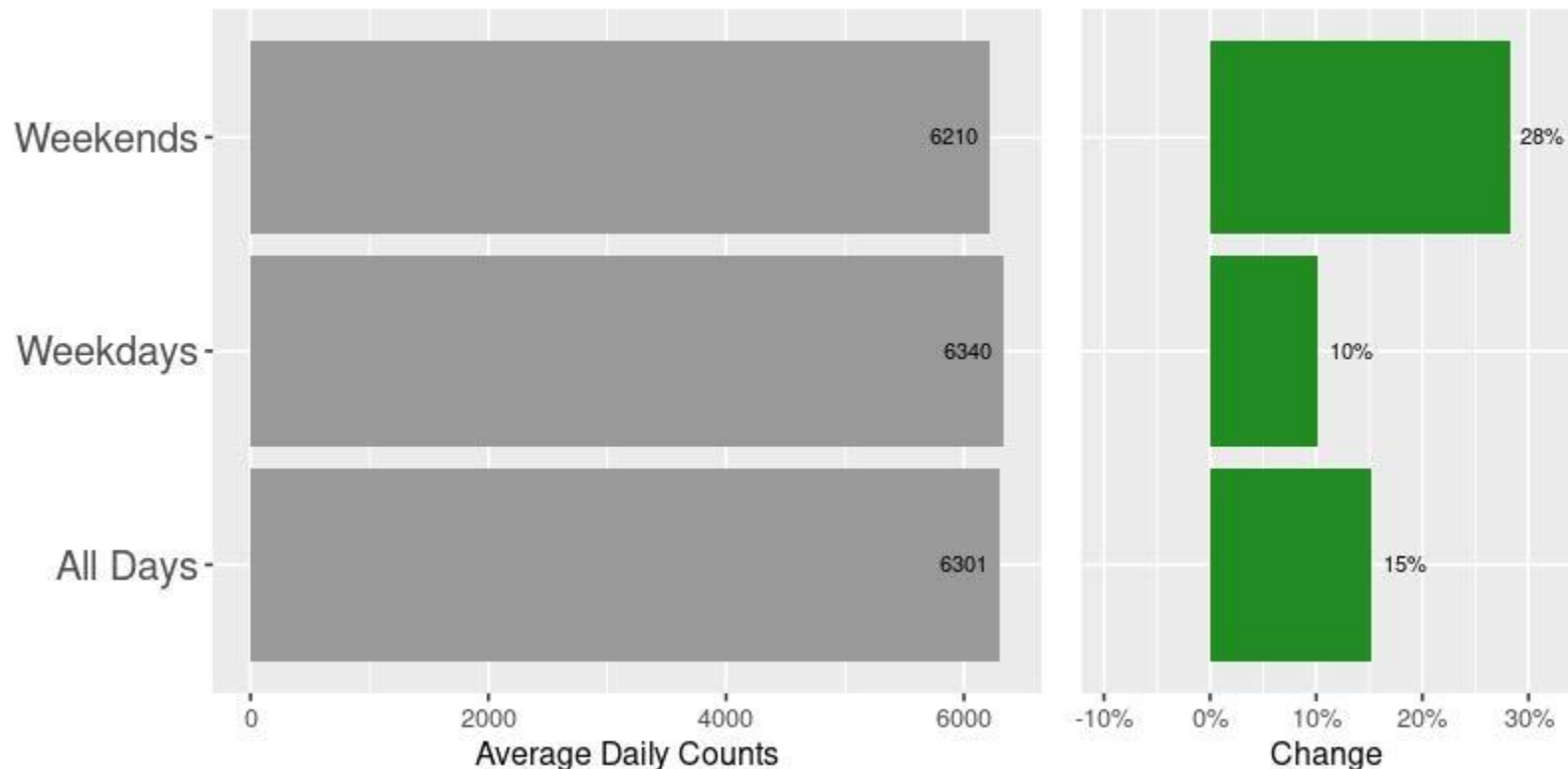
Sites in **bold** are Perth CBD cordon. Sites in **orange** are in regional WA.

Note: North (Hutton St widening) and South (Smart Freeway) Freeway roadworks likely impacted on site counts and data availability for a number of previously high-count sites

“NA” indicates not enough data for comparison

CBD cordon change

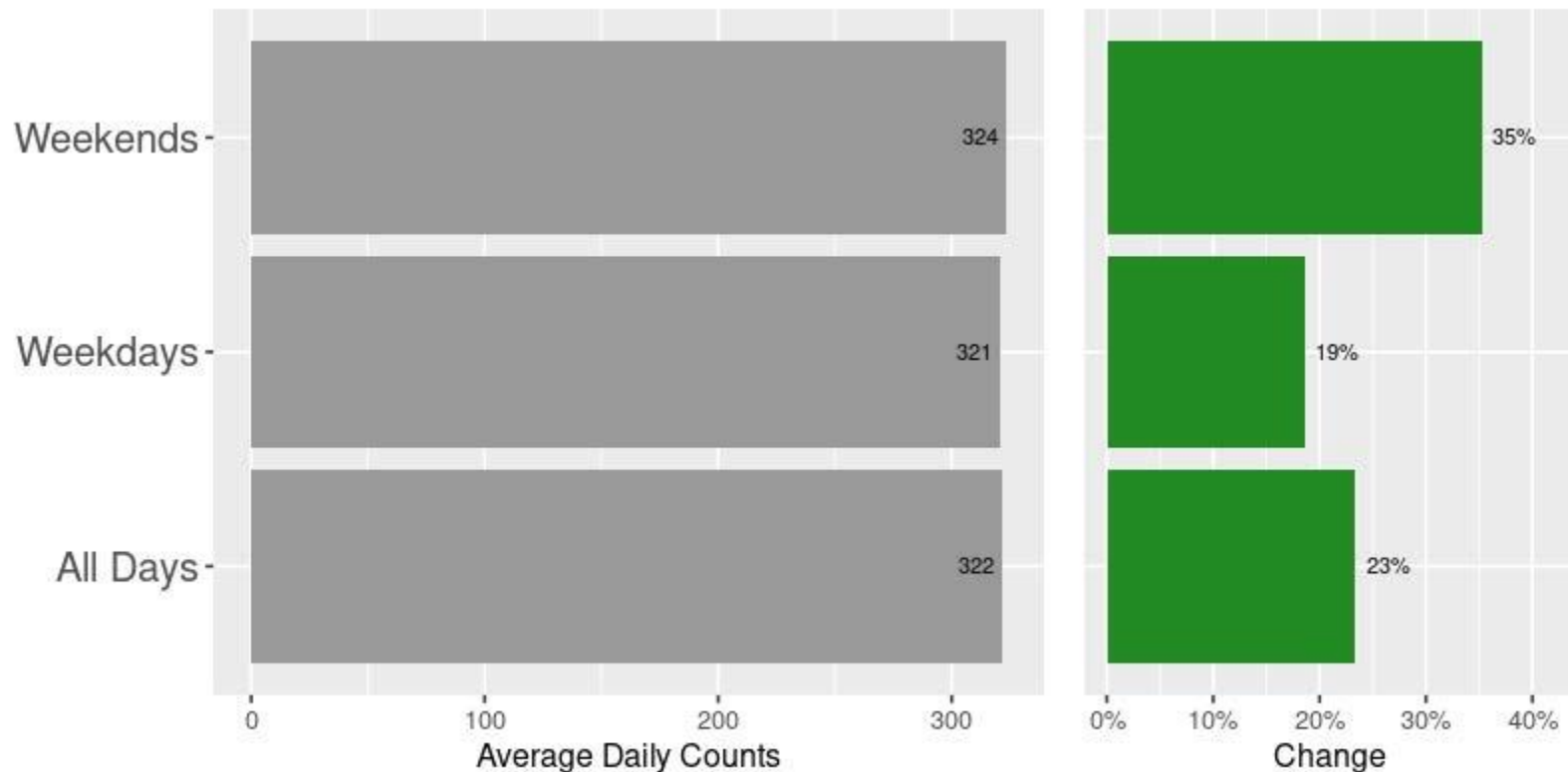
In line with the overall rates of network change, the CBD cordon counter sites experienced comparable gains across the board, especially over weekends



Note: To avoid misrepresentation, yearly figures are only reported for counter sites with at least 11 complete calendar months of data (N=8).

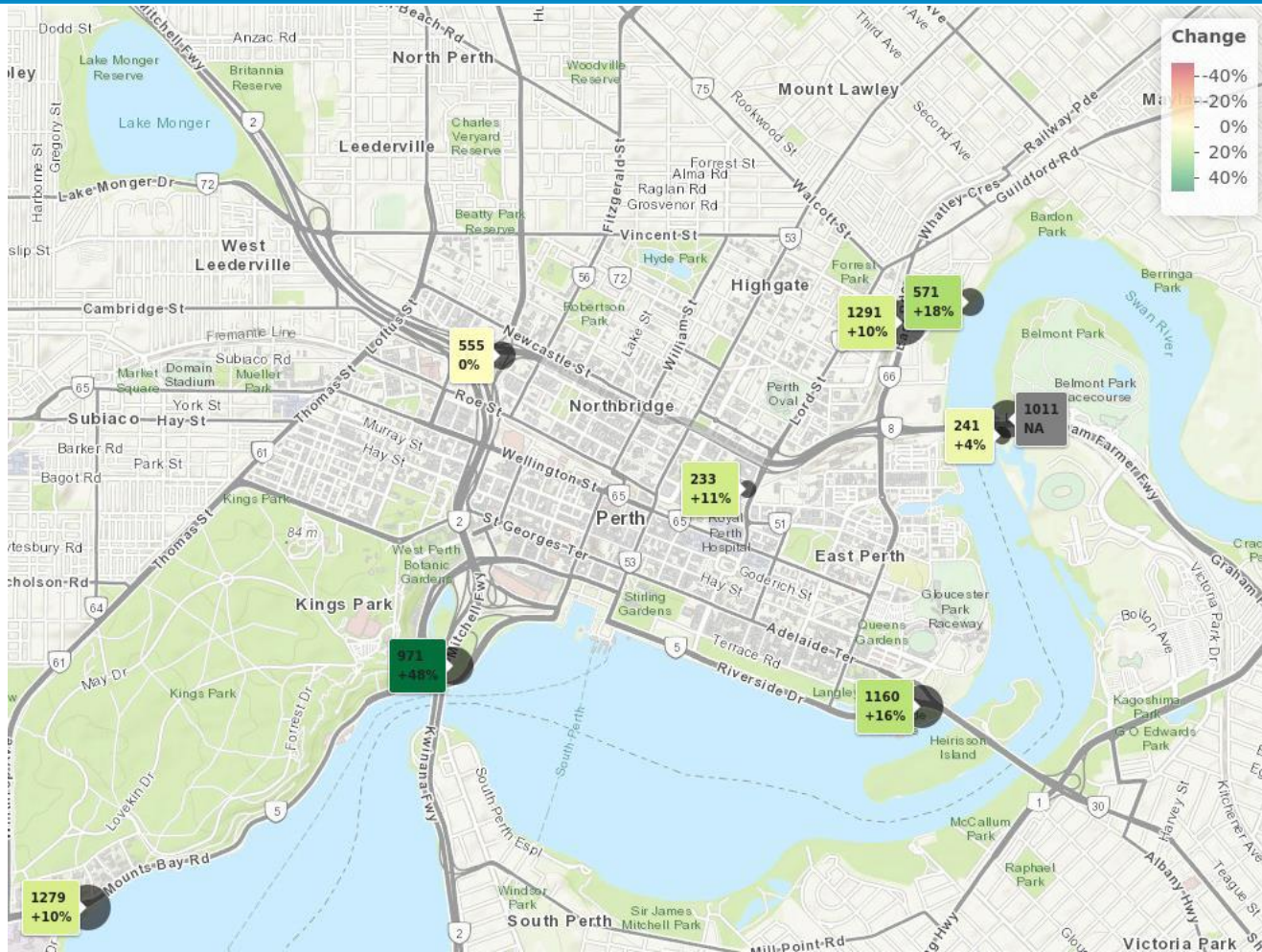
Regional WA change

Regional WA experienced even larger growth in % terms, again with the strongest gains over weekends



Note: To avoid misrepresentation, yearly figures are only reported for counter sites with at least 11 complete calendar months of data (N=6).

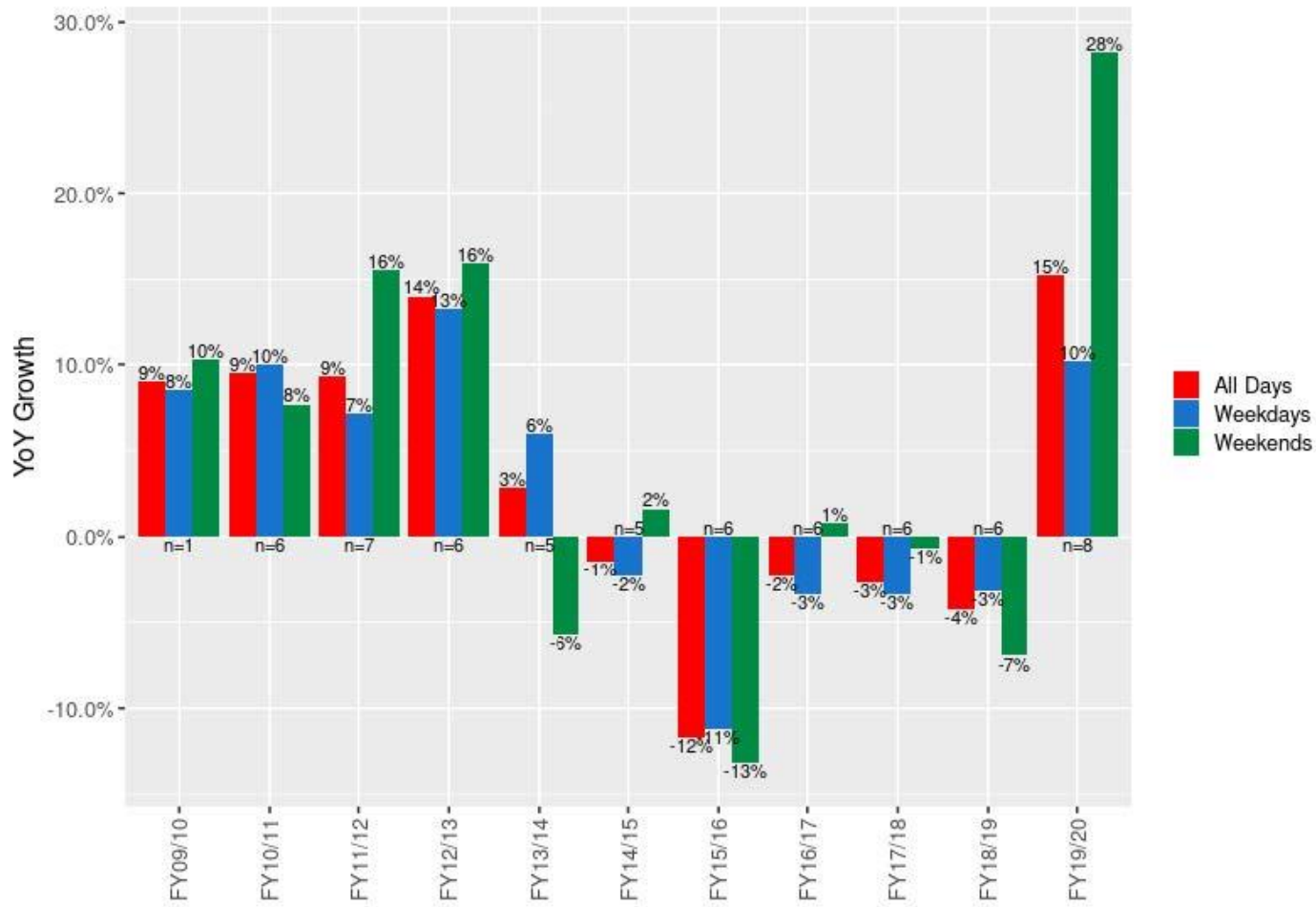
CBD cordon site change map



- Growth across all CBD cordon sites with enough data for comparison
- North Abutment of Narrows Bridge experienced the highest growth (+48%), possibly due to Kwinana Fwy works forcing some cyclists to switch from the west to the east side of the bridge

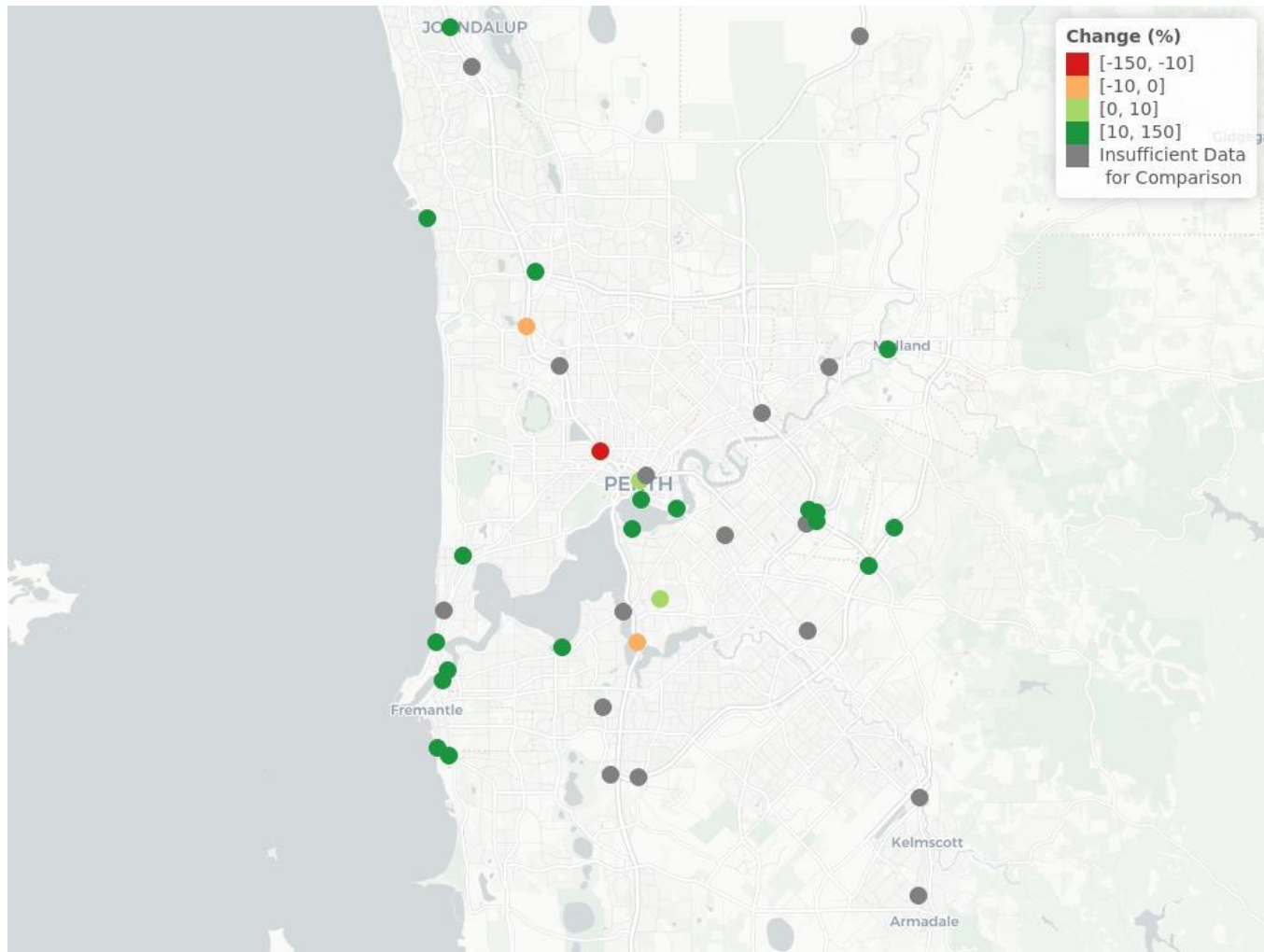
CBD cordon growth by year

CBD cordon counts show promising signs with a sharp reversal of recent negative trends.



Year on year growth calculated for sites with at least 11 complete calendar months of data. The number of sites in each comparison are indicated with "n".

Greater Perth sites change map



Note: CBD cordon and Mandurah counters are not plotted.
Likely that Kwinana and Mitchell Fwy works impacted on some counter sites.

Exploration of possible FY trends prior to COVID



Cycle counts were compared from July 18-Feb 19 vs July 19-Feb 20 only and calculated relative changes as a representation of trends prior to the impacts of COVID. Under this scenario, overall network change is +7.2%, with CBD cordon +10.1%

While this provides a potential indication of the trends which may have occurred without COVID, likely will take until FY 21-22 before the true impacts of COVID can be fully assessed.