



Government of Western Australia
Department of Transport

your move
more ways to get there

The Journey Report 2022

Your Move Schools outcomes report



Acknowledgment of Country

The Department of Transport acknowledges the Traditional Custodians of the land throughout Western Australia and pays our respects to Elders past and present.

We acknowledge the members of all Aboriginal communities, their cultures and continuing connection to Country throughout the State.

About this report

The information contained in this publication is provided in good faith and believed to be accurate at time of publication.

The State shall in no way be liable for any loss sustained or incurred by anyone relying on the information.

© Department of Transport 2023

Alternative formats

This publication is available in alternative formats upon request. Contact us to request a copy or submit an enquiry.

Contact

Department of Transport
140 William Street
Perth WA 6000
Telephone: (08) 6551 6000
Website: transport.wa.gov.au



Introducing the program

Your Move Schools is a free program delivered by the Department of Transport (DoT) that aims to increase walking, riding, scootering and public transport for the school trip, and reduce car trips.

The program is a whole school approach that enables school staff, parents and students to become active transport champions and advocate for travel behaviour change in their local community.

Your Move aims to improve the health and wellbeing of children and adults in Western Australian communities, and reduce traffic congestion and environmental impacts from car use. The DoT Behaviour Change team works with Your Move champions to tackle traffic issues and foster a positive active travel culture at schools.

Program objectives

The program seeks to **enable participating schools** to:

This will assist in achieving the following **outcomes**:

Increase active transport trips to school

Increase active transport trips for families

Reduce car trips to school

Help alleviate traffic congestion and decrease the demand for parking

Reduce greenhouse gas emissions from vehicle travel for school trips

Improve community connectedness through whole school community engagement



How the program works

The Your Move program helps develop and embed an active travel culture within the school community.

DoT supports participating schools primarily via the [Your Move website](#), where champions are encouraged to post stories on active travel events and activities run by the school's Your Move team.

Posting stories and submitting surveys earn the school points and annual accreditation. Points are linked to grant funding and can be redeemed for active travel rewards at the Your Move online reward shop.



Why we collect data

Collecting program data helps:

- » build a picture of program participation and engagement each year, and over time;
- » with program planning and informs our approach to supporting schools;
- » provide evidence to demonstrate program impact and support for Super Boost and Connecting Schools Grant funding; and
- » monitor and evaluate the program, guiding ongoing development and improved delivery.



What are we working towards

Your Move Schools aims to deliver an evidence based, innovative and best practice behaviour change program that increases walking, riding, scootering and public transport trips to school.

The program has several key performance indicators that are used to monitor and track progress.

1. Maintain schools registered in the program with an attrition rate of less than 10 per cent each year.
2. Increase the number of participating schools each year.
3. Increase the number of accredited schools (achieving bronze accreditation and above) each year.
4. Increase the number of highly engaged schools (achieving gold accreditation and above) each year.
5. Increased or sustained* active travel hands-up survey counts in Term 4 compared with the counts in Term 1.
6. Decreased or sustained* car trip counts in Term 4 compared with the counts from Term 1.

*The goal for each school may be different as this is dependent on the proportion of active transport trips, for example, where proportions are high, the goal would be to maintain this; where proportions are low, the goal would be to increase this.



“I like walking to school because I get to have fun with my friends.”- Student

“An active trip to school builds independence and healthy, resilient students.”- Teacher



Key program outcomes

Insights from 2022

This report provides valuable insight into Your Move Schools and provides an overview of participation and engagement with the program from data collected in 2022.

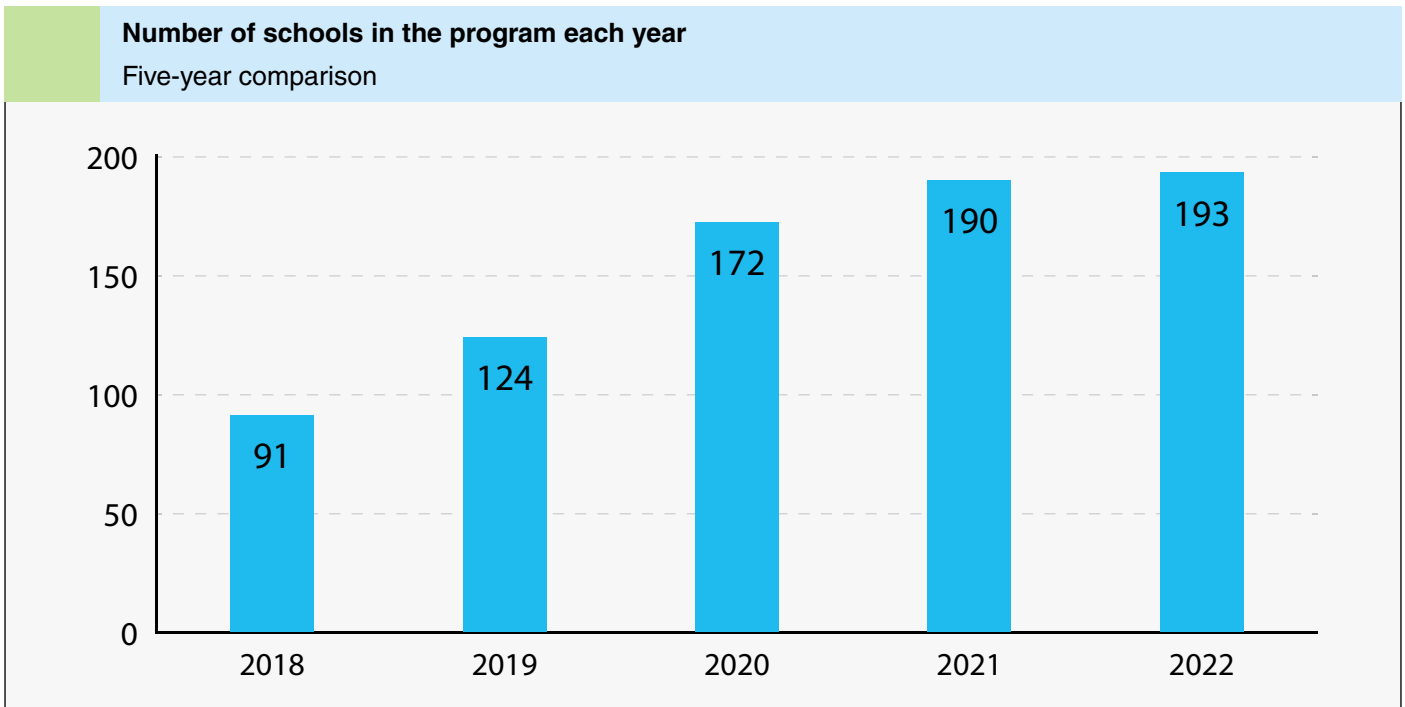
Setting the scene

The program has observed significant growth in schools registering with the program over the past five years and is expected to continue to grow. In 2022, the program maintained a similar number of registered schools (with two per cent growth) compared to 2021, and a total of 29 new schools signed up to the program.

The program has consistently grown since 2018, with a total of 193 schools registered in 2022.



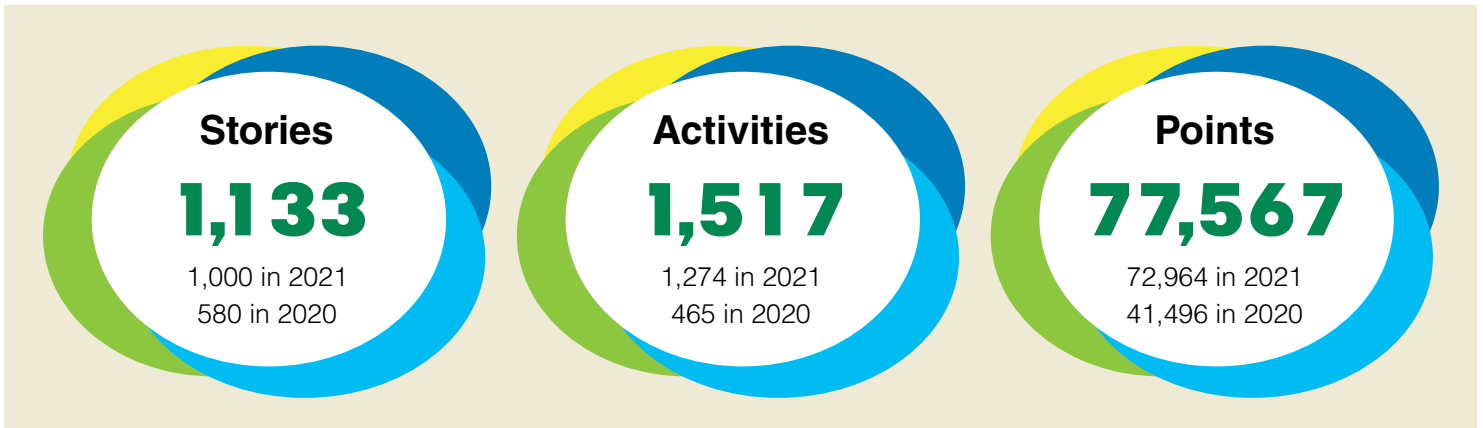
In 2018, a total of 91 schools registered, which has increased to 193 registered schools in 2022. The program has observed a **112 per cent increase** over this five-year period (2018 to 2022).



The data presented is based on the number of registered schools recorded each year. A registered school is one that has signed up to the Your Move School website.

School engagement with the Your Move Schools program continues to grow.

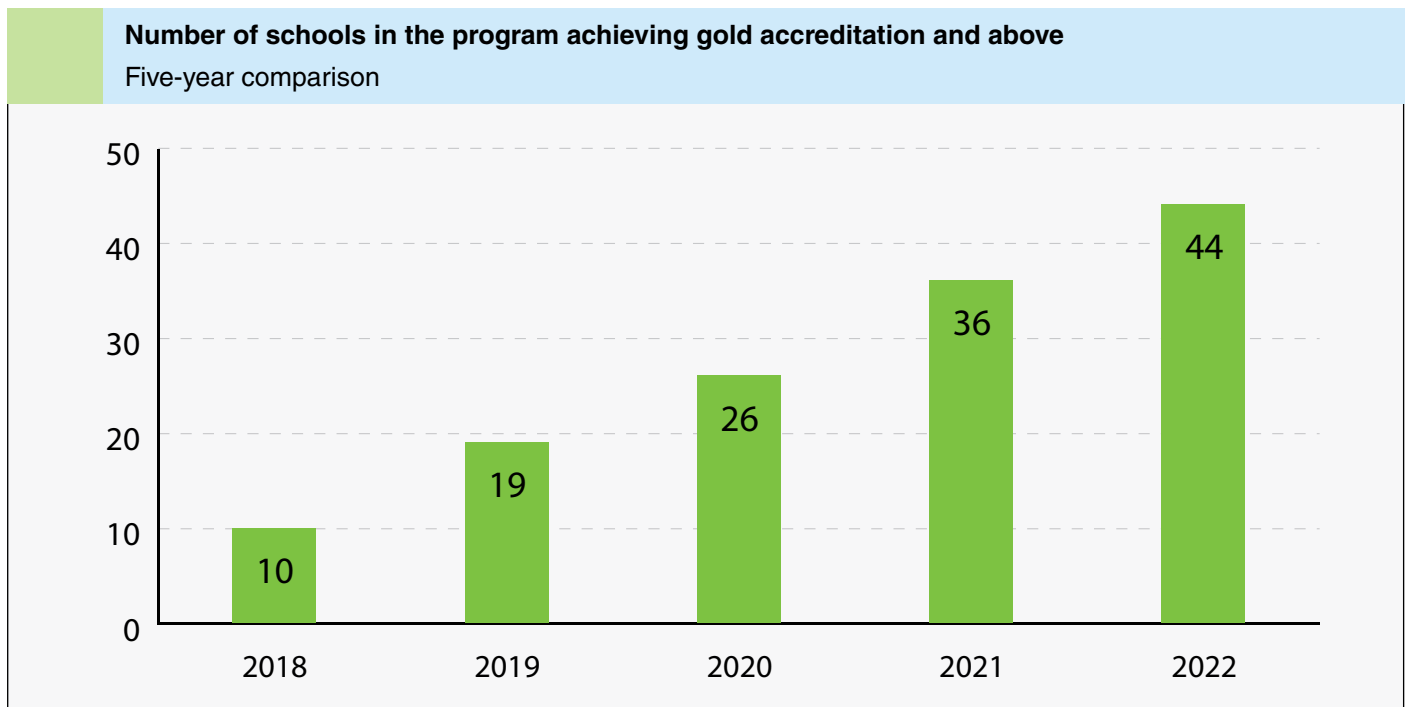
Schools are posting more stories on the program website, delivering a greater number of activities for their school community to get involved, and are earning more points each year.



The data presented is sourced from the Your Move Schools Program website content management system.

As points accumulate, schools achieve accreditation levels – these include bronze, silver, gold, platinum and double platinum. The number of schools achieving gold accreditation and above continues to grow each year.

This upward trend has been observed since 2018 and is currently at 44 schools in 2022 with gold accreditation and above, up from 36 schools in 2021 and 26 schools in 2020.



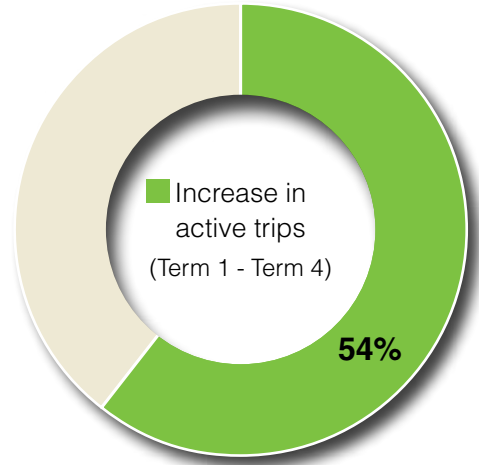
The data presented is based on the number of accredited schools who achieved gold accreditation and above. 2018 n=39, 2019 n=51, 2020 n=66, 2021 n=94, 2022 n=89.

In 2022, 54 per cent of schools recorded an increase in active transport trips, when comparing the trips in Term 1 to Term 4.

Active travel trips in Your Move schools are above the Perth average

According to preliminary data from the Perth Area Travel and Household Survey (PATHS), the rate of active travel to school across Perth is as low as 20 per cent¹. The level of active travel for all Your Move participating schools in 2022 is 42 per cent, which is twice the Perth metropolitan school average.

Proportion of schools with increase in active transport school trips in 2022



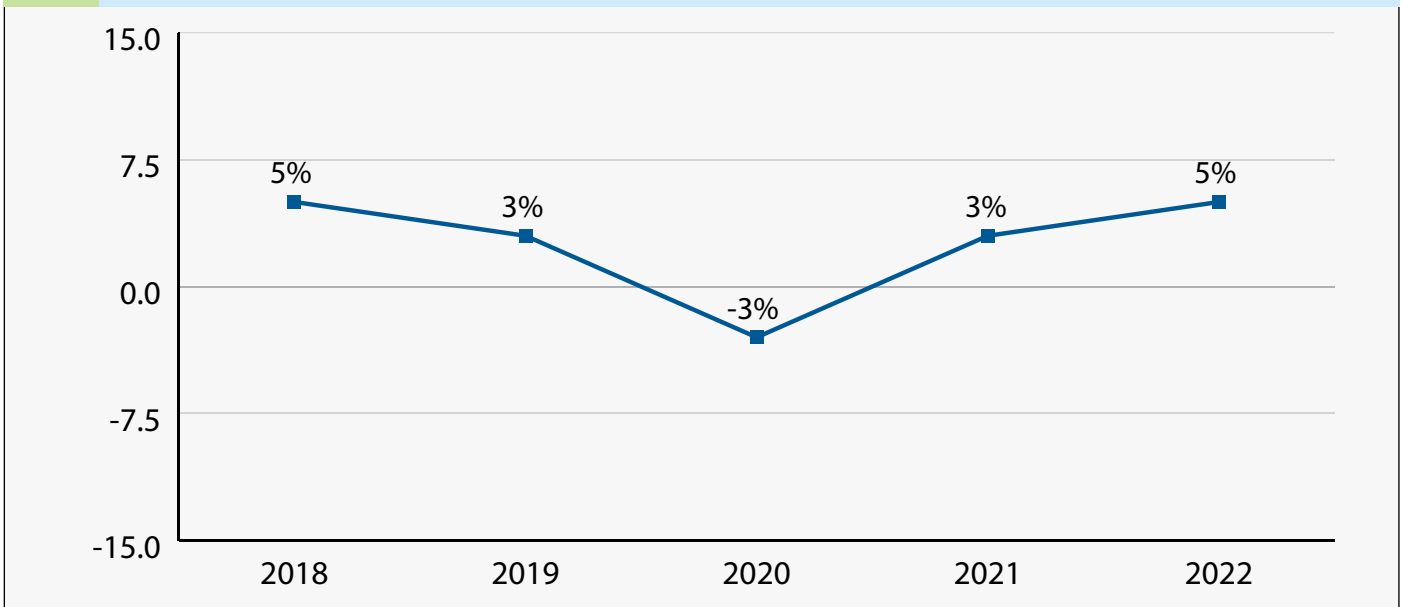
The data presented is based on schools who completed a hands-up survey in both Term 1 and Term 4 (n=72 schools).

The largest percentage increase* in active trips since 2018 was observed in 2022.

There was an increase in active trips of five per cent* in 2022, which is the largest increase since 2018. The dip in 2020 shows a decrease in active school trips during COVID-19.

Active transport trips: 2018 - 2022

Relative difference percentage



The data presented is based on schools who completed a hands-up survey in both Term 1 and Term 4 (n=72 schools).

¹ Based on preliminary available data from the Perth Area Travel and Household Survey (PATHS).

2022: Changes in trips by mode

Relative difference percentage

Active transport

5% increase

3% in 2021



17% increase

12% in 2021



14% increase

-18% in 2021



4% increase

5% in 2021



6% decrease

5% decrease in 2021

A five per cent increase* in active trips between Term 1 to Term 4 was observed in 2022.

Students increased bike riding, scootering or skating by 17 per cent, use of public transport by 14 per cent and walking by four per cent.

In 2021, use of public transport trips had declined, possibly due to the impact of COVID-19 and concerns with using public transport, however the 2022 data shows use of this mode has returned.

The most recent data indicated car use had decreased by six per cent.

The data presented is based on relative difference percentages, and sourced from the Analysis of Program Effects report (2021 – 2023) by Data Analysis Australia Pty Ltd.

*All percentages are based on relative different percentages. The relative percent difference is a measure of the change in a value relative to the average of that value. This provides the true scale of difference between the two scores.



Connecting Schools Grant funding in 2022 was awarded to 51 schools and used to improve bike access, skills and infrastructure.

The Connecting Schools Grant is an initiative of the WA State Government, led by DoT and jointly funded by the Department of Education. This available funding aims to improve a school's bike access, skills and infrastructure.

Funding available to schools has increased significantly over the past few years, and in 2022, 51 schools received Connecting Schools Grant funding with a total value of approximately \$225,000.

Table 1: Connecting Schools Grant funding

Year	Number of grants awarded	Total funding
2020	31	\$133,000
2021	49	\$219,000
2022	51	\$225,000

Further information

- » Please note, in some instances rounding has been included in the report, e.g. the Connecting Schools Grant funding values have been rounded for each year shown.
- » Active travel, when categorised for the hands-up survey analysis, includes riding (i.e. bike riding, scootering or skating), walking and public transport trips.
- » Hands-up surveys are surveys collected on a selected morning and asks how students travelled to school on that particular day (and exclude any event days).
- » The final hands-up survey analysis for 2022 is based on responses from approximately 25,000 students in both the before and after surveys.
- » The hands-up survey analysis provides a relative percent difference, which is a measure of the change in a value relative to the average of that value. This provides the true scale of difference between the two scores.
- » More information can be found on Active Transport's [Active travel to school](#) webpage on the DoT website, or on the [Your Move Schools website](#).

