



Logging on and off

When logging on with a radio station let them know who you are, where you are going, when you will arrive back and log off on your return.

Logging on procedure

This is an example of the radio call and the details the radio station will need to help find you in the event of an emergency:

Marine Rescue will reply: This is Marine Rescue [Station Name]
please go to channel xx OVER.

Marine Rescue will call you 3 times (vessel rego) and say OVER.

- vessel's name, registration number or call sign;
- departure time and location;
- destination;
- trip intentions;
- number of people on board;
- amount of fuel carried; and
- estimated time of return.

SAFETY EQUIPMENT REQUIREMENTS



 <p>Recreational Skipper's Ticket The Skipper of a recreational vessel, powered by a motor greater than 6 horsepower must hold an RST.</p>		✓	✓
 <p>Lifejacket Carriage A lifejacket, as indicated in the table opposite, must be carried for every person on board.</p>	<p>Vessels smaller than 4.8m</p> <p>Vessels 4.8m and larger</p>	<p>Minimum Level 100 MUST BE CARRIED</p> <p>Minimum Level 100 MUST BE CARRIED</p>	<p>Minimum Level 100 MUST BE WORN</p> <p>Minimum Level 100 MUST BE CARRIED</p>
	<p>Children older than one and younger than 12</p>	<p>Minimum Level 100 MUST BE CARRIED</p>	<p>Minimum Level 100 MUST BE WORN</p>
 <p>Lifejacket Wearing As indicated in the table opposite.</p>	<p>Personal Water Craft</p>	<p>Minimum Level 50S MUST BE WORN</p>	<p>Minimum Level 50S MUST BE WORN</p>
 <p>Distress Beacon (in-date) A GPS enabled 406 MHz EPIRB OR if worn by at least one person, a GPS enabled PLB. Distress beacons must be in-date and registered with AMSA.</p>		RECOMMENDED	✓
 <p>Red and Orange Flares (in-date) At least two hand held red flares and two hand held orange flares must be carried. OR Electronic Visual Distress Signals (EVS) An electronic signalling device may be carried in lieu of flares IF a GPS enabled EPIRB or PLB (must be worn) is also carried.</p>		RECOMMENDED	✓
 <p>Marine Radio A VHF or HF marine radio on any Registrable Vessel when operating more than 4 nautical miles from shore in unprotected waters.</p>		RECOMMENDED	<p>REQUIRED beyond 4 nautical miles</p> <p>RECOMMENDED within 4 nautical miles</p>
 <p>Recommended Additional Safety Equipment It is recommended an anchor and line, a fire extinguisher and a means of removing water be carried.</p>		RECOMMENDED	RECOMMENDED

17-09-03-01-0724

Contact details

Department of Transport

Email: Ed.Boat@transport.wa.gov.au
Website: www.transport.wa.gov.au/imarine
Albany Office: 9892 7333
Marine Safety Hotline: 13 11 56

Police

Emergency: 000
Albany Police: 131 444
Water Police: 9442 8600

Department of Fire and Emergency Services
Marine Rescue Western Australia
Emergency contact: VHF 16 - 82 - 81
Marine Rescue Albany

Boating Weather Forecasts

Boating weather: 1300 815 916
Website: www.bom.gov.au



Boating in WA just got smarter.
Download the free Deckee app.



anywhere, anytime!
Save time and go online today



Join us at
facebook.com/MarineSafetyWA

For further information go to
www.transport.wa.gov.au/boating
or scan the QR Code

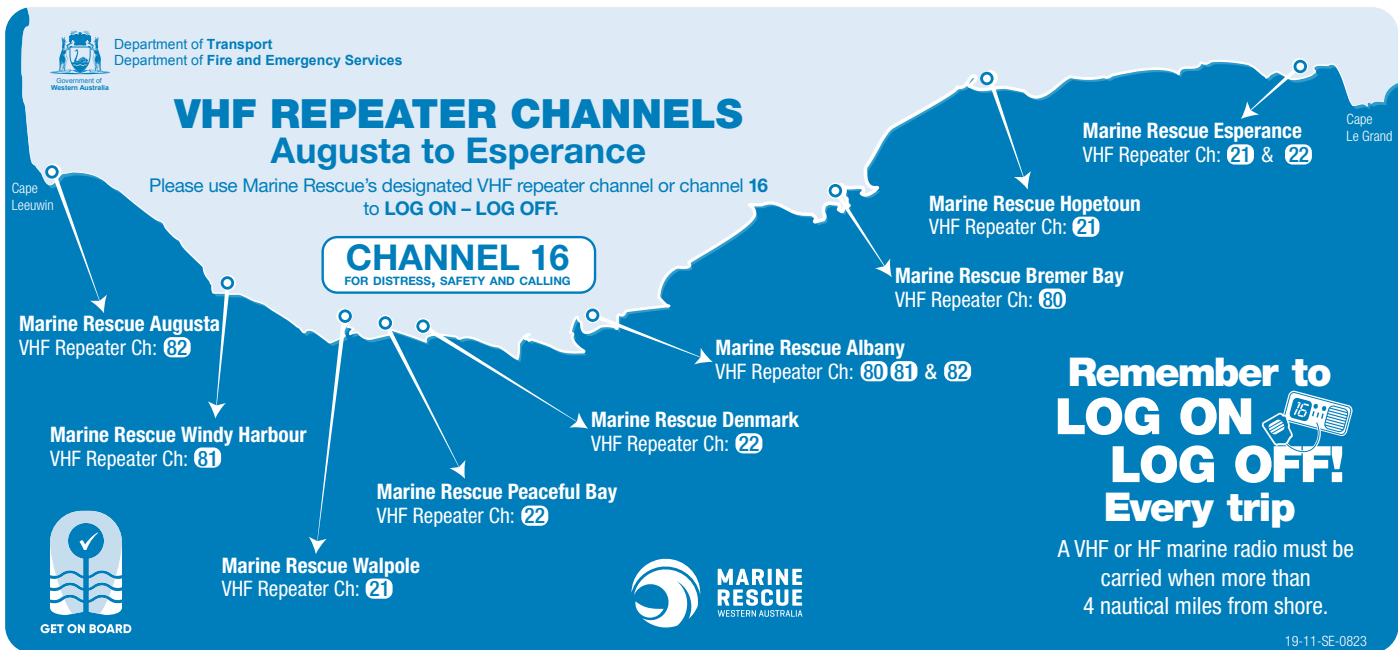
The information contained in this publication is provided in good faith and believed to be accurate at time of publication. The State shall in no way be liable for any loss sustained or incurred by anyone relying on the information.

16-01-02-SER-0523-WEB-S1



Monitored Radio Channels









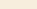
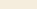


Marine Rescue Group	VHF & Repeater	HF
ACRM Capel	16 & 80/22	By Request
Albany	16 & 81/82	4125
Augusta	16 & 82	No
Bremer Bay	16 & 80	No
Bunbury	16	4125
Bussetton	16/74 & 80/22	No
Denmark	16 & 22	No
Esperance	16 & 21/22	2182/4125
Hopetoun	16 & 21	No
Mandurah	16/77 & 82	4125
Margaret River	16 & 80	No
Naturaliste	16/74 & 80/22	No
Peaceful Bay	16/77 & 22	No
Walpole	16 & 21	No
Windy Harbour	16 & 81	2182/4125

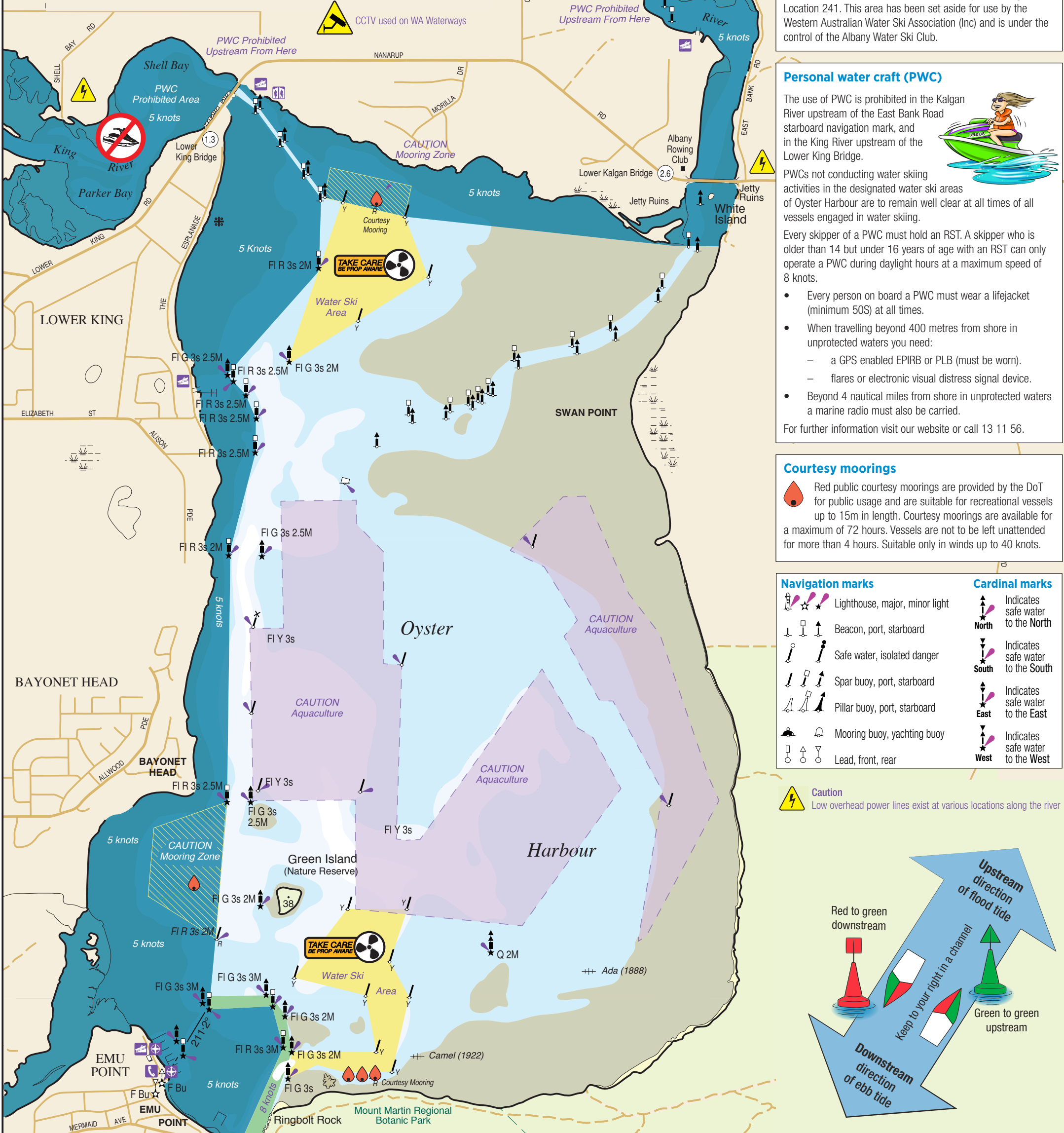
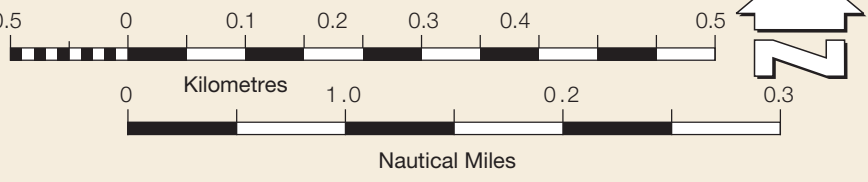


OYSTER HARBOUR

For recreational use only.

LEGEND

- | | | | |
|---|------------------------------|---|-----------------------------------|
|  | 5 Knot Speed Restricted Area |  | Closed Waters - All Vessels |
|  | 8 Knot Speed Restricted Area |  | Closed Waters - Motorised Vessels |
|  | Water Skiing Area |  | Aquaculture Lease Area |
|  | Non Public Water Skiing Area |  | Mooring Zone |
|  | GPS Validation Mark |  | Courtesy Mooring |
|  | Wreck |  | Rock awash |

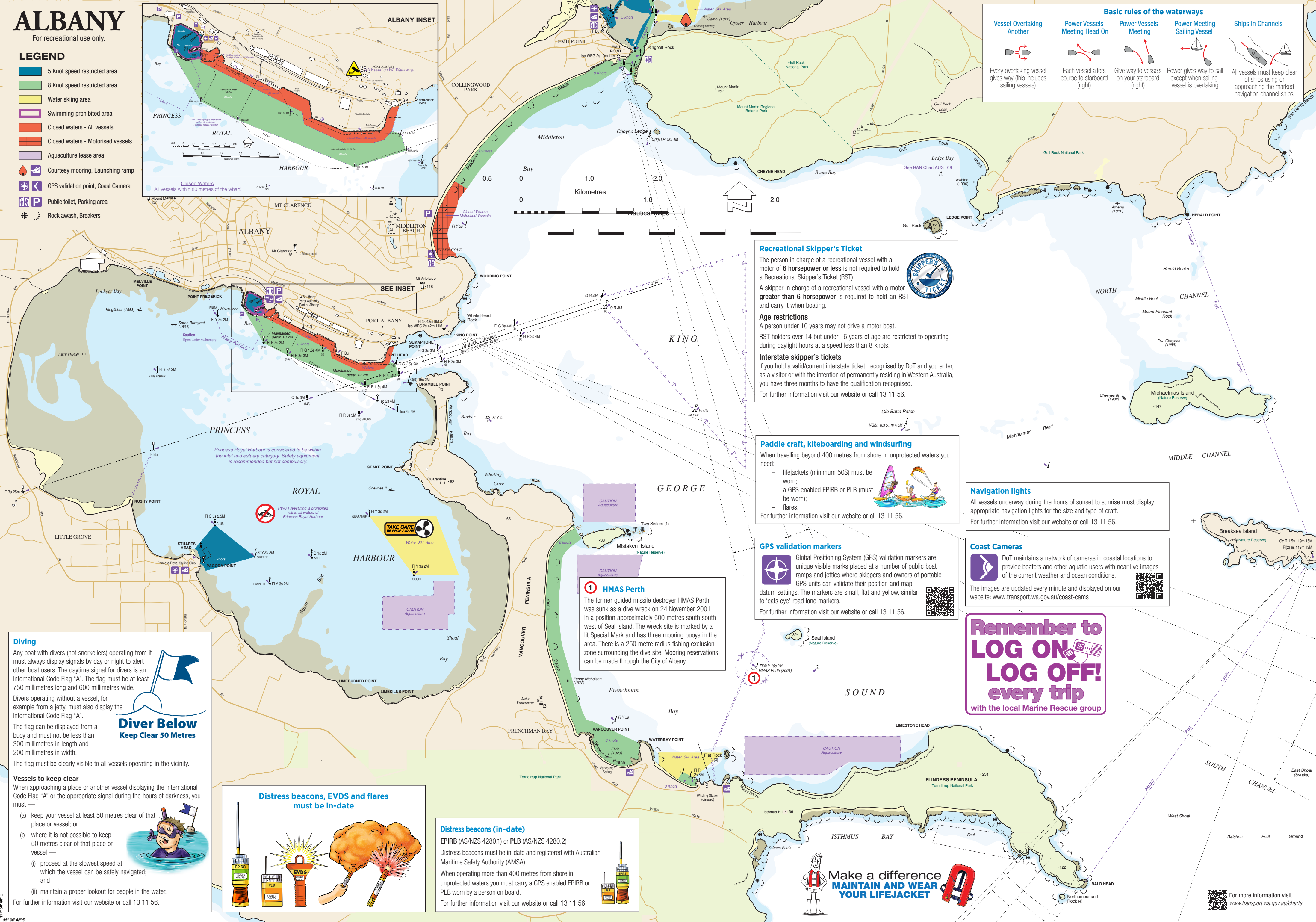
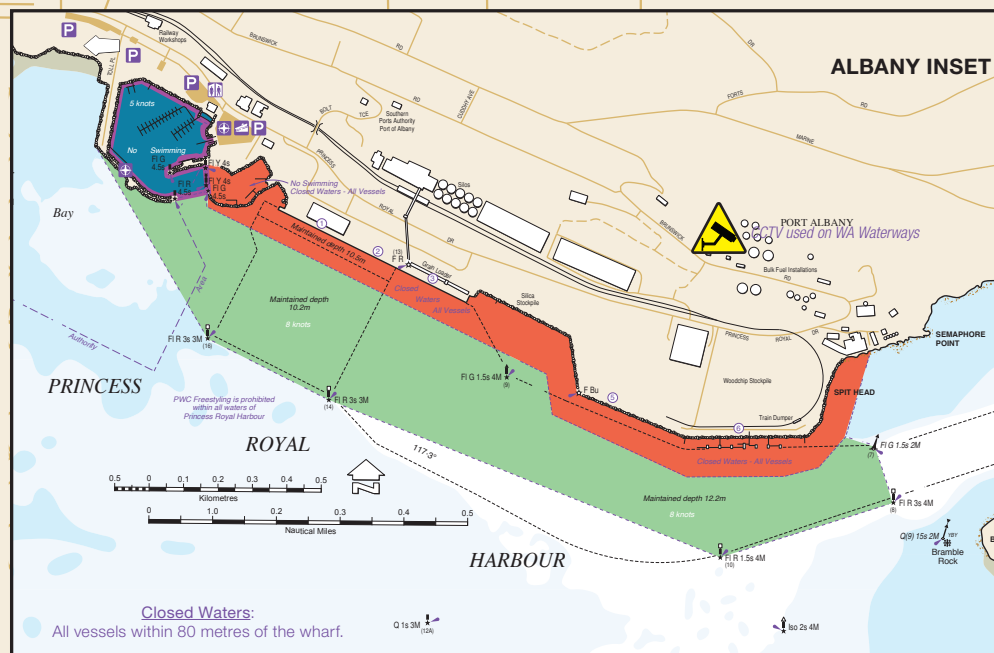


ALBANY

For recreational use only.

LEGEND

- 5 Knot speed restricted area
- 8 Knot speed restricted area
- Water skiing area
- Swimming prohibited area
- Closed waters - All vessels
- Closed waters - Motorised vessels
- Aquaculture lease area
- Courtesy mooring, Launching ramp
- GPS validation point, Coast Camera
- Public toilet, Parking area
- Rock awash, Breakers



Basic rules of the waterways

Vessel Overtaking Another	Power Vessels Meeting Head On	Power Vessels Meeting	Power Meeting Sailing Vessel	Ships in Channels
Every overtaking vessel gives way (this includes sailing vessels)	Each vessel alters course to starboard (right)	Give way to vessels on your starboard (right)	Power gives way to sail except when sailing vessel is overtaking	All vessels must keep clear of ships using or approaching the marked navigation channel ships.

Recreational Skipper's Ticket

The person in charge of a recreational vessel with a motor of **6 horsepower or less** is not required to hold a Recreational Skipper's Ticket (RST).

A skipper in charge of a recreational vessel with a motor **greater than 6 horsepower** is required to hold an RST and carry it when boating.

Age restrictions

A person under 10 years may not drive a motor boat.

RST holders over 14 but under 16 years of age are restricted to operating during daylight hours at a speed less than 8 knots.

Interstate skipper's tickets

If you hold a valid/current interstate ticket, recognised by DoT and you enter, as a visitor or with the intention of permanently residing in Western Australia, you have three months to have the qualification recognised.

For further information visit our website or call 13 11 56.

Paddle craft, kiteboarding and windsurfing

When travelling beyond 400 metres from shore in unprotected waters you need:

- lifejackets (minimum 50S) must be worn;
- a GPS enabled EPIRB or PLB (must be worn);
- flares.

For further information visit our website or call 13 11 56.

GPS validation markers

Global Positioning System (GPS) validation markers are unique visible marks placed at a number of public boat ramps and jetties where skippers and owners of portable GPS units can validate their position and map datum settings. The markers are small, flat and yellow, similar to 'cats eye' road lane markers.

For further information visit our website or call 13 11 56.

Navigation lights

All vessels underway during the hours of sunset to sunrise must display appropriate navigation lights for the size and type of craft.

For further information visit our website or call 13 11 56.

Coast Cameras

DoT maintains a network of cameras at coastal locations to provide boaters and other aquatic users with near live images of the current weather and ocean conditions.

The images are updated every minute and displayed on our website: www.transport.wa.gov.au/coast-cams

Remember to LOG ON, LOG OFF! every trip

with the local Marine Rescue group

Diving

Any boat with divers (not snorkellers) operating from it must always display signals by day or night to alert other boat users. The daytime signal for divers is an International Code Flag "A". The flag must be at least 750 millimetres long and 600 millimetres wide.

Divers operating without a vessel, for example from a jetty, must also display the International Code Flag "A".

The flag can be displayed from a buoy and must not be less than 300 millimetres in length and 200 millimetres in width.

The flag must be clearly visible to all vessels operating in the vicinity.

Diver Below

Keep Clear 50 Metres

Vessels to keep clear

When approaching a place or another vessel displaying the International Code Flag "A" or the appropriate signal during the hours of darkness, you must —

- keep your vessel at least 50 metres clear of that place or vessel; or
- where it is not possible to keep 50 metres clear of that place or vessel —
 - proceed at the slowest speed at which the vessel can be safely navigated; and
 - maintain a proper lookout for people in the water.

For further information visit our website or call 13 11 56.

Distress beacons, EVDS and flares must be in-date

Distress beacons (in-date)

EPIRB (AS/NZS 4280.1) or PLB (AS/NZS 4280.2)

Distress beacons must be in-date and registered with Australian Maritime Safety Authority (AMSA).

When operating more than 400 metres from shore in unprotected waters you must carry a GPS enabled EPIRB or PLB worn by a person on board.

For further information visit our website or call 13 11 56.

Make a difference

MAINTAIN AND WEAR YOUR LIFEJACKET

For more information visit www.transport.wa.gov.au/charts