

Boating Guide

Carnarvon Denham

Marine Safety



March 2025

Recreational Skipper's Ticket

The person in charge of a recreational vessel with a motor of 6 horsepower or less is not required to hold a Recreational Skippers Ticket (RST).

A skipper in charge of a recreational vessel with a motor greater than 6 horsepower is required to hold a RST and carry it when boating.

Age restrictions

A person under 10 years may not drive a motor boat.

RST holders over 14 but under 16 years of age are restricted to operating during daylight hours at a speed less than 8 knots.

Interstate skipper's tickets

If you hold a valid/current interstate ticket, recognised by DoT and you enter, as a visitor or with the intention of permanently residing in Western Australia, you have three months to have to have the qualification recognised.

Regardless from which state your boat is from you must hold a RST or equivalent to operate a vessel with a motor greater than 6 horsepower.

Medical fitness

Skippers are required to alert us if they develop a medical condition that affects their ability to safely operate a recreational vessel. More information can be found on our website under Recreational Skipper's Ticket.

For further information, please visit our website or call 13 11 56.

Diving

Any boat with divers (not snorkellers) operating from it must always display signals by day or night to alert other boat users. The daytime signal for divers is an International Code Flag "A". The flag must be at least 750 millimetres long and 600 millimetres wide.

Divers operating without a vessel, for example from a jetty, must also display the International Code Flag "A".

The flag can be displayed from a buoy and must not be less than 300 millimetres in length and 200 millimetres in width.

The flag must be clearly visible to all vessels operating in the vicinity.

Vessels to keep clear




When approaching a place or another vessel displaying the International Code Flag "A" or the appropriate signal during the hours of darkness, you must —

- keep your vessel at least 50 metres clear of that place or vessel; or
- where it is not possible to keep 50 metres clear of that place or vessel —
 - proceed at the slowest speed at which the vessel can be safely navigated; and
 - maintain a proper lookout for people in the water.



SAFETY EQUIPMENT REQUIREMENTS



		REGISTRABLE VESSELS Including sailing vessels that are or can be propelled by mechanical power.	
		PROTECTED WATERS Includes rivers, lakes, estuaries, harbours and waters within 400 metres from the shore in unprotected waters but excludes Cambridge Gulf and Lake Argyle.	UNPROTECTED WATERS Beyond 400 metres from the shore.
	Recreational Skipper's Ticket The skipper of a recreational vessel, powered by a motor greater than 6 horsepower must hold an RST.	✓	✓
	Lifejacket Carriage A lifejacket, as indicated in the table opposite, must be carried for every person on board.	Vessels smaller than 4.8m ✓ Minimum Level 100 MUST BE CARRIED	Vessels smaller than 4.8m ✓ Minimum Level 100 MUST BE WORN
		Vessels 4.8m and larger ✓ Minimum Level 100 MUST BE CARRIED	Vessels 4.8m and larger ✓ Minimum Level 100 MUST BE CARRIED
	Lifejacket Wearing As indicated in the table opposite.	Children older than one and younger than 12 ✓ Minimum Level 100 MUST BE CARRIED	Children older than one and younger than 12 ✓ Minimum Level 100 MUST BE WORN
		Personal Water Craft ✓ Minimum Level 50S MUST BE WORN	Personal Water Craft ✓ Minimum Level 50S MUST BE WORN
	Distress Beacon (in-date) A GPS enabled 406 MHz EPIRB OR if worn by at least one person, a GPS enabled PLB. Distress beacons must be in-date and registered with AMSA.	RECOMMENDED	✓
	Red and Orange Flares (in-date) At least two hand held red flares and two hand held orange flares must be carried. OR  Electronic Visual Distress Signal (EVDs) An electronic signalling device may be carried in lieu of flares IF a GPS enabled EPIRB or PLB (must be worn) is also carried.	RECOMMENDED	✓
	Marine Radio A VHF or HF marine radio on any Registrable Vessel when operating more than 4 nautical miles from shore in unprotected waters.	RECOMMENDED	REQUIRED beyond 4 nautical miles RECOMMENDED within 4 nautical miles
	Recommended Additional Safety Equipment It is recommended an anchor and line, a fire extinguisher and a means of removing water be carried.	RECOMMENDED	RECOMMENDED

SERPM-DLM/524-1

Contact details

Department of Transport

Email: Ed.Boat@transport.wa.gov.au
Website: transport.wa.gov.au/marine
Carnarvon: 9941 6800
Marine Safety Hotline: 13 11 56

Police

Emergency: 000
Carnarvon: 9941 7333
Denham: 9948 1201
Water Police: 9442 8600

Department of Fire and Emergency Services

Marine Rescue Western Australia
Emergency contact: VHF 16
Marine Rescue Carnarvon
Marine Rescue Shark Bay

Boating Weather Forecasts

Boating weather: 1300 815 916
Website: bom.gov.au

Department of Primary Industry and Regional Development

Fishwatch: 1800 815 507
Website: dpird.wa.gov.au

Department of Biodiversity, Conservation and Attractions

Website: dbca.wa.gov.au



Boating in WA just got smarter.
Download the free Deckee app.



anywhere, anytime!
Save time and go online today

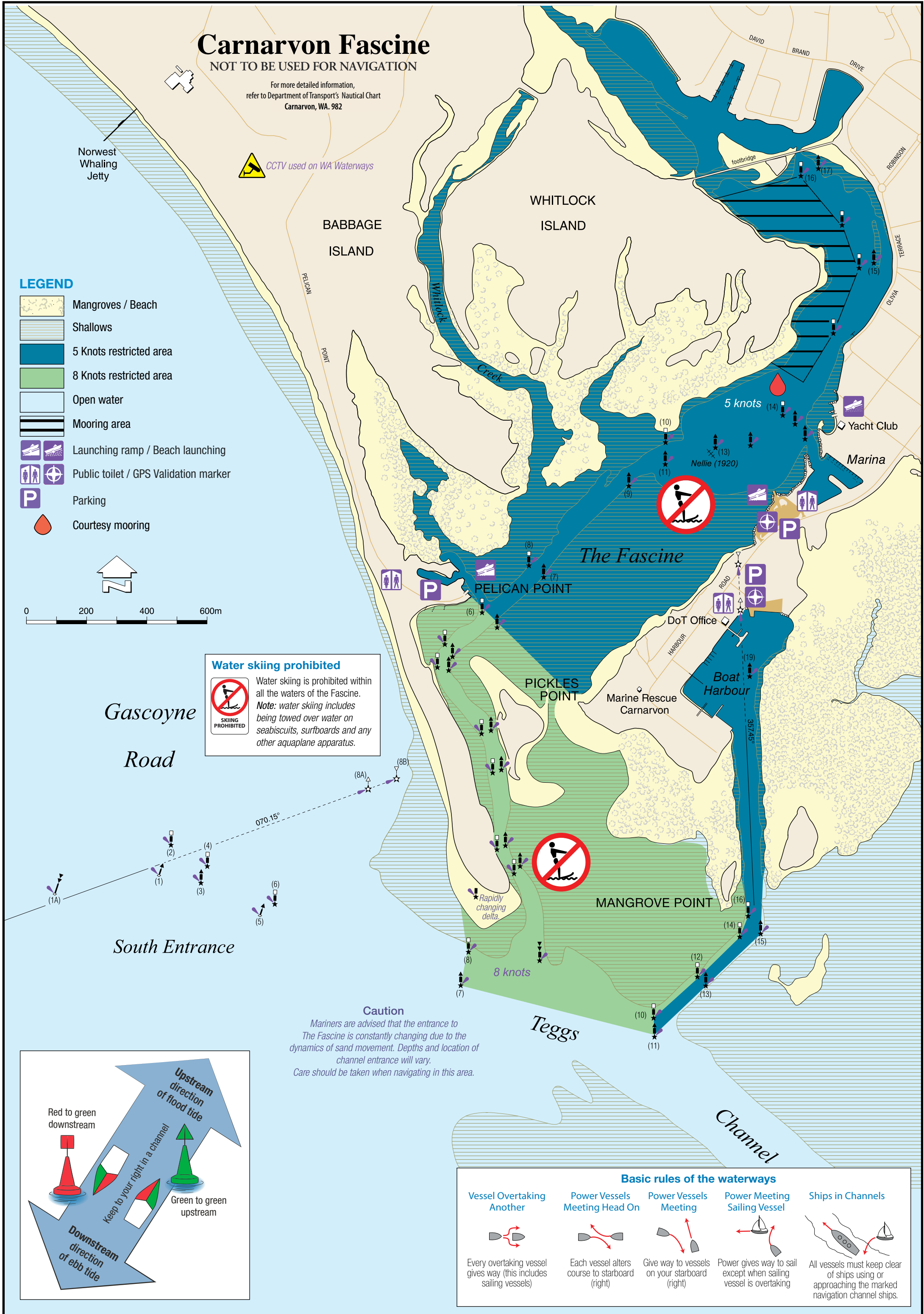


Join us at
facebook.com/MarineSafetyWA



For further information go to
transport.wa.gov.au/boatingguides
or scan the QR code

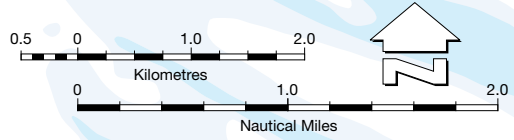
The information contained in this publication is provided in good faith and believed to be accurate at time of publication. The State shall in no way be liable for any loss sustained or incurred by anyone relying on the information. 16-05-02-SER-0325-WEB



SHARK BAY

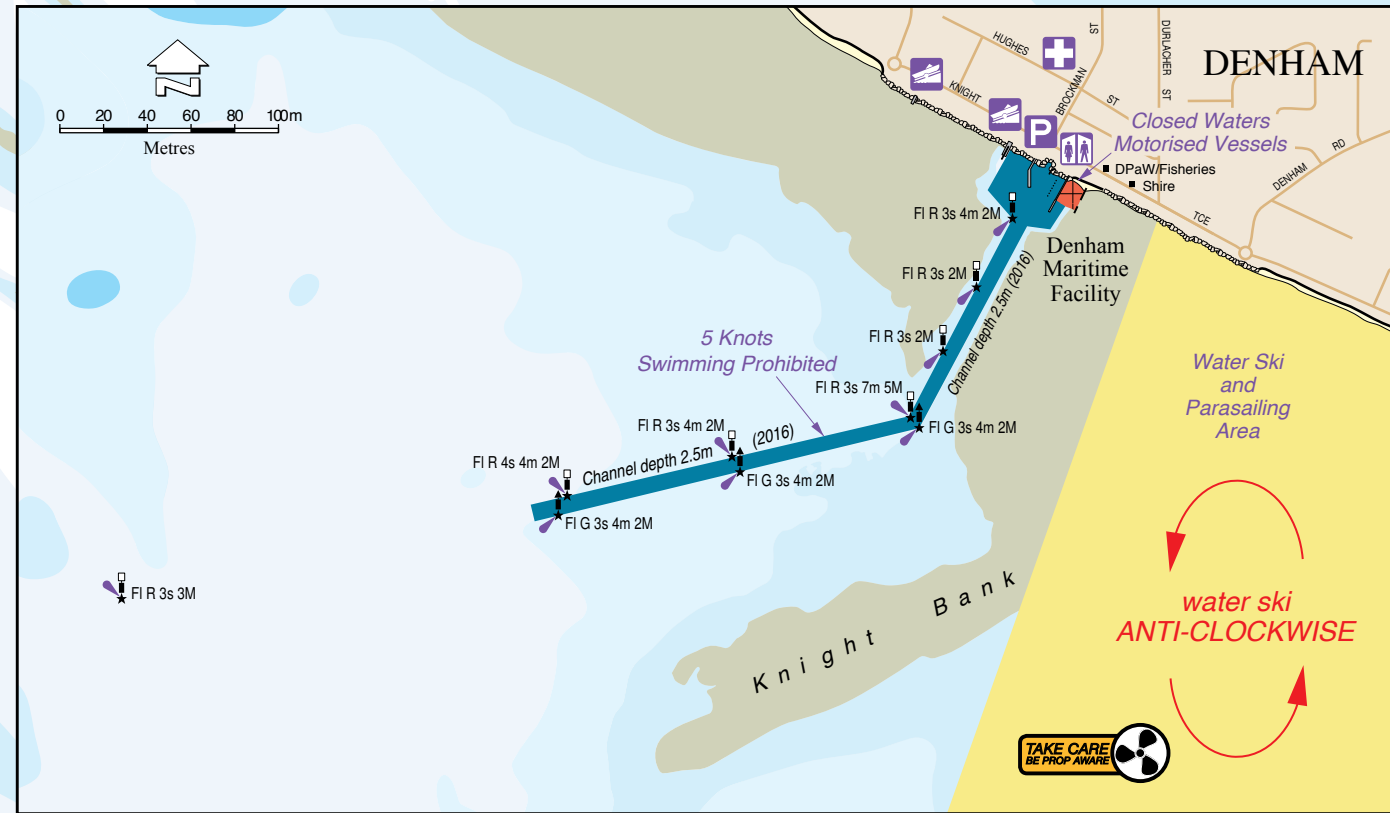
NOT TO BE USED FOR NAVIGATION

For more detailed informatio, refer to Nautical Charts
Bellefin Flats to Denham WA661



LEGEND

- 5 Knot Speed Limit
- Closed Waters – Motorised Vessels
- Water Ski Area
- Swimming Prohibited
- Parking / Launching Ramp
- Public Toilet / GPS Validation Marker



Water skiing

Water skiing involves being towed over water at a speed of 8 knots or more by a motor boat.

It takes at least three people to go water skiing:

1. A driver of at least 17 years of age with a Recreational Skipper's Ticket.
2. An observer of at least 14 years of age.
3. A person being towed.

Vessels taking off with skiers always give way to vessels landing a skier.

Beach take-off and landings are only permitted in the designated take-off and landing areas.

Lifejacket - Skippers must CARRY a lifejacket (Level 100) for everyone on board when they are on any WA waterway.

Skiing is only permitted between the hours of sunrise to sunset, unless otherwise indicated.

For further information, please visit our website or call 13 11 56.

Distress beacons (in-date)

EPIRB (AS/NZS 4280.1) **or** **PLB** (AS/NZS 4280.2)

Distress beacons must be in-date and registered with Australian Maritime Safety Authority (AMSA).

When operating more than 400 metres from shore in unprotected waters you must carry a GPS enabled EPIRB **or** PLB worn by a person on board.

For further information, please visit our website or call 13 11 56.

Cardinal marks

Used to indicate that deeper water lies in a compass direction away from a danger area such as a reef, shallow areas, etc.

North Cardinal
Light: White light, continuous flashing
Pass to North

West Cardinal
Light: White light, 9 flashes
Pass to West

East Cardinal
Light: White light, 3 flashes
Pass to East

South Cardinal
Light: White light, 6 flashes + 1 long flash
Pass to South

WARNING - Tropical cyclone region

The north west of Western Australia experiences more severe cyclones than any other part of the Australian coastline and is one of the most cyclone-prone coasts anywhere in the world. The cyclone season extends from November through to April, but most coastal impacts occur in the period from January to March.

Please refer to the Carnarvon/shark bay Cyclone Contingency Plan that DoT activates during cyclones which is available along with a range of other DoT cyclone plans on the web site:
www.transport.wa.gov.au/marine

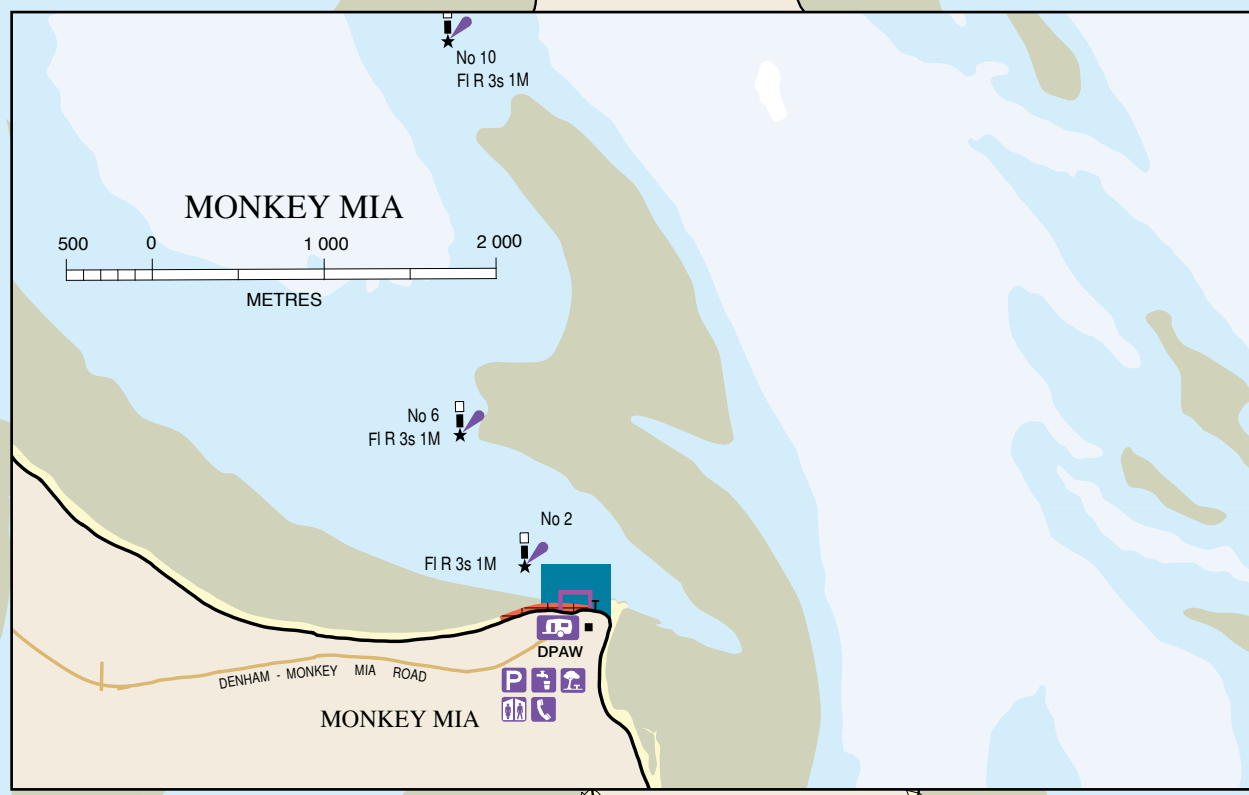
Navigation marks

- Lighthouse, major, minor light
- Beacon, port, starboard
- Safe water, isolated danger
- Spar buoy, port, starboard
- Pillar buoy, port, starboard
- Mooring buoy, yachting buoy
- Lead, front, rear

Cardinal marks

- Indicates safe water to the North
- Indicates safe water to the South
- Indicates safe water to the East
- Indicates safe water to the West

Distress beacons, EVDS and flares must be in-date



Make a difference
MAINTAIN AND WEAR YOUR LIFEJACKET

Remember to LOG ON LOG OFF! every trip
with the local Marine Rescue group

Basic rules of the waterways

- Vessel Overtaking Another**: Every overtaking vessel gives way (this includes sailing vessels)
- Power Vessels Meeting Head On**: Each vessel alters course to starboard (right)
- Power Vessels Meeting**: Give way to vessels on your starboard (right)
- Power Meeting Sailing Vessel**: Power gives way to sail except when sailing vessel is overtaking
- Ships in Channels**: All vessels must keep clear of ships using or approaching the marked navigation channel ships.