

# Boating Guide








## Esperance

### Marine Safety



August 2023-R1

## SAFETY EQUIPMENT REQUIREMENTS

		REGISTRABLE VESSELS Including sailing vessels that are or can be propelled by mechanical power.	
		PROTECTED WATERS Includes rivers, lakes, estuaries, harbours and waters within 400 metres from the shore in unprotected waters but excludes Cambridge Gulf and Lake Argyle.	UNPROTECTED WATERS Beyond 400 metres from the shore.
	<b>Recreational Skipper's Ticket</b> The skipper of a recreational vessel, powered by a motor greater than 6 horsepower must hold an RST.	✓	✓
	<b>Lifejacket Carriage</b> A lifejacket, as indicated in the table opposite, must be carried for every person on board.	✓ Minimum Level 100 <b>MUST BE CARRIED</b>	✓ Minimum Level 100 <b>MUST BE WORN</b>
		Vessels smaller than 4.8m  Vessels 4.8m and larger	✓ Minimum Level 100 <b>MUST BE CARRIED</b>
	<b>Lifejacket Wearing</b> As indicated in the table opposite.	✓ Minimum Level 100 <b>MUST BE CARRIED</b>	✓ Minimum Level 100 <b>MUST BE WORN</b>
		Children older than one and younger than 12	✓ Minimum Level 100 <b>MUST BE WORN</b>
	Personal Water Craft	✓ Minimum Level 50S <b>MUST BE WORN</b>	✓ Minimum Level 50S <b>MUST BE WORN</b>
	<b>Distress Beacon (in-date)</b> A GPS enabled 406 MHz EPIRB <b>OR</b> if worn by at least one person, a GPS enabled PLB. Distress beacons must be in-date and registered with AMSA.	<b>RECOMMENDED</b>	✓
	<b>Red and Orange Flares (in-date)</b> At least two hand held red flares and two hand held orange flares must be carried. <b>OR</b> <b>Electronic Visual Distress Signal</b> An electronic signalling device may be carried in lieu of flares IF a GPS enabled EPIRB or PLB (must be worn) is also carried.	<b>RECOMMENDED</b>	✓
	<b>Marine Radio</b> A HF or VHF marine radio on any Registrable Vessel when operating <b>more than 4 nautical miles</b> from shore in unprotected waters.	<b>RECOMMENDED</b>	<b>REQUIRED</b> beyond 4 nautical miles <b>RECOMMENDED</b> within 4 nautical miles
	<b>Recommended Additional Safety Equipment</b> It is recommended an anchor and line, a fire extinguisher and a means of removing water be carried.	<b>RECOMMENDED</b>	<b>RECOMMENDED</b>

### Contact details

#### Department of Transport

Email: [Ed.Boat@transport.wa.gov.au](mailto:Ed.Boat@transport.wa.gov.au)  
Website: [www.transport.wa.gov.au/marine](http://www.transport.wa.gov.au/marine)  
Esperance Office: 9216 8999  
Marine Safety Hotline: 13 11 56

#### Police

Emergency: 000  
Water Police: 9442 8600  
Esperance Police: 9079 8999

#### Department of Fire and Emergency Services

Marine Rescue Western Australia  
Emergency contact: VHF 16  
Marine Rescue Esperance  
Marine Rescue Hopetoun

#### Boating Weather Forecasts

Boating weather: 1300 815 916  
Website: [www.bom.gov.au](http://www.bom.gov.au)

#### Department of Primary Industry and Regional Development

Fishwatch: 1800 815 507  
Website: [www.dpird.wa.gov.au](http://www.dpird.wa.gov.au)


#### Department of Biodiversity, Conservation and Attractions

Website: [www.dbca.wa.gov.au](http://www.dbca.wa.gov.au)

 **Boating in WA just got smarter.**  
Download the free Deckee app.

 **anywhere, anytime!**  
Save time and go online today

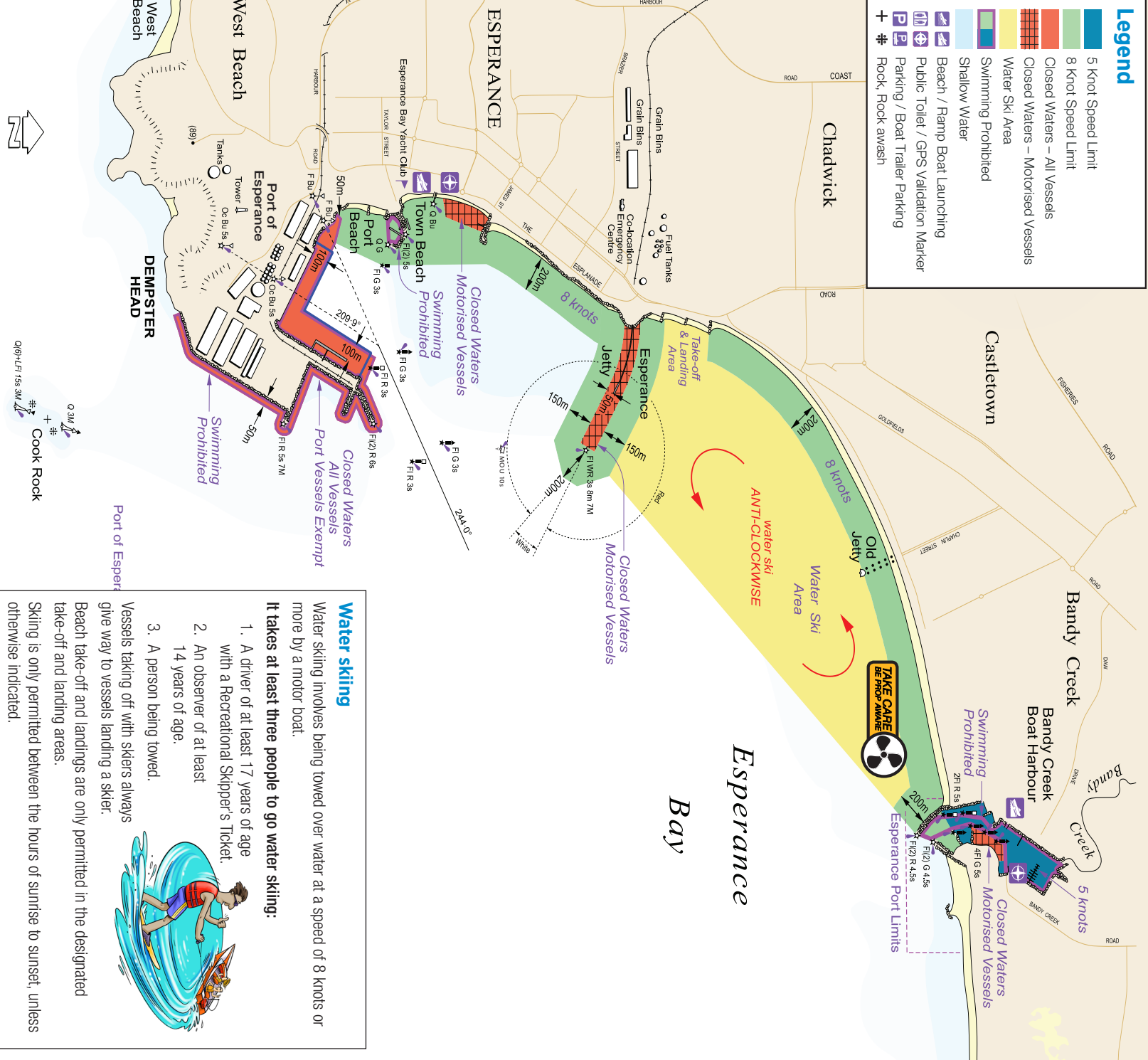
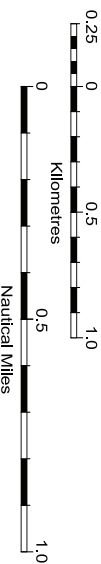
 Join us at  
[facebook.com/MarineSafetyWA](https://facebook.com/MarineSafetyWA)

 For further information go to  
[www.transport.wa.gov.au/boatingguides](http://www.transport.wa.gov.au/boatingguides)  
or scan the QR Code

The information contained in this publication is provided in good faith and believed to be accurate at time of publication. The State shall in no way be liable for any loss sustained or incurred by anyone relying on the information. 16-09-02-SER-0523-WEB-S1



**Port security and waterside access restrictions**  
No vessel (including recreational craft) is to approach within 50 metres of any port structure (wharf) or commercial vessel (whether underway, at anchor or alongside) without prior permission from the Harbourmaster.  
No vessel is to make fast to any port structure (including wharfs and beacons). This restriction applies whether there is a vessel alongside or if the berth is empty.



### Water skiing

Water skiing involves being towed over water at a speed of 8 knots or more by a motor boat.  
**It takes at least three people to go water skiing:**

1. A driver of at least 17 years of age with a Recreational Skipper's Ticket.
2. An observer of at least 14 years of age.
3. A person being towed.

Vessels taking off with skiers always give way to vessels landing a skier.  
Beach take-off and landings are only permitted in the designated take-off and landing areas.  
Skiing is only permitted between the hours of sunrise to sunset, unless otherwise indicated.  
For further information visit our website or call 13 11 56.

### Navigation marks

Light house, major, minor light  
Beacon, port, starboard  
Safe water, isolated danger  
Spar buoy, port, starboard  
Pillar buoy, port, starboard  
Mooring buoy, yachting buoy  
Lead front, rear

### Cardinal marks

Indicates safe water to the North  
Indicates safe water to the South  
Indicates safe water to the East  
Indicates safe water to the West

### Recreational Skipper's Ticket

The person in charge of a recreational vessel with a motor of 6 horsepower or less is not required to hold a Recreational Skipper's Ticket (RST).

A skipper in charge of a recreational vessel with a motor greater than 6 horsepower is required to hold an RST and carry it when boating.

#### Age restrictions

A person under 10 years may not drive a motor boat.

RST holders over 14 but under 16 years of age are restricted to operating during daylight hours at a speed less than 8 knots.

#### Interstate skipper's tickets

If you hold a valid/current interstate ticket, recognised by DoT and you enter, as a visitor or with the intention of permanently residing in Western Australia, you have three months to have the qualification recognised.

For further information visit our website or call 13 11 56.

#### Personal water craft (PWC)

Every skipper of a PWC must hold an RST. A skipper who is older than 14 but under 16 years of age with an RST can only operate a PWC during daylight hours at a maximum speed of 8 knots.

- Every person on board a PWC must wear a lifejacket (minimum 50S) at all times.
- When travelling beyond 400 metres from shore in unprotected waters you need:
  - a GPS enabled EPIRB or PLB (must be worn).
  - flares or electronic visual distress signal device.
- Beyond 4 nautical miles from shore in unprotected waters a marine radio must also be carried.

For further information visit our website or call 13 11 56.

#### Obstruction of channels and leading lines

Cray pots, lines and floats, drop nets, fishing nets, marker buoys or other buoyed objects can not be placed or allowed to remain in any channel or fairway in any port or harbour, or in any channel, fairway or passage in any navigable waters except by permission of DoT.

You also can't anchor or moor a vessel in any channel or fairway, unless the vessel is in distress.



### Kite boarding and windsurfing

In certain conditions these small, fast moving sailing craft may be difficult to see and skippers need to maintain a proper lookout at all times and take appropriate action to avoid collisions.

All windsurfers and kite boarders have a duty of care to ensure their activities are conducted with regard to the prevailing conditions and circumstances and take appropriate action to avoid collisions.

When travelling beyond 400 metres from shore in unprotected waters you need:

- lifejackets (minimum 50S) (must be worn);
- a GPS enabled EPIRB or PLB (must be worn).
- flares.

For further information visit our website or call 13 11 56

#### Paddle craft

Recreational canoes, kayaks, surf skis, wave skis, inflatables or similar paddle craft that are propelled by a person using a paddle must comply with WA marine laws.

When travelling beyond 400 metres from shore in unprotected waters you need:

- lifejackets (minimum 50S) (must be worn);
- a GPS enabled EPIRB or PLB (must be worn).
- flares.

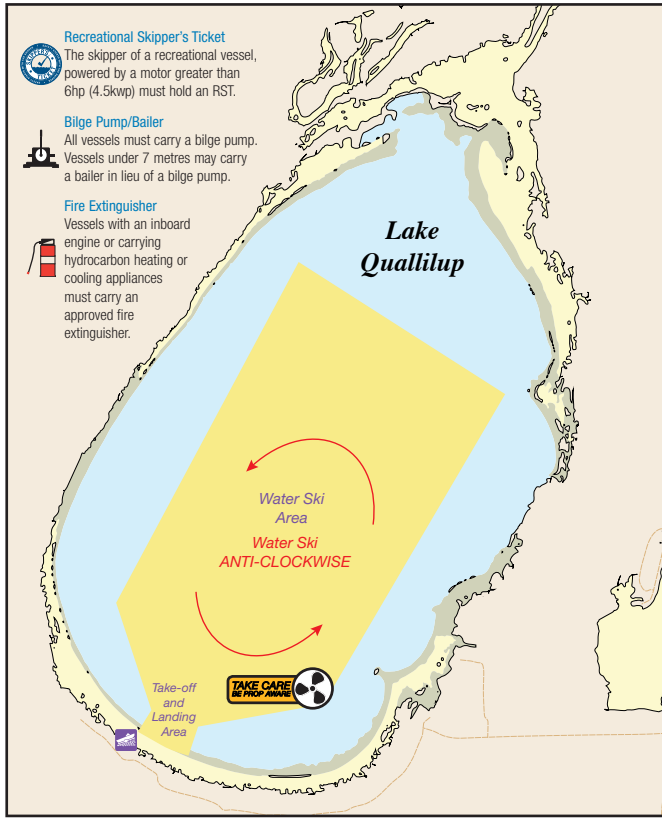
For further information visit our website or call 13 11 56.

#### General speed restrictions

It is illegal, in any navigable waters, to drive a motor boat at a speed exceeding eight knots, water ski or para-sail:

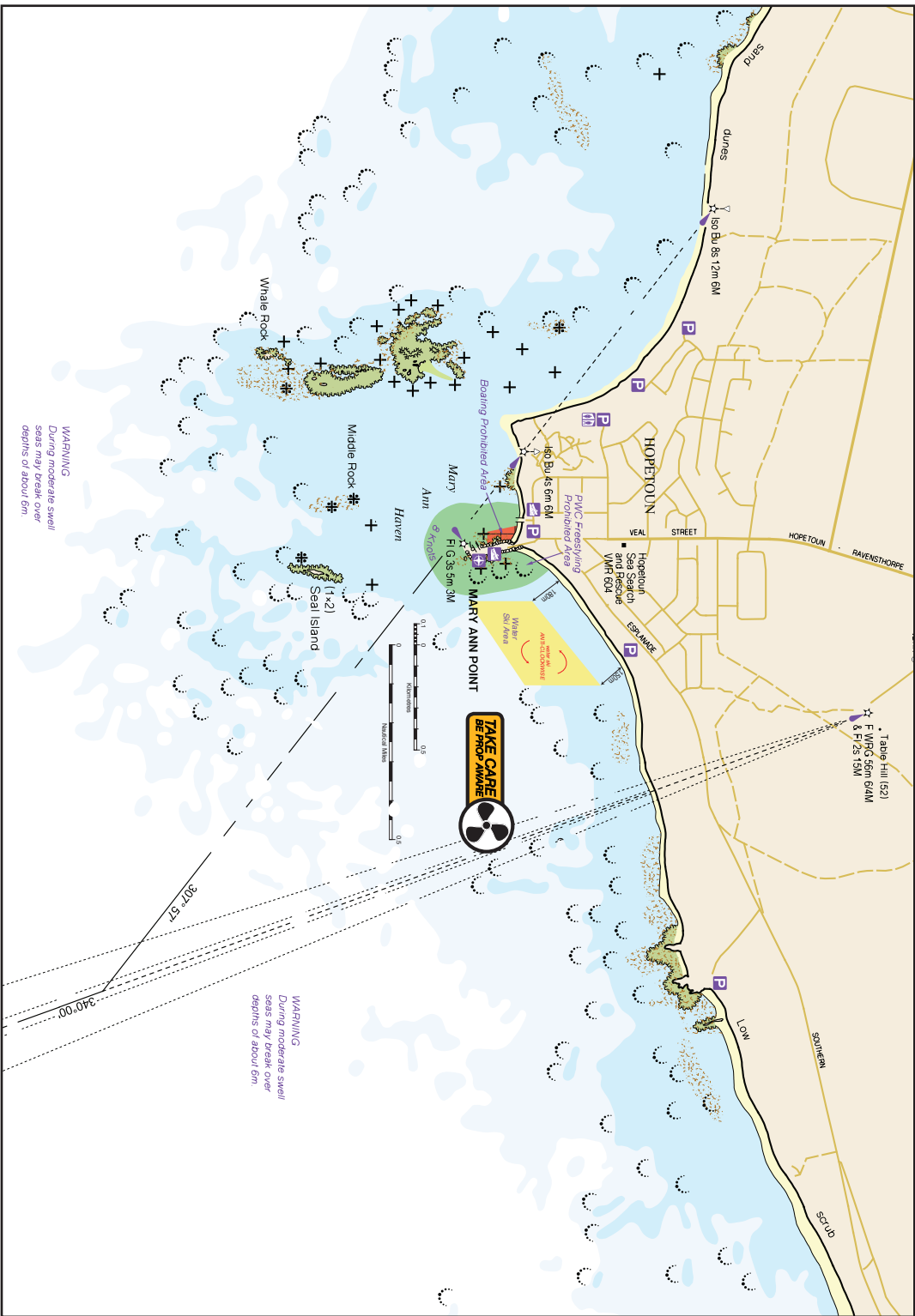
- a. through an arch of a bridge;
- b. in or through a mooring area;
- c. within 15 metres of a vessel underway;
- d. within 50 metres of a –
  - i. moored vessel;
  - ii. person in the water;
  - iii. jetty or wharf;
  - iv. river bank or low water mark.

### Lake Quallilup



#### Lake Quallilup water skiing roles

- Water skiing is to be carried out in an anti clockwise direction.
- Persons driving a speed boat towing a waterskier must be at least 17 years of age and must be accompanied in the boat by a person of at least 14 years of age.
- Water skiing is prohibited between sunset and sunrise.
- Vessels landing skiers have right of way over vessels taking off.
- Take-off and landing waterskiers is prohibited except within the ski take off and landing area.
- Ski take-off and landing will be between the marked signs on the southern foreshore and yellow buoys 60 metres offshore.
- Do not get closer than 50 metres when following another skier.





# ESPERANCE BAY

NOT TO BE USED FOR NAVIGATION

For more detailed information, refer to Nautical Charts  
Approaches to Esperance Aus 119  
Cape Le Grand to Cape Pasley Aus 763



CCTV used on WA Waterways

Distress beacons, EVDS and flares  
must be in-date



Remember to  
**LOG ON**  
**LOG OFF!**  
every trip  
with the local Marine Rescue group

## Diving

Any boat with divers (not snorkellers) operating from it must always display signals by day or night to alert other boat users. The daytime signal for divers is an International Code Flag "A". The flag must be at least 750 millimetres long and 600 millimetres wide.

Divers operating without a vessel, for example from a jetty, must also display the International Code Flag "A".

The flag can be displayed from a buoy and must not be less than 300 millimetres in length and 200 millimetres in width.

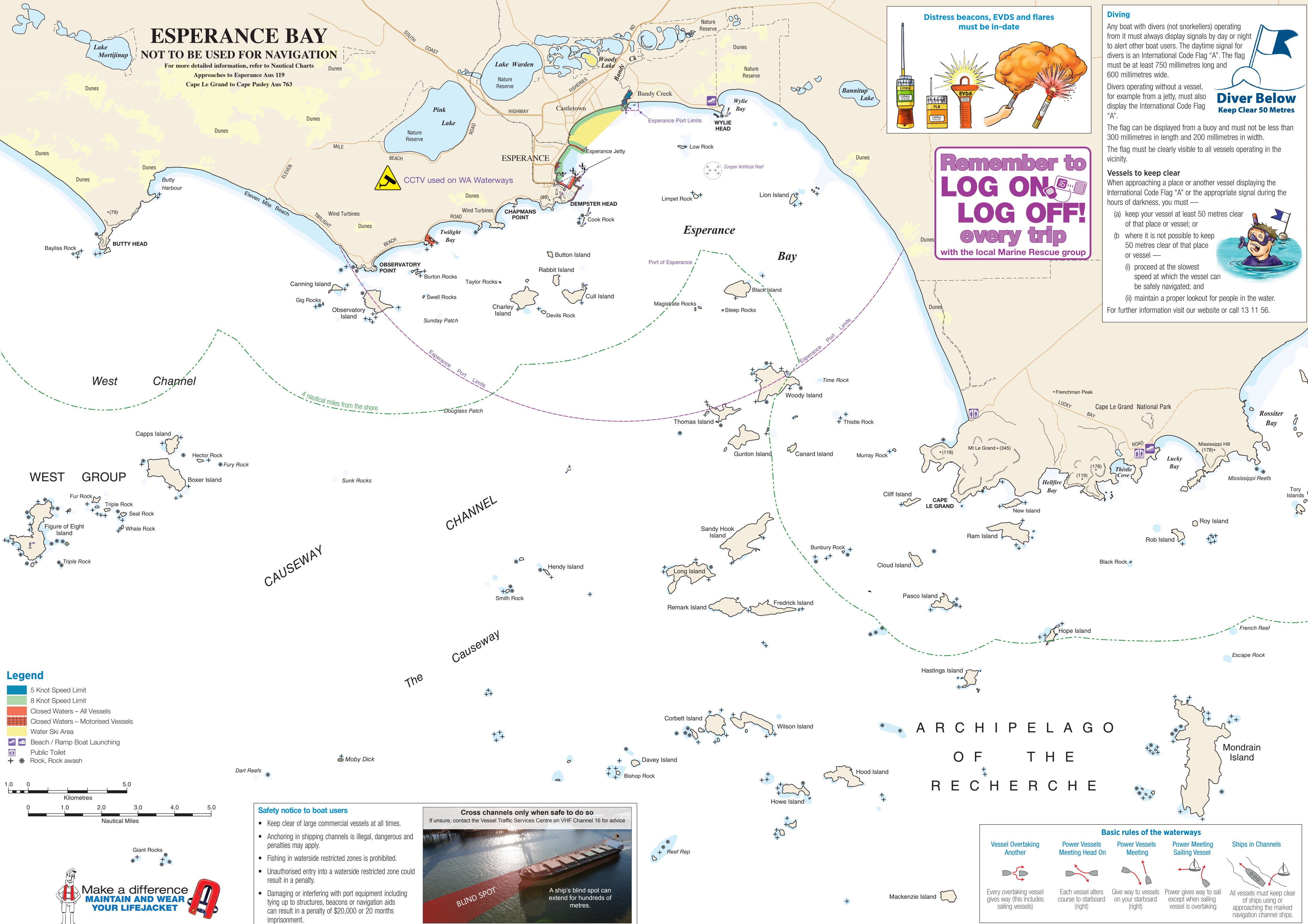
The flag must be clearly visible to all vessels operating in the vicinity.

## Vessels to keep clear

When approaching a place or another vessel displaying the International Code Flag "A" or the appropriate signal during the hours of darkness, you must —

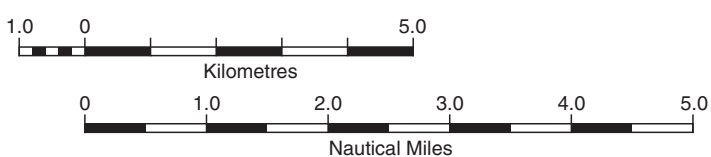
- keep your vessel at least 50 metres clear of that place or vessel; or
- where it is not possible to keep 50 metres clear of that place or vessel —
  - proceed at the slowest speed at which the vessel can be safely navigated; and
  - maintain a proper lookout for people in the water.

For further information visit our website or call 13 11 56.



## Legend

- 5 Knot Speed Limit
- 8 Knot Speed Limit
- Closed Waters – All Vessels
- Closed Waters – Motorised Vessels
- Water Ski Area
- Beach / Ramp Boat Launching
- Public Toilet
- Rock, Rock awash



## Safety notice to boat users

- Keep clear of large commercial vessels at all times.
- Anchoring in shipping channels is illegal, dangerous and penalties may apply.
- Fishing in waterside restricted zones is prohibited.
- Unauthorised entry into a waterside restricted zone could result in a penalty.
- Damaging or interfering with port equipment including tying up to structures, beacons or navigation aids can result in a penalty of \$20,000 or 20 months imprisonment.

## Cross channels only when safe to do so

If unsure, contact the Vessel Traffic Services Centre on VHF Channel 16 for advice



BLIND SPOT

A ship's blind spot can extend for hundreds of metres.

## ARCHIPELAGO OF THE RECHERCHE

## Basic rules of the waterways

- Vessel Overtaking Another**  
Every overtaking vessel gives way (this includes sailing vessels)
- Power Vessels Meeting Head On**  
Each vessel alters course to starboard (right)
- Power Vessels Meeting**  
Give way to vessels on your starboard (right)
- Power Meeting Sailing Vessel**  
Power gives way to sail except when sailing vessel is overtaking
- Ships in Channels**  
All vessels must keep clear of ships using or approaching the marked navigation channel ships.



Make a difference  
MAINTAIN AND WEAR  
YOUR LIFEJACKET