

Boating Guide

Karratha - Dampier



Marine Safety



August 2023

SAFETY EQUIPMENT REQUIREMENTS



	REGISTRABLE VESSELS Including sailing vessels that are or can be propelled by mechanical power.	
	PROTECTED WATERS Includes rivers, lakes, estuaries, harbours and waters within 400 metres from the shore in unprotected waters but excludes Cambridge Gulf and Lake Argyle.	UNPROTECTED WATERS Beyond 400 metres from the shore.
 Recreational Skipper's Ticket The skipper of a recreational vessel, powered by a motor greater than 6 horsepower must hold an RST.	✓	✓
 Lifejacket Carriage A lifejacket, as indicated in the table opposite, must be carried for every person on board.	✓	✓
	Minimum Level 100 MUST BE CARRIED	Minimum Level 100 MUST BE WORN
 Lifejacket Wearing Children older than one and younger than 12 As indicated in the table opposite.	✓	✓
	Minimum Level 100 MUST BE CARRIED	Minimum Level 100 MUST BE WORN
 Distress Beacon (in-date) A GPS enabled 406 MHz EPIRB OR If worn by at least one person, a GPS enabled PLB. Distress beacons must be in-date and registered with AMSA.	✓	✓
	Minimum Level 50S MUST BE WORN	Minimum Level 50S MUST BE WORN
 Red and Orange Flares (in-date) At least two hand held red flares and two hand held orange flares must be carried. OR Electronic Visual Distress Signal An electronic signalling device may be carried in lieu of flares (If a GPS enabled EPIRB or PLB (must be worn) is also carried.	✓	✓
	Minimum Level 50S MUST BE WORN	Minimum Level 50S MUST BE WORN
 Marine Radio A HF or VHF marine radio on any Registrable Vessel when operating more than 4 nautical miles from shore in unprotected waters.	✓	✓
	Minimum Level 50S MUST BE WORN	Minimum Level 50S MUST BE WORN
 Recommended Additional Safety Equipment It is recommended an anchor and line, a fire extinguisher and a means of removing water be carried.	✓	✓
	Minimum Level 50S MUST BE WORN	Minimum Level 50S MUST BE WORN

SERM-DLM0722-1

Handy local information

Tidal movements in the West Pilbara are very large. Tidal movements should be considered when planning a boating trip in the area. Tidal movements restrict the use of the Karratha Back Beach boat ramp. The ramp requires a tidal depth of at least 2.4 metres for most vessels. Most islands in the Dampier Archipelago are nature reserves and have access zonings. These zonings are shown on the map. Dogs are not permitted on the reserves. Did you know that there are two recognised dive sites in the West Pilbara. The first is east of Delambre Island and the other is near Bare Rock.

Recreational Skipper's Ticket (RST)

The person in charge of a recreational vessel with a motor of **6 horsepower or less** is not required to hold a Recreational Skipper's Ticket (RST). A person in charge of a recreational vessel with a motor **greater than 6 horsepower** is required to hold an RST. You are required to carry your RST card with you when boating.

Age restrictions

A person under 10 years may not drive a motor boat. RST holders over 14 but under 16 years of age are restricted to operating during daylight hours at a speed less than 8 knots.

Interstate skipper's tickets

If you hold a valid/current interstate ticket, recognised by DoT and you enter, as a visitor or with the intention of permanently residing in Western Australia, you have three months to have the qualification recognised.

For further information visit our website or call 13 11 56.

General speed limit restrictions

It is illegal, in any navigable waters to drive a motor boat at a speed exceeding eight knots, water ski or para-sail:

- through an arch of a bridge;
- in or through a mooring area;
- within 15 metres of a vessel underway;
- within 50 metres of -
 - (i) a moored vessel;
 - (ii) a person in the water;
 - (iii) a jetty or wharf;
 - (iv) a river bank or low water mark.

Personal water craft (PWC)

Every skipper of a PWC must hold an RST. A skipper who is older than 14 but under 16 years of age with an RST can only operate a PWC during daylight hours at a maximum speed of 8 knots.

- Every person on board a PWC must wear a lifejacket (minimum 50S) at all times.
- When travelling beyond 400 metres from shore in unprotected waters you need:
 - a GPS enabled EPIRB or PLB (must be worn); and
 - flares or electronic visual distress signal device.
- Beyond 4 nautical miles from shore in unprotected waters a marine radio must also be carried.

PWC may operate when towing a water skier. When towing a water skier all vessels are required to carry an observer of at least 14 years of age. Observers must also wear a lifejacket.

PWC not engaged in water skiing must at all times remain well clear of the take-off and landing area and any vessels engaged in water skiing.

For further information visit our website or call 13 11 56

Paddle Craft

Recreational canoes, kayaks, surf skis, wave skis, inflatables or similar paddle craft must comply with WA marine laws including carriage of safety equipment.

When travelling beyond 400 metres from shore in unprotected waters you need:

- lifejackets (minimum 50S) (must be worn);
- a GPS enabled EPIRB or PLB (must be worn); and
- flares.

For further information visit our website or call 13 11 56.



Contact details

Department of Transport
Email: Ed.Boat@transport.wa.gov.au
Website: www.transport.wa.gov.au/imarine
Karratha: 91596920
Marine Safety Hotline: 13 11 56

Police

Emergency: 000
Water Police: 9442 8600
Karratha: 9143 7200

Department of Fire and Emergency Services
Marine Rescue Western Australia
Emergency contact: VHF 16
Marine Rescue Port Walcott
Marine Rescue West Pilbara

Boating Weather Forecasts

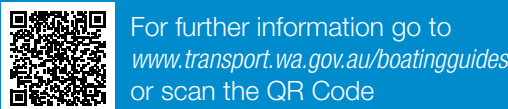
Boating weather: 1300 815 916
Website: www.bom.gov.au

Department of Primary Industry and Regional Development

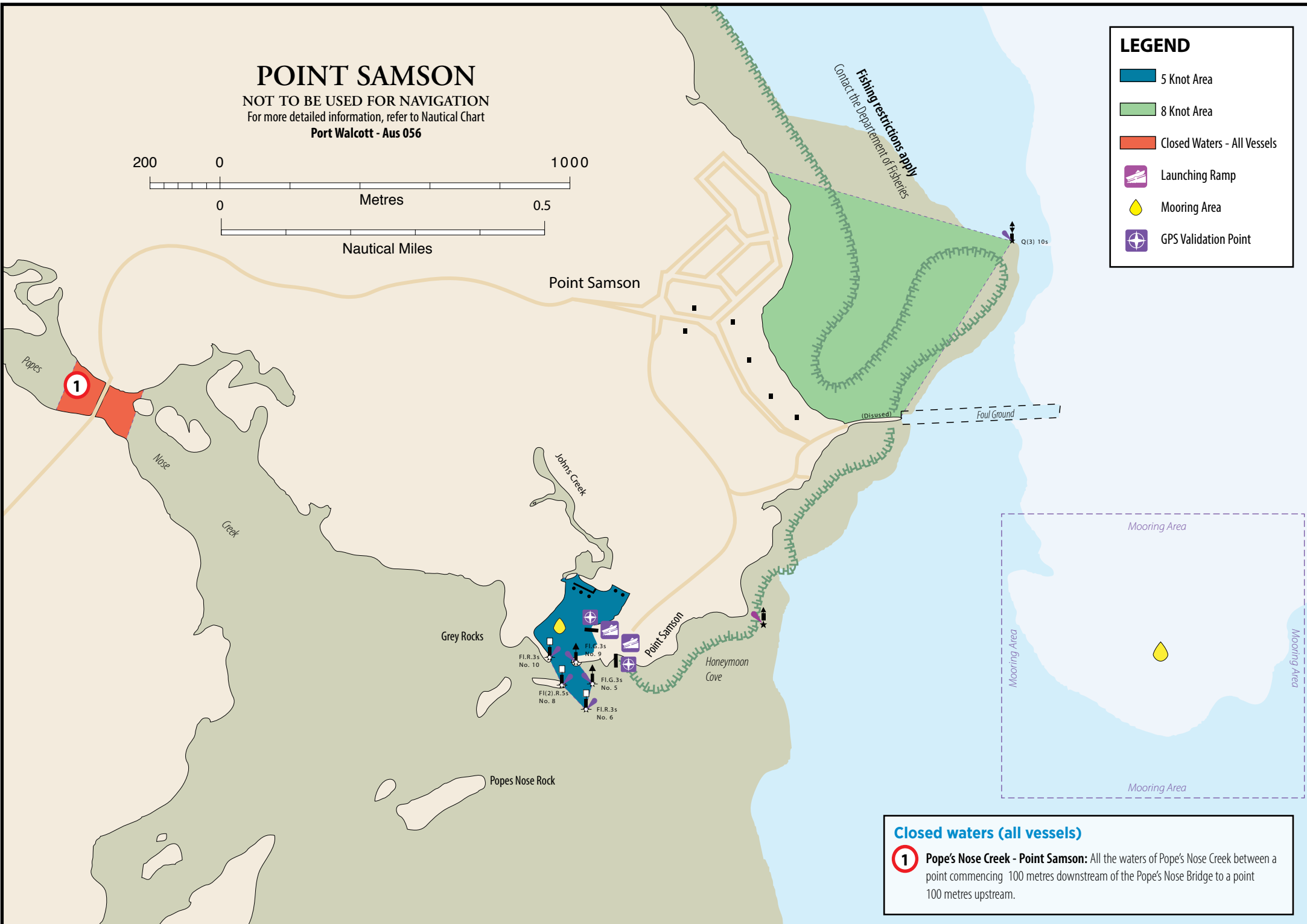
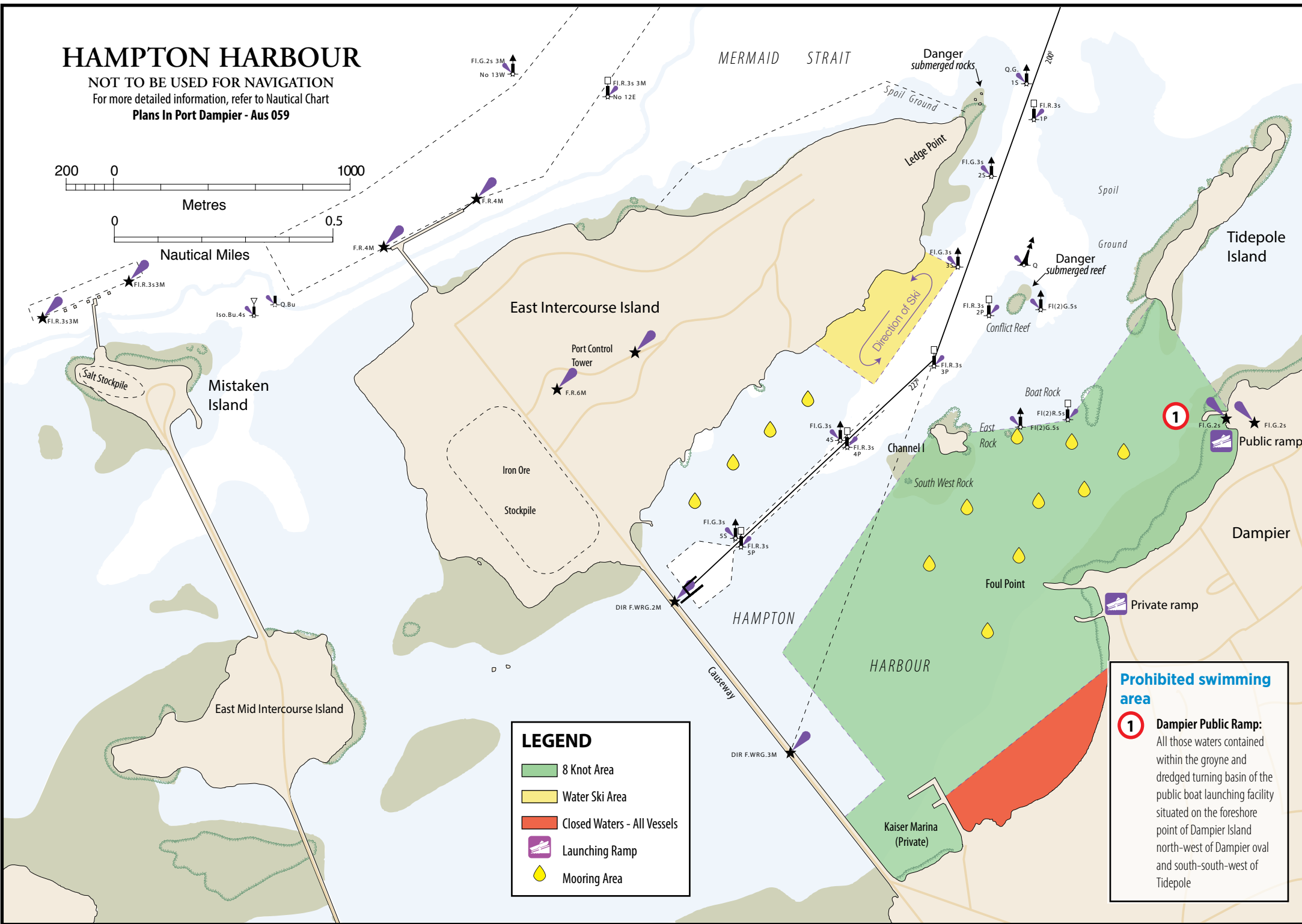
Fishwatch: 1800 815 507
Website: www.dpird.wa.gov.au

Department of Biodiversity, Conservation and Attractions

Website: www.dbca.wa.gov.au



The information contained in this publication is provided in good faith and believed to be accurate at time of publication. The State shall in no way be liable for any loss sustained or incurred by anyone relying on the information. 16-13-02-SER-0523-WEB-S1



DAMPIER ARCHIPELAGO

NOT TO BE USED FOR NAVIGATION

For more detailed information, refer to the Australian Hydrographic Nautical Charts

Aus 55 – Approaches to Port Walcott
Aus 56 – Port Walcott
Aus 57 – Dampier Archipelago
Aus 58 – Port of Dampier
Aus 59 – Plans in Port Dampier, Withnell Bay to King Bay, Dampier Wharves

LEGEND

- Port Security Zones - No Access
 - Fishing Restrictions - Contact Department of Fisheries
 - Shallow Water (0-5 metres at low tide)
 - Intertidal Areas - (dry at low tide)
 - Saline Flats
 - Mangroves
 - Closed Waters - Motorised Vessels
 - Reef
 - Offshore Rocks
 - Mooring Areas
 - Launching Ramps
- Approximately 4 nautical miles from mainland shore

- Access Zoning for Island Reserves - Department of Parks and Wildlife.**
- Special Conservation Zone - No access at any time.
 - Conservation Zone - Day access only
 - Recreation Zone - Day trip and camping areas. (camping permitted only up to 100m inland of the high-water mark)
 - Conservation & Recreation Reserves - Day trip and camping areas.

WARNING! — Crocodiles

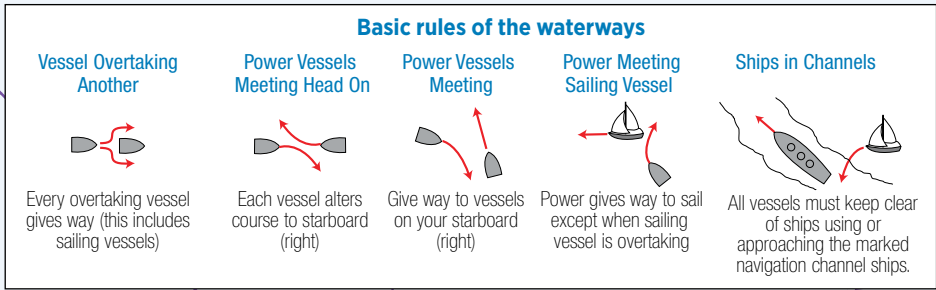
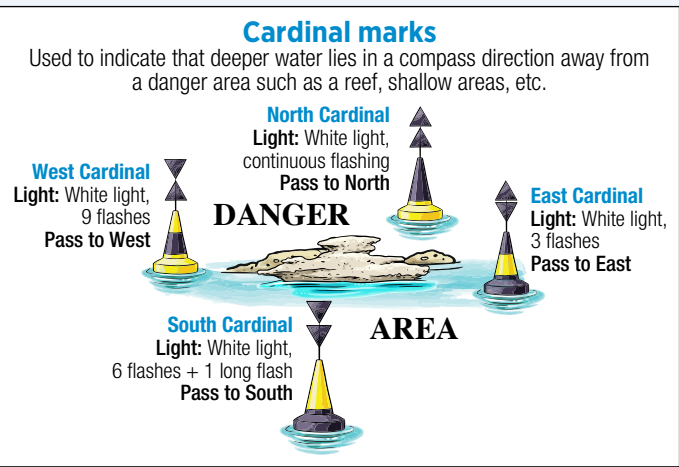
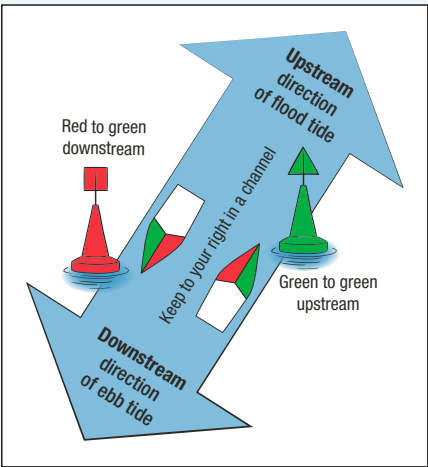
Crocodiles inhabit Pilbara coastal waterways so please exercise caution when launching boats and do not clean fish at the waters edge. Immediately report all crocodile sightings to DPaW on (08) 9182 2000

WARNING! — Tides

There is a 5m tidal range. Consideration to tidal movements should be given when planning a boating trip in the area.

Notice to Mariners

Before undertaking any boating activities please check the Department of Transport's chart updates and Temporary Notices to Mariners list www.transport.wa.gov.au/imagine/19101.asp



Vessel registration

Most boats or yachts must be registered with DoT and an annual registration fee is payable.

Vessels that must be registered

If your boat has a motor, or is fitted for one, it must be registered and is subject to an annual registration fee. Yachts, canoes, surf skis and other craft not fitted for a motor, are not required to be registered.

Transfer of ownership

You must advise DoT on the sale (within seven days) or the acquisition (within 15 days) of any power driven vessel.

Interstate vessels

If your boat is registered in another state, you have three months after bringing it into WA to register it with DoT (recreational boats brought in from the NT have only 30 days).

For further information visit our website or call 13 11 56.

Placement of registration numbers and sticker

Numbers must be fixed as follows:

Powerboats – Midships on both sides of the hull where they are clearly visible – not under the flare of the bow and 150mm in size.

Yachts – On the side of the hull immediately forward of the transom and 50mm in size.

Inflatable boats – As for a powerboat or on boards hung over either side and 150mm in size.

Tenders – Must have its parent vessel's number displayed on each side of the boat forward of the transom.

On all vessels, the registration sticker must be fixed on the port side, adjacent to the registration number.

Obstruction of navigation aids, channels and leads

Cray pots, lines and floats, drop nets, fishing nets, marker buoys or other buoyed objects can not be placed or allowed to remain in any channel or fairway in any port or harbour, or in any channel, fairway or passage in any navigable waters without the permission of DoT.

You also can't anchor or moor a vessel in any channel or fairway, unless the vessel is in distress.

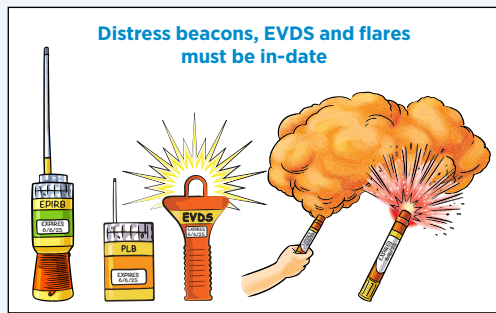
Accident/incident reporting

When an accident results in serious injury or death, or the vessel has been damaged enough to make it unseaworthy or unsafe, the owner or skipper must report full particulars of the incident to the Department within seven days.

Pick up a special form from the Department's offices, download it from the website: www.transport.wa.gov.au/imagine/1282.asp or phone 13 11 56 for one to be sent out.

Port security

Under State Port Authority legislation a continuous 50 metres restricted area exists around all port facilities and jetties within the ports of Dampier and Walcott, 700 metres around Woodside's Withnell Bay facility and 100 metres around the Woodside Slug Catcher facility in Withnell Bay. Unauthorised vessels may not enter these areas. Penalty \$5,000



Remember to LOG ON LOG OFF! every trip

with the local Marine Rescue group

