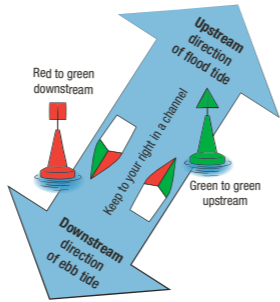
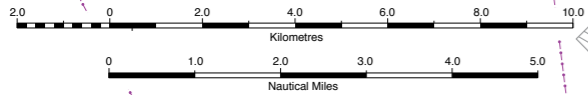


Onslow

NOT TO BE USED FOR NAVIGATION
For more detailed information, refer to the Australian Hydrographic Nautical Chart Aus 743 - North West Coast



LEGEND

- Shallow Water (0-5 metres at low tide)
- 5 knot speed restriction
- Swimming prohibited
- Hire and Drive area
- Spoil ground
- Port/harbour limits
- Shipping channel
- Submarine pipelines
- Submarine cables
- PLATFORM Production platform
- Monitoring equipment in vicinity
- Launching ramp

WARNING! - Crocodiles
Crocodiles inhabit Pilbara coastal waterways so please exercise caution when launching boats and do not clean fish at the waters edge. Immediately report all crocodile sightings to Department of Biodiversity, Conservation and Attractions on (08) 9182 2000

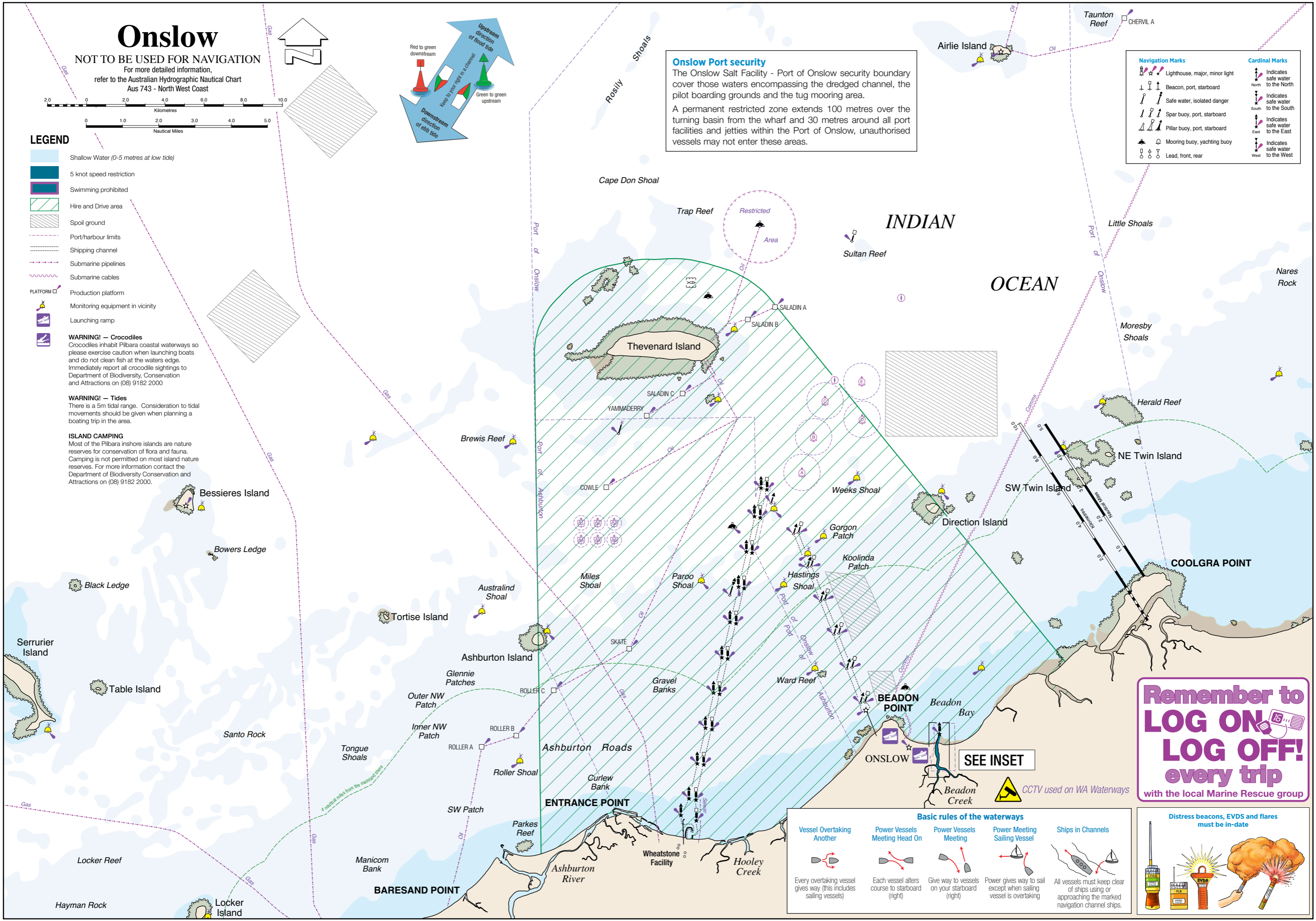
WARNING! - Tides
There is a 5m tidal range. Consideration to tidal movements should be given when planning a boating trip in the area.

ISLAND CAMPING
Most of the Pilbara inshore islands are nature reserves for conservation of flora and fauna. Camping is not permitted on most island nature reserves. For more information contact the Department of Biodiversity Conservation and Attractions on (08) 9182 2000.

Onslow Port security

The Onslow Salt Facility - Port of Onslow security boundary cover those waters encompassing the dredged channel, the pilot boarding grounds and the tug mooring area. A permanent restricted zone extends 100 metres over the turning basin from the wharf and 30 metres around all port facilities and jetties within the Port of Onslow, unauthorised vessels may not enter these areas.

Navigation Marks	Cardinal Marks
Lighthouse, major, minor light	Indicates safe water to the North
Beacon, port, starboard	Indicates safe water to the South
Safe water, isolated danger	Indicates safe water to the East
Spar buoy, port, starboard	Indicates safe water to the West
Pillar buoy, port, starboard	
Mooring buoy, yachting buoy	
Lead, front, rear	



Remember to LOG ON, LOG OFF! every trip
with the local Marine Rescue group

Basic rules of the waterways

<p>Vessel Overtaking Another</p> <p>Every overtaking vessel gives way (this includes sailing vessels)</p>	<p>Power Vessels Meeting Head On</p> <p>Each vessel alters course to starboard (right)</p>	<p>Power Vessels Meeting</p> <p>Give way to vessels on your starboard (right)</p>	<p>Power Meeting Sailing Vessel</p> <p>Power gives way to sail except when sailing vessel is overtaking</p>	<p>Ships in Channels</p> <p>All vessels must keep clear of ships using or approaching the marked navigation channel ships.</p>
--	---	--	--	---

Distress beacons, EVDS and flares must be in-date

SEE INSET

CCTV used on WA Waterways