

Boating Guide Port Hedland Marine Safety



YOU'RE THE SKIPPER
YOU'RE RESPONSIBLE

August 2023

SAFETY EQUIPMENT REQUIREMENTS



REGISTRABLE VESSELS Including sailing vessels that are or can be propelled by mechanical power.		UNPROTECTED WATERS Beyond 400 metres from the shore.	
PROTECTED WATERS Includes rivers, lakes, estuaries, harbours and waters within 400 metres from the shore but excludes Cambridge Gulf and Lake Argyle.		PROTECTED WATERS Beyond 400 metres from the shore.	
 Lifejacket Carriage A lifejacket, as indicated in the table opposite, must be carried for every person on board.	Vessels smaller than 4.8m Vessels 4.8m and larger	 Minimum Level 100 MUST BE CARRIED	 Minimum Level 100 MUST BE WORN
 Lifejacket Wearing As indicated in the table opposite.	Children older than one and younger than 12 Personal Water Craft	 Minimum Level 100 MUST BE CARRIED	 Minimum Level 100 MUST BE WORN
 Distress Beacon (in-date) A GPS enabled 406 MHz EPIRB OR If worn by at least one person, a GPS enabled PLB. Distress beacons must be in-date and registered with AMSA.		 Minimum Level 50S MUST BE WORN	 Minimum Level 50S MUST BE WORN
 Red and Orange Flares (in-date) At least two hand held red flares and two hand held orange flares must be carried. OR  Electronic Visual Distress Signal An electronic signalling device may be carried in lieu of flares IF a GPS enabled EPIRB or PLB (must be worn) is also carried.		 Minimum Level 50S MUST BE WORN	 Minimum Level 50S MUST BE WORN
 Marine Radio A HF or VHF marine radio on any Registrable Vessel when operating more than 4 nautical miles from shore in unprotected waters.		 Minimum Level 50S MUST BE WORN	 Minimum Level 50S MUST BE WORN
 Recommended Additional Safety Equipment It is recommended an anchor and line, a fire extinguisher and a means of removing water be carried.		 Minimum Level 50S MUST BE WORN	 Minimum Level 50S MUST BE WORN

SERM-DLM0722-1

Contact details

Department of Transport

Email: Ed.Boat@transport.wa.gov.au
Website: www.transport.wa.gov.au/imarine
Karratha: 9159 6900
Marine Safety Hotline: 13 11 56

Police

Emergency: 000
Water Police: 9442 8600
Port Hedland: 9173 8100
South Hedland: 9160 2100

Department of Fire and Emergency Services

Marine Rescue Western Australia
Emergency contact: VHF 16
Marine Rescue Port Hedland

Boating Weather Forecasts

Boating weather: 1300 815 916
Website: www.bom.gov.au

Department of Primary Industry and Regional Development

Fishwatch: 1800 815 507
Website: www.dpird.wa.gov.au


Department of Biodiversity, Conservation and Attractions

Website: www.dbca.wa.gov.au

 **DECKEE** Boating in WA just got smarter.
Download the free Deckee app.

 **DoT Direct** anywhere, anytime!
Save time and go online today

 Join us at
facebook.com/MarineSafetyWA

 For further information go to
www.transport.wa.gov.au/boatingguides
or scan the QR Code

The information contained in this publication is provided in good faith and believed to be accurate at time of publication. The State shall in no way be liable for any loss sustained or incurred by anyone relying on the information. 16-22-02-SER-0523-WEB-S1



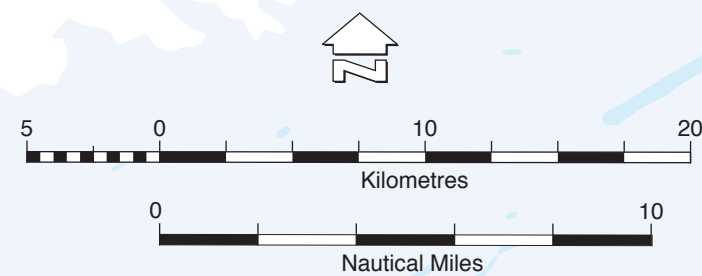
Port Hedland

Not to be used for navigation
For more detailed information, refer to the Australian Hydrographic Nautical Charts
Aus 52 – Approaches to Port Hedland



East Pilbara

Not to be used for navigation



WARNING - Tropical cyclone region

The north west of Western Australia experiences more severe cyclones than any other part of the Australian coastline and is one of the most cyclone-prone coasts anywhere in the world.

The cyclone season extends from November through to April, but most coastal impacts occur in the period from January to March.

Check the weather before heading out.

North Turtle Island

Little Turtle Island

Larrey Point

Poissonnier Point

De Grey River

Spit Point

Cape Keraudren

Pardoo
See Cape Keraudren Inset

Port Hedland

Cooke Point

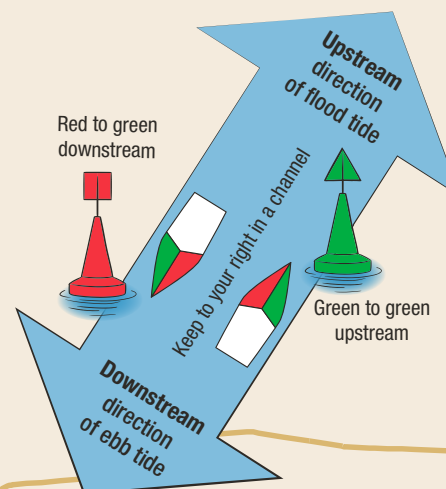
South Hedland

Great Northern Highway

4 nautical miles for the mainland

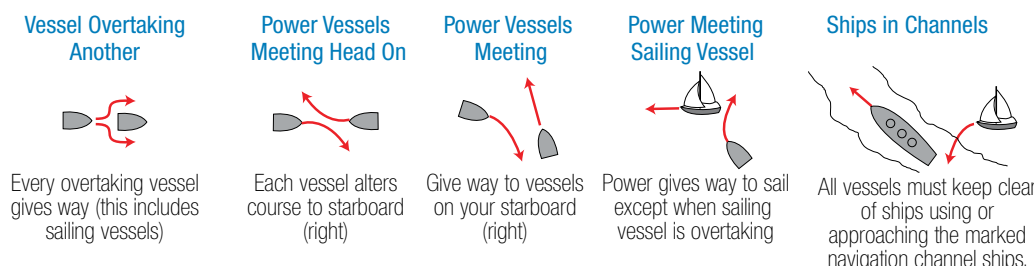
4 nautical miles for the mainland

4 nautical miles for the mainland



Remember to
LOG ON
LOG OFF!
every trip
with the local Marine Rescue group

Basic rules of the waterways



Distress beacons (in-date)

EPIRB (AS/NZS 4280.1) or **PLB** (AS/NZS 4280.2)

Distress beacons must be in-date and registered with Australian Maritime Safety Authority (AMSA).

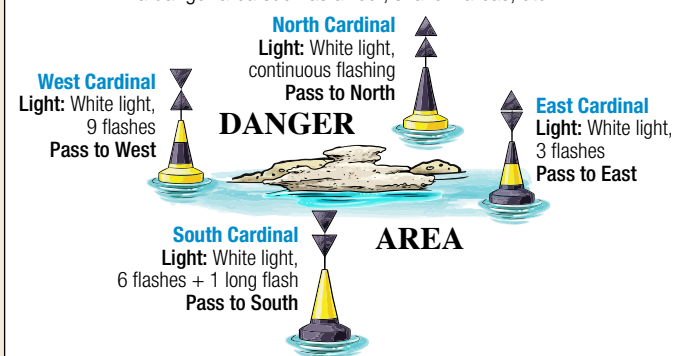
When operating more than 400 metres from shore in unprotected waters you must carry a GPS enabled EPIRB or PLB worn by a person on board.

For further information visit our website or call 13 11 56.

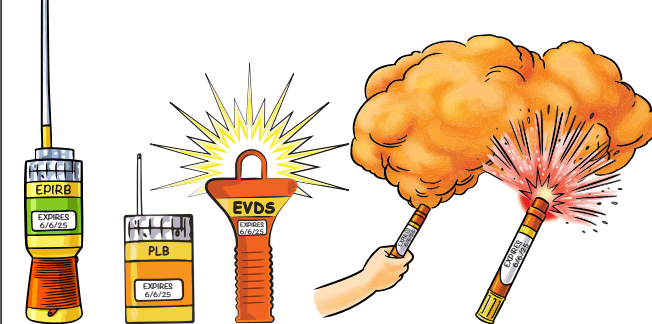


Cardinal marks

Used to indicate that deeper water lies in a compass direction away from a danger area such as a reef, shallow areas, etc.



Distress beacons, EVDS and flares must be in-date



Paddle craft, kiteboarding and windsurfing

When travelling beyond 400 metres from shore in unprotected waters you need:

- lifejackets (minimum 50S) must be worn;
- a GPS enabled EPIRB or PLB (must be worn);
- flares.

For further information visit our website or call 13 11 56.



GPS validation markers

Global Positioning System (GPS) validation markers are unique visible marks placed at a number of public boat ramps and jetties where skippers and owners of portable GPS units can validate their position and map datum settings. The markers are small, flat and yellow, similar to 'cats eye' road lane markers.

For further information visit our website or call 13 11 56.



Recreational Skipper's Ticket

The person in charge of a recreational vessel with a motor of **6 horsepower or less** is not required to hold a Recreational Skipper's Ticket (RST).

A skipper in charge of a recreational vessel with a motor **greater than 6 horsepower** is required to hold an RST and carry it when boating.

Age restrictions

A person under 10 years may not drive a motor boat.

RST holders over 14 but under 16 years of age are restricted to operating during daylight hours at a speed less than 8 knots.

Interstate skipper's tickets

If you hold a valid/current interstate ticket, recognised by DoT and you enter, as a visitor or with the intention of permanently residing in Western Australia, you have three months to have the qualification recognised.

For further information visit our website or call 13 11 56.



Marine radio

Please remember to log on and to log off with the local Marine Rescue (MR)

Provide your vessel's:

- name
- registration number or call sign
- departure point
- destination
- trip intentions
- number of people on board
- fuel carried
- estimated time for return.

This is vital information in case of an emergency. Contact Marine Rescue Port Hedland on channel 16 VHF.

Tides

Port Hedland experiences a very large tidal range – up to six metres rise and fall every six hours on spring tides.

The times and ranges of large tides can determine whether launching and retrieval is possible as these tides are large enough to make some ramps unusable at certain times.

The currents created by these large tides – known as tidal streams – can run as fast as 1.5 knots in the Pilbara. This can impact on your fuel consumption so plan ahead.

Make sure you check the tide charts before your boating trip. Vessels may request the current tide height by calling the Port Hedland harbour on VHF Channel 16.

Cape Keraudren

Not to be used for navigation

