








# Boating Guide Rottnest Island Marine Safety



August 2023

## SAFETY EQUIPMENT REQUIREMENTS

		REGISTRABLE VESSELS	
		Including sailing vessels that are or can be propelled by mechanical power.	
		PROTECTED WATERS	UNPROTECTED WATERS
		Includes rivers, lakes, estuaries, harbours and waters within 400 metres from the shore in unprotected waters but excludes Cambridge Gulf and Lake Argyle.	Beyond 400 metres from the shore.
	<b>Recreational Skipper's Ticket</b> The skipper of a recreational vessel, powered by a motor greater than 6 horsepower must hold an RST.	✓	✓
	<b>Lifejacket Carriage</b> A lifejacket, as indicated in the table opposite, must be carried for every person on board.	✓ Minimum Level 100 <b>MUST BE CARRIED</b>	✓ Minimum Level 100 <b>MUST BE WORN</b>
	<b>Vessels smaller than 4.8m</b>  <b>Vessels 4.8m and larger</b>	✓ Minimum Level 100 <b>MUST BE CARRIED</b>	✓ Minimum Level 100 <b>MUST BE CARRIED</b>
	<b>Lifejacket Wearing</b> As indicated in the table opposite.	✓ Minimum Level 100 <b>MUST BE CARRIED</b>	✓ Minimum Level 100 <b>MUST BE WORN</b>
	<b>Children older than one and younger than 12</b>  <b>Personal Water Craft</b>	✓ Minimum Level 50S <b>MUST BE WORN</b>	✓ Minimum Level 50S <b>MUST BE WORN</b>
	<b>Distress Beacon (in-date)</b> A GPS enabled 406 Mhz EPIRB <b>OR</b> If worn by at least one person, a GPS enabled PLB. Distress beacons must be in-date and registered with AMSA.	<b>RECOMMENDED</b>	✓
	<b>Red and Orange Flares (in-date)</b> At least two hand held red flares and two hand held orange flares must be carried. <b>OR</b> <b>Electronic Visual Distress Signal</b> An electronic signalling device may be carried in lieu of flares <b>IF</b> a GPS enabled EPIRB or PLB (must be worn) is also carried.	<b>RECOMMENDED</b>	✓
	<b>Marine Radio</b> A HF or VHF marine radio on any Registrable Vessel when operating <b>more than 4 nautical miles</b> from shore in unprotected waters.	<b>RECOMMENDED</b>	<b>REQUIRED</b> beyond 4 nautical miles  <b>RECOMMENDED</b> within 4 nautical miles
	<b>Recommended Additional Safety Equipment</b> It is recommended an anchor and line, a fire extinguisher and a means of removing water be carried.	<b>RECOMMENDED</b>	<b>RECOMMENDED</b>

SERIM-DLM0722-1

### Recreational Skipper's Ticket (RST)

The person in charge of a recreational vessel with a motor of **6hp or less** is not required to hold a Recreational Skipper's Ticket (RST). A person in charge of a recreational vessel with a motor **greater than 6hp** is required to hold an RST. You are required to carry your RST card with you when boating.

#### Age restrictions

A person under 10 years may not drive a motor boat. RST holders over 14 but under 16 years of age are restricted to operating during daylight hours at a speed less than 8 knots.

#### Interstate skipper's tickets

If you hold a valid/current interstate ticket, recognised by DoT and you enter, as a visitor or with the intention of permanently residing in Western Australia, you have three months to have the qualification recognised. For further information visit our website or call 13 11 56.

#### General speed limit restrictions

It is illegal, in any navigable waters to drive a motor boat at a speed exceeding eight knots, water ski or para-sail:

- through an arch of a bridge;
- in or through a mooring area;
- within 15 metres of a vessel underway;
- within 50 metres of -
  - (i) a moored vessel;
  - (ii) a person in the water;
  - (iii) a jetty or wharf;
  - (iv) a river bank or low water mark.

#### GPS validation markers

Global Positioning System (GPS) validation markers are unique visible marks placed at a number of public boat ramps and jetties where skippers and owners of portable GPS units can validate their position and map datum settings. The markers are small, flat and yellow, similar to 'cats eye' road lane markers. For further information visit our website or call 13 11 56.

### Personal water craft (PWC)

Every skipper of a PWC must hold an RST. A skipper who is older than 14 but under 16 years of age with an RST can only operate a PWC during daylight hours at a maximum speed of 8 knots.

- Every person on board a PWC must wear a lifejacket (minimum 50S) at all times.
- When travelling beyond 400 metres from shore in unprotected waters you need:
  - a GPS enabled EPIRB or PLB (must be worn); and
  - flares or electronic visual distress signal device.
- Beyond 4 nautical miles from shore in unprotected waters a marine radio must also be carried.

PWC may operate when towing a water skier. When towing a water skier all vessels are required to carry an observer of at least 14 years of age. Observers must also wear a lifejacket.

PWC not engaged in water skiing must at all times remain well clear of the take-off and landing area and any vessels engaged in water skiing.

For further information visit our website or call 13 11 56

#### Paddle Craft

Recreational canoes, kayaks, surf skis, wave skis, inflatables or similar paddle craft must comply with WA marine laws including carriage of safety equipment.

When travelling beyond 400 metres from shore in unprotected waters you need:

- lifejackets (minimum 50S) (must be worn);
- a GPS enabled EPIRB or PLB (must be worn); and
- flares.

For further information visit our website or call 13 11 56.



### Contact details

#### Department of Transport

Email: Ed.Boat@transport.wa.gov.au  
Website: www.transport.wa.gov.au/imarine  
Marine Safety Hotline: 13 11 56

#### Police

Emergency: 000  
Water Police: 9442 8600

#### Department of Fire and Emergency Services

Marine Rescue Western Australia  
Emergency contact: VHF 16  
Marine Rescue Fremantle  
Marine Rescue Cockburn  
Marine Rescue Whitfords

#### Boating Weather Forecasts

Boating weather: 1300 815 916  
Website: www.bom.gov.au

#### Department of Primary Industry and Regional Development

Fishwatch: 1800 815 507  
Website: www.dpird.wa.gov.au

#### Department of Biodiversity, Conservation and Attractions

Website: www.dbca.wa.gov.au



Boating in WA just got smarter.  
Download the free Deckee app.



anywhere, anytime!  
Save time and go online today



Join us at  
facebook.com/MarineSafetyWA



For further information go to  
www.transport.wa.gov.au/boatingguides  
or scan the QR Code

The information contained in this publication is provided in good faith and believed to be accurate at time of publication. The State shall in no way be liable for any loss sustained or incurred by anyone relying on the information. 16-23-02-SER-0523-WEB-S1



### Kiteboards and windsurfing

With the onset of the sea breeze windsurfers and kiteboarders congregate at many popular locations. In certain conditions these small, fast moving sailing craft may be difficult to see and skippers need to maintain a proper lookout at all times and take appropriate action.

All windsurfers and kiteboarders have a duty of care to ensure their activities are conducted with regard to the prevailing conditions and circumstances and take appropriate action to avoid collisions.

When travelling beyond 400 metres from shore in unprotected waters you need:

- lifejackets (minimum 50S) (must be worn);
- a GPS enabled EPIRB or PLB (must be worn); and
- flares.

For further information visit our website or call 13 11 56

#### Aids to navigation

It is illegal to interfere with, remove or damage any beacon, buoy or other artificial aid to navigation. Without permission in writing from the Department of Transport (DoT), it is illegal to secure any vessel to any beacon, buoy, seamark or other aid to navigation.

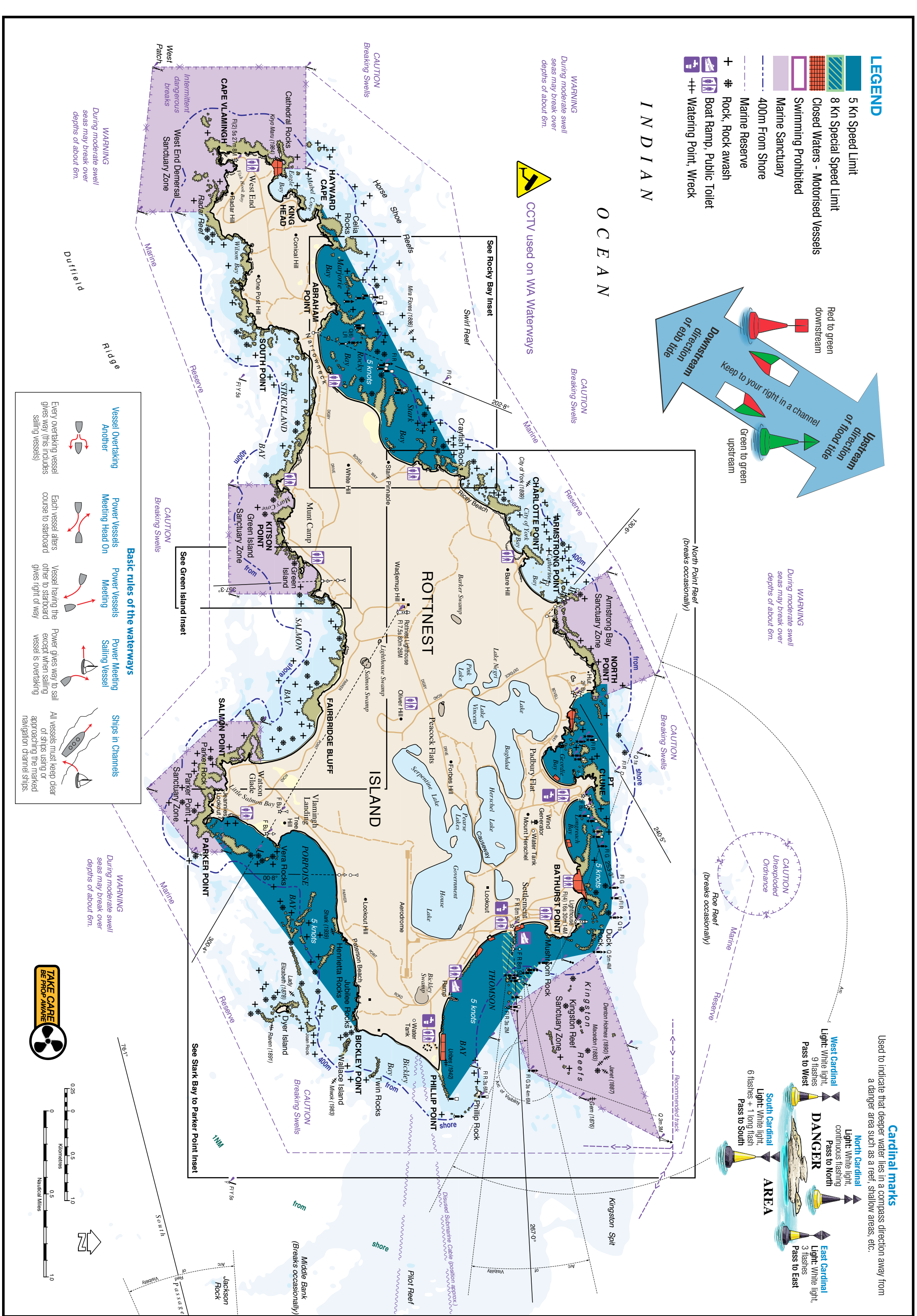
#### Obstruction of navigation aids, channels and leads

Cray pots, lines and floats, drop nets, fishing nets, marker buoys or other buoyed objects can not be placed or allowed to remain in any channel or fairway in any port or harbour, or in any channel, fairway or passage in any navigable waters without the permission of DoT.

You also can't anchor or moor a vessel in any channel or fairway, unless the vessel is in distress.

#### Maintain a good lookout and a safe speed

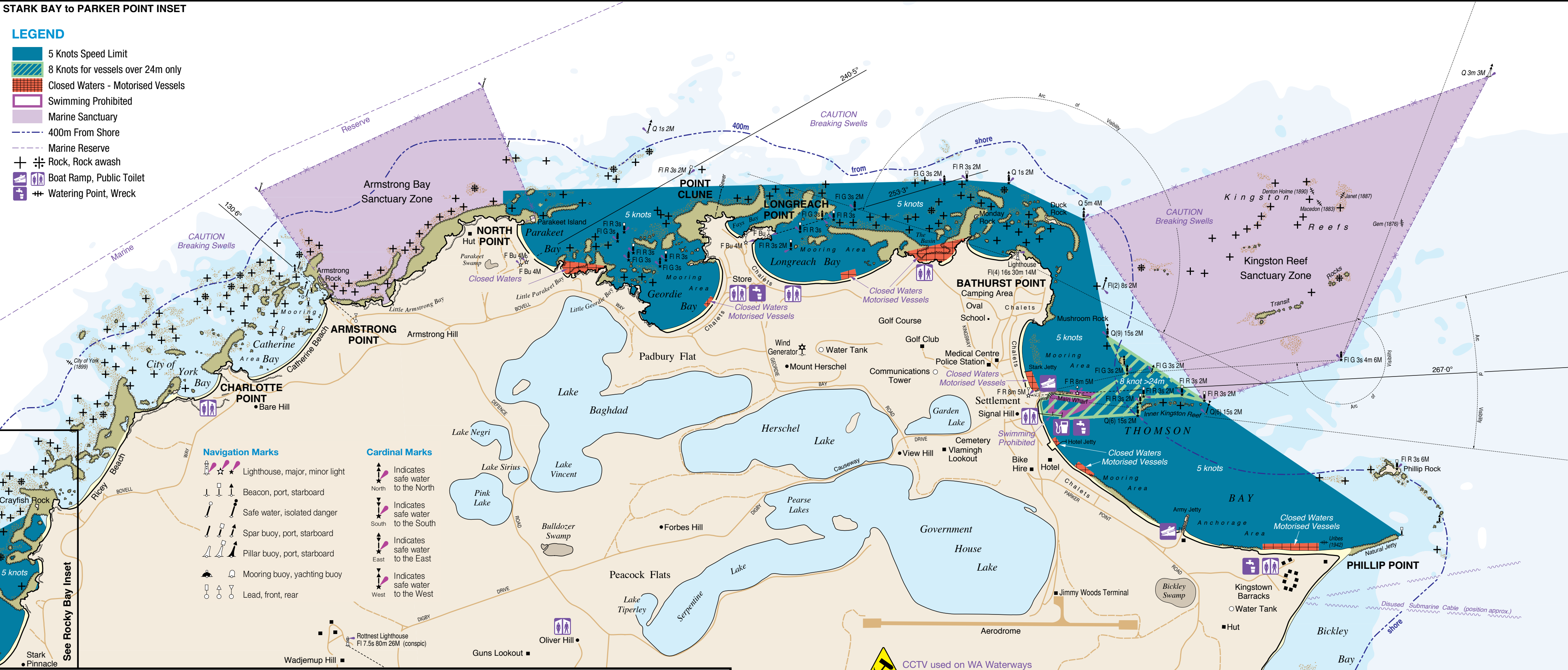
Please maintain a good lookout for swimmers, canoes, paddle craft and other vessels. Exercise caution and operate at a safe speed when navigating.



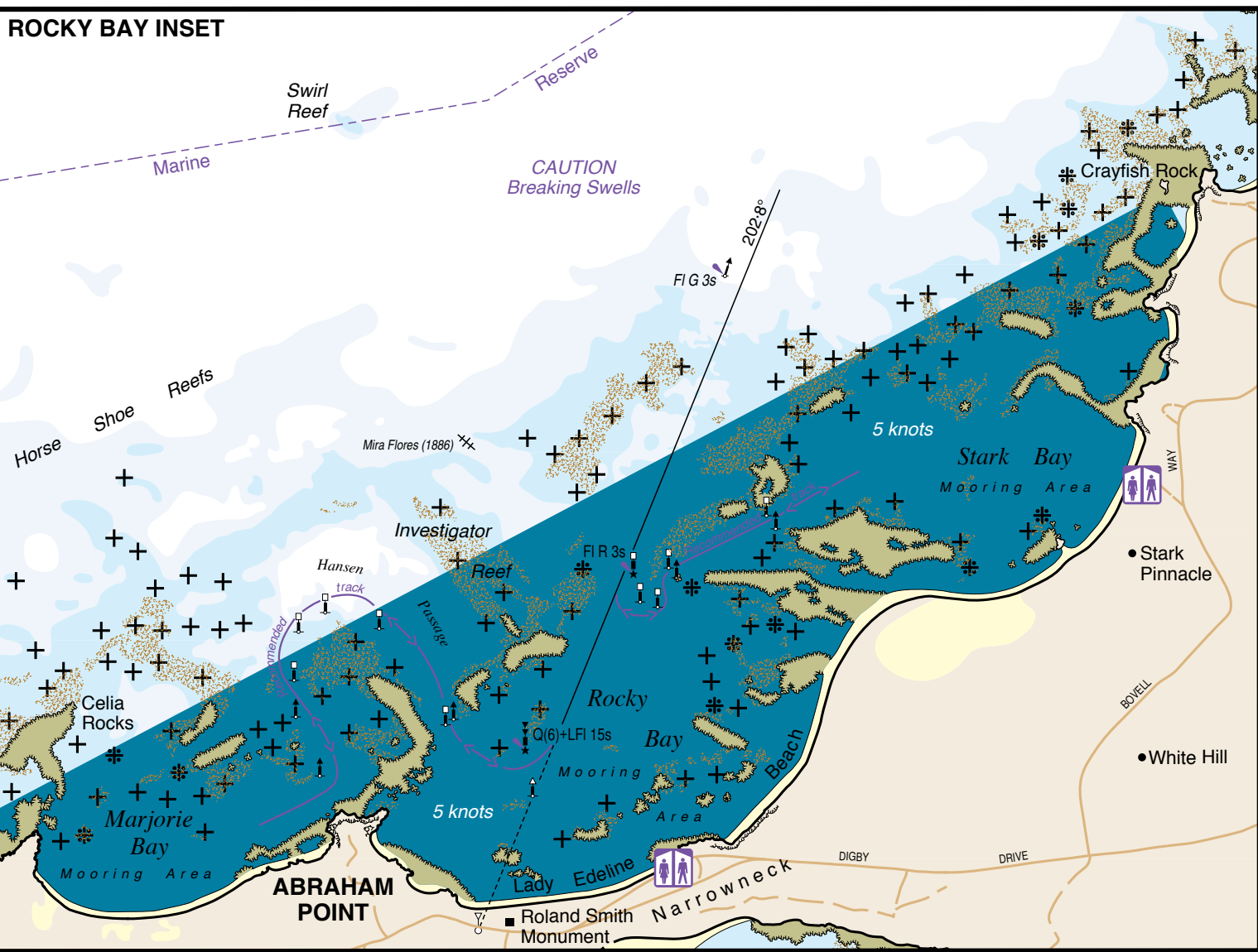


STARK BAY to PARKER POINT INSET

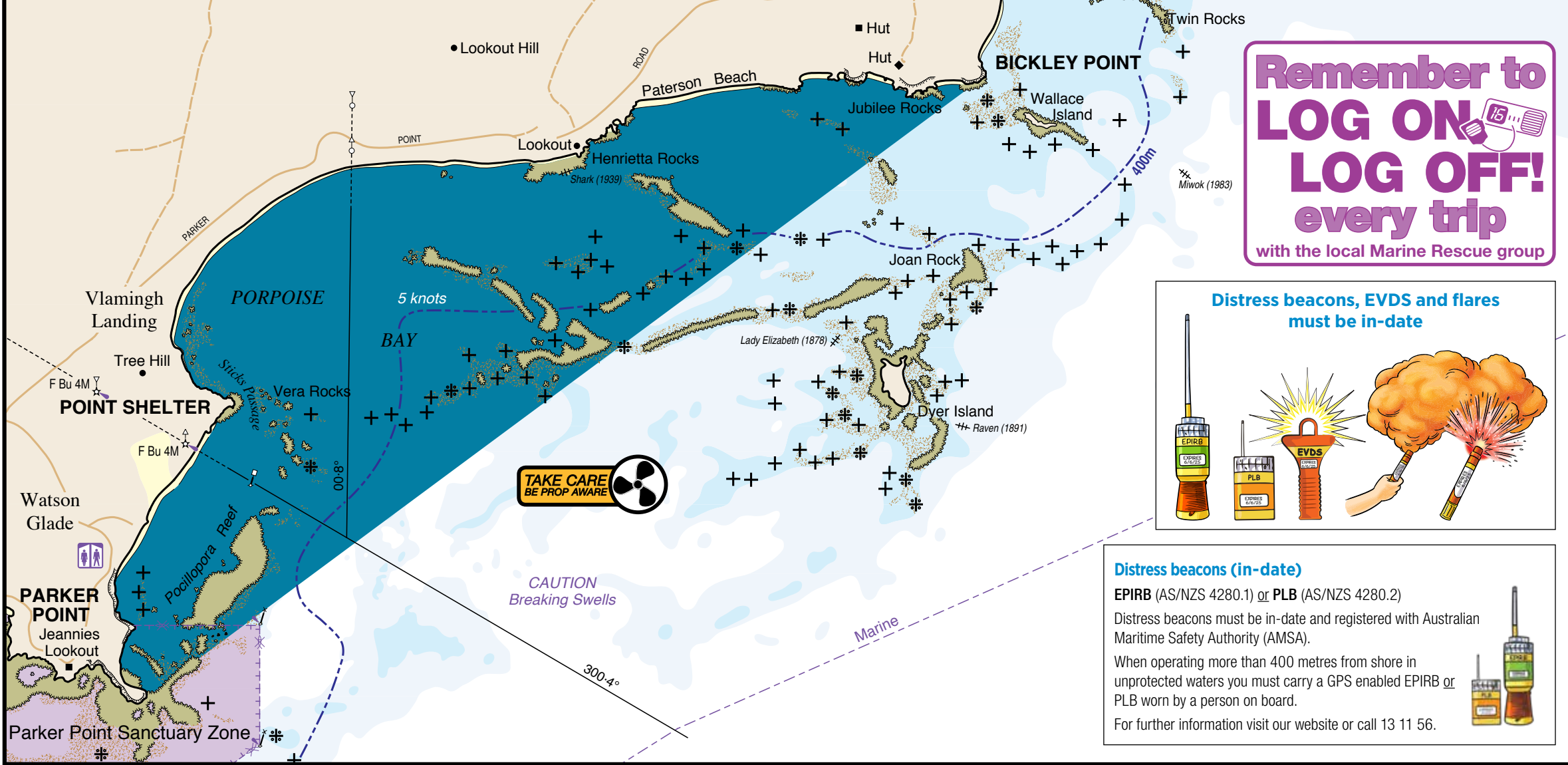
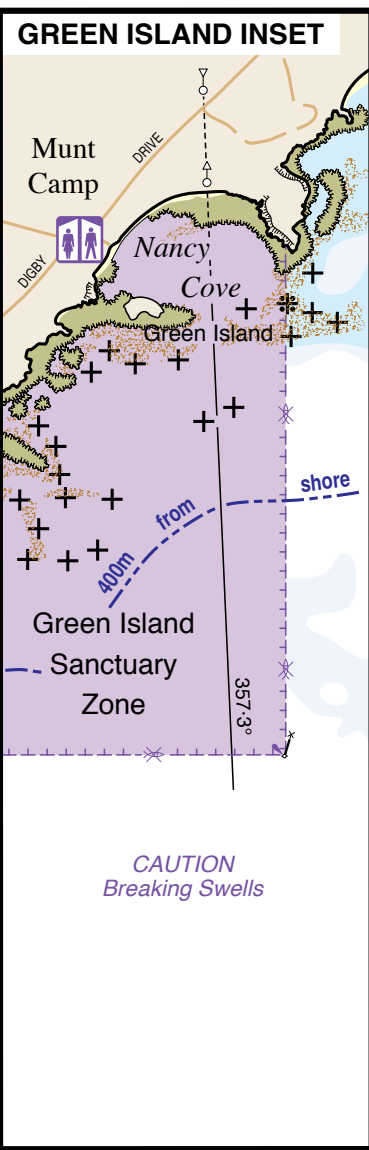
- LEGEND**
- 5 Knots Speed Limit
  - 8 Knots for vessels over 24m only
  - Closed Waters - Motorised Vessels
  - Swimming Prohibited
  - Marine Sanctuary
  - 400m From Shore
  - Marine Reserve
  - Rock, Rock awash
  - Boat Ramp, Public Toilet
  - Watering Point, Wreck



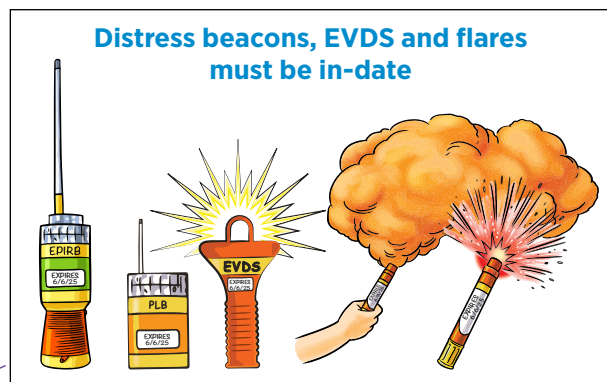
ROCKY BAY INSET



GREEN ISLAND INSET



**Remember to LOG ON, LOG OFF! every trip**  
with the local Marine Rescue group



**Distress beacons (in-date)**  
EPIRB (AS/NZS 4280.1) or PLB (AS/NZS 4280.2)  
Distress beacons must be in-date and registered with Australian Maritime Safety Authority (AMSA).  
When operating more than 400 metres from shore in unprotected waters you must carry a GPS enabled EPIRB or PLB worn by a person on board.  
For further information visit our website or call 13 11 56.