

# Boating Guide South Metropolitan Marine Safety



YOU'RE THE SKIPPER  
YOU'RE RESPONSIBLE

August 2023 - R2

## SAFETY EQUIPMENT REQUIREMENTS



REGISTRABLE VESSELS Including sailing vessels that are or can be propelled by mechanical power.		
PROTECTED WATERS Includes rivers, lakes, estuaries, harbours and waters within 400 metres from the shore in unprotected waters but excludes Cambridge Gulf and Lake Argyle.	UNPROTECTED WATERS Beyond 400 metres from the shore.	
<b>Recreational Skipper's Ticket</b> The skipper of a recreational vessel, powered by a motor greater than 6 horsepower must hold an RST.		
<b>Lifejacket Carriage</b> A lifejacket, as indicated in the table opposite, must be carried for every person on board.	Vessels smaller than 4.8m Minimum Level 100 MUST BE CARRIED	Vessels 4.8m and larger Minimum Level 100 MUST BE CARRIED
<b>Lifejacket Wearing</b> As indicated in the table opposite.	Children older than one and younger than 12 Minimum Level 100 MUST BE CARRIED	Personal Water Craft Minimum Level 50S MUST BE WORN
<b>Distress Beacon (in-date)</b> A GPS enabled 406 MHz EPIRB OR If worn by at least one person, a GPS enabled PLB. Distress beacons must be in-date and registered with AMSA.		
<b>Red and Orange Flares (in-date)</b> At least two hand held red flares and two hand held orange flares must be carried. OR <b>Electronic Visual Distress Signal (EVDs)</b> An electronic signalling device may be carried in lieu of flares IF a GPS enabled EPIRB or PLB (must be worn) is also carried.		
<b>Marine Radio</b> A VHF or HF marine radio on any Registrable Vessel when operating more than 4 nautical miles from shore in unprotected waters.		
<b>Recommended Additional Safety Equipment</b> It is recommended an anchor and line, a fire extinguisher and a means of removing water be carried.		

### Contact details

Department of Transport

Email: [Ed.Boat@transport.wa.gov.au](mailto:Ed.Boat@transport.wa.gov.au)

Website: [www.transport.wa.gov.au/marine](http://www.transport.wa.gov.au/marine)

Marine Safety Hotline: 13 11 56

### Police

Emergency: 000

Water Police: 9442 8600

Department of Fire and Emergency Services

Marine Rescue Western Australia

Emergency contact: VHF 16

Marine Rescue Rockingham

Marine Rescue Cockburn

Marine Rescue Fremantle

### Boating Weather Forecasts

Boating weather: 1300 815 916

Website: [www.bom.gov.au](http://www.bom.gov.au)

Department of Primary Industry and Regional Development

Fishwatch: 1800 815 507

Website: [www.dpir.wa.gov.au](http://www.dpir.wa.gov.au)

Department of Biodiversity, Conservation and Attractions

Website: [www.dbca.wa.gov.au](http://www.dbca.wa.gov.au)

**Boating in WA just got smarter.**  
Download the free Deckee app.

**anywhere, anytime!**  
Save time and go online today

Join us at  
[facebook.com/MarineSafetyWA](https://facebook.com/MarineSafetyWA)

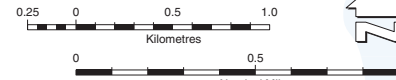
For further information go to  
[www.transport.wa.gov.au/boatingguides](http://www.transport.wa.gov.au/boatingguides)  
or scan the QR Code

The information contained in this publication is provided in good faith and believed to be accurate at time of publication. The State shall in no way be liable for any loss sustained or incurred by anyone relying on the information. 16-24-02-SER-0724-WEB-S1



### ROCKINGHAM WATERS

NOT TO BE USED FOR NAVIGATION  
For more detailed information refer to:  
Department of Transport Nautical Charts  
Cape Peron to Doreville WA 6013  
Waters 5042 227  
Ocean Reef to Cape Peron WA 6001



#### Legend

- 5 Knot Speed Restricted Area
- 8 Knot Speed Restricted Area
- Mooring Area (8 Knots)
- PWC Freestyle Area
- Water Ski Area
- Closed Waters - All Vessels
- Closed Waters - Motorised Vessels
- Swimming Prohibited area
- GPS Validation Point / Launching Ramp
- Over-beach Launching / Canoe Launching
- Toilet / Parking
- Courtesy Moorings, Rock Awash

#### Shoalwater Islands Marine Park

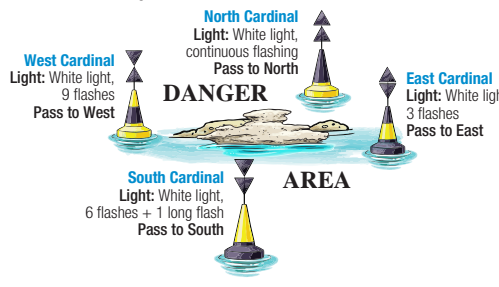
The Shoalwater Islands Marine Park extends from just south of Becher Point to the Garden Island Causeway and extends up to 3 nautical miles offshore. Penguin Island is a conservation park for day visitors only. All of the other rocks and islands are nature reserves and visitation is prohibited.

Three Sanctuary and two Special Purpose zones exist within the marine park. These zones provide representation of major marine habitats as well as the flora and fauna associated with them and provide protection of unique features of the region's marine environment.

These zones provide areas free of extractive activities and passive recreation, nature based tourism and nature observation.

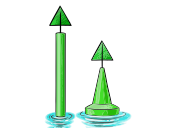
#### Cardinal marks

Used to indicate that deeper water lies in a compass direction away from a danger area such as a reef, shallow areas, etc.



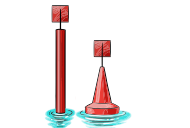
#### Starboard Marks

Light: Green, any rhythm



#### Port Marks

Light: Red, any rhythm



#### Isolated Danger Marks

Indicates an area of isolated danger

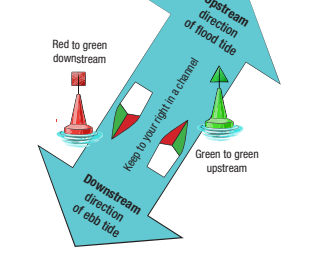
Light: White, group of 2 flashes



#### Special Marks

Used to indicate special areas such as traffic separation schemes, aquaculture sites etc.

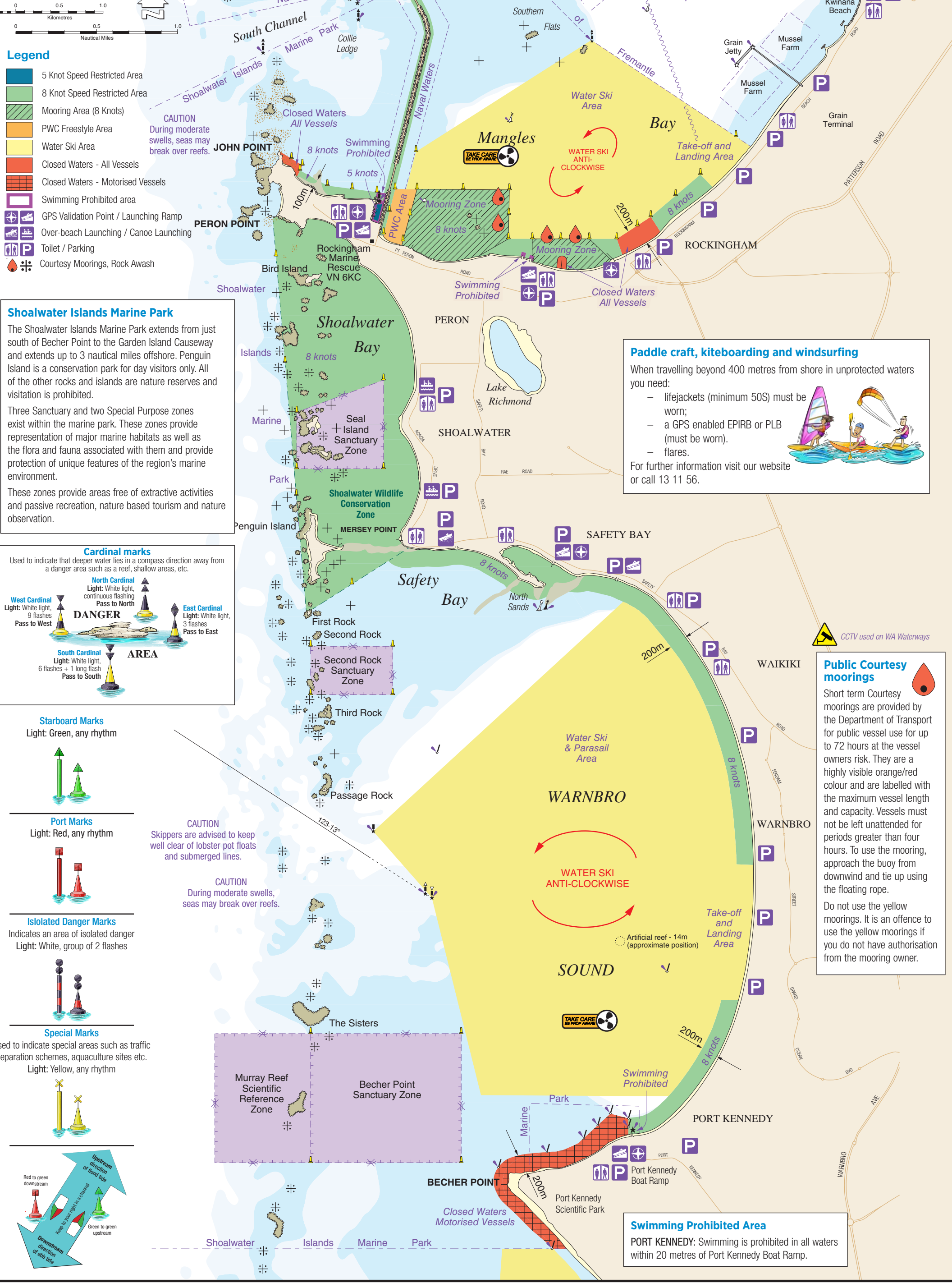
Light: Yellow, any rhythm



### COCKBURN

#### SOUND

Note: Unprotected waters



#### Paddle craft, kiteboarding and windsurfing

When travelling beyond 400 metres from shore in unprotected waters you need:

- lifejackets (minimum 50S) must be worn;
- a GPS enabled EPIRB or PLB (must be worn).
- flares.

For further information visit our website or call 13 11 56.

CCTV used on WA Waterways

#### Public Courtesy moorings

Short term Courtesy moorings are provided by the Department of Transport for public vessel use for up to 72 hours at the vessel owners risk. They are a highly visible orange/red colour and are labelled with the maximum vessel length and capacity. Vessels must not be left unattended for periods greater than four hours. To use the mooring, approach the buoy from downwind and tie up using the floating rope.

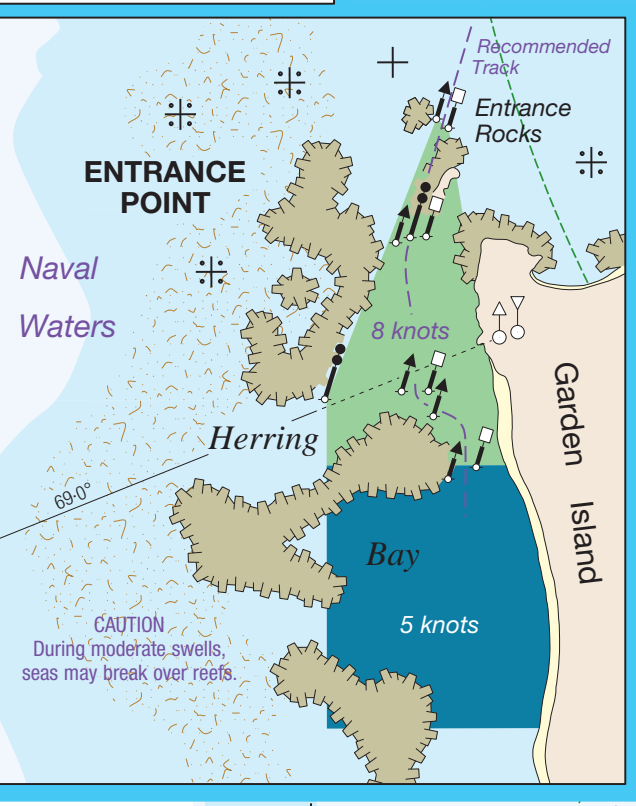
Do not use the yellow moorings. It is an offence to use the yellow moorings if you do not have authorisation from the mooring owner.

#### Swimming Prohibited Area

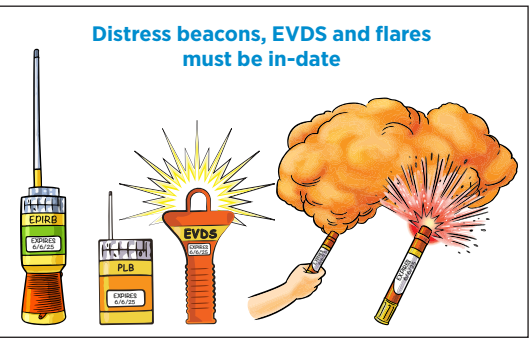
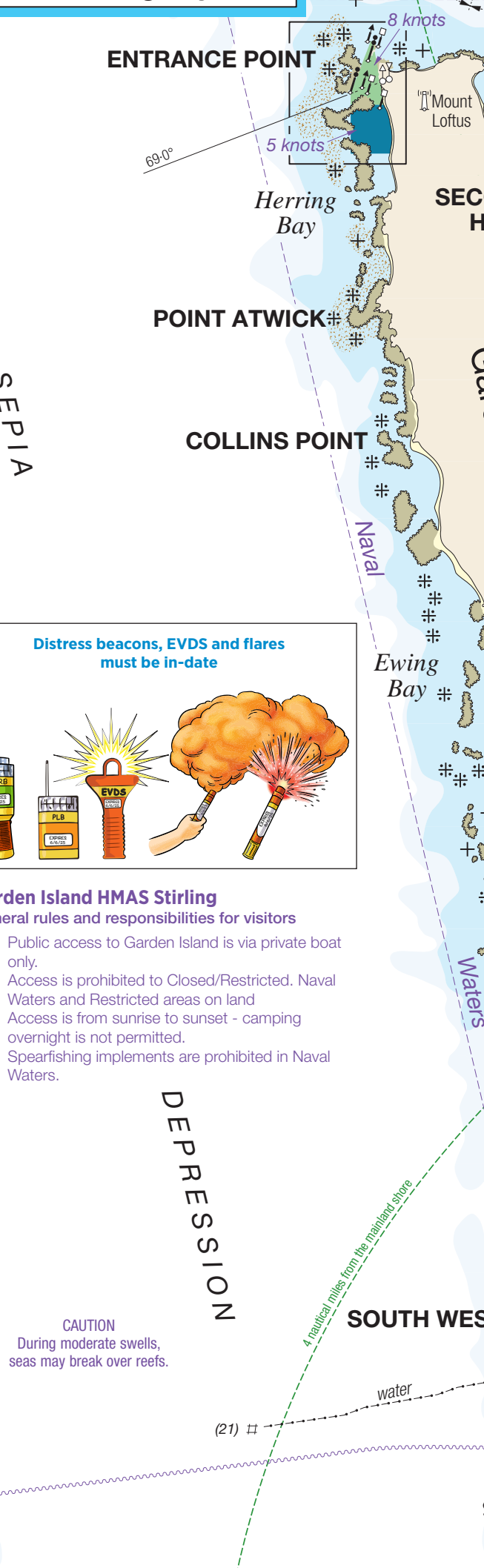
PORT KENNEDY: Swimming is prohibited in all waters within 20 metres of Port Kennedy Boat Ramp.



## Herring Bay Inset



## See Herring Bay Inset

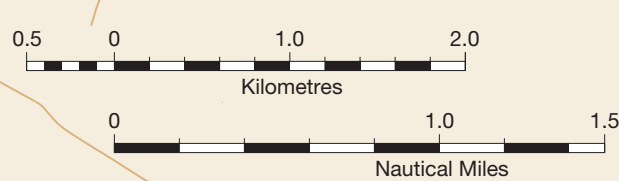


- Garden Island HMAS Stirling**  
General rules and responsibilities for visitors
- Public access to Garden Island is via private boat only.
  - Access is prohibited to Closed/Restricted, Naval Waters and Restricted areas on land
  - Access is from sunrise to sunset - camping overnight is not permitted.
  - Speargfishing implements are prohibited in Naval Waters.

LIGHT SYMBOLS	
NAVIGATION MARKS	CARDINAL MARKS
Lighthouse, major, minor light	Indicates safe water to the North
Beacon, port, starboard	Indicates safe water to the South
Safe water, isolated danger	Indicates safe water to the East
Spar buoy, port, starboard	Indicates safe water to the West
Pillar buoy, port, starboard	
Mooring buoy, yachting buoy	
Lead, front, rear	

## ROCKINGHAM WATERS

NOT TO BE USED FOR NAVIGATION  
For more detailed information refer to:  
Department of Transport Nautical Charts  
Cape Peron to Davesville WA 913  
Warbro DMH 227  
Ocean Reef to Cape Peron WA 001



### Legend

- 5 Knot Speed Restricted Area
- 8 Knot Speed Restricted Area
- Mooring Area (8 Knots)
- PWC Freestyle Area
- Water Ski Area
- Closed Waters - All Vessels
- Closed Waters - Motorised Vessels
- Swimming Prohibited area
- GPS Validation Point / Launching Ramp
- Over-beach Launching / Canoe Launching
- Toilet / Parking
- Courtesy Moorings, Rock Awash



CCTV used on WA Waterways

### Obstruction of channels and leading lines

Cray pots, drop nets, fishing nets, marker buoys or other buoyed objects can not be placed or allowed to remain in any channel or fairway in any port or harbour, or in any channel, fairway or passage in any navigable waters except by permission of DoT. You also can't anchor or moor a vessel in any channel or fairway, unless the vessel is in distress.

### Water skiing

Water skiing involves being towed over water at a speed of 8 knots or more by a motor boat.

It takes at least three people to go water skiing:

- A driver of at least 17 years of age with a Recreational Skipper's Ticket.
- An observer of at least 14 years of age.
- A person being towed.



Vessels taking off with skiers always give way to vessels landing a skier.

Beach take-off and landings are only permitted in the designated take-off and landing areas.

Skiing is only permitted between the hours of sunrise to sunset, unless otherwise indicated.

For further information visit our website or call 13 11 56.

### Recreational Skipper's Ticket

The person in charge of a recreational vessel with a motor of **6 horsepower or less** is not required to hold a Recreational Skippers Ticket (RST).

The skipper in charge of a recreational vessel with a motor **greater than 6 horsepower** is required to hold an RST and carry it when boating.

### Age restrictions

A person under 10 years may not drive a motor boat.

RST holders over 14 but under 16 years of age are restricted to operating during daylight hours at a speed less than 8 knots.

### Personal water craft (PWC)

Every skipper of a PWC must hold an RST. A skipper who is older than 14 but under 16 years of age with an RST can only operate a PWC during daylight hours at a maximum speed of 8 knots.

- Every person on board a PWC must wear a lifejacket (minimum 50S) at all times.
- When travelling beyond 400 metres from shore in unprotected waters you need:
  - a GPS enabled EPIRB or PLB (must be worn).
  - flares or electronic visual distress signal device.
- Beyond 4 nautical miles from shore in unprotected waters a marine radio must also be carried.

For further information visit our website or call 13 11 56.



Cross channels only when safe to do so  
If unsure, contact the Fremantle Port on VHF Channel 16 for advice

A ship's blind spot can extend for hundreds of metres.

### Basic rules of the waterways

- Vessel Overtaking Another**  
Every overtaking vessel gives way (this includes sailing vessels)
- Power Vessels Meeting Head On**  
Each vessel alters course to starboard (right)
- Power Vessels Meeting**  
Give way to vessels on your starboard (right)
- Power Meeting Sailing Vessel**  
Power gives way to sail except when sailing vessel is overtaking
- Ships in Channels**  
All vessels must keep clear of ships using or approaching the marked navigation channel ships.