

## Boating Guide Walpole to Denmark Marine Safety




YOU'RE THE SKIPPER  
YOU'RE RESPONSIBLE

August 2023

## SAFETY EQUIPMENT REQUIREMENTS



 <b>Recreational Skipper's Ticket</b> The skipper of a recreational vessel, powered by a motor greater than 6 horsepower must hold an RST.	✓	✓
 <b>Lifejacket Carriage</b> A lifejacket, as indicated in the table opposite, must be carried for every person on board.	Vessels smaller than 4.8m ✓ Minimum Level 100 <b>MUST BE CARRIED</b>	Vessels 4.8m and larger ✓ Minimum Level 100 <b>MUST BE CARRIED</b>
	Children older than one and younger than 12 ✓ Minimum Level 100 <b>MUST BE CARRIED</b>	Children older than one and younger than 12 ✓ Minimum Level 100 <b>MUST BE CARRIED</b>
 <b>Lifejacket Wearing</b> As indicated in the table opposite.	Personal Water Craft ✓ Minimum Level 50S <b>MUST BE WORN</b>	Personal Water Craft ✓ Minimum Level 50S <b>MUST BE WORN</b>
	 <b>Distress Beacon (in-date)</b> A GPS enabled 406 MHz EPIRB <b>OR</b> if worn by at least one person, a GPS enabled PLB. Distress beacons must be in-date and registered with AMSA.	<b>RECOMMENDED</b>
 <b>Red and Orange Flares (in-date)</b> At least two hand held red flares and two hand held orange flares must be carried. <b>OR</b>  <b>Electronic Visual Distress Signal</b> An electronic signalling device may be carried in lieu of flares IF a GPS enabled EPIRB or PLB (must be worn) is also carried.	<b>RECOMMENDED</b>	✓
	 <b>Marine Radio</b> A HF or VHF marine radio on any Registrable Vessel when operating more than 4 nautical miles from shore in unprotected waters.	<b>RECOMMENDED</b>
 <b>Recommended Additional Safety Equipment</b> It is recommended an anchor and line, a fire extinguisher and a means of removing water be carried.	<b>RECOMMENDED</b>	<b>RECOMMENDED</b>

SERM-OLM0722-1

### Walpole to Denmark Boating Guide

The Walpole to Denmark Boating Guide covers an area along our south coast noted for large waves and unpredictable swell. Skippers need to prepare for all voyages by checking the weather and ensuring they log on.

#### Ocean entrances

Siltation problems at the ocean entrances cause very dangerous conditions for boaters, with bars forming. Don't risk crossing a bar unless you have local knowledge, experience and the right kind of boat. Wear a lifejacket while crossing a bar in any boat at any time.

#### Recreational Skipper's Ticket (RST)

The person in charge of a recreational vessel with a motor of **6hp or less** is not required to hold a Recreational Skipper's Ticket (RST).

A person in charge of a recreational vessel with a motor **greater than 6hp** is required to hold an RST. You are required to carry your RST card with you when boating.

#### Age restrictions

A person under 10 years may not drive a motor boat. RST holders over 14 but under 16 years of age are restricted to operating during daylight hours at a speed less than 8 knots.

#### Interstate skipper's tickets

If you hold a valid/current interstate ticket, recognised by DoT and you enter, as a visitor or with the intention of permanently residing in Western Australia, you have three months to have the qualification recognised.

For further information visit our website or call 13 11 56.

#### General speed limit restrictions

It is illegal, in any navigable waters to drive a motor boat at a speed exceeding eight knots, water ski or para-sail:

- through an arch of a bridge;
- in or through a mooring area;
- within 15 metres of a vessel underway;
- within 50 metres of -
  - (i) a moored vessel;
  - (ii) a person in the water;
  - (iii) a jetty or wharf;
  - (iv) a river bank or low water mark.

### Personal water craft (PWC)

Every skipper of a PWC must hold an RST. A skipper who is older than 14 but under 16 years of age with an RST can only operate a PWC during daylight hours at a maximum speed of 8 knots.

- Every person on board a PWC must wear a lifejacket (minimum 50S) at all times.
- When travelling beyond 400 metres from shore in unprotected waters you need:
  - a GPS enabled EPIRB or PLB (must be worn); and
  - flares or electronic visual distress signal device.
- Beyond 4 nautical miles from shore in unprotected waters a marine radio must also be carried.

PWC may operate when towing a water skier. When towing a water skier all vessels are required to carry an observer of at least 14 years of age. Observers must also wear a lifejacket.

PWC not engaged in water skiing must at all times remain well clear of the take-off and landing area and any vessels engaged in water skiing.

For further information visit our website or call 13 11 56

#### Paddle Craft

Recreational canoes, kayaks, surf skis, wave skis, inflatables or similar paddle craft must comply with WA marine laws including carriage of safety equipment.

When travelling beyond 400 metres from shore in unprotected waters you need:

- lifejackets (minimum 50S) (must be worn);
- a GPS enabled EPIRB or PLB (must be worn); and
- flares.

For further information visit our website or call 13 11 56.



### Contact details

#### Department of Transport

Email: [Ed.Boat@transport.wa.gov.au](mailto:Ed.Boat@transport.wa.gov.au)  
Website: [www.transport.wa.gov.au/imate](http://www.transport.wa.gov.au/imate)  
Albany Office: 9216 8520  
Marine Safety Hotline: 13 11 56

#### Police

Emergency: 000  
Water Police: 9442 8600  
Denmark Police: 9848 0500  
Walpole Police: 9840 1618

#### Department of Fire and Emergency Services

Marine Rescue Western Australia  
Emergency contact: VHF 16  
Marine Rescue Walpole  
Marine Rescue Denmark

#### Boating Weather Forecasts

Boating weather: 1300 815 916  
Website: [www.bom.gov.au](http://www.bom.gov.au)

#### Department of Primary Industry and Regional Development

Fishwatch: 1800 815 507  
Website: [www.dpird.wa.gov.au](http://www.dpird.wa.gov.au)


#### Department of Biodiversity, Conservation and Attractions

Website: [www.dbca.wa.gov.au](http://www.dbca.wa.gov.au)

 **Boating in WA just got smarter.**  
Download the free Deckee app.

 **anywhere, anytime!**  
Save time and go online today

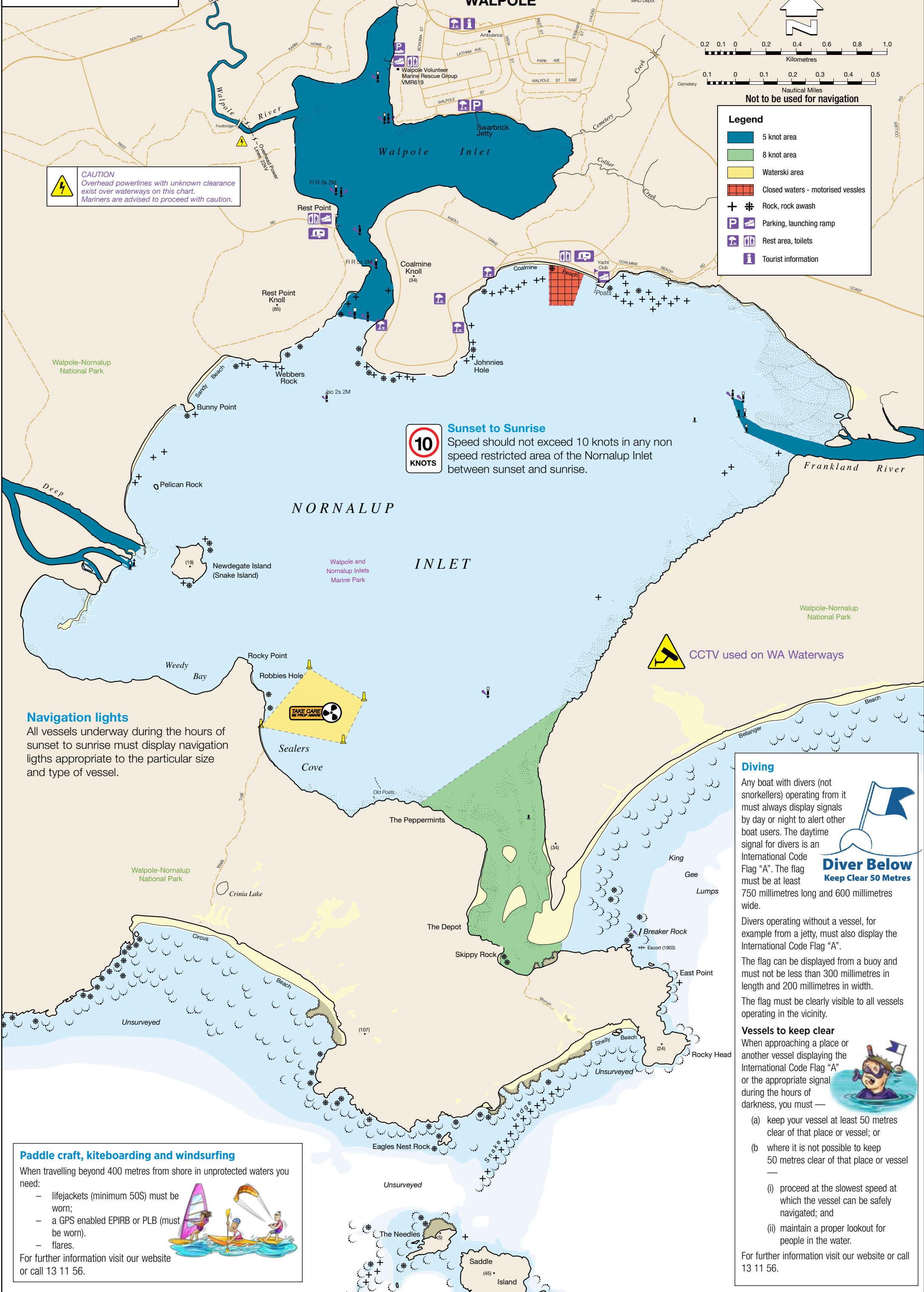
 Join us at  
[facebook.com/MarineSafetyWA](https://facebook.com/MarineSafetyWA)

 For further information go to  
[www.transport.wa.gov.au/boatingguides](http://www.transport.wa.gov.au/boatingguides)  
or scan the QR Code

The information contained in this publication is provided in good faith and believed to be accurate at time of publication. The State shall in no way be liable for any loss sustained or incurred by anyone relying on the information. 16-26-02-SER-0523-WEB-S1

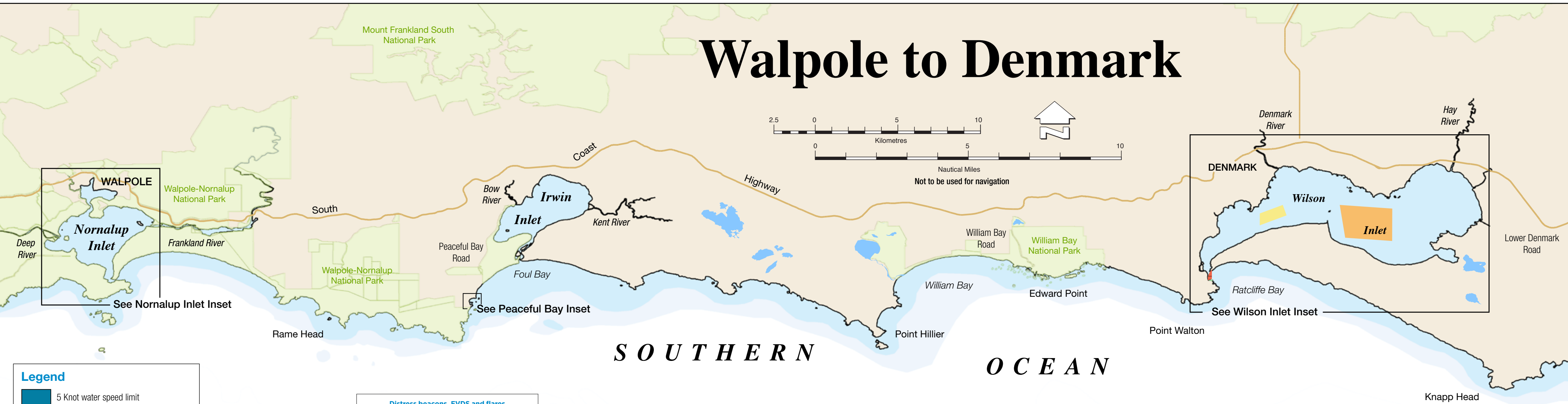


## NORNALUP INLET





# Walpole to Denmark



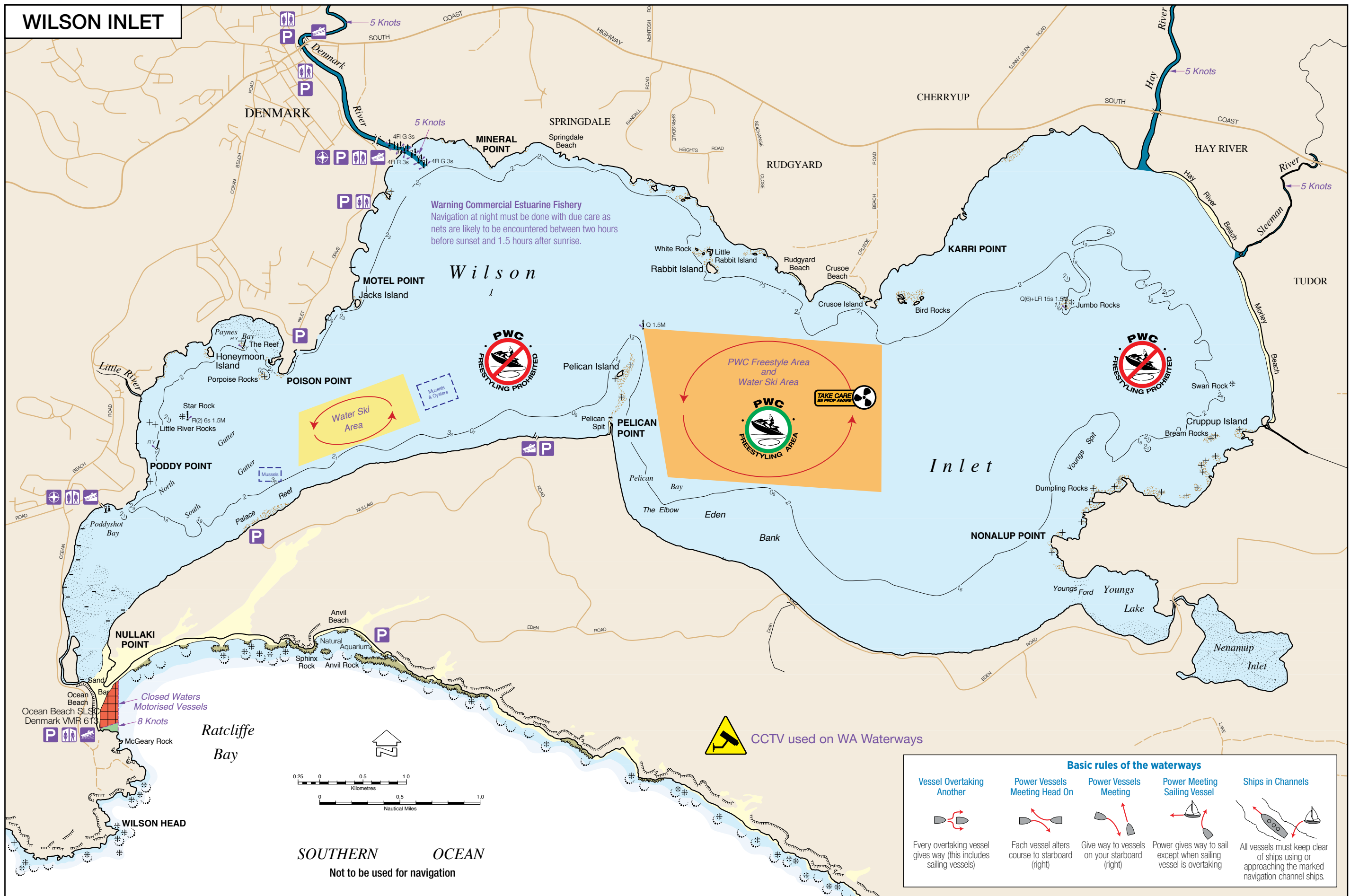
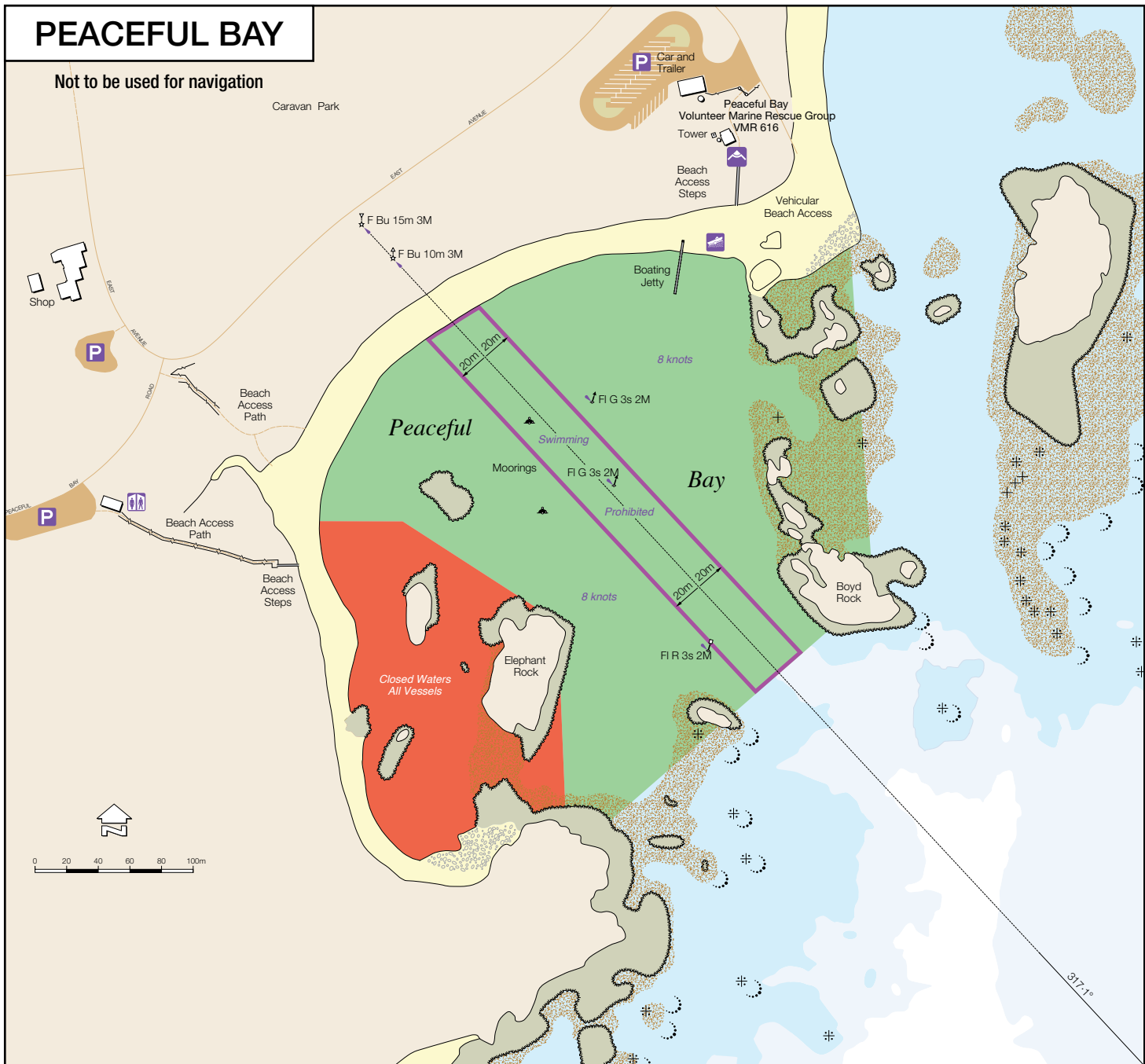
**Legend**

- 5 Knot water speed limit
- 8 Knot water speed limit
- Waterski area
- PWC and waterski area
- Closed waters - all vessels
- Closed waters - motorised vessels
- Rock, rock awash
- Sealed Ramp, unsealed ramp
- GPS Validation marker, coast camera
- Toilet, parking area

**Remember to LOG ON, LOG OFF! every trip**  
with the local Marine Rescue group

**Distress beacons, EVDS and flares must be in-date**

**Coast Cameras**  
Coast Cameras provide boaters and other aquatic users with near live images of the current weather and ocean conditions at selected locations along the coast.  
The images are updated every minute and displayed on our website: [www.transport.wa.gov.au/coast-cams](http://www.transport.wa.gov.au/coast-cams)



**Basic rules of the waterways**

- Vessel Overtaking Another**  
Every overtaking vessel gives way (this includes sailing vessels)
- Power Vessels Meeting Head On**  
Each vessel alters course to starboard (right)
- Power Vessels Meeting**  
Give way to vessels on your starboard (right)
- Power Meeting Sailing Vessel**  
Power gives way to sail except when sailing vessel is overtaking
- Ships in Channels**  
All vessels must keep clear of ships using or approaching the marked navigation channel ships.