



Department of
Transport

Maritime Facilities 2022-23 Fees and Charges

Effective from 1 July 2022
Version 1 – 26 April 2022



Contents

General notes	3
Jetty and mooring area licence fees	5
Ferry licence fees	5
Statewide fees	6
Maritime Facilities	
Albany (Emu Point) Maritime Facility - <i>Fees and Vessel Accommodation Plan</i>	8
Albany Waterfront Marina - <i>Fees and Vessel Accommodation Plan</i>	9
Augusta Boat Harbour - <i>Fees and Vessel Accommodation Plan</i>	10
Bremer Bay Maritime Facility - <i>Fees and Vessel Accommodation Plan</i>	11
Bunbury (Casuarina) Boat Harbour - <i>Fees and Vessel Accommodation Plan</i>	12
Carnarvon Boat Harbour - <i>Fees and Vessel Accommodation Plan</i>	13
Cervantes Maritime Facility - <i>Fees and Vessel Accommodation Plan</i>	14
Coral Bay Maritime Facility - <i>Fees and Vessel Accommodation Plan</i>	15
Denham Maritime Facility - <i>Fees and Vessel Accommodation Plan</i>	16
Esperance (Bandy Creek) Boat Harbour - <i>Fees and Vessel Accommodation Plan</i>	17
Exmouth Boat Harbour - <i>Fees</i>	18
Exmouth Boat Harbour - <i>Vessel Accommodation Plan</i>	19
Fremantle Fishing Boat Harbour - <i>Fees</i>	20
Fremantle Fishing Boat Harbour - <i>Vessel Accommodation Plan</i>	21
Fremantle (Challenger) Boat Harbour - <i>Fees and Vessel Accommodation Plan</i>	22
Geraldton (Batavia Coast) Marina - <i>Fees and Vessel Accommodation Plan</i>	23
Green Head Maritime Facility - <i>Fees and Vessel Accommodation Plan</i>	24
Hillarys Boat Harbour - <i>Fees and Vessel Accommodation Plan</i>	25
Hopetoun Maritime Facility - <i>Fees and Vessel Accommodation Plan</i>	26
Jervoise Bay Boat Harbour - <i>Fees and Vessel Accommodation Plan</i>	27
Jurien Boat Harbour - <i>Fees and Vessel Accommodation Plan</i>	28
Kalbarri Maritime Facility - <i>Fees and Vessel Accommodation Plan</i>	29
Lancelin Maritime Facility - <i>Fees and Vessel Accommodation Plan</i>	30
Leeman Maritime Facility - <i>Fees and Vessel Accommodation Plan</i>	31
Onslow (Beadon Creek) Maritime Facility - <i>Fees</i>	32
Onslow (Beadon Creek) Maritime Facility - <i>Vessel Accommodation Plan</i>	33
Point Samson (Johns Creek) Boat Harbour - <i>Fees</i>	34
Point Samson (Johns Creek) Boat Harbour - <i>Vessel Accommodation Plan</i>	35
Port Denison Boat Harbour - <i>Fees and Vessel Accommodation Plan</i>	36
Port Gregory Maritime Facility - <i>Fees and Vessel Accommodation Plan</i>	37
Swan Canning Rivers (inc Barrack Street, Mends Street and Burswood Jetties) - <i>Fees</i>	38
Swan Canning Rivers (inc Barrack Street, Mends Street and Burswood Jetties) - <i>Vessel Accommodation Plan</i>	39
Two Rocks Marina - <i>Fees and Vessel Accommodation Plan</i>	40
Fuel Wharfage	41
Maritime facilities managed by DoT (map)	42
Swan Canning Rivers (map)	43

Cover photograph: Augusta Boat Harbour

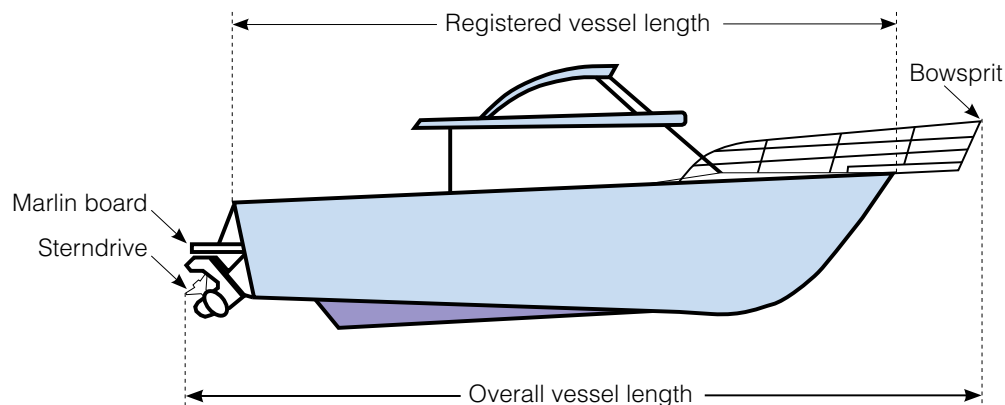
General notes

1. General notes

Vessel owner and skipper jointly liable for all fees and charges

All fees payable in advance

For charge calculation purposes, vessel length refers to the overall vessel length, including marlin board, sterndrive, bowsprit etc; rounded down to the nearest whole metre



The fee for any service or use of facilities not contemplated or provided for in the agreed fee schedule for a particular location shall be charged at cost

“At cost” means the full cost of a service, taking into account the direct and indirect costs. Direct costs are costs that can be attributed directly and unequivocally to a service, including direct staffing costs, as well as expenses incurred specifically for that service or product etc. Indirect costs are costs that are not directly attributable to a particular service - sometimes referred to as overheads or corporate costs - and can include costs associated with financial services, human resources, information technology etc

2. Vessel accommodation

Where annual fees have been paid for a particular facility, use of another facility may be temporarily allocated for the convenience of harbour operators, without fee adjustment

Harbour management may temporarily allocate a vessel to a larger pen in order to optimise the use of available pens. The fees charged will be the same as the prescribed fee due had the vessel been accommodated in an appropriately sized pen

3. Period definitions

Short-term means: Up to 1 hour in any 24 hour period (see note 5 overleaf for further details)

Pay 6 hours or part thereof means: Charged per 6 hour block

Day means: A period of 24 consecutive hours or part thereof

Week means: A period of 7 consecutive days or part thereof

Month means: A calendar month or part thereof – ie: from a specified time/date in one month to the same time/date in the next month

Annual/Year means: A period of 12 consecutive months or part thereof

4. Vessel type definitions

Recreational vessel: Means a vessel held wholly for the purpose of recreational or sporting activities and not for hire or reward

Commercial vessel: Means a vessel which is not used solely for pleasure or recreation and is used in the course of any business or in connection with any commercial transaction (excludes service vessels at Exmouth, Onslow and Point Samson)

Tourism vessel: Means a vessel used for commercial tourism purposes

General notes (cont)

4. Vessel type definitions (cont)

Fishing vessel: Means a vessel used for catching fish or other living resources of the sea or seabed for trading or manufacturing purposes, but excludes any vessel engaged in harvesting or transportation of algae or aquatic plants

Service vessel: Means a vessel used in the course of any business not associated with fishing or tourism and excludes Government vessels. Fees pertaining to service vessels apply at Exmouth, Onslow and Point Samson.

Government vessel: Means a vessel that belongs to, or is vested in, the Commonwealth or a State or Territory of the Commonwealth

5. Use of a service jetty or wharf

A daily fee of \$8.00 per metre of the vessel length for the use of a service jetty or wharf will apply for commercial vessels (excluding service vessels at Exmouth, Onslow and Point Samson)

An annual fee of \$91.40 per metre of the vessel length for the short-term use of a service jetty or wharf will apply for any vessel, whether commercial or recreational, but excluding service vessels at Exmouth, Onslow and Point Samson

If an annual fee for use of the service jetty or wharf has been paid, then no further charges will apply for the use of any service jetty or wharf for up to 1 hour in any 24 hour period, subject to availability, at any DoT managed maritime facility within the State for the duration of the period for which the annual vessel accommodation fee has been paid*

If a vessel accommodation fee (includes pen, alongside berth or mooring fee, but excludes Marine Safety mooring fees) has been paid by any vessel (excluding service vessels at Exmouth, Onslow and Point Samson), then use of the service jetty or wharf within that maritime facility, subject to availability, is free for up to 1 hour in any 24 hour period; for the duration of the period for which the vessel accommodation fee has been paid*

If an annual vessel accommodation fee has been paid by any vessel (excluding service vessels at Exmouth, Onslow and Point Samson) then use of a service jetty or wharf at any DoT managed maritime facility within the State, subject to availability, is free for up to 1 hour in any 24 hour period, for the duration of the period for which the vessel accommodation fee has been paid*

If an annual vessel accommodation fee or an annual service jetty/wharf fee has been paid by any vessel (excluding service vessels at Exmouth, Onslow and Point Samson), but that vessel wishes to use the service jetty or wharf for longer than the included 1 hour in any 24 hour period, then a daily fee, as appropriate for that vessel, will apply

Fishing vessels: The 1 hour limit for short-term use of a service wharf or jetty may be extended for a licensed fishing vessel if required to complete active loading or unloading operations, subject to the vessel vacating the berth to facilitate other operations if required by an Officer of the Department or an Authorised Person and subject to the extended period only applying if active loading or unloading operations are continuously in progress

If a vessel accommodation fee has not been paid then the following fees will apply for the use of a service jetty or wharf, subject to availability, for any purpose other than fuelling*:

- Daily fee for a recreational vessel of \$57.00
- Daily fee for a commercial vessel (excluding service vessels) of \$8.00 per metre of the vessel's length
- Annual fee for short-term use of a service jetty or wharf by any vessel (excluding service vessels) of \$91.40 per metre of the vessel's length

*In the Swan Canning Rivers a vessel must not stay alongside any service jetty or wharf for a period greater than 15 minutes at a time. On event days at Burswood Jetty vessels may be required to move on more quickly to facilitate efficient use of the jetty and reduce unnecessary waiting times for other jetty users

*Where a berth is marked for exclusive use by vessels of a specified user at Burswood Jetty, no other vessel is permitted to use the berth at the times specified

If a vessel accommodation fee of 3 months or more has been paid at Fremantle Fishing Boat Harbour or Fremantle Challenger Boat Harbour then that vessel is entitled to use any DoT managed jetty in the Swan Canning Rivers (see page 38) for up to 15 minutes at a time for the period of the vessel accommodation, excluding event days at Burswood Jetty, when vessels may need to move on more quickly

If a vessel is refuelling then there is no vessel accommodation charge for use of the associated service jetty or wharf, while refuelling and simultaneous loading/unloading operations (if applicable) are continuously in progress. If a vessel wishes to remain at the service jetty after refuelling and simultaneous loading/unloading operations are complete, then an appropriate accommodation fee will be applied

Jetty, mooring area and ferry licence fees

JETTY LICENCE FEES

Jetties Act 1926 - Section 7

Note: All fees listed are GST free, unless otherwise stated

		2022-23		
		New licence fee	Annual licence fee	Licence transfer fee
For a privately owned jetty or jetties used solely for purposes not associated with commercial activity or use				
1	A boat ramp wholly on private property and not in water	\$ 145.90	\$ 49.30	\$ 145.90
2	A jetty (other than for boat ramps under Item 1)	\$ 657.40	\$ 150.15	\$ 424.90
For a jetty under shared private ownership and used solely for purposes not associated with commercial activity or use				
3	Fee payable per applicant	\$ 584.95	\$ 75.20	\$ 424.90
For a jetty owned by a Local Government Authority and provided for community use without charge				
4		\$ 98.45	\$ 43.70	\$ 98.45
For a jetty or jetties used in association with commercial activity or use				
5	A jetty or jetties accommodating: -			
	1-10 berths	\$ 1,386.60	\$ 760.95	\$ 1,036.20
	11-20 berths	\$ 2,032.10	\$ 1,140.80	\$ 1,036.20
	above 20 berths	\$ 2,679.90	\$ 1,521.05	\$ 1,036.20
For a fuel pipeline or fuel facility used in connection with a jetty owned by the Department				
6	Fee includes GST	\$ 1,525.25	\$ 837.05	\$ 1,138.80
Fee for replacement licence where modification has occurred to a previously approved jetty structure				
7	If modification is to a private or LGA jetty			\$ 141.65
	If modification is to a fuel pipeline on a jetty owned by the Dept (fee includes GST)			\$ 155.80

MOORING AREA LICENCE FEES

Western Australian Marine Act 1982 - Section 65

		New licence fee	Annual licence fee	Licence transfer fee
For a mooring area accommodating multiple vessels				
1		\$ 1,386.60	\$ 760.50	\$ 1,036.20

FERRY LICENCE FEES

Transport Coordination Act 1966 - Section 21(1)(d)

Ferry licence fee		
Per seat, per 12 months		\$ 2.85
To a maximum of		\$ 600.00

Note: vessels seating under 30 passengers are exempt

Statewide fees

		2022-23
		Inc GST
1	Live on board, per vessel, per month	
	For basic facility	\$ 51.60
	For enhanced facility (includes laundry)	\$ 157.20
	Guidance notes: Refer to 'Live on Board Policy'	
	1. 'Live on Board' fee applies to persons intending to live on board a vessel for more than 6 consecutive days or more than 10 days in any month.	
	2. The 'Live on Board' fee has GST applied at the concessional rate of 5.5%. Where the 'Live on Board' fee is charged, the corresponding pen fee will also have GST applied at 5.5%. Refer to Australian Tax Office public GST ruling: GSTR 2012/7 Goods and services tax: long-term accommodation in commercial residential premises.	
2	Electricity supply	
	metered	COST
3	Water supply	
	metered	COST
4.1	User installed and maintained swing (or fore/aft) moorings at Bremer Bay, Bunbury - Casuarina Boat Harbour, Carnarvon Boat Harbour, Exmouth Boat Harbour, Jurien Boat Harbour - Inner Harbour, Kalbarri Murchison River, Port of Onslow (includes Beadon Creek) and Port Denison - Inner Harbour Mooring Control Areas (unless otherwise specified on a location basis)	
	12 months paid in advance, per metre of the vessel length	\$ 129.00
	3 months or more per month paid in advance, per metre of the vessel length	\$ 11.75
	1 month paid in advance, per metre of the vessel length	\$ 19.35
	1 week or more per week paid in advance, per metre of the vessel length	\$ 5.80
	per day, per metre of the vessel length	\$ 2.60
4.2	Department of Transport installed and maintained swing (or fore/aft) moorings (unless otherwise specified on a location basis)	
	1 week or more per week paid in advance, per vessel	\$ 208.80
	per day, per vessel	\$ 36.90
5	Rubbish removal	
	Excess quantity from vessel not using harbour, or source other than vessel, per half skip supplied and emptied	COST
	Vessel waste oil in excess of 150 litres	COST
	Waste oil drum or container not removed by owner	COST
	Removal of rubbish not placed in supplied bins	COST
6	Cruise liner transfer vessel use of pen, berth, service jetty or wharf to load or unload passengers	
	per day, per metre of the vessel length	\$ 11.60
	plus, per passenger	\$ 4.80
7	General cargo at the service jetty or wharf or appurtenant area controlled by the Department	
	If loaded from or into vessel, per tonne or m ³	\$ 7.60
	If vessel is lifted to or from harbour, per metre of the vessel length, per lift	\$ 16.90
8	Use of service jetty or wharf	
	For use of service wharf/jetty hardstand or appurtenant area for storage or maintenance, per day per m ²	\$ 2.00

Statewide fees (cont)

		2022-23
		Inc GST
9	Recreational vessel use of service jetty or wharf, alongside berth, pen or pile mooring	
	per day	\$ 57.00
10	Commercial vessel use of alongside berth, pen or mooring (excludes service vessels at Exmouth, Onslow and Point Samson)	
	per day, per metre of the vessel length	\$ 8.00
11	Commercial vessel use of service jetty or wharf (excludes service vessels at Exmouth, Onslow and Point Samson)	
	per day, per metre of the vessel length	\$ 8.00
12	Short-term use of service jetty or wharf for any vessel (excludes service vessels at Exmouth, Onslow and Point Samson)	
	12 months paid in advance, per metre of the vessel length	\$ 91.40
13	Use of floating dinghy pen	
	12 months paid in advance, per vessel	\$ 413.10
14	Fuel wharfage fee	
	cents per litre	\$ 0.062
15	Calculation of vessel accommodation fee payment options	
	12 months paid in advance	100%
	3 months or more per month paid in advance	9.125% of 12 month fee*
	1 month paid in advance	15% of 12 month fee*
	1 week or more per week paid in advance	4.5% of 12 month fee*
16	Calculation of pen fees for over width vessels	
	When a specified CAT pen is available	150% of the fee for a standard pen of the same pen length*
	When a vessel requires two standard pens	100% of the fee for each of the two pens being utilised
	For a CAT at the head of a jetty or those fitting into a standard size pen	Same fee as a standard width vessel for that pen or berth
	Daily fee for an over width vessel using a CAT pen	Same daily fee applicable for a commercial or recreational vessel of the same length applied i.e. if a recreational CAT vessel, then \$57.00 per day, if a commercial CAT vessel, then \$8.00 per metre of the vessel length per day

* For administration purposes vessel accommodation fees are calculated using the percentage specified for the relevant payment option, rounded to 0 cents or 5 cents and allowing for whole GST cents where possible.

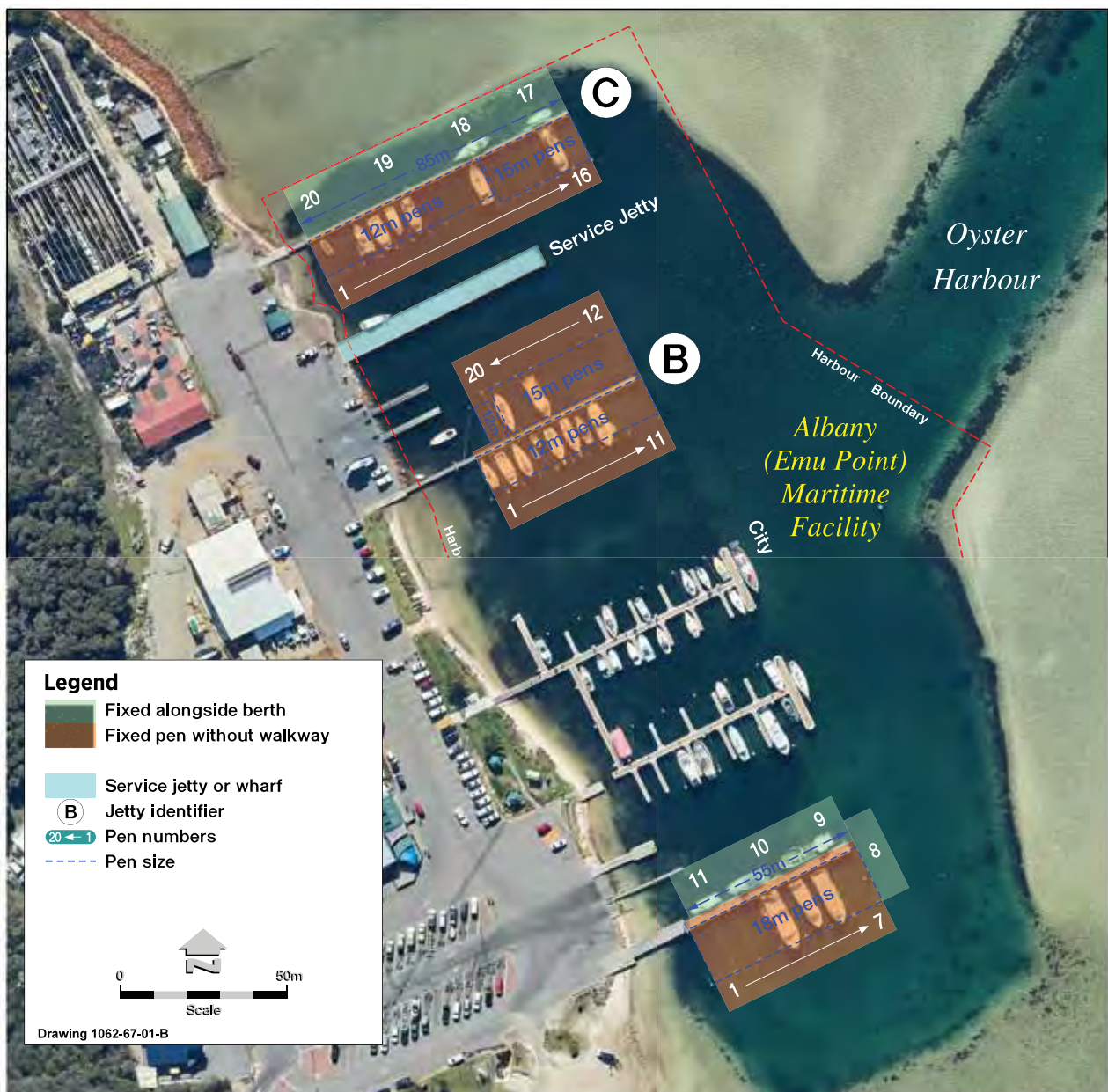
Albany (Emu Point) Maritime Facility

Vessel accommodation

	2022-23	
	Charged per metre of the pen length	Charged per metre of the vessel length
All fees quoted are inclusive of GST and should be paid in advance	Fixed pen without walkway	Fixed alongside berth
12 months	\$ 348.40	\$ 419.60
3 months or more per month	\$ 31.80	\$ 38.30
1 month	\$ 52.25	\$ 62.95
1 week	\$ 15.70	\$ 18.90

Guidance note: For other fees and charges not listed above please refer to Statewide fees

Vessel Accommodation Plan (Extract)



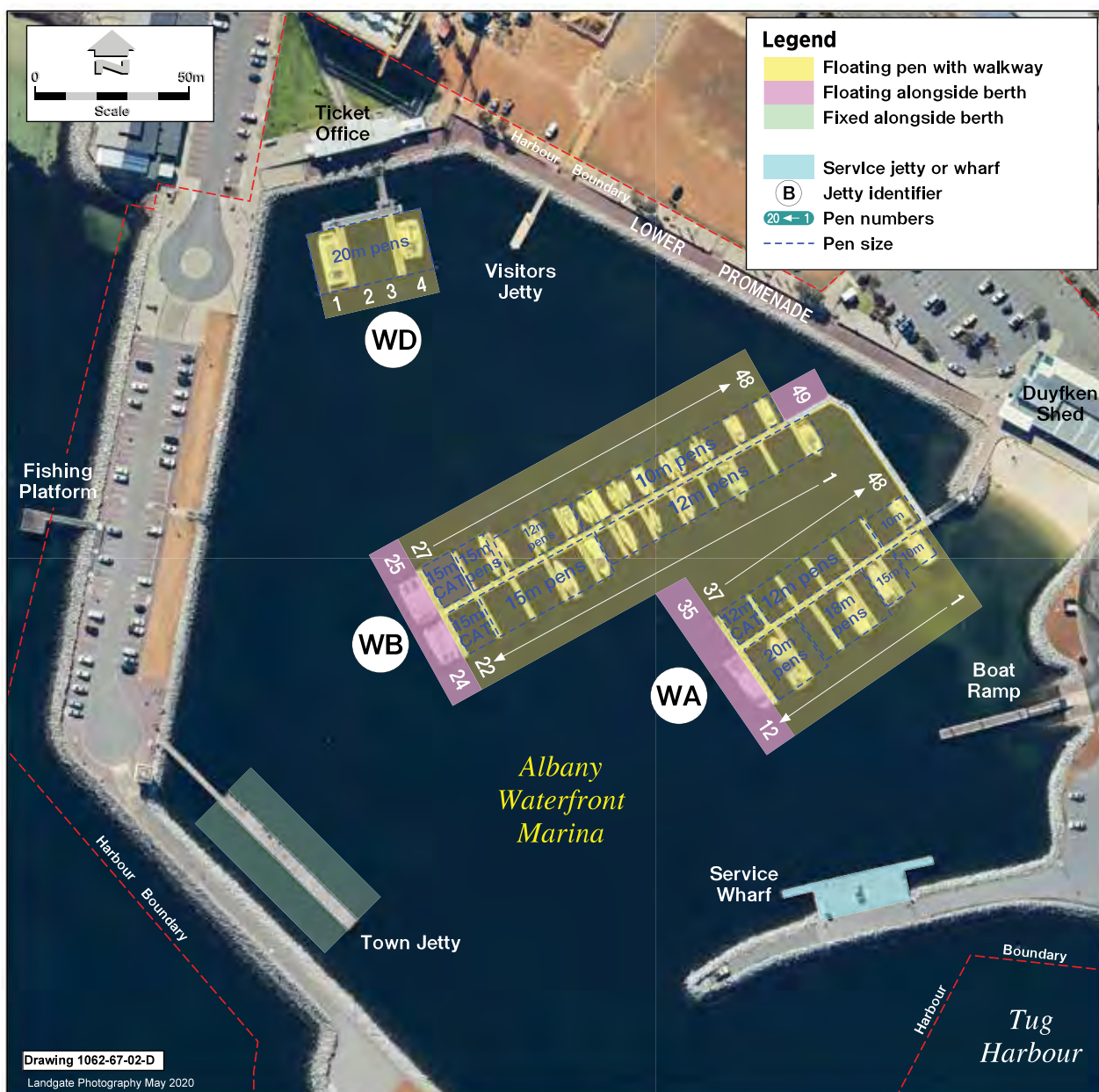
Albany Waterfront Marina

Vessel accommodation

	2022-23		
	Charged per metre of the pen length	Charged per metre of the vessel length	Charged per metre of the vessel length
All fees quoted are inclusive of GST and should be paid in advance	Floating pen with walkway	Floating alongside berth	Fixed alongside berth
12 months	\$ 665.30	\$ 665.30	\$ 531.90
3 months or more per month	\$ 60.70	\$ 60.70	\$ 48.55
1 month	\$ 99.80	\$ 99.80	\$ 79.80
1 week	\$ 29.95	\$ 29.95	\$ 23.95

Guidance note: For other fees and charges not listed above please refer to Statewide fees

Vessel Accommodation Plan (Extract)

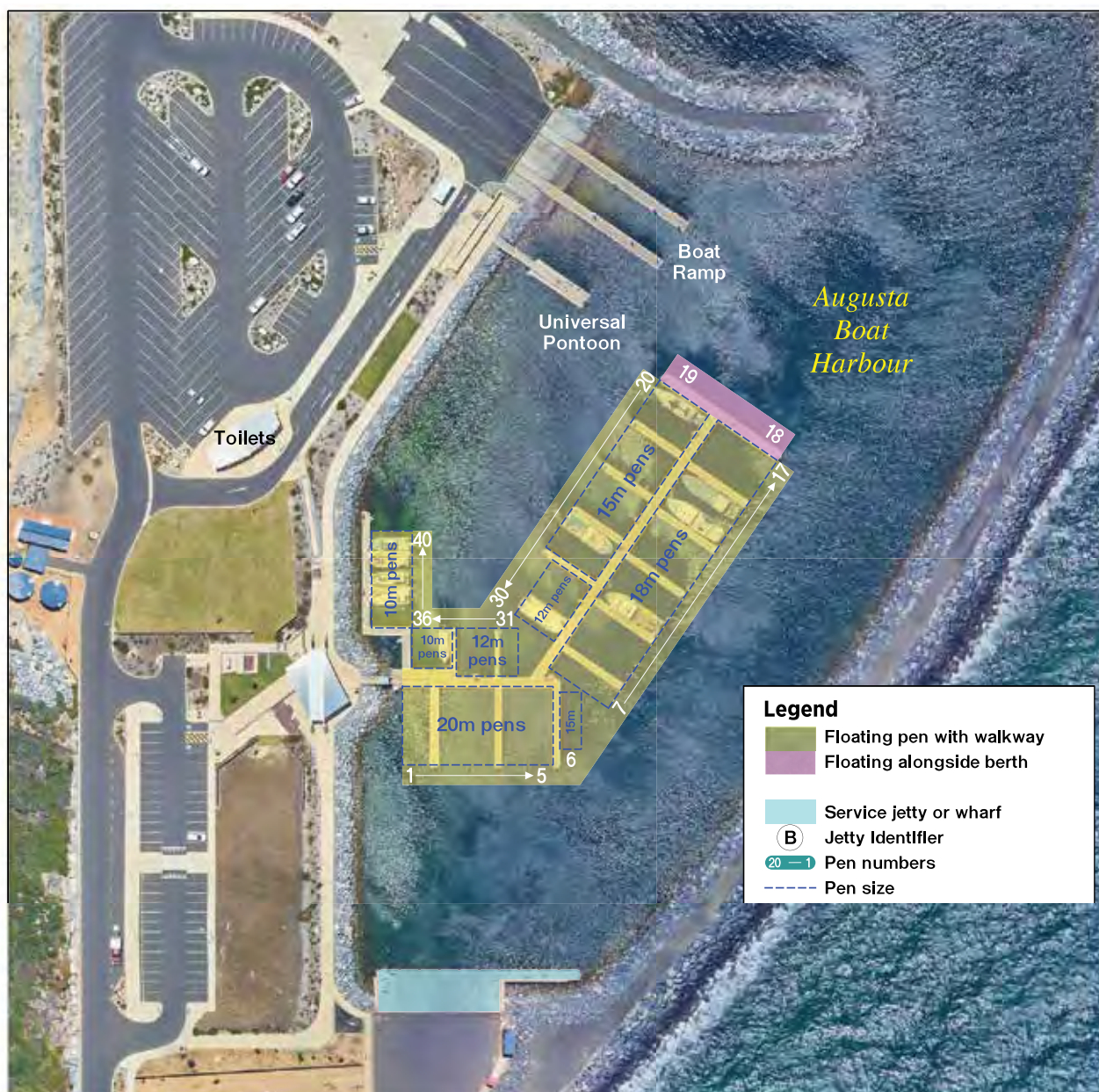


Augusta Boat Harbour

Vessel accommodation		
	2022-23	
	Charged per metre of the pen length	Charged per metre of the vessel length
All fees quoted are inclusive of GST and should be paid in advance	Floating pen with walkway	Floating alongside berth
12 months	\$ 665.30	\$ 665.30
3 months or more per month	\$ 60.70	\$ 60.70
1 month	\$ 99.80	\$ 99.80
1 week	\$ 29.95	\$ 29.95

Guidance note: For other fees and charges not listed above please refer to Statewide fees

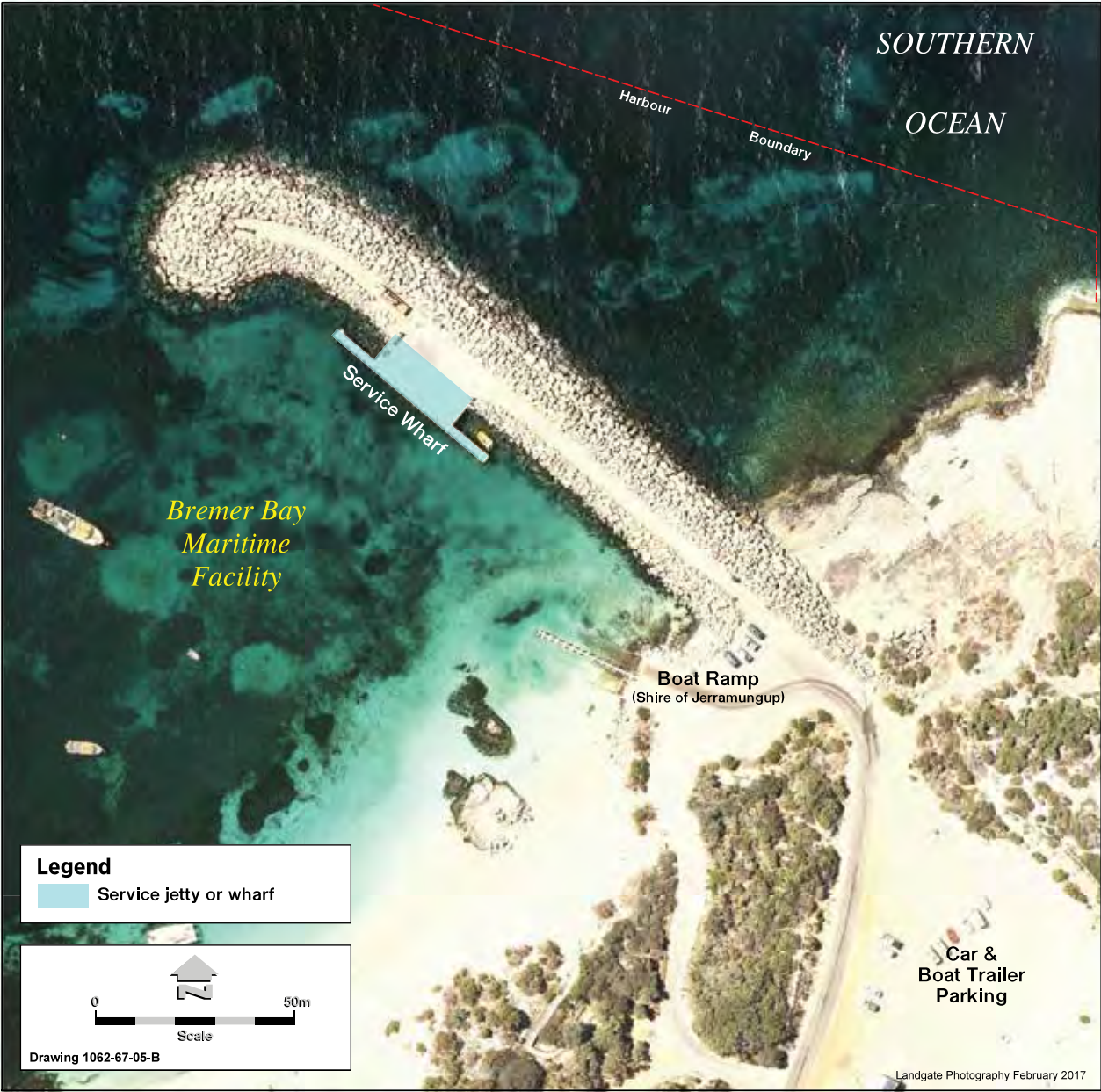
Vessel Accommodation Plan (Extract)



Bremer Bay Maritime Facility

For fees and charges for this facility please refer to Statewide fees

Vessel Accommodation Plan (Extract)



Bunbury (Casuarina) Boat Harbour

Vessel accommodation		
	2022-23	
	Charged per metre of the pen length	Charged per metre of the vessel length
All fees quoted are inclusive of GST and should be paid in advance	Fixed pen with walkway	Fixed alongside berth
12 months	\$ 542.70	\$ 542.70
3 months or more per month	\$ 49.50	\$ 49.50
1 month	\$ 81.40	\$ 81.40
1 week	\$ 24.40	\$ 24.40

Guidance note: For other fees and charges not listed above please refer to Statewide fees

Vessel Accommodation Plan (Extract)

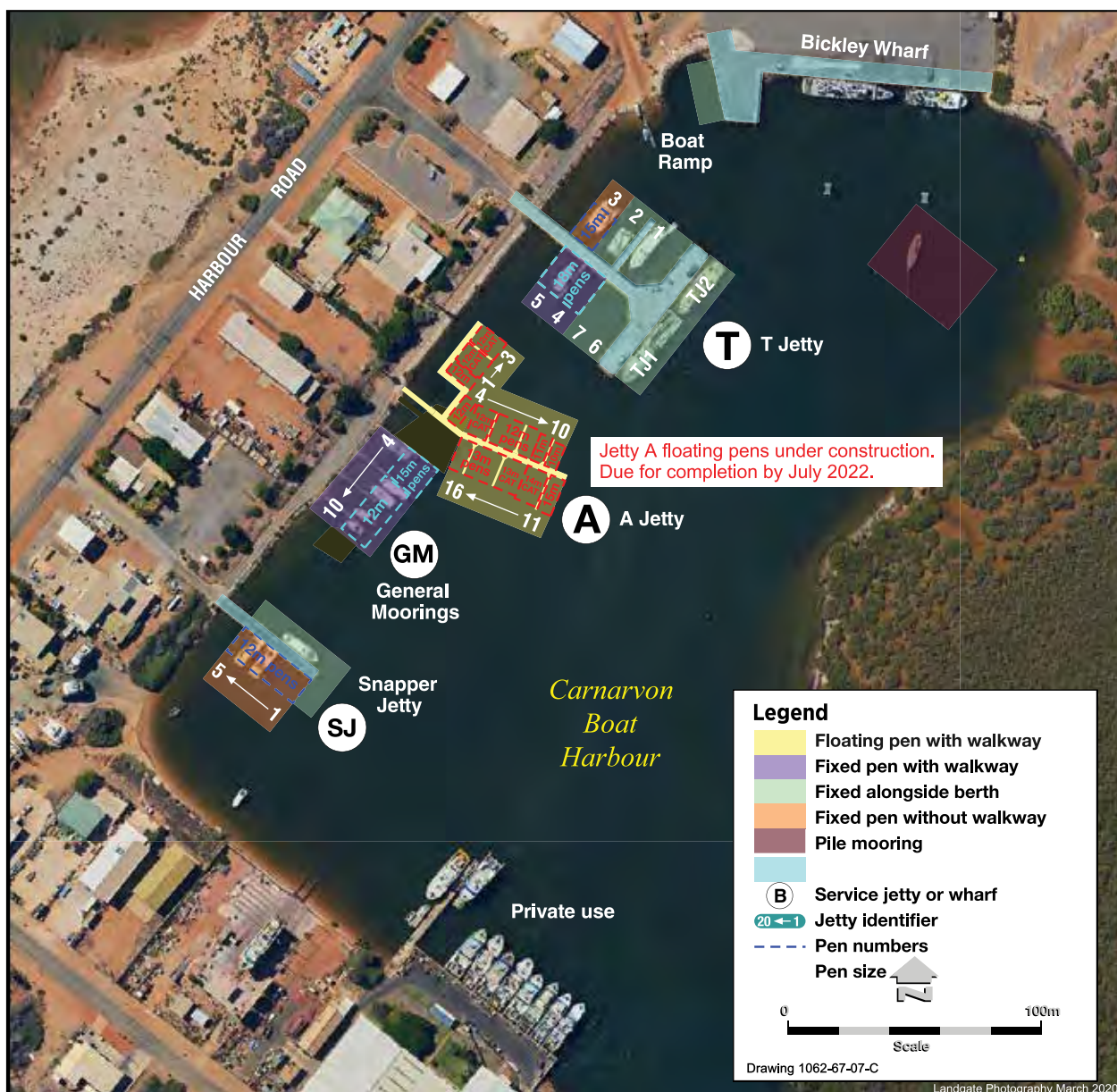


Carnarvon Boat Harbour

Vessel accommodation					
	2022-23				
	Charged per metre of the pen length			Charged per metre of the vessel length	
All fees quoted are inclusive of GST and should be paid in advance	Fixed pen without walkway	Fixed pen with walkway	Floating pen with walkway	Fixed alongside berth	Pile moorings
12 months	\$ 366.80	\$ 401.20	\$ 696.00	\$ 481.30	\$ 225.30
3 months or more per month	\$ 33.45	\$ 36.60	\$ 63.50	\$ 43.90	\$ 20.55
1 month	\$ 55.00	\$ 60.20	\$ 104.40	\$ 72.200	\$ 33.80
1 week	\$ 16.50	\$ 18.05	\$ 31.30	\$ 21.65	\$ 10.15

Guidance note: For other fees and charges not listed above please refer to Statewide fees

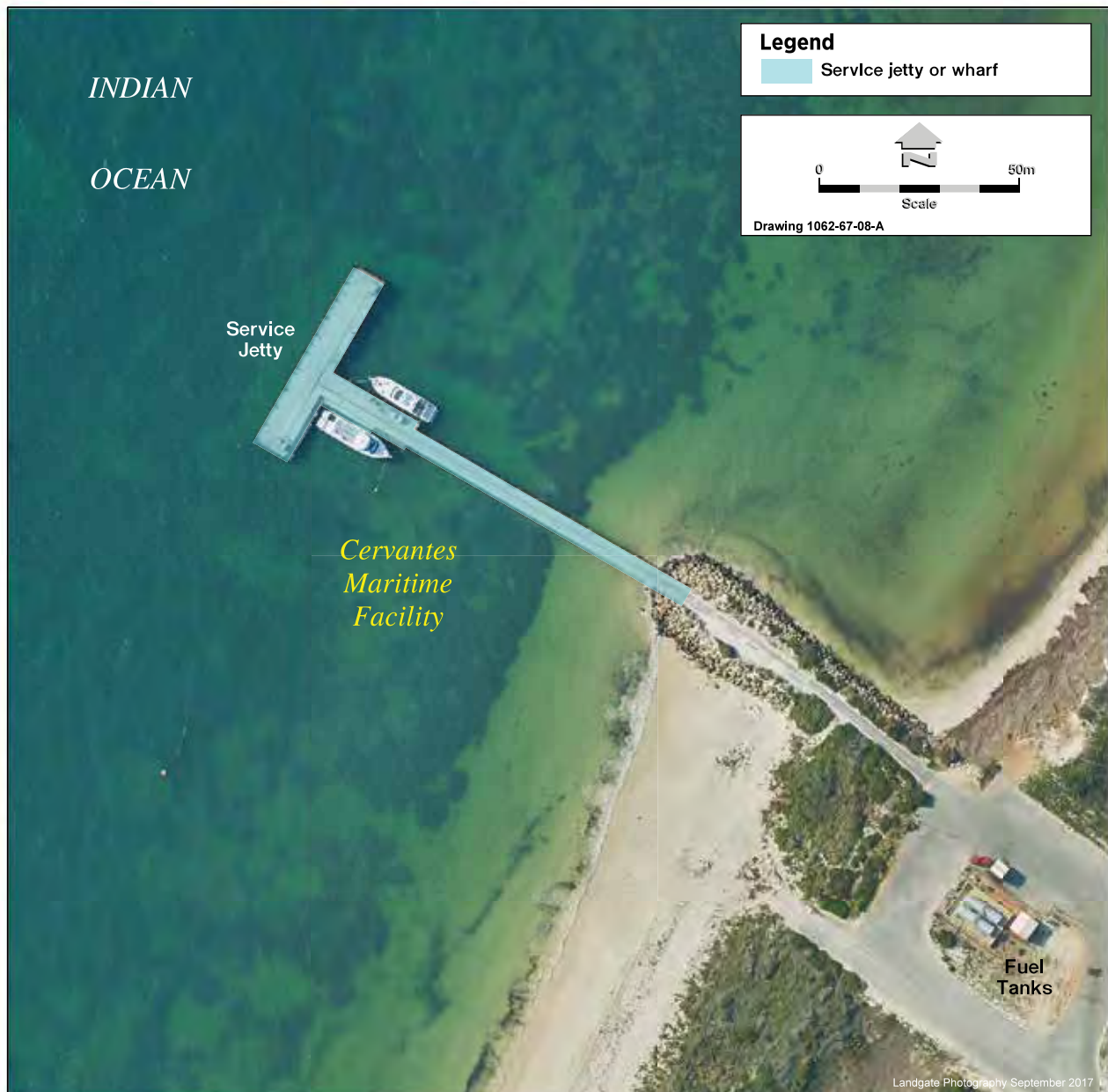
Vessel Accommodation Plan (Extract)



Cervantes Maritime Facility

For fees and charges for this facility please refer to Statewide fees

Vessel Accommodation Plan (Extract)



Coral Bay Maritime Facility

For fees and charges for this facility please refer to Statewide fees

Vessel Accommodation Plan (Extract)

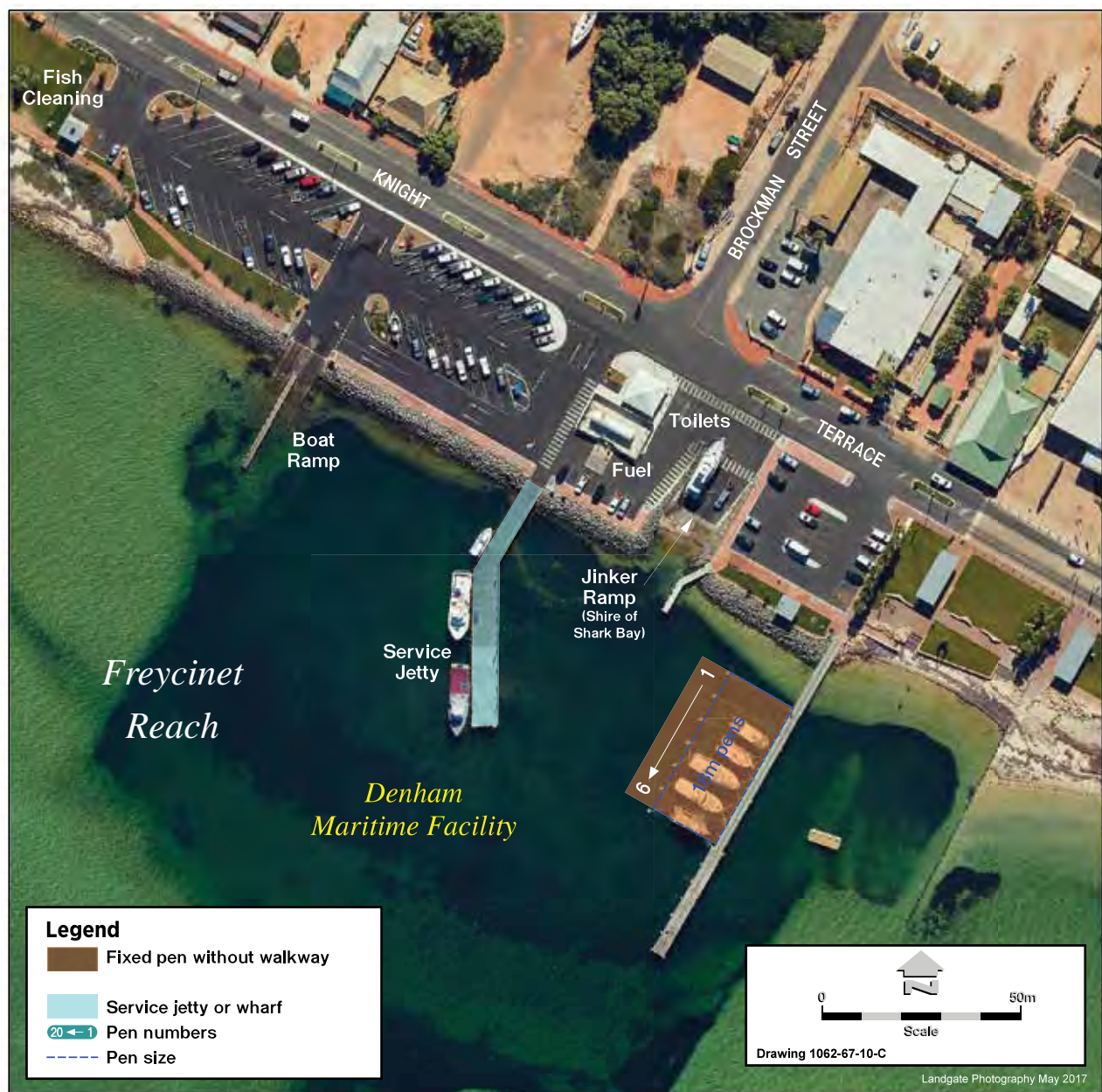


Denham Maritime Facility

Vessel accommodation	
	2022-23
	Charged per metre of the vessel length
All fees quoted are inclusive of GST and should be paid in advance	Fixed pen without walkway
12 months	\$ 454.50
3 months or more per month	\$ 41.45
1 month	\$ 68.20
1 week	\$ 20.45

Guidance note: For other fees and charges not listed above please refer to statewide fees

Vessel Accommodation Plan

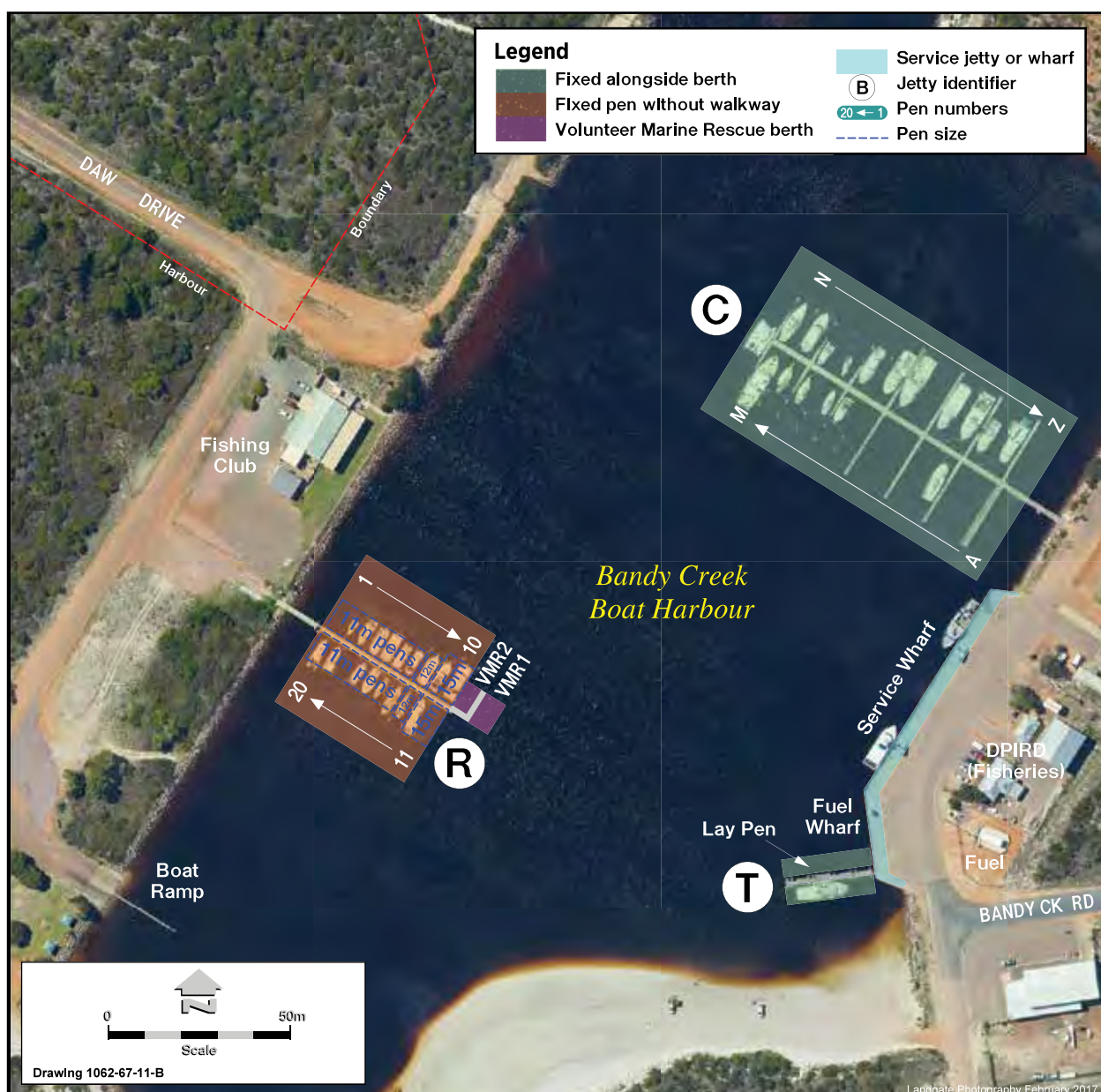


Esperance (Bandy Creek) Boat Harbour

Vessel accommodation		
	2022-23	
	Charged per metre of the pen length	Charged per metre of the vessel length
All fees quoted are inclusive of GST and should be paid in advance	Fixed pen without walkway	Fixed alongside berth
12 months	\$ 340.30	\$ 489.40
3 months or more per month	\$ 31.05	\$ 44.65
1 month	\$ 51.05	\$ 73.40
1 week	\$ 15.30	\$ 22.00

Guidance note: For other fees and charges not listed above please refer to Statewide fees

Vessel Accommodation Plan (Extract)



Exmouth Boat Harbour

Vessel accommodation					
	2022-23				
	SERVICE VESSELS				
	Charged per metre of the pen length			Charged per metre of the vessel length	
All fees quoted are inclusive of GST and should be paid in advance	Fixed pen with walkway	Floating pen with walkway up to 20m	25m pen with walkway (tropical cyclone zone)	Fixed alongside berth	Floating alongside berth
12 months	\$ 765.60	\$ 904.80	\$ 1,113.60	\$ 765.60	\$ 904.80
3 months or more per month	\$ 69.85	\$ 82.55	\$ 101.60	\$ 69.85	\$ 82.55
1 month	\$ 114.85	\$ 135.70	\$ 167.05	\$ 114.85	\$ 135.70
1 week	\$ 34.45	\$ 40.70	\$ 50.10	\$ 34.45	\$ 40.70
For service vessel use of pen with walkway or alongside berth					
per day, per metre of the vessel length					\$ 12.35
Use of service wharf					
For service vessel short term use of the service wharf, other than while refuelling, for each 6 hour period or part thereof					
per metre of the vessel length					\$ 9.50

	RECREATIONAL / TOURISM / GOVERNMENT / FISHING VESSELS				
	Charged per metre of the pen length			Charged per metre of the vessel length	
	Fixed pen with walkway	Floating pen with walkway up to 20m	25m pen with walkway (tropical cyclone zone)	Fixed alongside berth	Floating alongside berth
All fees quoted are inclusive of GST and should be paid in advance					
12 months	\$ 556.80	\$ 696.00	\$ 1113.60	\$ 556.80	\$ 696.00
3 months or more per month	\$ 50.80	\$ 63.50	\$ 101.60	\$ 50.80	\$ 63.50
1 month	\$ 83.50	\$ 104.40	\$ 167.05	\$ 83.50	\$ 104.40
1 week	\$ 25.05	\$ 31.30	\$ 50.10	\$ 25.05	\$ 31.30

Guidance note: For other fees and charges not listed above please refer to Statewide fees

Vessel Accommodation Plan following page

Fremantle Fishing Boat Harbour

Vessel accommodation			
	2022-23		
	ALL VESSELS		
	Fixed pen without walkway	Floating pen with walkway	Floating alongside berth
All fees quoted are inclusive of GST and should be paid in advance	Charged per metre of the pen length	Charged per metre of the pen length	Charged per metre of the vessel length
12 months	\$ 487.20	\$ 696.00	\$ 696.00
3 months or more per month	\$ 44.45	\$ 63.50	\$ 63.50
1 month	\$ 73.10	\$ 104.40	\$ 104.40
1 week	\$ 21.90	\$ 31.30	\$ 31.30

	COMMERCIAL VESSELS	RECREATIONAL VESSELS
	Fixed alongside berth	Fixed alongside berth
All fees quoted are inclusive of GST and should be paid in advance	Charged per metre of the vessel length	Charged per metre of the vessel length
12 months	\$ 550.90	\$ 556.80
3 months or more per month	\$ 50.25	\$ 50.80
1 month	\$ 82.65	\$ 83.50
1 week	\$ 24.80	\$ 25.05

Guidance note: For other fees and charges not listed above please refer to Statewide fees

Vessel Accommodation Plan following page

Fremantle Fishing Boat Harbour (cont)

Vessel Accommodation Plan (Extract)



Legend

- Floating pen with walkway
- Floating alongside berth
- Fixed alongside berth
- Fixed pen without walkway

- Service jetty or wharf
- B Jetty identifier
- 20 ← 1 Pen numbers
- Pen size



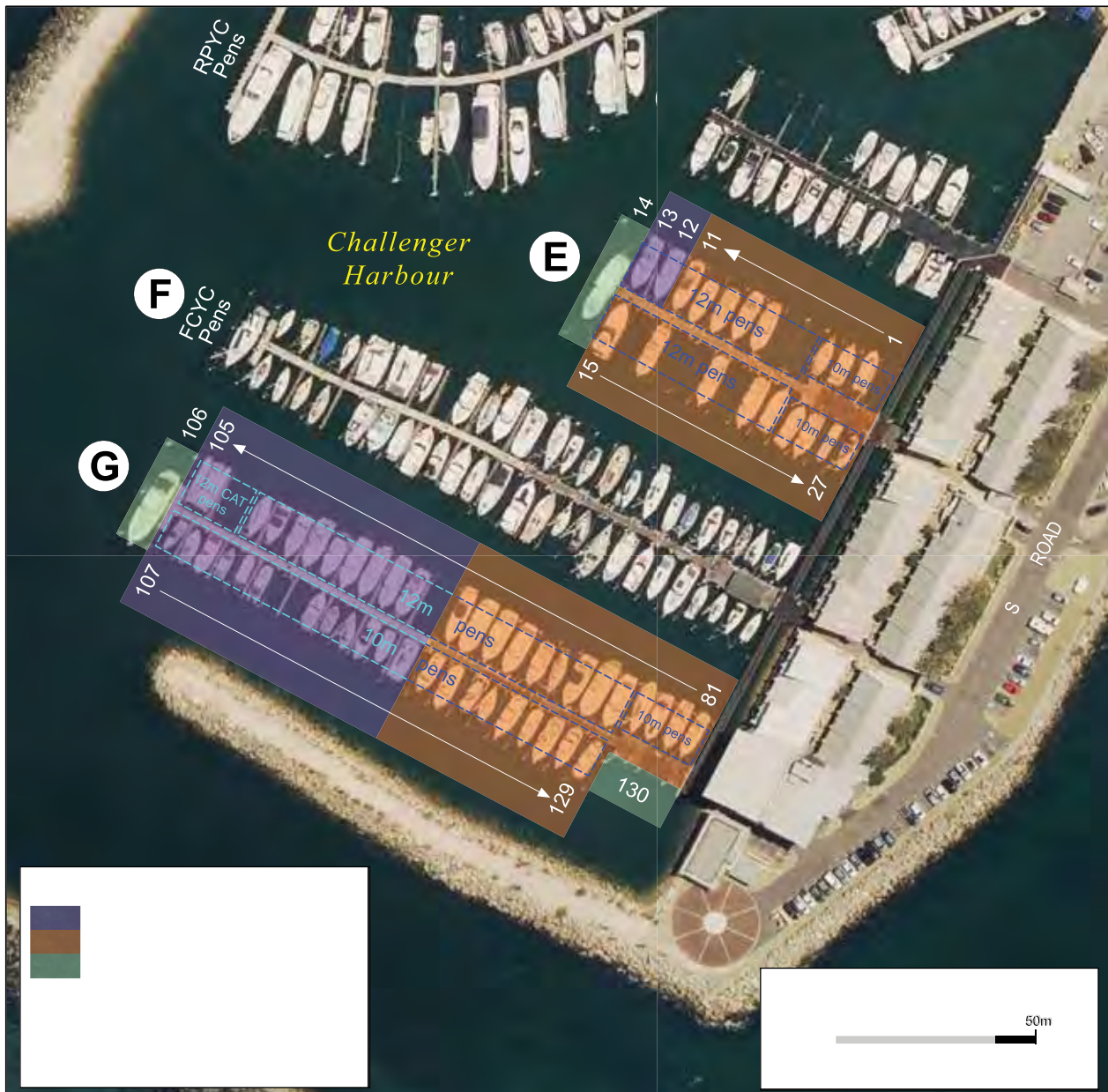
Drawing 1062-67-14-D

Fremantle (Challenger) Boat Harbour

Vessel accommodation			
	2022-23		
	Charged per metre of the pen length		Charged per metre of the vessel length
All fees quoted are inclusive of GST and should be paid in advance	Fixed pen without walkway	Fixed pen with walkway	Fixed alongside berth
12 months	\$ 487.20	\$ 556.80	\$ 556.80
3 months or more per month	\$ 44.45	\$ 50.80	\$ 50.80
1 month	\$ 73.10	\$ 83.50	\$ 83.50
1 week	\$ 21.90	\$ 25.05	\$ 25.05

Guidance note: For other fees and charges not listed above please refer to Statewide fees

Vessel Accommodation Plan (Extract)



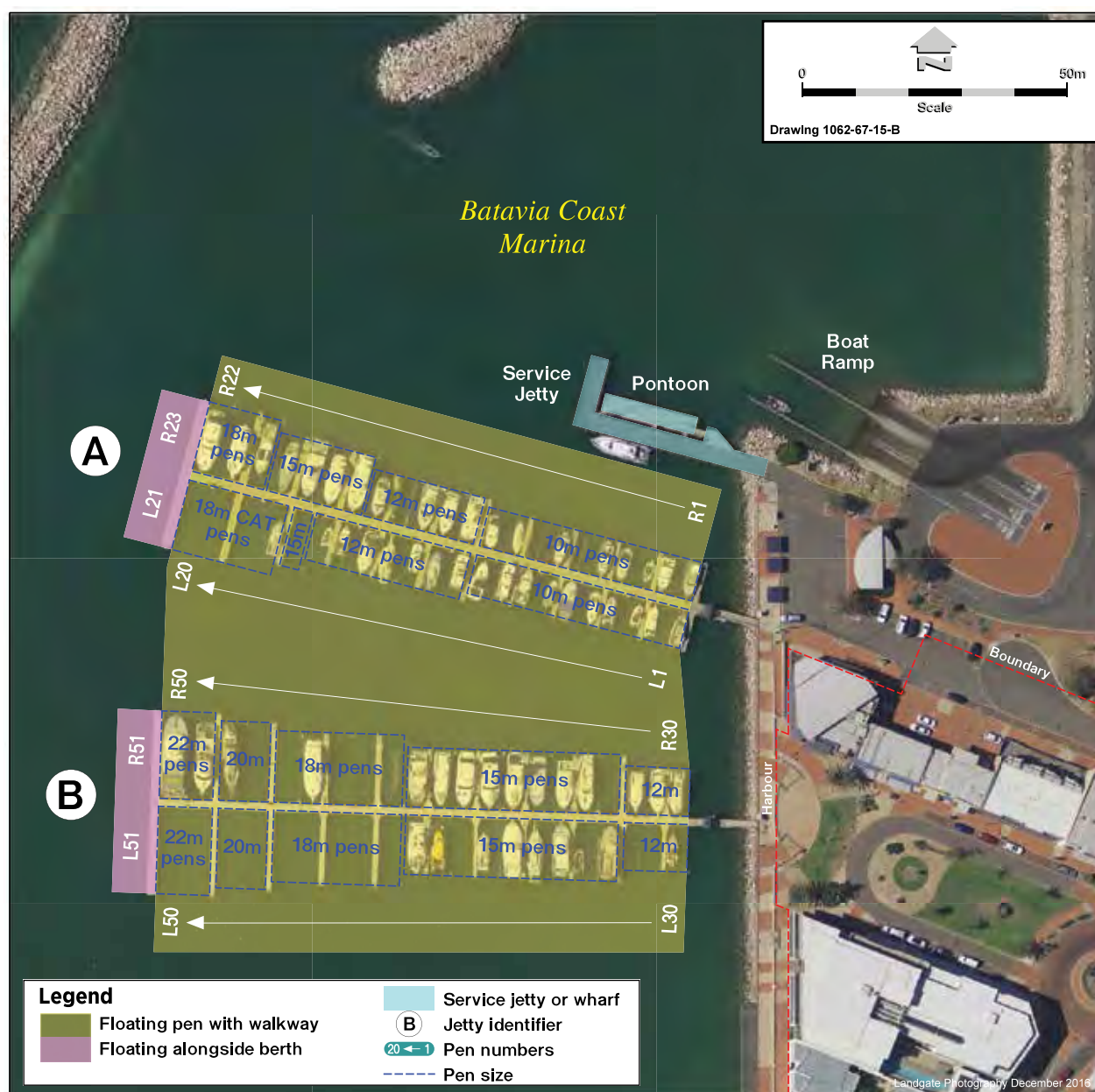
Geraldton (Batavia Coast) Marina

Vessel accommodation

	2022-23	
	Charged per metre of the pen length	Charged per metre of the vessel length
All fees quoted are inclusive of GST and should be paid in advance	Floating pen with walkway	Floating alongside berth
12 months	\$ 696.00	\$ 696.00
3 months or more per month	\$ 63.50	\$ 63.50
1 month	\$ 104.40	\$ 104.40
1 week	\$ 31.30	\$ 31.30

Guidance note: For other fees and charges not listed above please refer to Statewide fees

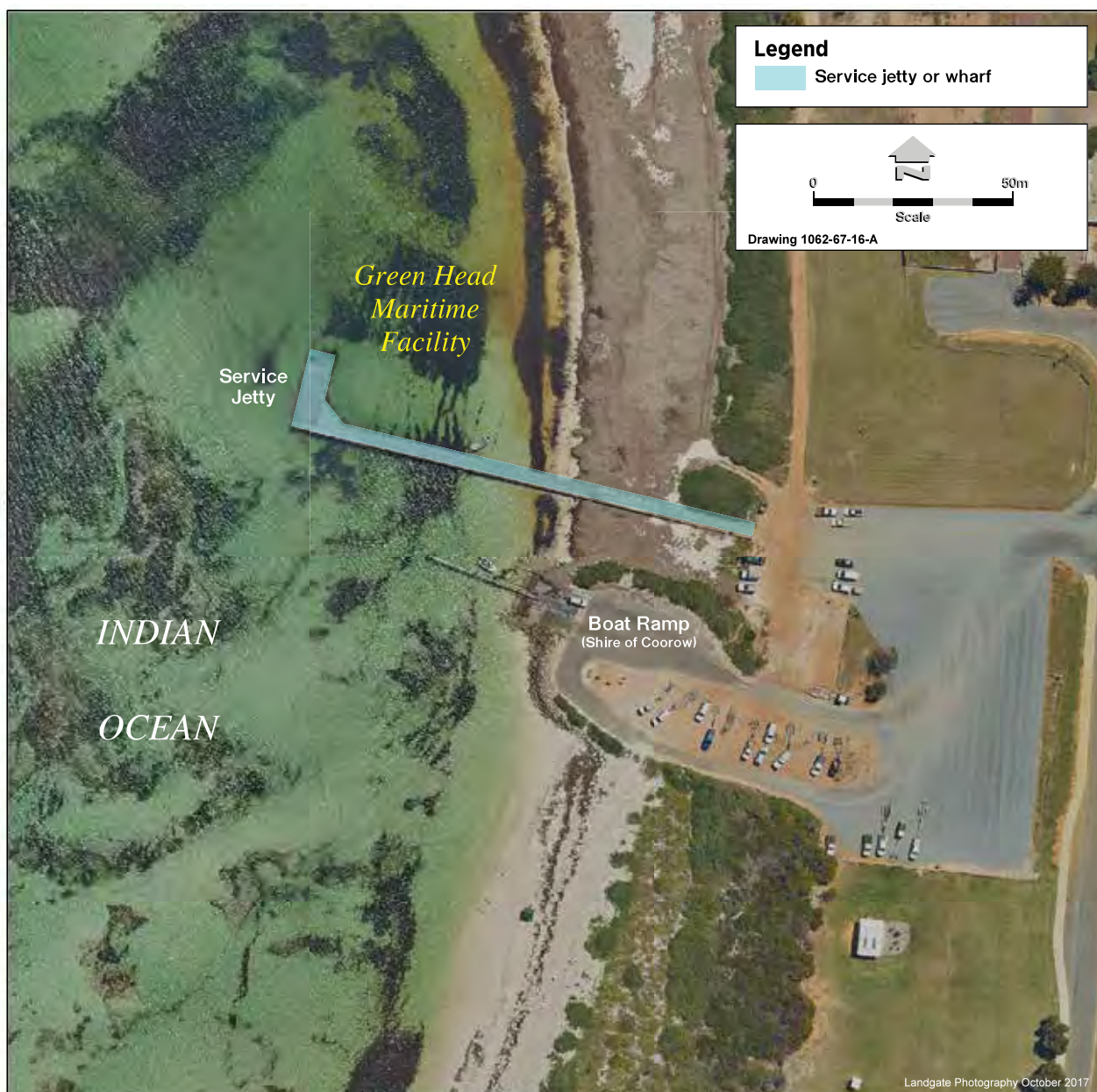
Vessel Accommodation Plan (Extract)



Green Head Maritime Facility

For fees and charges for this facility please refer to Statewide fees

Vessel Accommodation Plan (Extract)



Hillarys Boat Harbour

Vessel accommodation			
	2022-23		
	Charged per metre of the pen length		Charged per metre of the vessel length
All fees quoted are inclusive of GST and should be paid in advance	Fixed pen with walkway	Floating pen with walkway	Floating alongside berth
12 months	\$ 556.80	\$ 696.00	\$ 696.00
3 months or more per month	\$ 50.80	\$ 63.50	\$ 63.50
1 month	\$ 83.50	\$ 104.40	\$ 104.40
1 week	\$ 25.05	\$ 31.30	\$ 31.30

Vehicle and boat trailer parking	
Parking fee per day, per boat trailer or vehicle with boat trailer	\$ 9.50
Annual pass	\$ 150.45

Guidance note: For other fees and charges not listed above please refer to Statewide fees

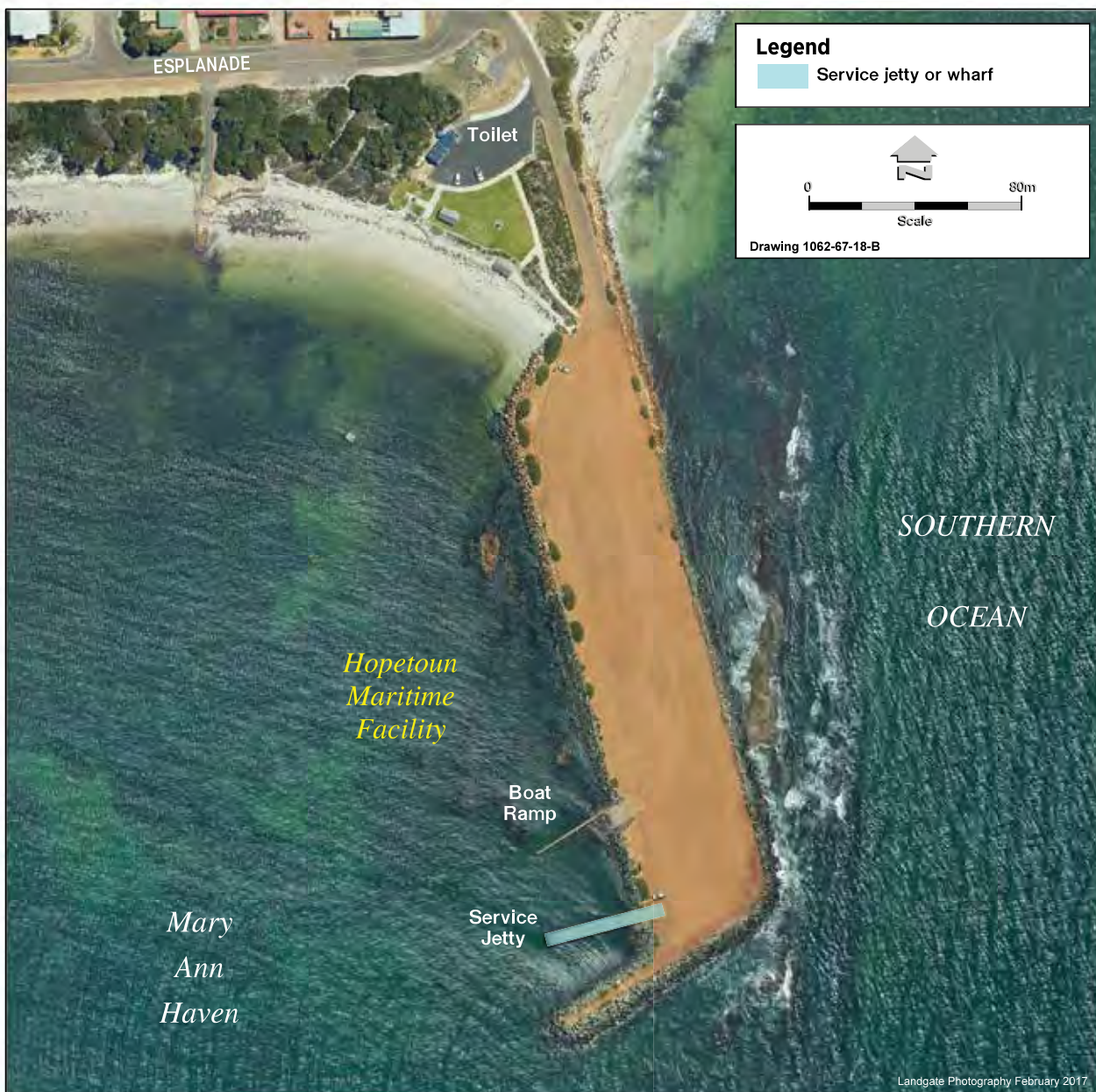
Vessel Accommodation Plan (Extract)



Hopetoun Maritime Facility

For fees and charges for this facility please refer to Statewide fees

Vessel Accommodation Plan (Extract)

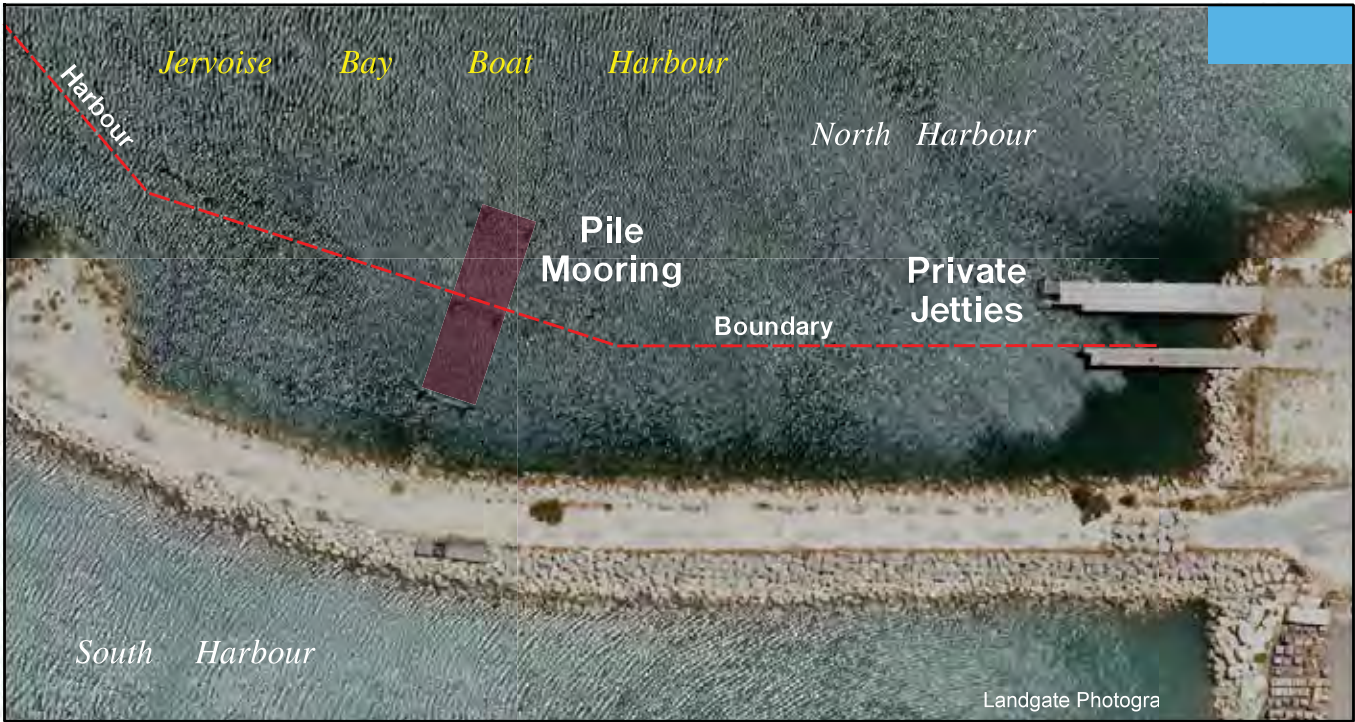


Jervoise Bay Boat Harbour

Vessel accommodation	
	2022-23
	Charged per metre of the vessel length
All fees quoted are inclusive of GST and should be paid in advance	Pile moorings
12 months	\$ 267.80
3 months or more per month	\$ 24.45
1 month	\$ 40.15
1 week	\$ 12.05

Guidance note: For other fees and charges not listed above please refer to Statewide fees

Vessel Accommodation Plan (Extract)



Legend

Pile mooring

Service jetty or wharf

0

50m

Inset Scale

Drawing 1062-67-29-B

Jurien Boat Harbour

Vessel accommodation

	2022-23	
	Charged per metre of the pen length	Charged per metre of the vessel length
All fees quoted are inclusive of GST and should be paid in advance	Fixed pen without walkway	Fixed alongside berth
12 months	\$ 487.20	\$ 556.80
3 months or more per month	\$ 44.45	\$ 50.80
1 month	\$ 73.10	\$ 83.50
1 week	\$ 21.90	\$ 25.05

Guidance note: For other fees and charges not listed above please refer to Statewide fees

Vessel Accommodation Plan (Extract)



Kalbarri Maritime Facility

Vessel accommodation		
	2022-23	
	Charged per metre of the pen length	Charged per metre of the vessel length
All fees quoted are inclusive of GST and should be paid in advance	Fixed pen with walkway	Fixed alongside berth
12 months	\$ 446.40	\$ 446.40
3 months or more per month	\$ 40.75	\$ 40.75
1 month	\$ 66.95	\$ 66.95
1 week	\$ 20.10	\$ 20.10

Guidance note: For other fees and charges not listed above please refer to Statewide fees

Vessel Accommodation Plan (Extract)



Lancelin Maritime Facility

For fees and charges for this facility please refer to Statewide fees

Vessel Accommodation Plan (Extract)



Leeman Maritime Facility

For fees and charges for this facility please refer to Statewide fees

Vessel Accommodation Plan (Extract)



Onslow (Beadon Creek) Maritime Facility

Vessel accommodation

	2022-23				
	SERVICE VESSEL		RECREATIONAL / TOURISM GOVERNMENT / FISHING VESSEL		
	Pile moorings			Fixed alongside berth	
All fees quoted are inclusive of GST and should be paid in advance	Charged per metre of the vessel length				
12 months	\$	487.20	\$	278.40	N/A
3 months or more per month	\$	44.45	\$	25.40	N/A
1 month	\$	73.10	\$	41.75	\$ 83.50
1 week	\$	21.90	\$	12.55	\$ 25.05
1 day	\$	11.00			

Use of service wharf

For service vessel use of service wharf, per 6 consecutive hours or part thereof

per metre of the vessel length	\$	9.50
--------------------------------	----	------

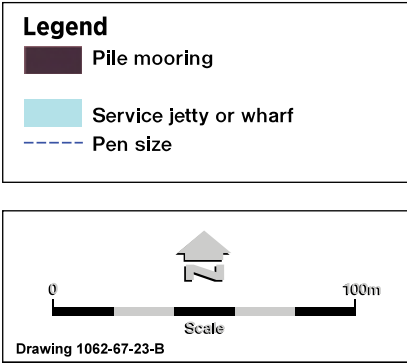
Guidance note: For other fees and charges not listed above please refer to Statewide fees

Vessel Accommodation Plan following page

Onslow (Beadon Creek) Maritime Facility

(cont)

Vessel Accommodation Plan (Extract)



Point Samson (Johns Creek) Boat Harbour

Vessel accommodation			
	2022-23		
	RECREATIONAL / TOURISM / GOVERNMENT / FISHING VESSEL		SERVICE VESSEL
	Fixed alongside berth		
All fees quoted are charged per metre of the vessel length, are inclusive of GST and should be paid in advance	For use of berth at service wharf or jetty		
12 months	\$	556.80	\$ 765.60
3 months or more per month	\$	50.80	\$ 69.85
1 month	\$	83.50	\$ 114.85
1 week	\$	25.05	\$ 34.45

Service wharf & service jetty	
All fees quoted are inclusive of GST and should be paid in advance	
For service vessel for use of service wharf or jetty	
per metre of the vessel length, per 6 consecutive hours or part thereof	\$ 9.50

Careening pad	
All fees quoted are inclusive of GST and should be paid in advance	
Use of careening pad per day for a vessel	
not over 15 metres in length	\$ 227.35
over 15 metres in length	\$ 331.90

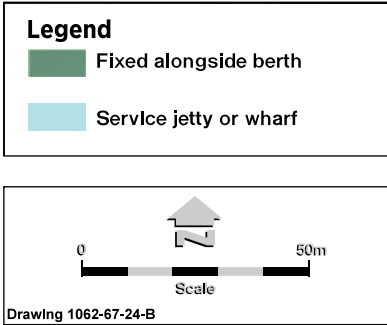
Guidance note: For other fees and charges not listed above please refer to Statewide fees

Vessel Accommodation Plan following page

Point Samson (Johns Creek) Boat Harbour

(cont)

Vessel Accommodation Plan (Extract)



Port Denison Boat Harbour

Vessel accommodation	
	2022-23
	Charged per metre of the pen length
All fees quoted are inclusive of GST and should be paid in advance	Fixed pen with walkway
12 months	\$ 460.40
3 months	\$ 42.00
1 month	\$ 69.05
1 week	\$ 20.70

Guidance note: For other fees and charges not listed above please refer to Statewide fees

Vessel Accommodation Plan (Extract)



Port Gregory Maritime Facility

For fees and charges for this facility please refer to Statewide fees

Vessel Accommodation Plan (Extract)



Swan Canning Rivers

Barrack Street and Mends Street Jetties

Jetty permit	
	2022-23
	Inc GST
1. For vessel for 12 months - the higher of \$4,854.75 and the result of the following calculation:	
per passenger calculated on the highest vessel passenger carrying capacity as surveyed	\$ 67.85
PLUS	
for vessel up to 35 metres in length	
higher of	\$ 8,737.65
or per metre of the vessel length	\$ 485.40
for vessel 35 metres in length or over	
per metre of the vessel length	\$ 776.75
MINUS	\$ 6,795.95
2. Sullage fee for vessel for which the item 1 fee has not been paid	
per pump out	\$ 98.95

Burswood Jetty

Jetty permit	
For exclusive use of Berth 1 on event days and priority use at other times, for 12 months, paid in advance	\$ 16,114.50

Guidance note: Berth 2 is for use by commercial vessels. Berth 3 is for use by recreational vessels.

Other Department of Transport managed jetties in the Swan Canning Rivers

Jetty permit	
For 12 months, paid in advance, per metre of the vessel length	\$ 91.40

Guidance note: A vessel must not stay alongside any service jetty or wharf in the Swan Canning Rivers for a period greater than 15 minutes at a time, unless otherwise specified within a permit.

Vessel Accommodation Plan following page

Swan Canning Rivers (cont)

Vessel Accommodation Plan (Extract)



Refer to larger location map on page 43

Two Rocks Marina

Vessel accommodation

	2022-23				
	Charged per metre of the pen length		Charged per metre of the vessel length		Charged per metre of the pen length
All fees quoted are inclusive of GST and should be paid in advance	Fixed pen without walkway	Fixed pen with walkway	Fixed alongside berth	Floating alongside berth	Floating pen with walkway
12 months	\$ 487.20	\$ 556.80	\$ 556.80	\$ 696.00	\$ 696.00
3 months or more per month	\$ 44.45	\$ 50.80	\$ 50.80	\$ 63.50	\$ 63.50
1 month	\$ 73.10	\$ 83.50	\$ 83.50	\$ 104.40	\$ 104.40
1 week	\$ 21.90	\$ 25.05	\$ 25.05	\$ 31.30	\$ 31.30

Guidance note: For other fees and charges not listed above please refer to Statewide fees

Vessel Accommodation Plan (Extract)



Fuel wharfage

Location	2022-23
	All fees quoted are inclusive of GST and are charged per litre
Albany Waterfront Marina	\$ 0.062
Albany (Emu Point) Maritime Facility	
Augusta Boat Harbour	
Augusta Maritime Facility	
Bremer Bay Maritime Facility	
Bunbury (Casuarina) Boat Harbour	
Carnarvon Boat Harbour	
Cervantes Maritime Facility	
Denham Maritime Facility	
Esperance (Bandy Creek) Boat Harbour	
Exmouth Boat Harbour	
Fremantle Fishing Boat Harbour	
Green Head Maritime Facility	
Hillarys Boat Harbour	
Hopetoun Maritime Facility	
Jurien Boat Harbour	
Kalbarri Maritime Facility	
Lancelin Maritime Facility	
Leeman Maritime Facility	
Onslow (Beadon Creek) Maritime Facility	
Point Samson (Johns Creek) Boat Harbour	
Port Denison	
Port Gregory Maritime Facility	
Swan and Canning Rivers - Barrack Street Jetty	
Two Rocks Marina	

Maritime facilities managed by DoT



Swan Canning Rivers Location Map



Contact details

For all general enquiries or to provide feedback please email us at facilityfees@transport.wa.gov.au

Fremantle Fishing Boat Harbour

For queries regarding:

- Burswood Jetty
- Challenger Boat Harbour
- Fremantle Fishing Boat Harbour and
- Jervoise Bay Boat Harbour

Fremantle Fishing Boat Harbour

14 Capo D'Orlando Drive

South Fremantle WA 6162

Phone: (08) 9431 1020

Email: ffbh@transport.wa.gov.au

Hillarys Boat Harbour

For queries regarding:

- Hillarys
- Lancelin
- Swan Canning Rivers (Except Burswood) and
- Two Rocks

Hillarys Boat Harbour

86 Southside Drive

Hillarys WA 6025

Phone: (08) 9216 8530

Email: hillarys@transport.wa.gov.au

Pilbara region

For queries regarding

- Point Samson and
- Onslow

Pilbara region

3-5 Welcome Road

PO Box 429

Karratha WA 6714

Phone: (08) 6551 6800 or

Phone: (08) 9216 8230 (Accounts)

Email: pilbara@transport.wa.gov.au

Exmouth branch

For queries regarding:

- Coral Bay and
- Exmouth

Exmouth branch

21 Maidstone Crescent

Exmouth WA 6707

Phone: (08) 9216 8220

Email: gascoyne@transport.wa.gov.au

Carnarvon branch

For queries regarding:

- Carnarvon and
- Denham

Carnarvon branch

Small Boat Harbour Road,

Carnarvon WA 6701

Phone: (08) 9216 8230

Email: gascoyne@transport.wa.gov.au

Mid West region

For queries regarding

- Cervantes
- Geraldton
- Jurien
- Kalbarri
- Leeman
- Port Denison and
- Port Gregory

Mid West region

(Geraldton office)

23 Eastward Road

Wonthella WA 6530

Phone: (08) 9216 8170

Email: midwest@transport.wa.gov.au

South West region

For queries regarding

- Augusta and
- Bunbury

South West region

24 Wellington Street

Bunbury WA 6230

Phone: (08) 9216 8200

Email: southwest@transport.wa.gov.au

Great Southern region

For queries regarding

- Albany Emu Point
- Albany Waterfront Marina
- Bremer Bay
- Esperance and
- Hopetoun

Great Southern region

178 Stirling Terrace

Albany WA 6330

Phone: (08) 9216 8520

Email: greatsouthern@transport.wa.gov.au