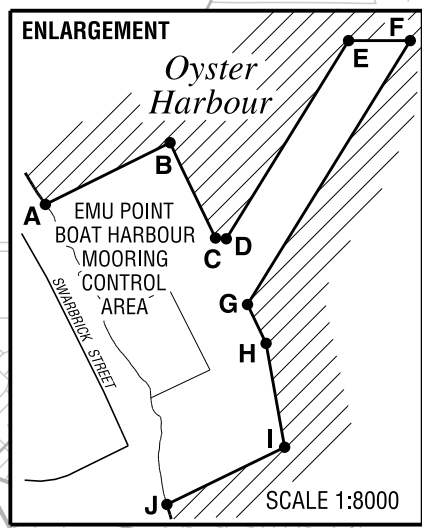
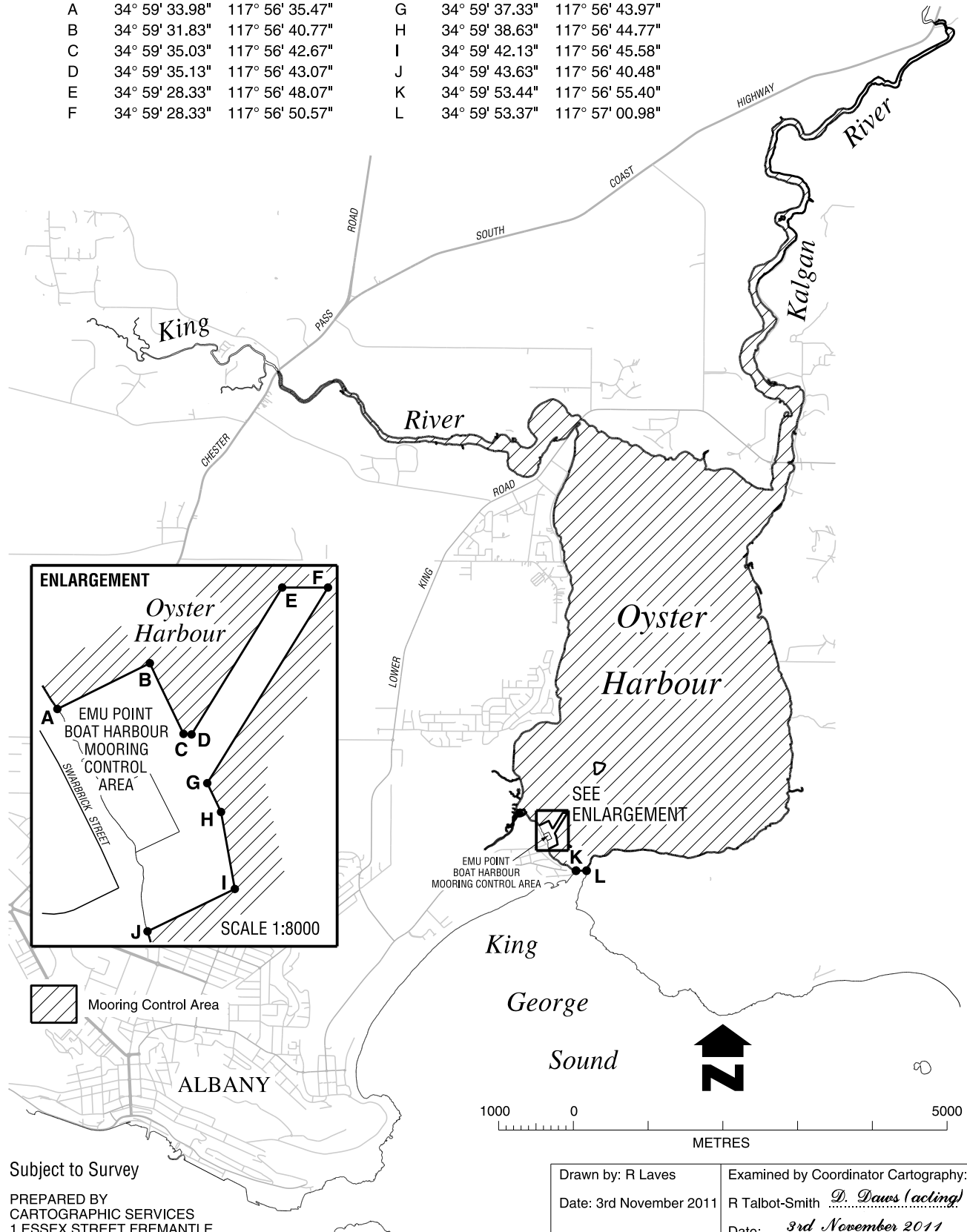


# OYSTER HARBOUR MOORING CONTROL AREA SHIPPING AND PILOTAGE ACT 1967

Boundary Corner Coordinates  
Datum GDA 94

Point	Latitude	Longitude	Point	Latitude	Longitude
A	34° 59' 33.98"	117° 56' 35.47"	G	34° 59' 37.33"	117° 56' 43.97"
B	34° 59' 31.83"	117° 56' 40.77"	H	34° 59' 38.63"	117° 56' 44.77"
C	34° 59' 35.03"	117° 56' 42.67"	I	34° 59' 42.13"	117° 56' 45.58"
D	34° 59' 35.13"	117° 56' 43.07"	J	34° 59' 43.63"	117° 56' 40.48"
E	34° 59' 28.33"	117° 56' 48.07"	K	34° 59' 53.44"	117° 56' 55.40"
F	34° 59' 28.33"	117° 56' 50.57"	L	34° 59' 53.37"	117° 57' 00.98"



Mooring Control Area

Subject to Survey

PREPARED BY  
CARTOGRAPHIC SERVICES  
1 ESSEX STREET FREMANTLE

Drawn by: R Laves	Examined by Coordinator Cartography:
Date: 3rd November 2011	R Talbot-Smith <i>D. Daws (acting)</i>
	Date: <i>3rd November 2011</i>

L:\Marine\_safety\1239-10-Mooring\1239-10-06.dgn