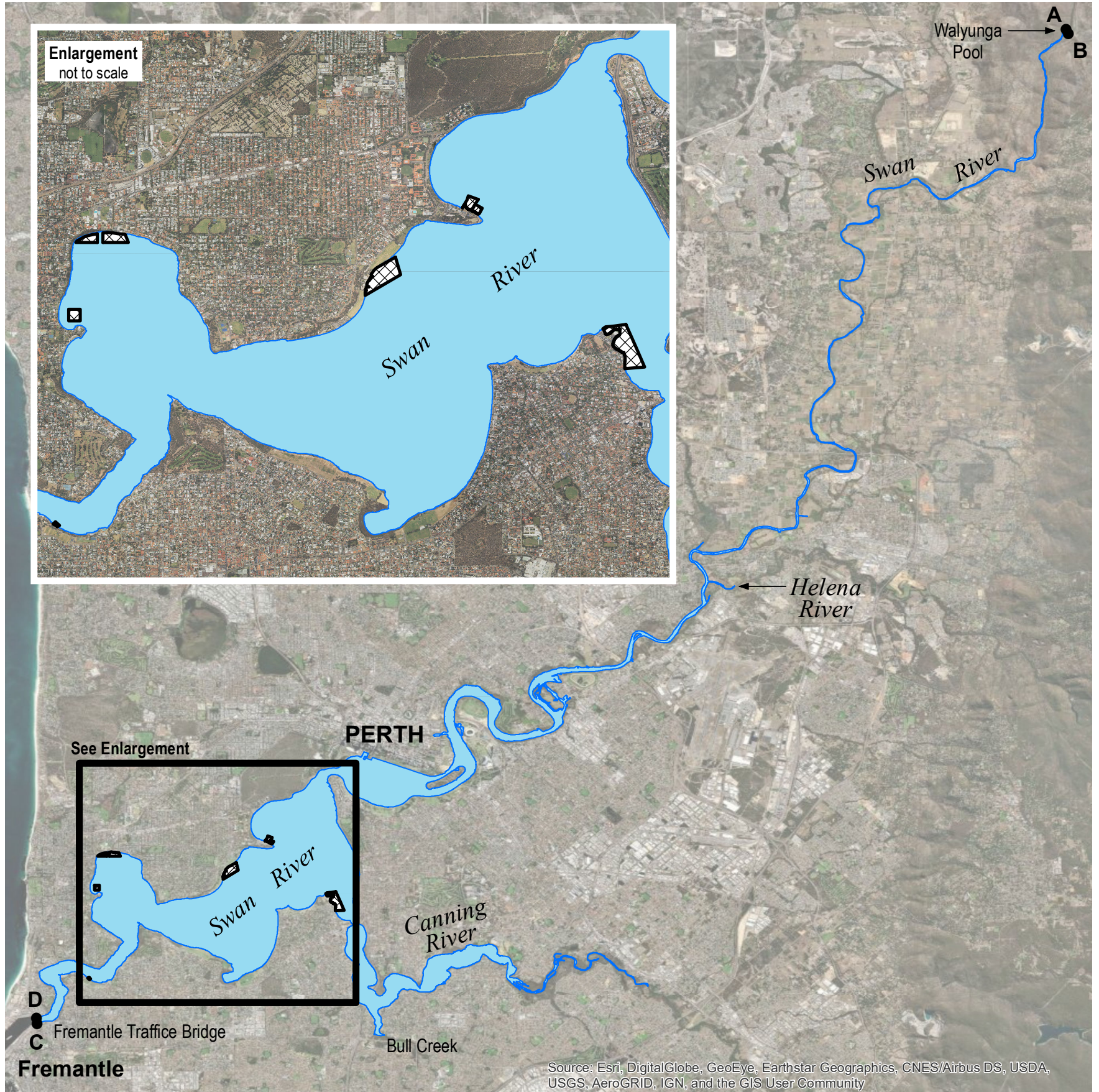


# SWAN AND CANNING RIVERS MOORING CONTROL AREA SITE PLAN

ALL THE WATER OF THE SWAN, CANNING AND HELENA RIVERS AND BULL CREEK UPSTREAM OF THE  
FREMANTLE PORT AUTHORITY INNER HARBOUR UPSTREAM BOUNDARY EXCLUDING THE EXCLUDED AREAS

POSITION OF SEGMENT NODES BASED ON DATUM GDA2020

POINT	LATITUDE (SOUTH)	LONGITUDE (EAST)
A RIVERS EDGE	31° 43' 57.332"	116° 4' 29.488"
B RIVERS EDGE	31° 44' 1.872"	116° 4' 32.198"
C FREM. TRAFFIC BRIDGE	32° 2' 31.392"	115° 45' 16.492"
D FREM. TRAFFIC BRIDGE	32° 2' 25.238"	115° 45' 15.505"



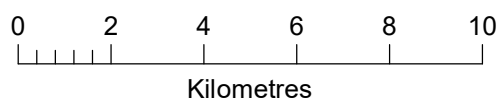
### Legend

- Excluded Area
- Mooring Control Area

SUBJECT TO SURVEY

PREPARED BY  
CARTOGRAPHIC SERVICES  
5 NEWMAN COURT FREMANTLE

ESRI BASEMAP AERIAL IMAGERY



Drawn by: S Salgado  
Date: 11 February 2022

Examined by Manager Cartography:  
R. Talbot-Smith: .....  
Date: .....

L:\HCS\TENDURE\Swan River Mooring Areas\6871801A.mxd