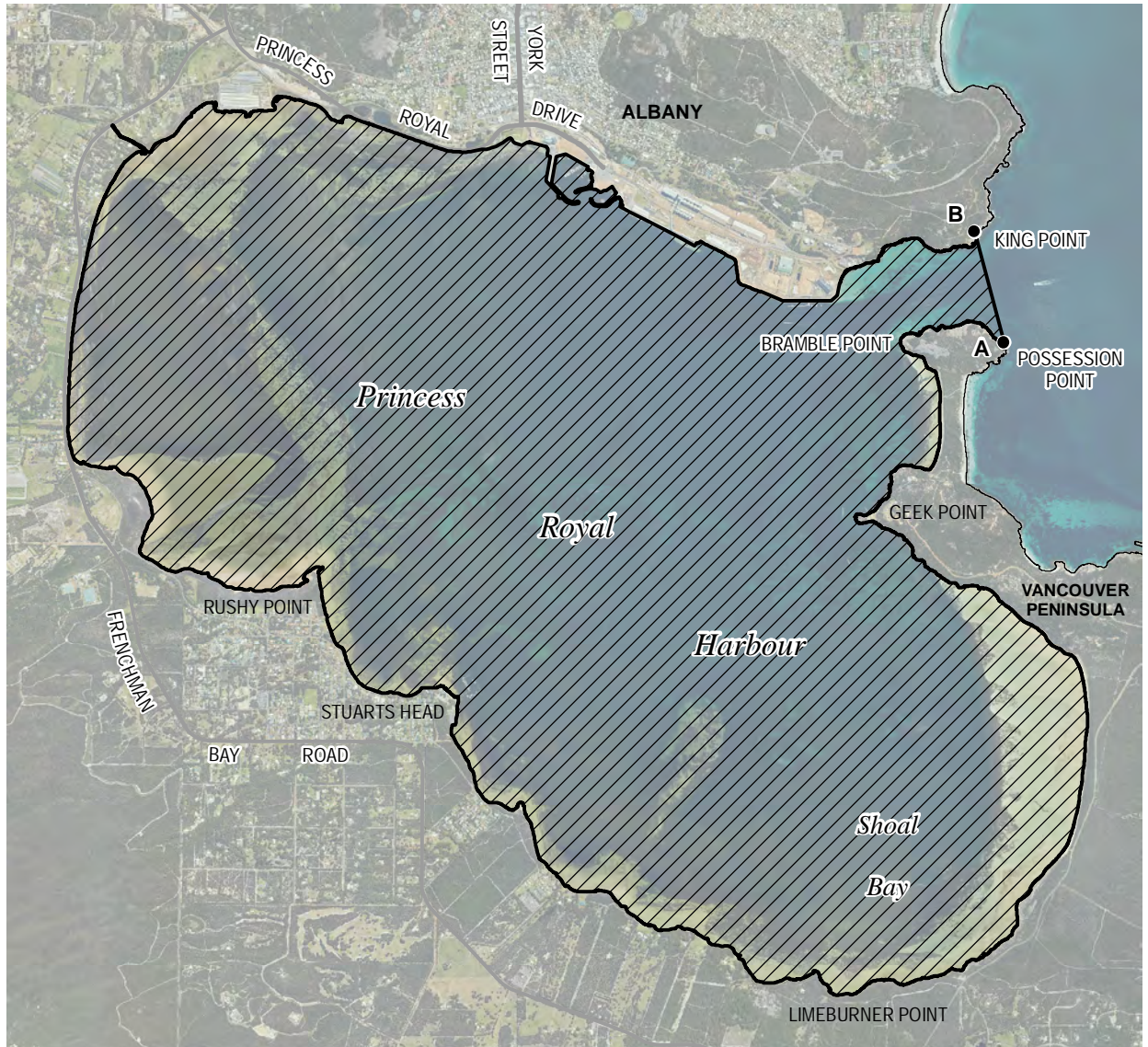


LIMIT OF SMOOTH WATERS ALBANY PRINCESS ROYAL HARBOUR

PRINCESS ROYAL HARBOUR WEST OF A LINE THROUGH POSSESSION POINT (35°2.523'S, 117°55.319'E)
AND KING POINT (35°2.093'S, 117°55.174'E).

THE WATERS ARE SHOWN HATCHED ON THE WESTERN AUSTRALIAN DEPARTMENT OF TRANSPORT PLAN 846-16-03.

BOUNDARY COORDINATES DATUM GDA94		
Node	LATITUDE (SOUTH)	LONGITUDE (EAST)
A	35° 02.523'	117° 55.319'
B	35° 02.093'	117° 55.174'



Legend

Smooth Waters

LANDGATE AERIAL PHOTOGRAPHY FEBRUARY 2017

PREPARED BY
CARTOGRAPHIC SERVICES
1 ESSEX STREET FREMANTLE



Drawn by: S Salgado
Date: 24 November 2017

Examined by Manager Cartography:
R. Talbot-Smith: *R. Talbot-Smith*
Date: *24th November 2017*

Document Path: L:\Marine_safety\846_SmoothWaters_WA\July_2017\Xcel\8461603.mxd



PLAN 846 - 16 - 03