



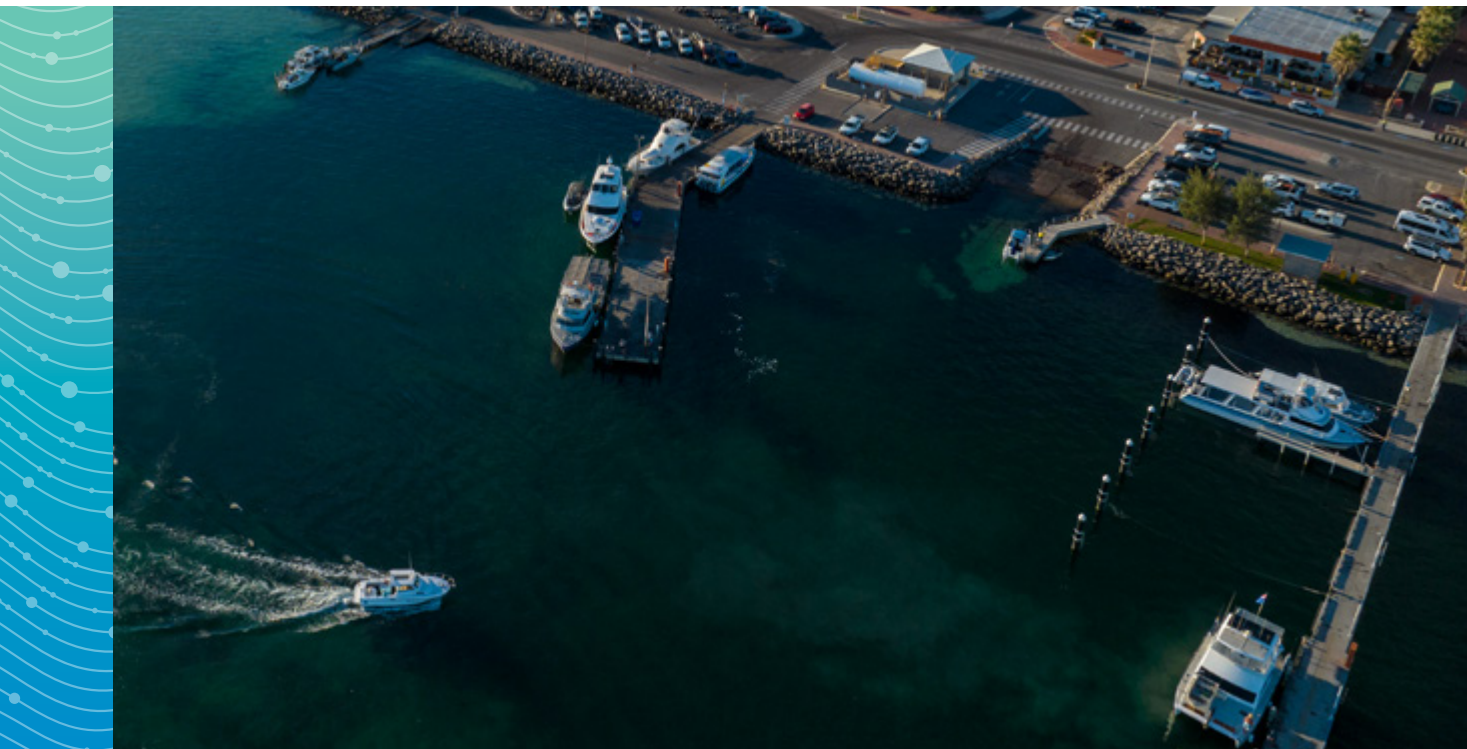
Government of **Western Australia**  
Department of **Transport**

Empowering a  
thriving *community*

# Maritime Facilities 2025-26 Fees and Charges

Effective from 1 July 2025  
Version 1





*Cover photograph: Coral Bay Maritime Facility*

*Above photograph: Denham Maritime Facility*

---

## Acknowledgment of Country

The Department of Transport acknowledges the traditional custodians of the land throughout Western Australia and pays our respects to Elders past, present and future.

We acknowledge the members of all Aboriginal communities, their cultures and continuing connection to Country throughout the State.

---

## About this Publication

The information contained in this publication is provided in good faith and believed to be accurate at time of publication.

The State shall in no way be liable for any loss sustained or incurred by anyone relying on the information. 0125.

© Department of Transport 2025

---

## Alternative formats

This publication is available in alternative formats upon request. Contact us to request a copy or submit an enquiry.

---



# Contents

<b>General notes</b>	<b>4</b>
<b>Statewide fees</b>	<b>6</b>
<b>Maritime Facilities</b>	
Albany (Emu Point) Boat Harbour - <i>Fees and Vessel Accommodation Plan</i>	8
Albany Waterfront Marina - <i>Fees and Vessel Accommodation Plan</i>	9
Augusta Boat Harbour - <i>Fees and Vessel Accommodation Plan</i>	10
Bremer Bay Maritime Facility - <i>Fees and Vessel Accommodation Plan</i>	11
Bunbury (Casuarina) Boat Harbour - <i>Fees and Vessel Accommodation Plan</i>	12
Carnarvon Boat Harbour - <i>Fees and Vessel Accommodation Plan</i>	13
Cervantes Maritime Facility - <i>Fees and Vessel Accommodation Plan</i>	14
Coral Bay Maritime Facility - <i>Fees and Vessel Accommodation Plan</i>	15
Denham Maritime Facility - <i>Fees and Vessel Accommodation Plan</i>	16
Esperance (Bandy Creek) Boat Harbour - <i>Fees and Vessel Accommodation Plan</i>	17
Exmouth Boat Harbour - <i>Fees</i>	18
Exmouth Boat Harbour - <i>Vessel Accommodation Plan</i>	19
Fremantle (Challenger) Boat Harbour - <i>Fees and Vessel Accommodation Plan</i>	20
Fremantle Fishing Boat Harbour - <i>Fees and Vessel Accommodation Plan</i>	21
Geraldton (Batavia Coast) Marina - <i>Fees and Vessel Accommodation Plan</i>	22
Green Head Maritime Facility - <i>Fees and Vessel Accommodation Plan</i>	23
Hillarys Boat Harbour - <i>Fees</i>	24
Hillarys Boat Harbour - <i>Vessel Accommodation Plan</i>	24
Hopetoun Maritime Facility - <i>Fees and Vessel Accommodation Plan</i>	26
Jervoise Bay Boat Harbour - <i>Fees and Vessel Accommodation Plan</i>	27
Jurien Boat Harbour - <i>Fees and Vessel Accommodation Plan</i>	28
Kalbarri Maritime Facility - <i>Fees and Vessel Accommodation Plan</i>	29
Lancelin Maritime Facility - <i>Fees and Vessel Accommodation Plan</i>	30
Leeman Maritime Facility - <i>Fees and Vessel Accommodation Plan</i>	31
Onslow (Beadon Creek) Maritime Facility - <i>Fees</i>	32
Onslow (Beadon Creek) Maritime Facility - <i>Vessel Accommodation Plan</i>	33
Point Samson (Johns Creek) Boat Harbour - <i>Fees</i>	34
Point Samson (Johns Creek) Boat Harbour - <i>Vessel Accommodation Plan</i>	35
Port Denison Boat Harbour - <i>Fees and Vessel Accommodation Plan</i>	36
Port Gregory Maritime Facility - <i>Fees and Vessel Accommodation Plan</i>	37
Spoilbank Marina, Port Hedland - <i>Fees</i>	38
Spoilbank Marina, Port Hedland - <i>Vessel Accommodation Plan</i>	39
Swan Canning Rivers (inc Barrack Street, Mends Street and Burswood Jetties) - <i>Fees</i>	40
Swan Canning Rivers (inc Barrack Street, Mends Street and Burswood Jetties) <i>Vessel Accommodation Plan</i>	41
Two Rocks Marina - <i>Fees</i>	42
Two Rocks Marina - <i>Vessel Accommodation Plan</i>	43
<b>Fuel wharfage</b>	<b>44</b>
<b>Maritime facilities managed by DoT (map)</b>	<b>46</b>
<b>Swan Canning Rivers (map)</b>	<b>47</b>

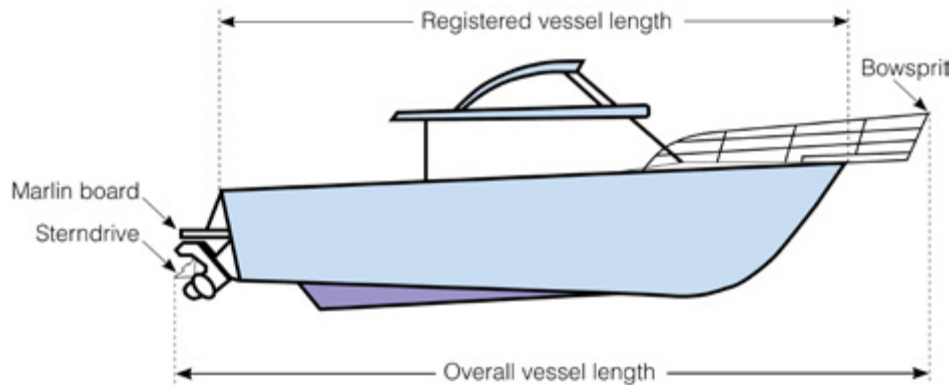
# General notes

## 1. General notes

Vessel owner and skipper jointly liable for all fees and charges

All fees quoted are inclusive of GST and should be paid in advance, unless otherwise specified in writing

For charge calculation purposes, vessel length refers to the overall vessel length, including marlin board, sterndrive, bowsprit etc; rounded down to the nearest whole metre



The fee for any service or use of facilities not contemplated or provided for in the agreed fee schedule for a particular location shall be charged at cost

“At cost” means the full cost of a service, taking into account the direct and indirect costs. Direct costs are costs that can be attributed directly and unequivocally to a service, including direct staffing costs, as well as expenses incurred specifically for that service or product etc. Indirect costs are costs that are not directly attributable to a particular service - sometimes referred to as overheads or corporate costs - and can include costs associated with financial services, human resources, information technology etc

## 2. Vessel accommodation

Where annual fees have been paid for a particular facility, use of another facility may be temporarily allocated for the convenience of harbour operators, without fee adjustment

Harbour management may temporarily allocate a vessel to a larger pen or a different accommodation type in order to optimise the use of available pens. The fees charged will be the same as the prescribed fee due had the vessel been accommodated in an appropriately sized pen or the originally allocated pen

## 3. Period definitions

Short-term means: Up to 1 hour in any 24 hour period (see note 5 overleaf for further details)

Pay 6 hours or part thereof means: Charged per 6 hour block

Day means: A period of 24 consecutive hours or part thereof

Week means: A period of 7 consecutive days or part thereof

Month means: A calendar month or part thereof – ie: from a specified time/date in one month to the same time/date in the next month

Annual/Year means: A period of 12 consecutive months or part thereof

## 4. Vessel type definitions

Recreational vessel: Means a vessel held wholly for the purpose of recreational or sporting activities and not for hire or reward

Commercial vessel: Means a vessel which is not used solely for pleasure or recreation and is used in the course of any business or in connection with any commercial transaction (excludes service vessels at Exmouth, Onslow, Point Samson and Port Hedland)

Tourism vessel: Means a vessel used for commercial tourism purposes

Fishing vessel: Means a vessel used for catching fish or other living resources of the sea or seabed for trading or manufacturing purposes, but excludes any vessel engaged in harvesting or transportation of algae or aquatic plants.



# General notes

## 4. Vessel type definitions (cont)

**Service vessel:** Means a vessel used in the course of any business not associated with fishing or tourism and excludes Government vessels. Fees pertaining to service vessels apply at Exmouth, Onslow, Point Samson and Port Hedland.

**Government vessel:** Means a vessel that belongs to, or is vested in, the Commonwealth or a State or Territory of the Commonwealth.

## 5. Use of a service jetty or wharf

A daily fee of \$8.70 per metre of the vessel length for the user of a service jetty or wharf will apply for commercial vessels (excluding service vessels at Exmouth, Onslow, Point Samson and Port Hedland, where other fees apply) or for recreational vessels of 25 metres or over in length.

An annual fee of \$99.80 per metre of the vessel length for the short-term use of a service jetty or wharf will apply for any vessel, whether commercial or recreational, but excluding service vessels at Exmouth, Onslow, Point Samson and Port Hedland.

If an annual fee for use of the service jetty or wharf has been paid, then no further charges will apply for the use of any service jetty or wharf for up to 1 hour in any 24 hour period, subject to availability, at any DoT managed maritime facility within the State for the duration of the period for which the annual vessel accommodation fee has been paid\*.

If a vessel accommodation fee (includes pen, alongside berth or harbour mooring fee, but excludes mooring licence fees for mooring sites not within a DoT managed harbour boundary) has been paid by any vessel (excluding service vessels at Exmouth, Onslow, Point Samson and Port Hedland), then use of the service jetty or wharf within that maritime facility, subject to availability, is free for up to 1 hour in any 24 hour period; for the duration of the period for which the vessel accommodation fee has been paid\*.

If an annual vessel accommodation fee has been paid by any vessel (excluding service vessels at Onslow, Point Samson and Port Hedland) then use of a service jetty or wharf at any DoT managed maritime facility within the State, subject to availability, is free for up to 1 hour in any 24 hour period, for the duration of the period for which the vessel accommodation fee has been paid\*.

If an annual vessel accommodation fee or an annual service jetty/wharf fee has been paid by any vessel (excluding service vessels at Exmouth, Onslow, Point Samson and Port Hedland), but that vessel wishes to use the service jetty or wharf for longer than the included 1 hour in any 24 hour period, then a daily fee, as appropriate for that vessel, will apply.

If a vessel accommodation fee has not been paid then the following fee will apply for the user of a service jetty or wharf, subject to availability, for any purpose other than fuelling\*:

- Daily fee of \$62.25 for a recreational vessel of less than 25 metres in length;
- Daily fee of \$8.70 per metre of the vessel's length for a commercial vessel (excluding service vessels) or for a recreational vessel of 25 metres or more in length;
- Annual fee for short-term use of a service jetty or wharf by any vessel (excluding service vessels) of \$99.80 per metre of the vessel's length.

If a vessel is refuelling then there is no charge for use of the associated service jetty or wharf, while refuelling and simultaneous loading/unloading operations (if applicable) are continuously in progress. If a vessel wishes to remain at the service jetty after refuelling and simultaneous loading/unloading operations are complete, then an appropriate accommodation/useage fee will be applied.

**Fishing vessels:** The 1 hour limit for short-term use of a service wharf or jetty may be extended for a licensed fishing vessel if required to complete active loading or unloading operations, subject to the vessel vacating the berth to facilitate other operations if required by an Officer of the Department or an Authorised Person and subject to the extended period only applying if active loading or unloading operations are continuously in progress.

*\* If a vessel accommodation fee of 3 months or more has been paid at Fremantle Fishing Boat Harbour or Fremantle Challenger Boat Harbour then that vessel is entitled to use any DoT managed jetty in the Swan Canning Rivers (see page 41) for up to 15 minutes at a time, to a maximum of one hour per day for the period of the vessel accommodation, excluding event days at Burswood Jetty, when vessels may need to move on more quickly.*

*\* In the Swan Canning Rivers a vessel must not stay alongside any service jetty or wharf for a period greater than 15 minutes at a time. On event days at Burswood Jetty vessels may be required to move on more quickly to facilitate efficient use of the jetty and reduce unnecessary waiting times for other jetty users.*

*\* Where a berth is marked for exclusive use by vessels of a specified user at Burswood Jetty, no other vessel is permitted to use the berth at the times specified.*

# Statewide fees 2025-26

<b>1. Live on board, per vessel, per month</b>	
For basic facility	\$56.35
For enhanced facility (includes laundry)	\$171.70
Guidance notes: Refer to 'Live on Board Policy'	
a. 'Live on Board' fee applies to persons intending to live on board a vessel for more than 6 consecutive days or more than 10 days in any month.	
b. The 'Live on Board' fee has GST applied at the concessional rate of 5.5%. Where the 'Live on Board' fee is charged, the corresponding pen fee will also have GST applied at 5.5%. Refer to Australian Tax Office public GST ruling: GSTR 2012/7 Goods and services tax: long-term accommodation in commercial residential premises.	
<b>2. Electricity supply</b>	
metered COST	
<b>3. Water supply</b>	
metered COST	
<b>4.1 Harbour swing (or fore/aft) moorings</b>	
User installed and maintained harbour swing (or fore/aft) moorings at Bremer Bay, Bunbury- Casuarina Boat Harbour, Carnarvon Boat Harbour, Exmouth Boat Harbour, Jervoise Bay Boat Harbour, Kalbarri Murchison River, Port of Onslow (includes Beadon Creek) and Port Denison - Inner Harbour Mooring Control Areas (unless otherwise specified on a location basis)	
12 months, per metre of the vessel length	\$147.20
3 months or more per month, per metre of the vessel length	\$13.40
1 month, per metre of the vessel length	\$22.05
1 week or more per week, per metre of the vessel length	\$6.60
per day, per metre of the vessel length	\$2.90
<b>4.2 Harbour swing (or fore/aft) moorings</b>	
Department of Transport installed and maintained harbour swing (or fore/aft) moorings (unless otherwise specified on a location basis)	
1 week or more per week, per vessel	\$228.15
per day, per vessel	\$40.30
<b>5. Rubbish removal</b>	
Excess quantity from vessel not using harbour, or source other than vessel, per half skip supplied and emptied	COST
Vessel waste oil in excess of 150 litres	COST
Waste oil drum or container not removed by owner	COST
Removal of rubbish not placed in supplied bins	COST
<b>6. Cruise liner transfer vessel use of pen, berth, service jetty or wharf to load or unload passengers</b>	
per day, per metre of the vessel length	\$12.65
plus, per passenger	\$5.25

# Statewide fees 2025-26

<b>7. General cargo at the service jetty or wharf or appurtenant area controlled by the Department</b>	
If loaded from or into vessel, per tonne or m <sup>3</sup>	\$8.30
If vessel is lifted to or from harbour, per metre of the vessel length, per lift	\$18.45
<b>8. Use of service jetty or wharf</b>	
For use of service wharf/jetty hardstand or appurtenant area for storage or maintenance, per day per m <sup>2</sup>	\$2.15
<b>9. Recreational vessel of less than 25 metres in length use of service jetty or wharf, alongside berth, pen or pile mooring</b>	
per day	\$62.25
<b>10. Recreational vessel of 25 metres or more in length use of service jetty or wharf, alongside berth, pen or pile mooring" per day, per metre of the vessel length</b>	
per day, per metre of the vessel length	\$8.70
<b>11. Commercial vessel use of service jetty or wharf (excludes service vessels at Exmouth, Onslow and Point Samson)</b>	
per day, per metre of the vessel length	\$8.70
<b>12. Short-term use of service jetty or wharf for any vessel (excludes service vessels at Exmouth, Onslow and Point Samson)</b>	
12 months, per metre of the vessel length	\$99.80
<b>13. Use of floating dinghy pen</b>	
12 months, per vessel	\$451.40
<b>14. Fuel wharfage fee (applicable at all DoT managed maritime facilities)</b>	
cents per litre	\$0.068
<b>15. Calculation of vessel accommodation fee payment options</b>	
12 months:	100%
3 months or more per month:	9.125% of 12 month fee*
1 month:	15% of 12 month fee*
1 week or more per week:	4.5% of 12 month fee*
<b>16. Calculation of pen fees for over width vessels</b>	
When a specified CAT pen is available: 150% of the fee for a standard pen of the same pen length for that vessel*	
When a vessel requires two standard pens: 100% of the fee for each of the two pens being utilised	
For a CAT at the head of a jetty or those fitting into a standard size pen: Same fee as a standard width vessel for that pen or berth	
Daily fee for an over width vessel using a CAT pen: Same daily fee applicable for a commercial or recreational vessel of the same length will be applied	

All fees quoted are inclusive of GST and should be paid in advance, unless otherwise specified in writing.

\* For administration purposes vessel accommodation fees are calculated using the percentage specified for the relevant payment option, rounded to 0 cents or 5 cents and allowing for whole GST cents where possible.



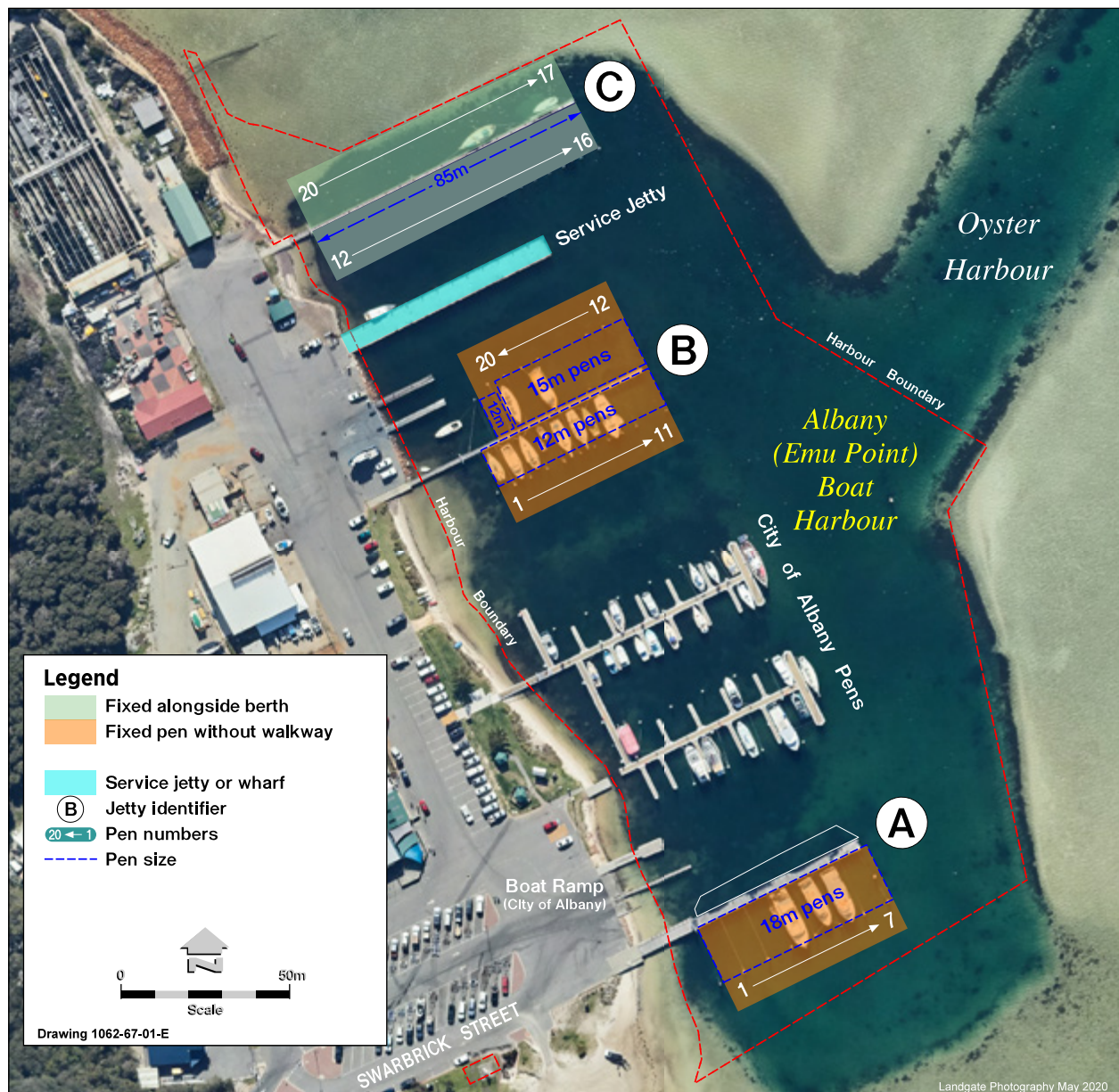
# Albany (Emu Point) Boat Harbour

## Vessel Accommodation 2025-26

Length of stay	Fixed pen without walkway (Charged per metre of the pen length)	Fixed alongside berth (Charged per metre of the vessel length)
12 months	\$ 502.60	\$ 588.80
3 months or more per month	\$ 45.85	\$ 53.70
1 month	\$ 75.35	\$ 88.30
1 week	\$ 22.60	\$ 26.45

All fees quoted are inclusive of GST and should be paid in advance, unless otherwise specified in writing.  
Guidance note: For other fees and charges not listed above please refer to Statewide fees.

## Vessel Accommodation Plan (Extract)



Length of stay	Floating pen with walkway (Charged per metre of the pen length)	Floating alongside berth (Charged per metre of the vessel length)	Fixed alongside berth (Charged per metre of the vessel length)
12 months	\$ 736.00	\$ 736.00	\$ 588.80
3 months or more per month	\$ 67.15	\$ 67.15	\$ 53.70
1 month	\$ 110.40	\$ 110.40	\$ 88.30
1 week	\$ 33.10	\$ 33.10	\$ 26.45

## Vessel Accommodation Plan (Extract)





# Augusta Boat Harbour

## Vessel Accommodation 2025-26

Length of stay	Floating pen with walkway (Charged per metre of the pen length)	Floating alongside berth (Charged per metre of the vessel length)
12 months	\$ 736.00	\$ 736.00
3 months or more per month	\$ 67.15	\$ 67.15
1 month	\$ 110.40	\$ 110.40
1 week	\$ 33.10	\$ 33.10

All fees quoted are inclusive of GST and should be paid in advance, unless otherwise specified in writing.  
Guidance note: For other fees and charges not listed above please refer to Statewide fees.

## Vessel Accommodation Plan (Extract)

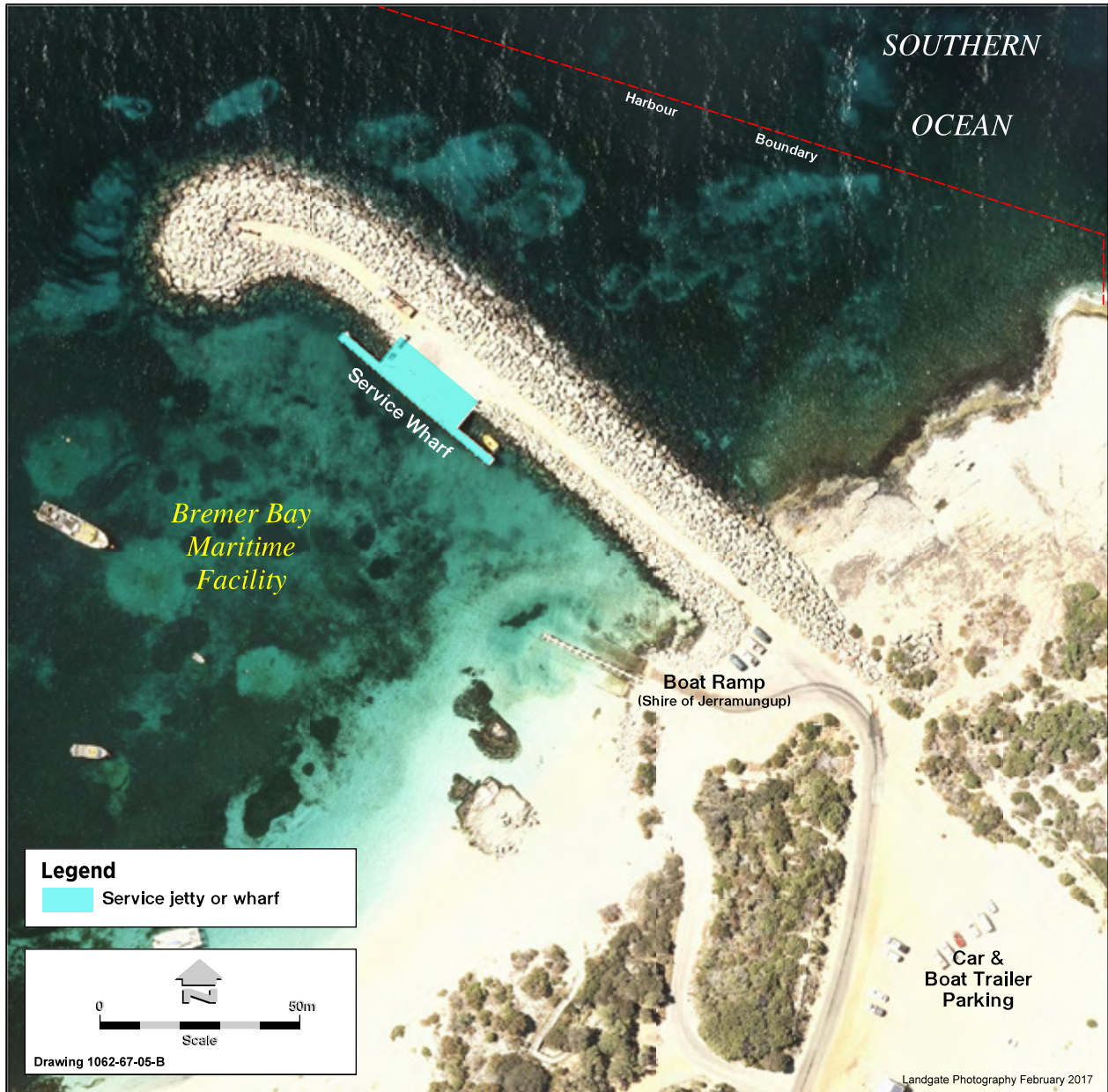




# Bremer Bay Maritime Facility

For fees and charges for this facility please refer to Statewide fees.

## Vessel Accommodation Plan (Extract)



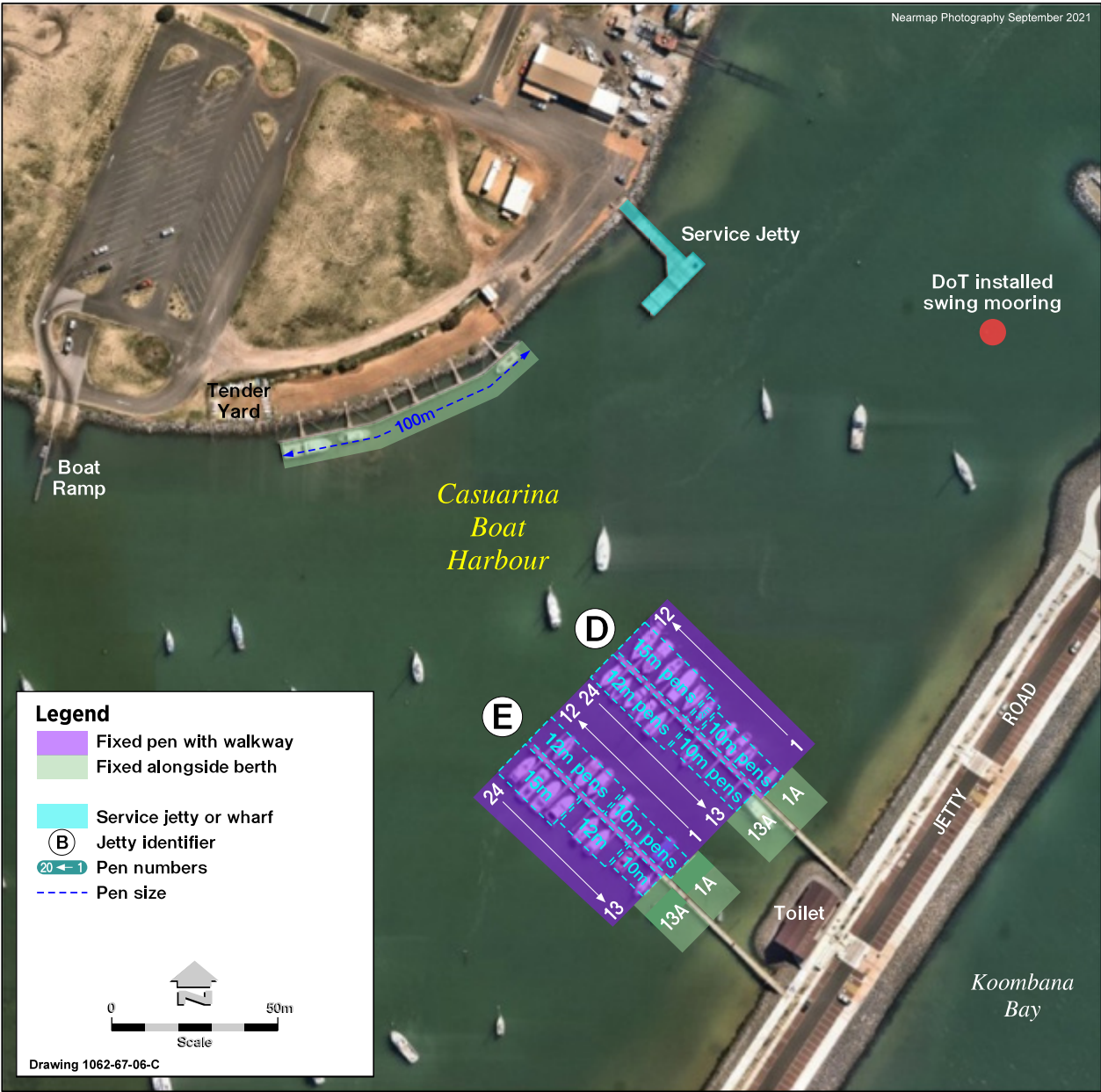
# Bunbury (Casuarina) Boat Harbour

## Vessel Accommodation 2025-26

Length of stay	Fixed pen with walkway (Charged per metre of the pen length)	Fixed alongside berth (Charged per metre of the vessel length)
12 months	\$ 588.80	\$ 588.80
3 months or more per month	\$ 53.70	\$ 53.70
1 month	\$ 88.30	\$ 88.30
1 week	\$ 26.45	\$ 26.45

All fees quoted are inclusive of GST and should be paid in advance, unless otherwise specified in writing.  
Guidance note: For other fees and charges not listed above please refer to Statewide fees.

## Vessel Accommodation Plan (Extract)





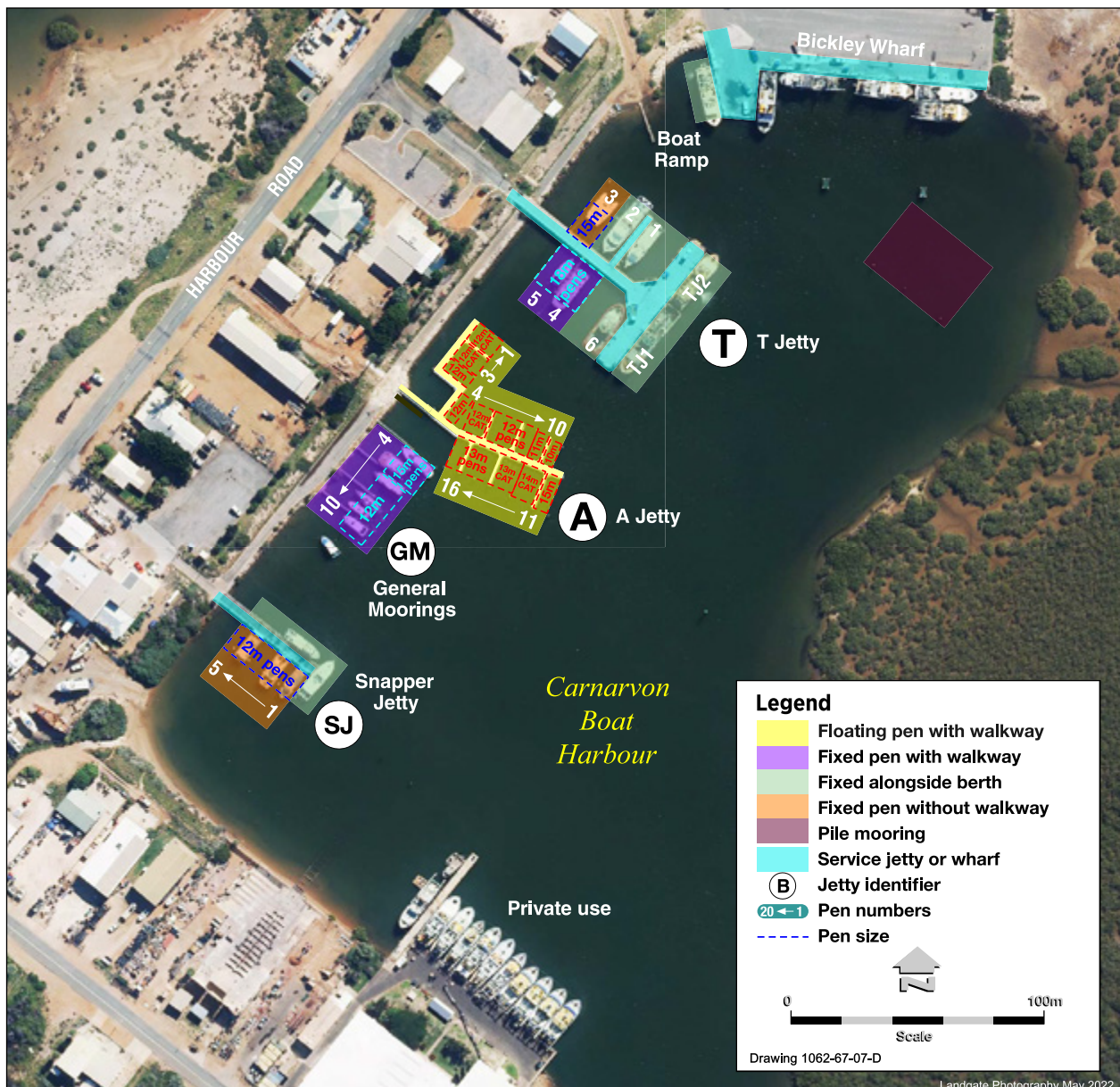
# Carnarvon Boat Harbour

## Vessel Accommodation 2025-26

Length of stay	Fixed pen without walkway (Charged per metre of the pen length)	Fixed pen with walkway (Charged per metre of the pen length)	Floating pen with walkway (Charged per metre of the pen length)	Fixed alongside berth (Charged per metre of the vessel length)	Pile moorings (Charged per metre of the vessel length)
12 months	\$ 515.20	\$ 578.80	\$ 736.00	\$ 588.80	\$ 294.40
3 months or more per month	\$ 47.00	\$ 52.80	\$ 67.15	\$ 53.70	\$ 26.85
1 month	\$ 77.25	\$ 86.80	\$ 110.40	\$ 88.30	\$ 44.15
1 week	\$ 23.15	\$ 26.00	\$ 33.10	\$ 26.45	\$ 13.20

All fees quoted are inclusive of GST and should be paid in advance, unless otherwise specified in writing.  
Guidance note: For other fees and charges not listed above please refer to Statewide fees.

## Vessel Accommodation Plan (Extract)

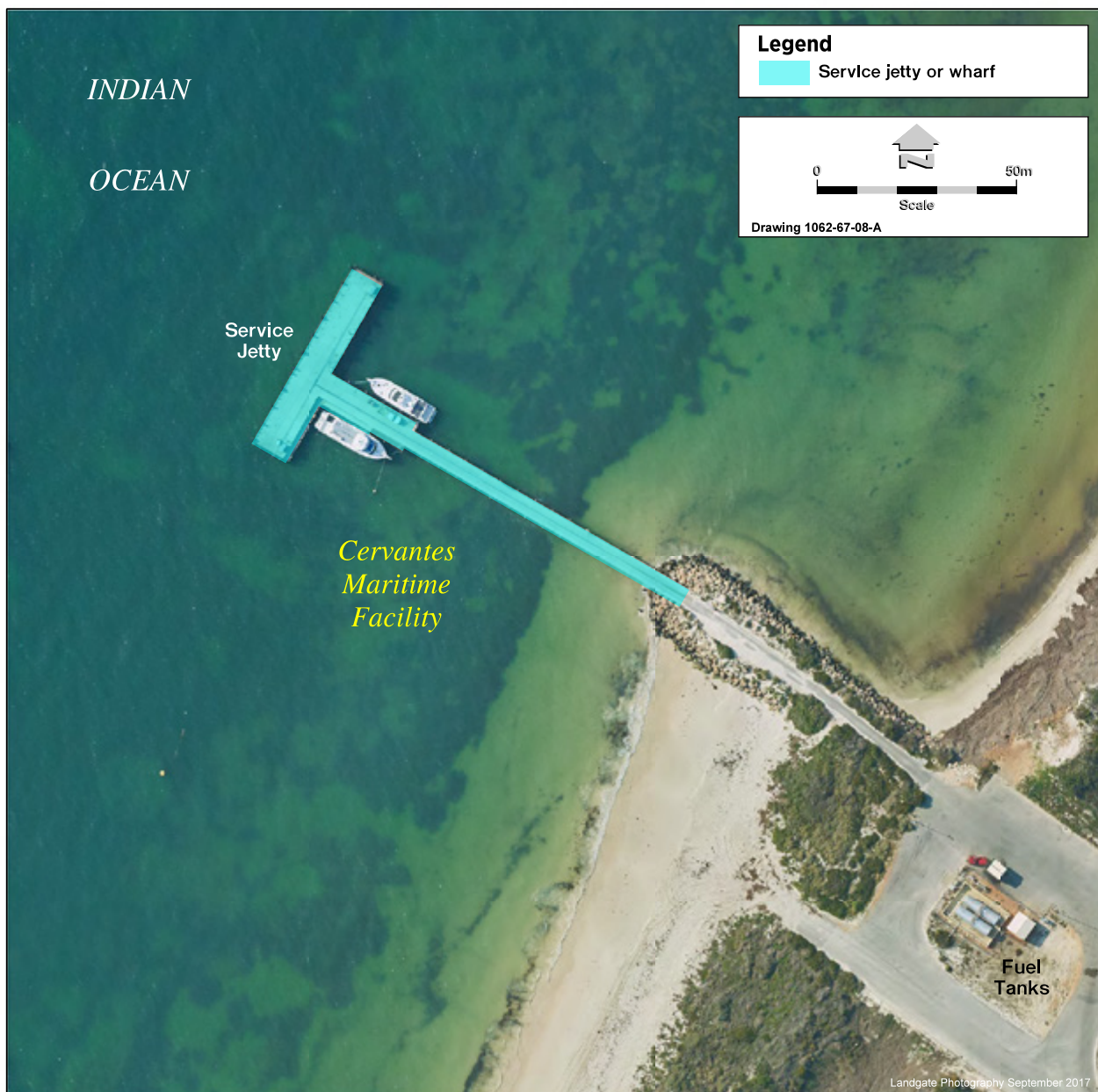




# Cervantes Maritime Facility

For fees and charges for this facility please refer to Statewide fees.

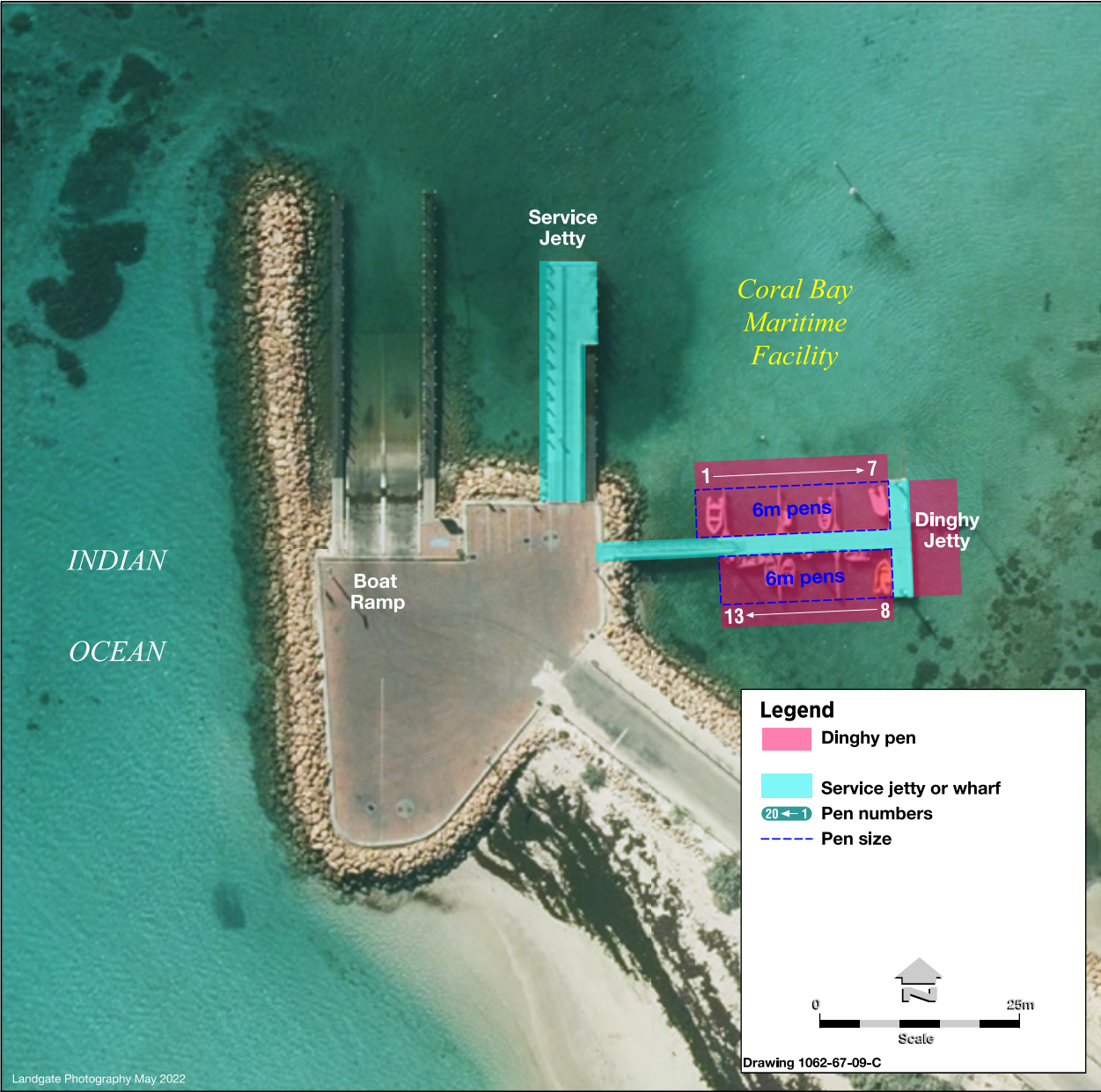
## Vessel Accommodation Plan (Extract)



# Coral Bay Maritime Facility

For fees and charges for this facility please refer to Statewide fees.

## Vessel Accommodation Plan (Extract)





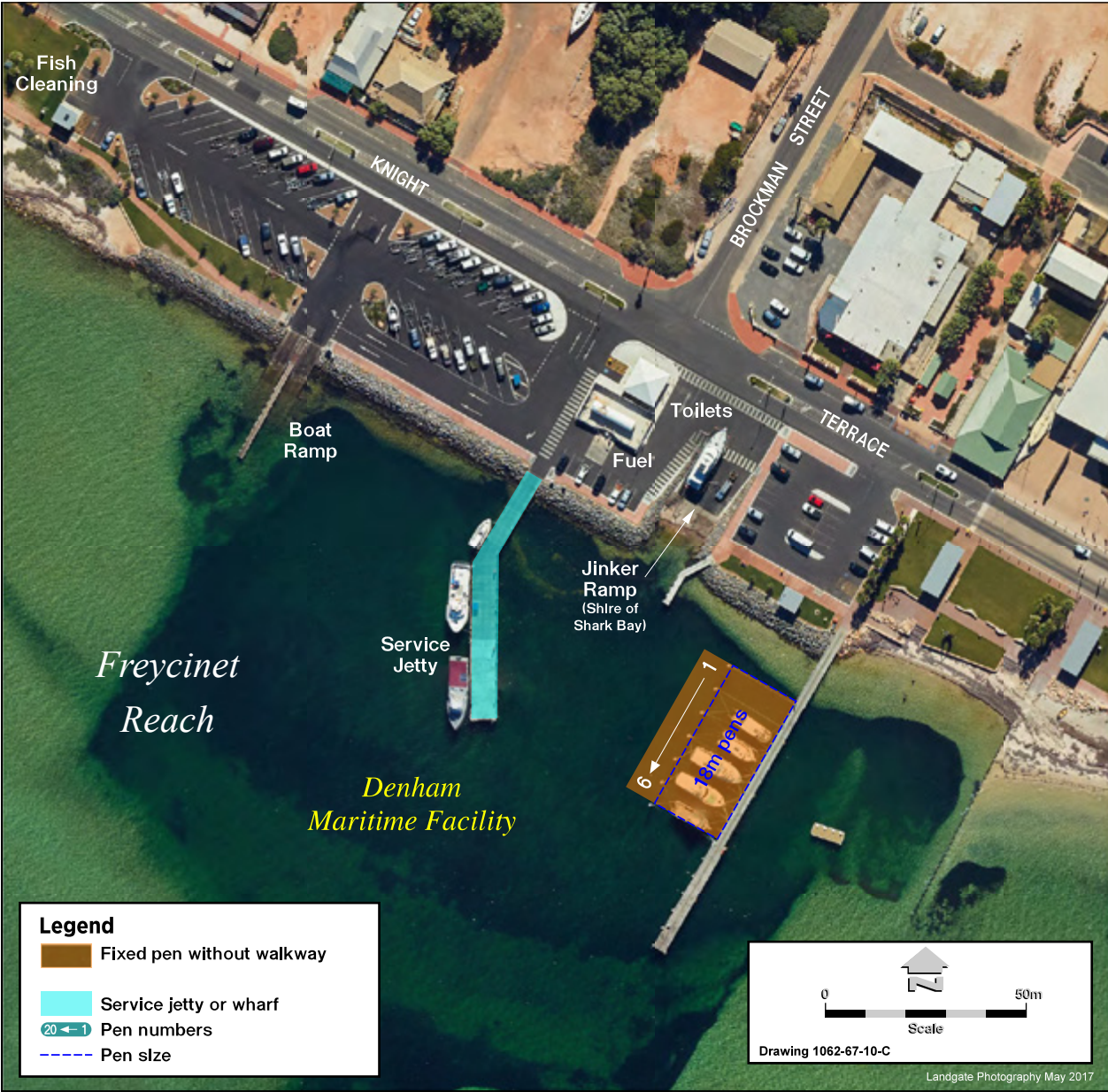
# Denham Maritime Facility

## Vessel Accommodation 2025-26

Length of stay	Fixed pen without walkway (Charged per metre of the pen length)
12 months	\$ 515.20
3 months or more per month	\$ 47.00
1 month	\$ 77.25
1 week	\$ 23.15

All fees quoted are inclusive of GST and should be paid in advance, unless otherwise specified in writing.  
Guidance note: For other fees and charges not listed above please refer to Statewide fees.

## Vessel Accommodation Plan (Extract)





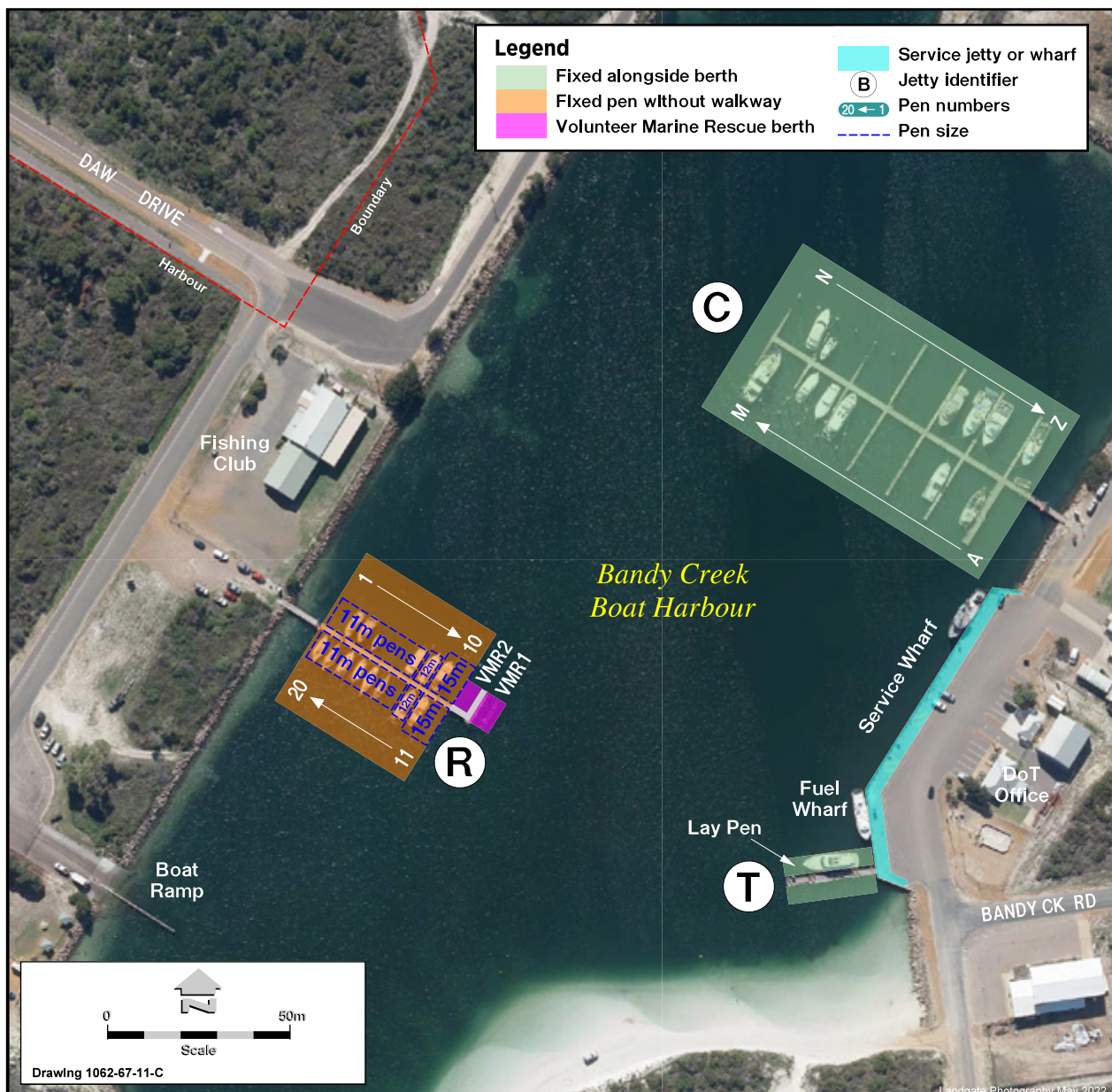
# Esperance (Bandy Creek) Boat Harbour

## Vessel Accommodation 2025-26

Length of stay	Fixed pen without walkway (Charged per metre of the pen length)	Fixed alongside berth (Charged per metre of the vessel length)
12 months	\$ 491.00	\$ 588.80
3 months or more per month	\$ 44.80	\$ 53.70
1 month	\$ 73.65	\$ 88.30
1 week	\$ 22.05	\$ 26.45

All fees quoted are inclusive of GST and should be paid in advance, unless otherwise specified in writing.  
Guidance note: For other fees and charges not listed above please refer to Statewide fees.

## Vessel Accommodation Plan (Extract)



# Exmouth Boat Harbour

## Vessel Accommodation 2025-26

### RECREATIONAL / TOURISM / GOVERNMENT / FISHING VESSELS

Length of stay	Fixed pen with walkway (Charged per metre of the pen length)	Floating pen with walkway up to 20m (Charged per metre of the pen length)	25m pen with walkway (tropical cyclone zone) (Charged per metre of the pen length)	Fixed alongside berth (Charged per metre of the vessel length)	Floating alongside berth (Charged per metre of the vessel length)
12 months	\$ 588.80	\$ 736.00	\$ 1,177.60	\$ 588.80	\$ 736.00
3 months or more per month	\$ 53.70	\$ 67.15	\$ 107.45	\$ 53.70	\$ 67.15
1 month	\$ 88.30	\$ 110.40	\$ 176.60	\$ 88.30	\$ 110.40
1 week	\$ 26.45	\$ 33.10	\$ 52.95	\$ 26.45	\$ 33.10

### SERVICE VESSELS

Length of stay	Fixed pen with walkway (Charged per metre of the pen length)	Floating pen with walkway up to 20m (Charged per metre of the pen length)	25m pen with walkway (tropical cyclone zone) (Charged per metre of the pen length)	Fixed alongside berth (Charged per metre of the vessel length)	Floating alongside berth (Charged per metre of the vessel length)
12 months	\$ 809.60	\$ 956.80	\$ 1,177.60	\$ 809.60	\$ 956.80
3 months or more per month	\$ 73.85	\$ 87.30	\$ 107.45	\$ 73.85	\$ 87.30
1 month	\$ 121.40	\$ 143.50	\$ 176.60	\$ 121.40	\$ 143.50
1 week	\$ 36.40	\$ 43.05	\$ 52.95	\$ 36.40	\$ 43.05

For service vessel use of pen with walkway or alongside berth

per day, per metre of the vessel length	\$ 13.45
---	----------

### Use of service wharf

For service vessel short term use of the service wharf, other than while refuelling, for each 6 hour period or part thereof

per metre of the vessel length	\$ 10.35
--------------------------------	----------

All fees quoted are inclusive of GST and should be paid in advance, unless otherwise specified in writing.

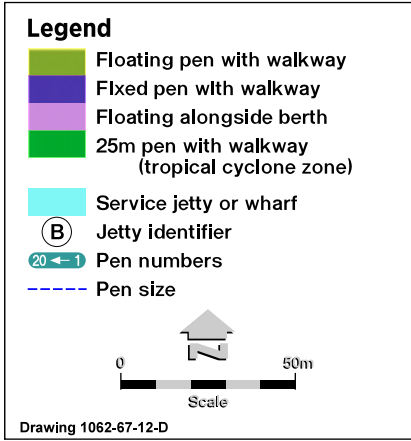
Guidance note: For other fees and charges not listed above please refer to Statewide fees.

Vessel Accommodation Plan following page



# Exmouth Boat Harbour

## Vessel Accommodation Plan (Extract)



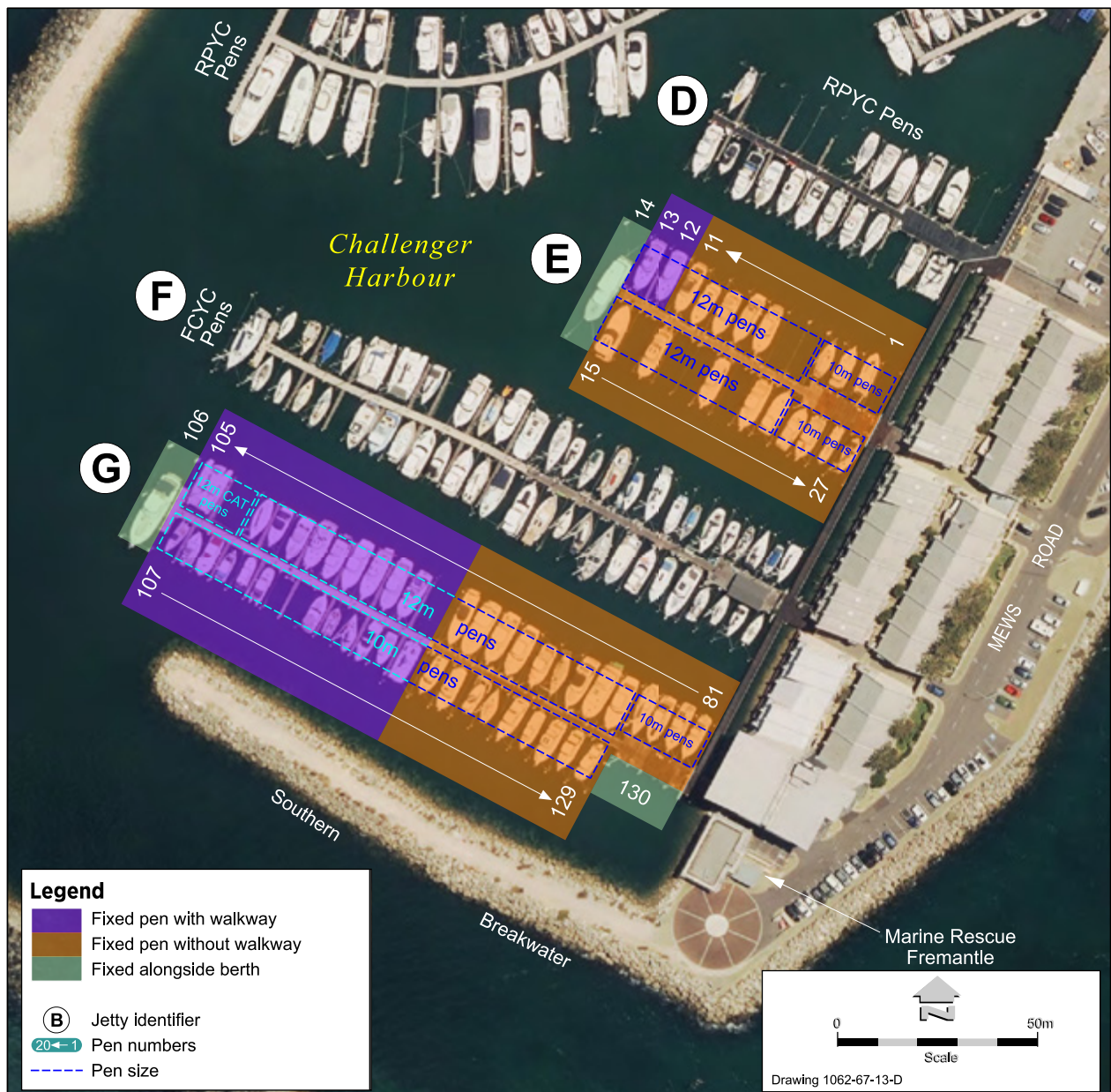
# Fremantle (Challenger) Boat Harbour

## Vessel Accommodation 2025-26

Length of stay	Fixed pen without walkway (Charged per metre of the pen length)	Fixed pen with walkway (Charged per metre of the pen length)	Fixed alongside berth (Charged per metre of the vessel length)
12 months	\$ 515.20	\$ 588.80	\$ 588.80
3 months or more per month	\$ 47.00	\$ 53.70	\$ 53.70
1 month	\$ 77.25	\$ 88.30	\$ 88.30
1 week	\$ 23.15	\$ 26.45	\$ 26.45

All fees quoted are inclusive of GST and should be paid in advance, unless otherwise specified in writing.  
Guidance note: For other fees and charges not listed above please refer to Statewide fees.

## Vessel Accommodation Plan (Extract)





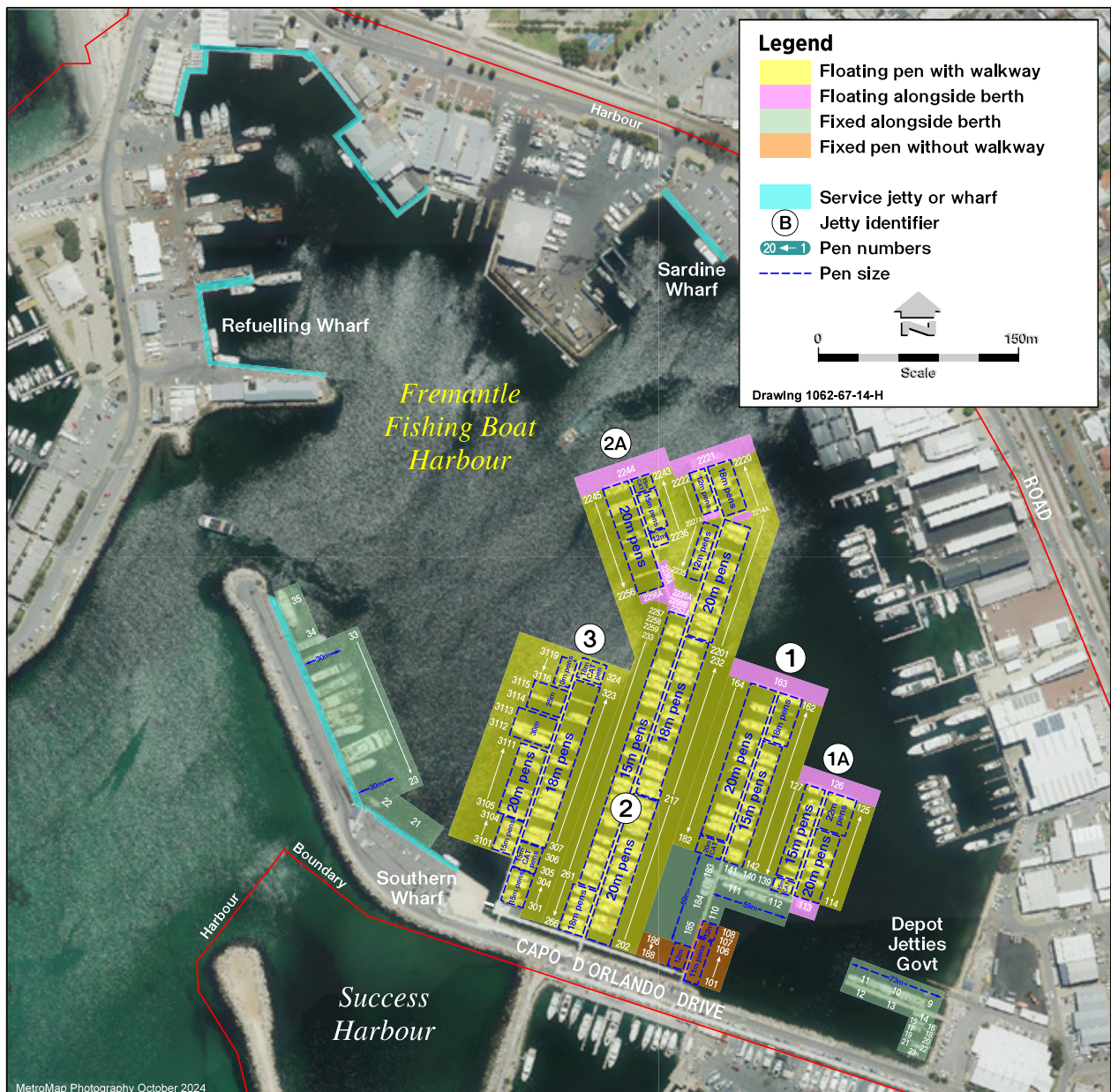
# Fremantle Fishing Boat Harbour

## Vessel Accommodation 2025-26

Length of stay	Fixed pen without walkway (Charged per metre of the pen length)	Fixed alongside berth (Charged per metre of the vessel length)	Floating pen with walkway (Charged per metre of the pen length)	Floating alongside berth (Charged per metre of the vessel length)
12 months	\$ 515.20	\$ 588.80	\$ 736.00	\$ 736.00
3 months or more per month	\$ 47.00	\$ 53.70	\$ 67.15	\$ 67.15
1 month	\$ 77.25	\$ 88.30	\$ 110.40	\$ 110.40
1 week	\$ 23.15	\$ 26.45	\$ 33.10	\$ 33.10

All fees quoted are inclusive of GST and should be paid in advance, unless otherwise specified in writing.  
Guidance note: For other fees and charges not listed above please refer to Statewide fees.

## Vessel Accommodation Plan (Extract)



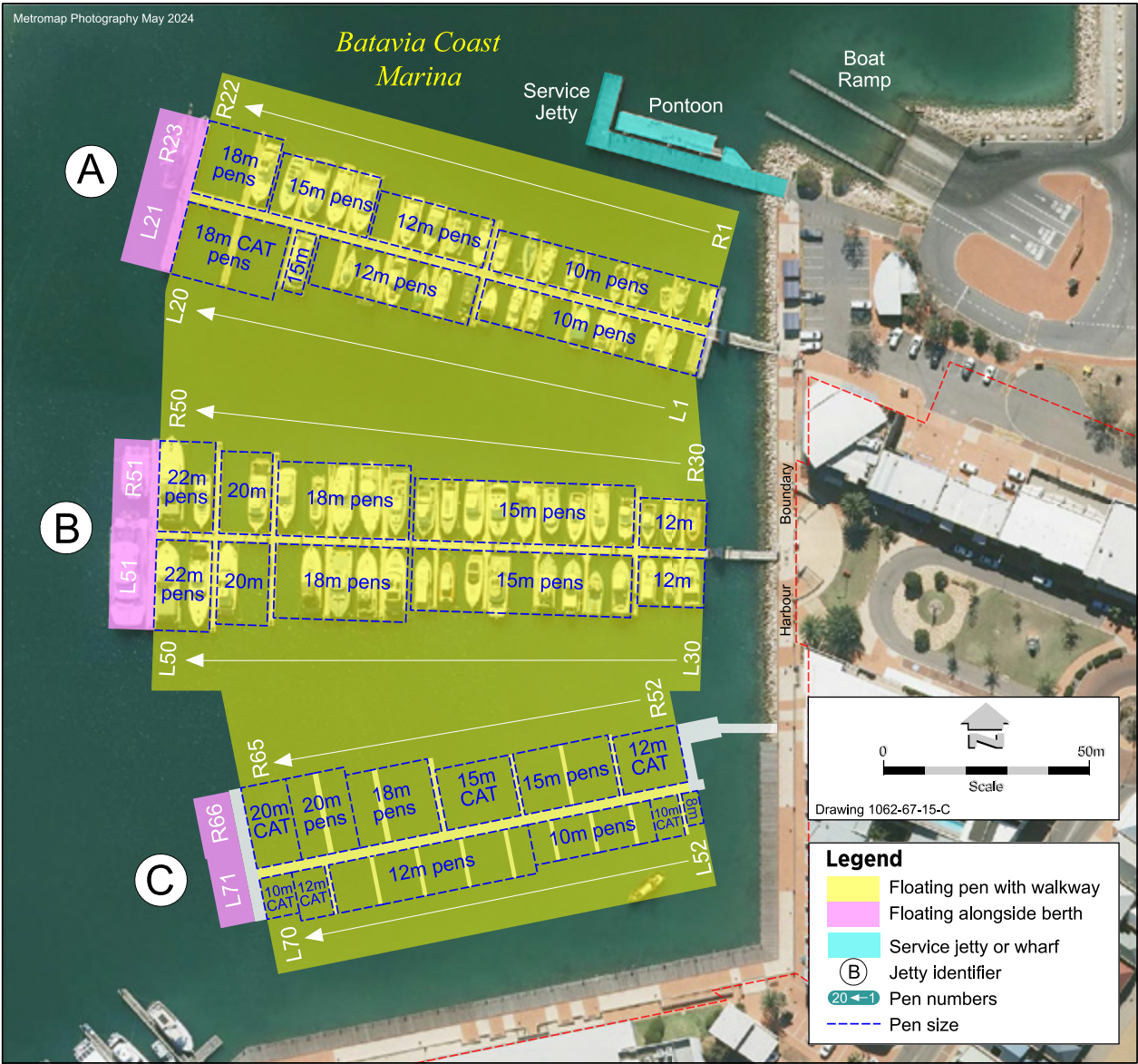
# Geraldton (Batavia Coast) Marina

## Vessel Accommodation 2025-26

Length of stay	Floating pen with walkway (Charged per metre of the pen length)	Floating alongside berth (Charged per metre of the vessel length)
12 months	\$ 736.00	\$ 736.00
3 months or more per month	\$ 67.15	\$ 67.15
1 month	\$ 110.40	\$ 110.40
1 week	\$ 33.10	\$ 33.10

All fees quoted are inclusive of GST and should be paid in advance, unless otherwise specified in writing.  
Guidance note: For other fees and charges not listed above please refer to Statewide fees.

## Vessel Accommodation Plan (Extract)





# Green Head Maritime Facility

For fees and charges for this facility please refer to Statewide fees.

## Vessel Accommodation Plan (Extract)



# Hillarys Boat Harbour

## Vessel Accommodation 2025-26

Length of stay	Floating pen with walkway (Charged per metre of the pen length)	Floating alongside berth (Charged per metre of the vessel length)
12 months	\$ 736.00	\$ 736.00
3 months or more per month	\$ 67.15	\$ 67.15
1 month	\$ 110.40	\$ 110.40
1 week	\$ 33.10	\$ 33.10

### Vehicle and boat trailer parking

Parking fee per day, per boat trailer or vehicle with boat trailer	\$ 10.40
Annual pass	\$ 164.40

All fees quoted are inclusive of GST and should be paid in advance, unless otherwise specified in writing.  
Guidance note: For other fees and charges not listed above please refer to Statewide fees.

Vessel Accommodation Plan following page



*New pens at Hillarys Boat Harbour*



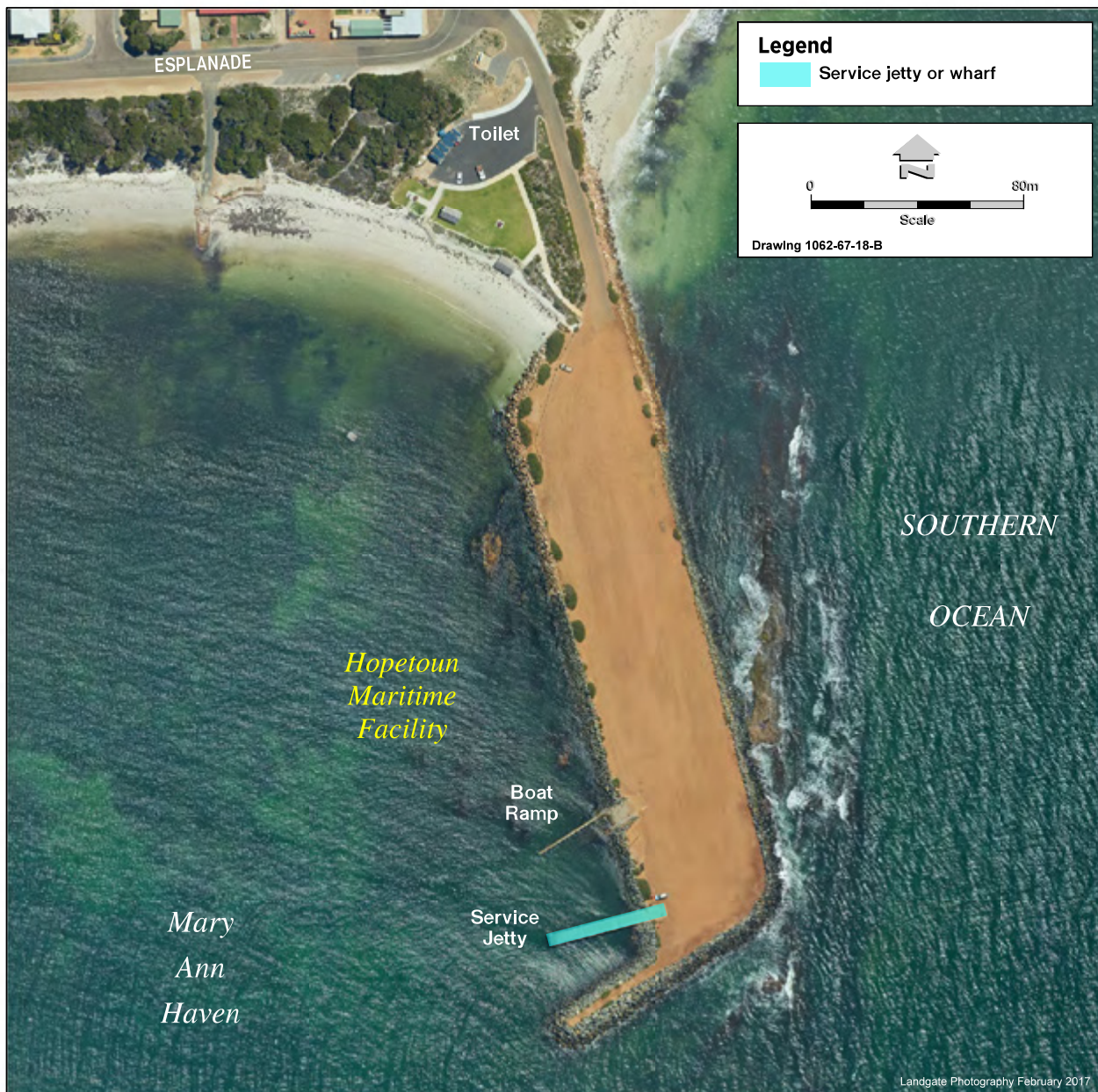




# Hopetoun Maritime Facility

For fees and charges for this facility please refer to Statewide fees.

## Vessel Accommodation Plan (Extract)

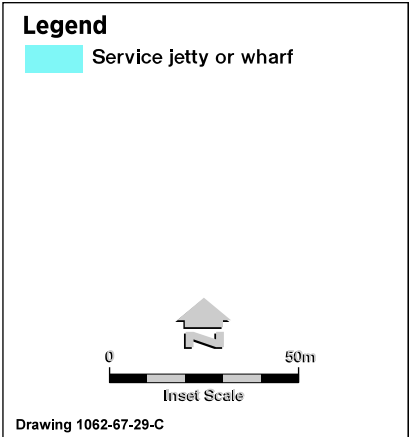
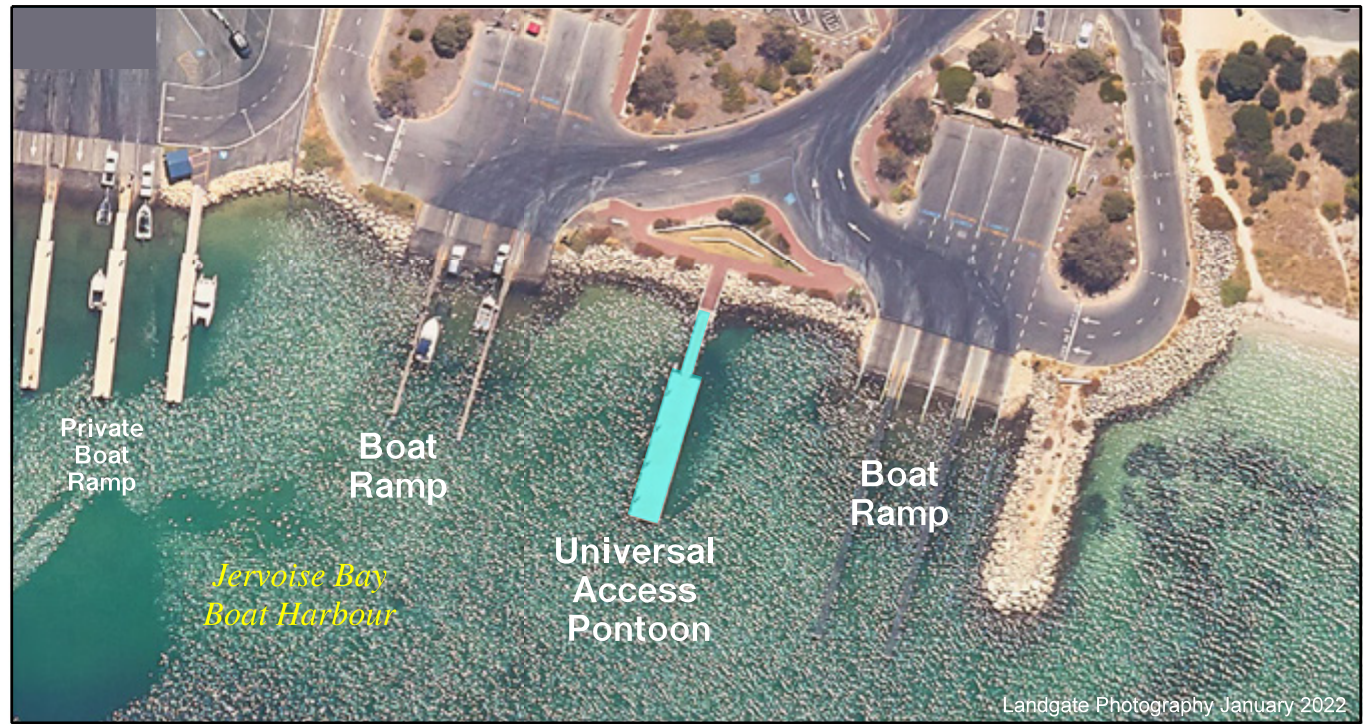




# Jervoise Bay Boat Harbour

For fees and charges for this facility please refer to Statewide fees.

## Vessel Accommodation Plan (Extract)



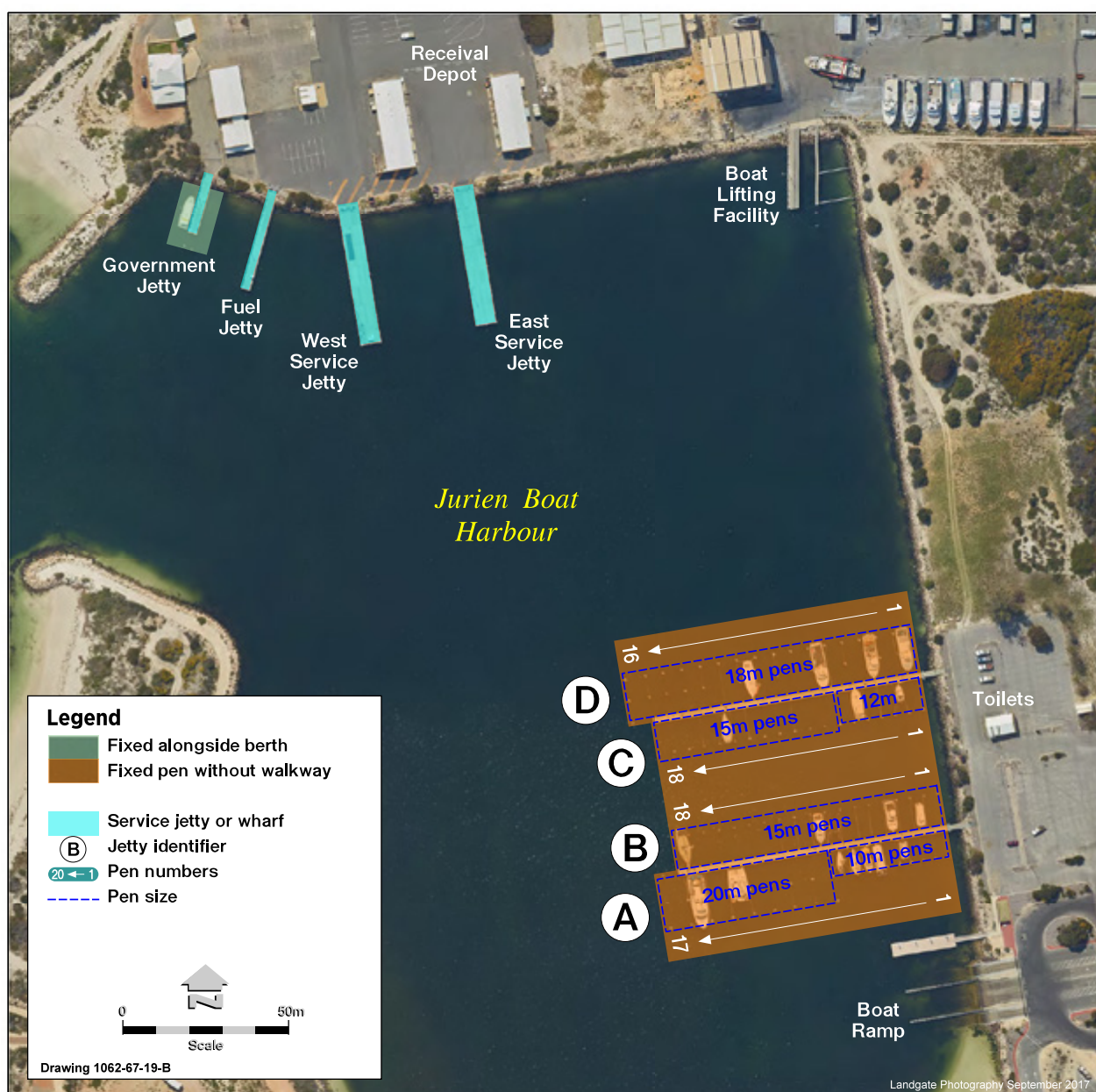
# Jurien Boat Harbour

## Vessel Accommodation 2025-26

Length of stay	Fixed pen without walkway (Charged per metre of the pen length)	Fixed alongside berth (Charged per metre of the vessel length)
12 months	\$ 515.20	\$ 588.80
3 months or more per month	\$ 47.00	\$ 53.70
1 month	\$ 77.25	\$ 88.30
1 week	\$ 23.15	\$ 26.45

All fees quoted are inclusive of GST and should be paid in advance, unless otherwise specified in writing.  
Guidance note: For other fees and charges not listed above please refer to Statewide fees.

## Vessel Accommodation Plan (Extract)





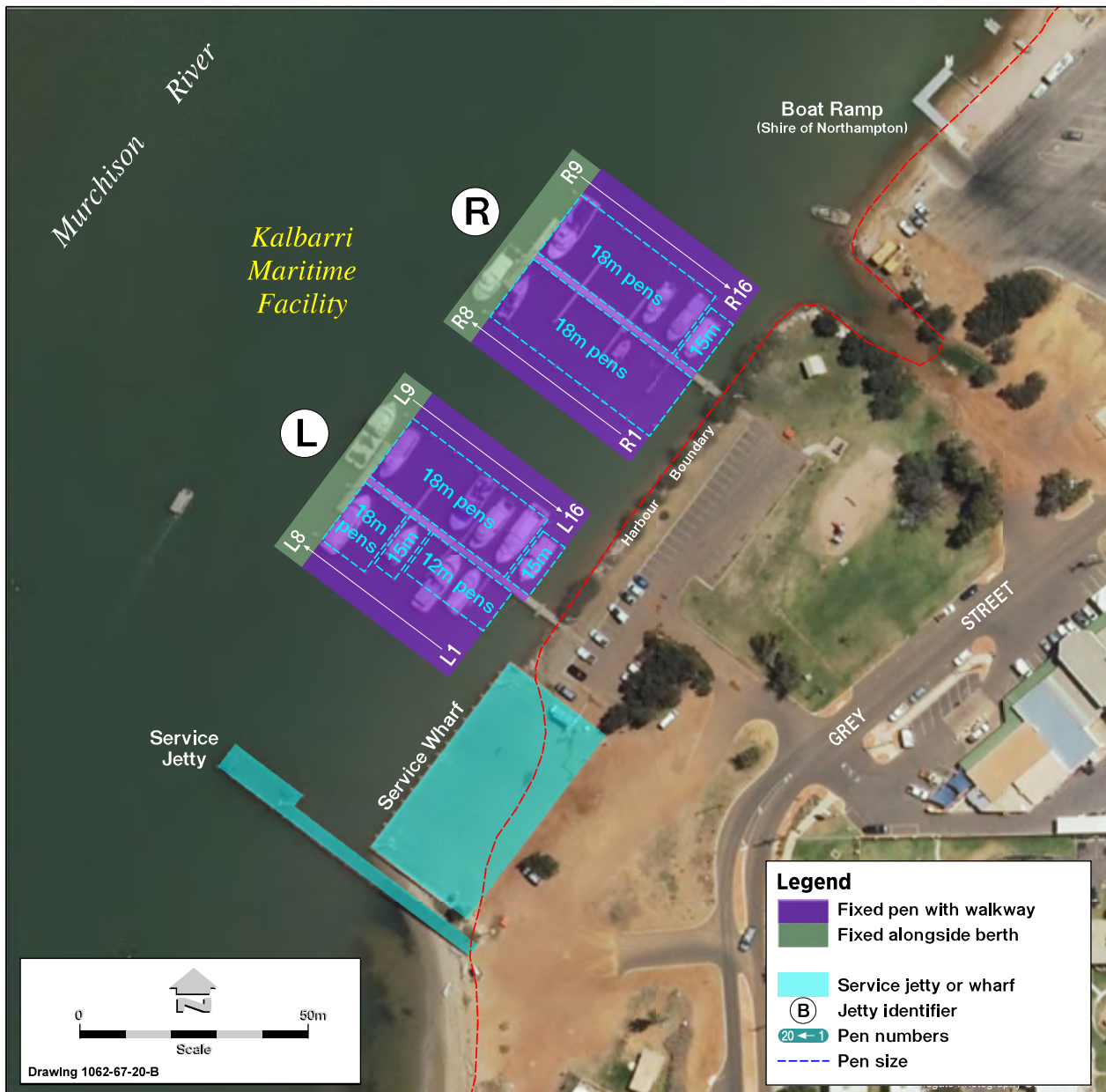
# Kalbarri Maritime Facility

## Vessel Accommodation 2025-26

Length of stay	Fixed pen with walkway (Charged per metre of the pen length)	Fixed alongside berth (Charged per metre of the vessel length)
12 months	\$ 588.80	\$ 588.80
3 months or more per month	\$ 53.70	\$ 53.70
1 month	\$ 88.30	\$ 88.30
1 week	\$ 26.45	\$ 26.45

All fees quoted are inclusive of GST and should be paid in advance, unless otherwise specified in writing.  
Guidance note: For other fees and charges not listed above please refer to Statewide fees.

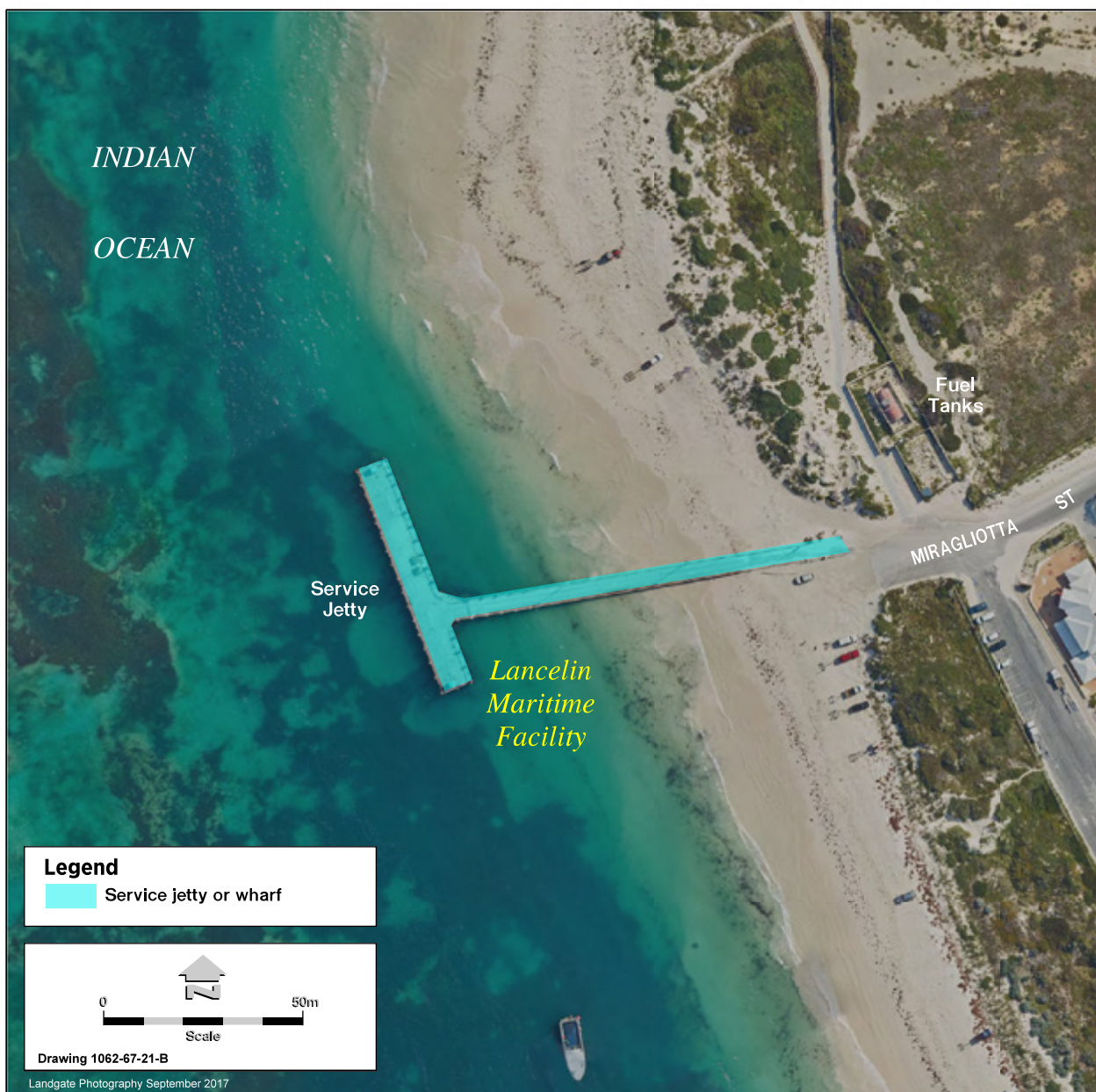
## Vessel Accommodation Plan (Extract)



# Lancelin Maritime Facility

For fees and charges for this facility please refer to Statewide fees.

## Vessel Accommodation Plan (Extract)

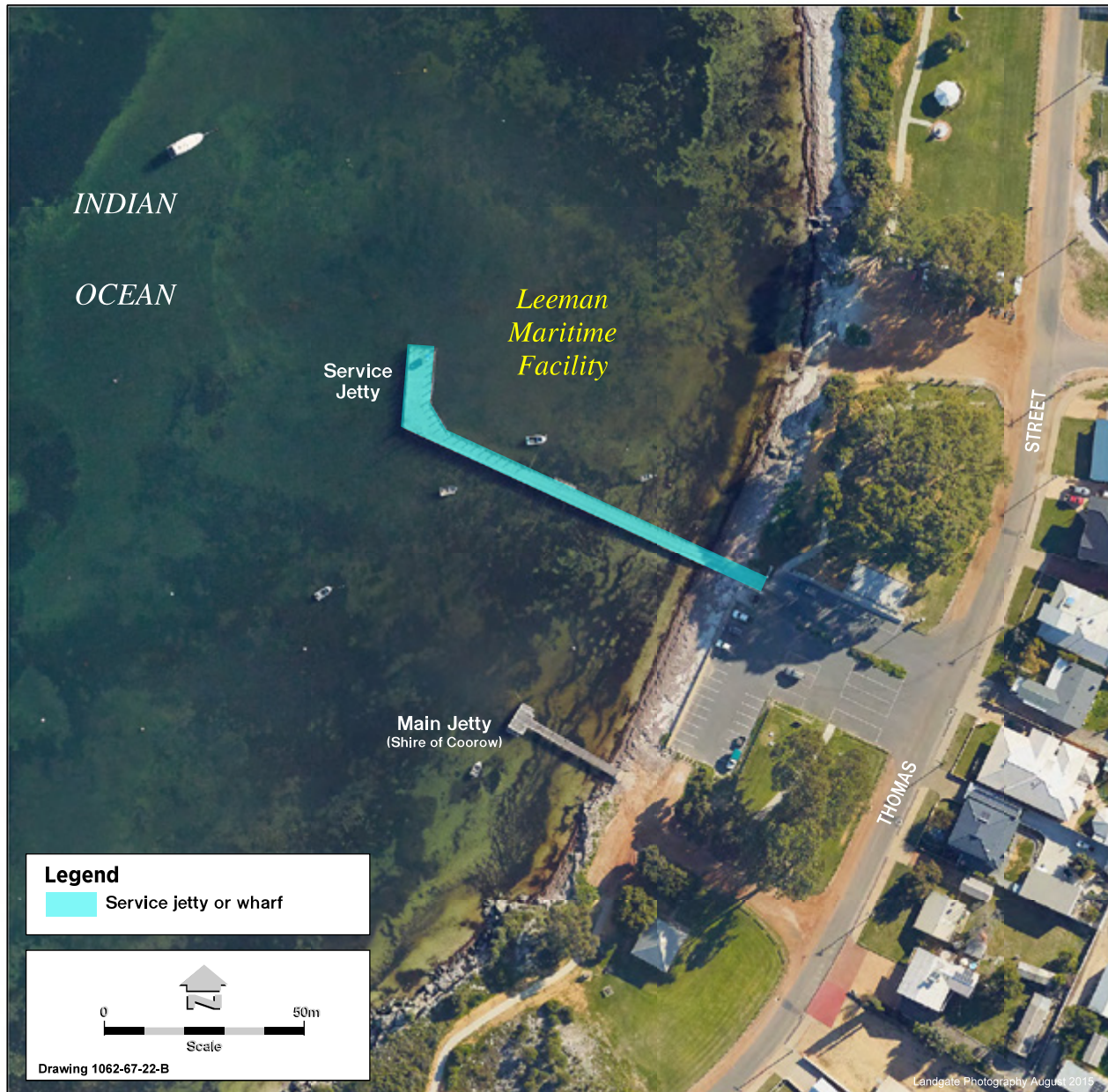




# Leeman Maritime Facility

For fees and charges for this facility please refer to Statewide fees.

## Vessel Accommodation Plan (Extract)



# Onslow (Beadon Creek) Maritime Facility

## Vessel Accommodation 2025-26

### RECREATIONAL / TOURISM / GOVERNMENT / FISHING VESSELS

Length of stay	Pile moorings (Charged per metre of the vessel length)	Fixed alongside berth (Charged per metre of the vessel length)
12 months	\$ 294.40	N/A
3 months or more per month	\$ 26.85	N/A
1 month	\$ 44.15	\$ 88.30
1 week	\$ 13.20	\$ 26.45

### SERVICE VESSELS

Length of stay	Pile moorings (Charged per metre of the vessel length)
12 months	\$ 515.20
3 months or more per month	\$ 47.00
1 month	\$ 77.25
1 week	\$ 23.15
1 day	\$ 12.00

### Use of service wharf

For service vessel use of service wharf, per 6 consecutive hours or part thereof

per metre of the vessel length	\$ 10.35
--------------------------------	----------

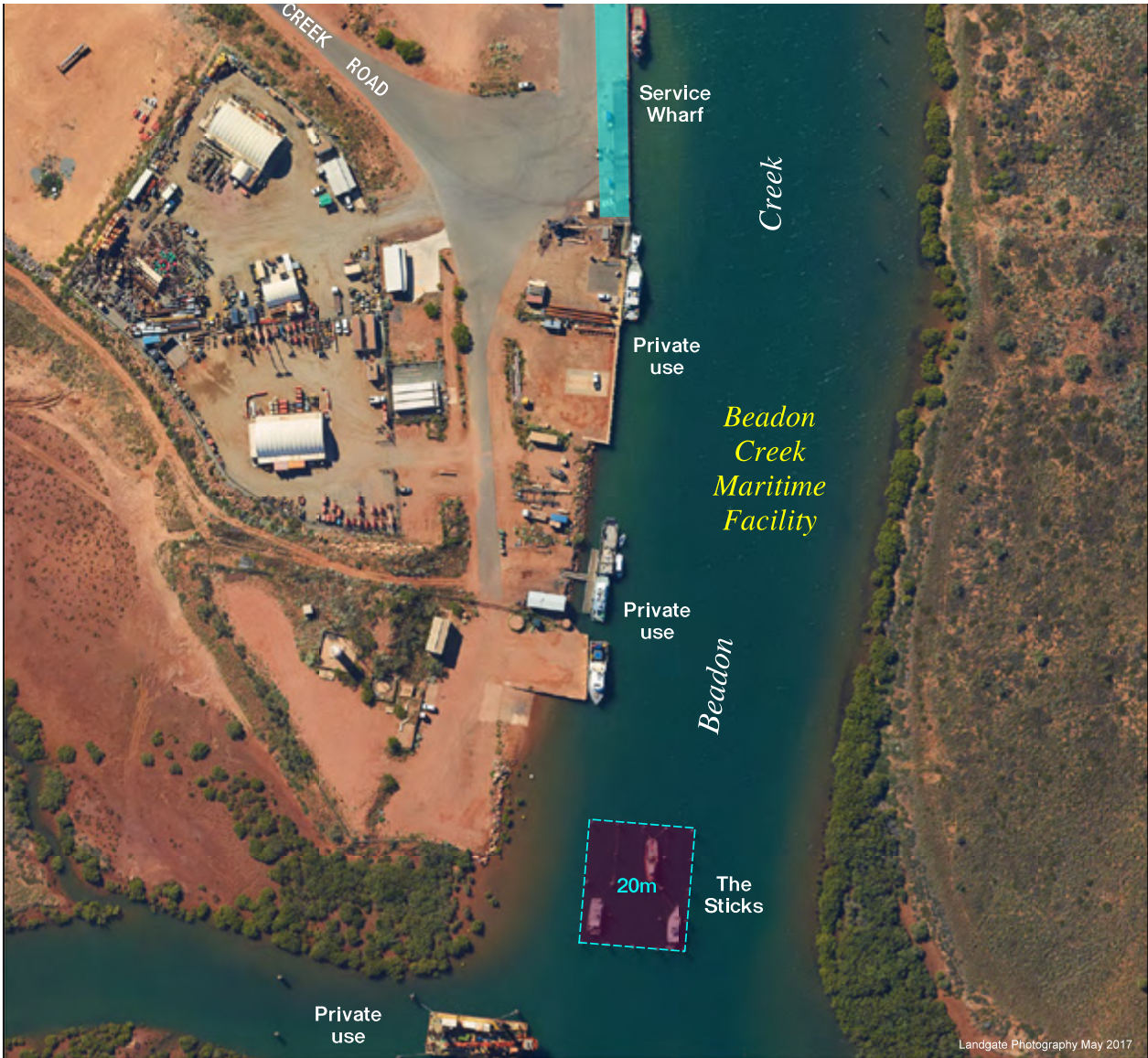
All fees quoted are inclusive of GST and should be paid in advance, unless otherwise specified in writing.  
Guidance note: For other fees and charges not listed above please refer to Statewide fees.

Vessel Accommodation Plan following page



# Onslow (Beadon Creek) Maritime Facility

## Vessel Accommodation Plan (Extract)



**Legend**

Pile mooring

Service jetty or wharf

Pen size

0

100m

Scale

Drawing 1062-67-23-B

# Point Samson (Johns Creek) Boat Harbour

## Vessel Accommodation 2025-26

### RECREATIONAL / TOURISM / GOVERNMENT / FISHING VESSELS

Length of stay	Fixed alongside berth For use of berth at service wharf or jetty (Charged per metre of the vessel length)
12 months	\$ 588.80
3 months or more per month	\$ 53.70
1 month	\$ 88.30
1 week	\$ 26.45

### SERVICE VESSELS

Length of stay	Fixed alongside berth For use of berth at service wharf or jetty (Charged per metre of the vessel length)
12 months	\$ 809.60
3 months or more per month	\$ 73.85
1 month	\$ 121.40
1 week	\$ 36.40

#### Service wharf & service jetty

For service vessel for use of service wharf or jetty

per metre of the vessel length, per 6 consecutive hours or part thereof \$ 10.35

#### Careening pad

Use of careening pad per day for a vessel

not over 15 metres in length	\$ 248.40
over 15 metres in length	\$ 362.65

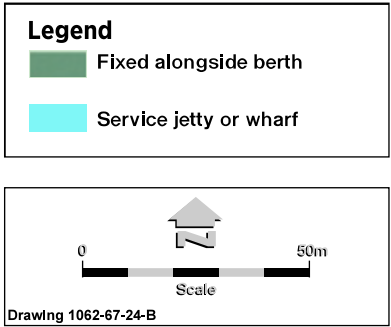
All fees quoted are inclusive of GST and should be paid in advance, unless otherwise specified in writing.  
Guidance note: For other fees and charges not listed above please refer to Statewide fees.

Vessel Accommodation Plan following page



# Point Samson (Johns Creek) Boat Harbour

## Vessel Accommodation Plan (Extract)



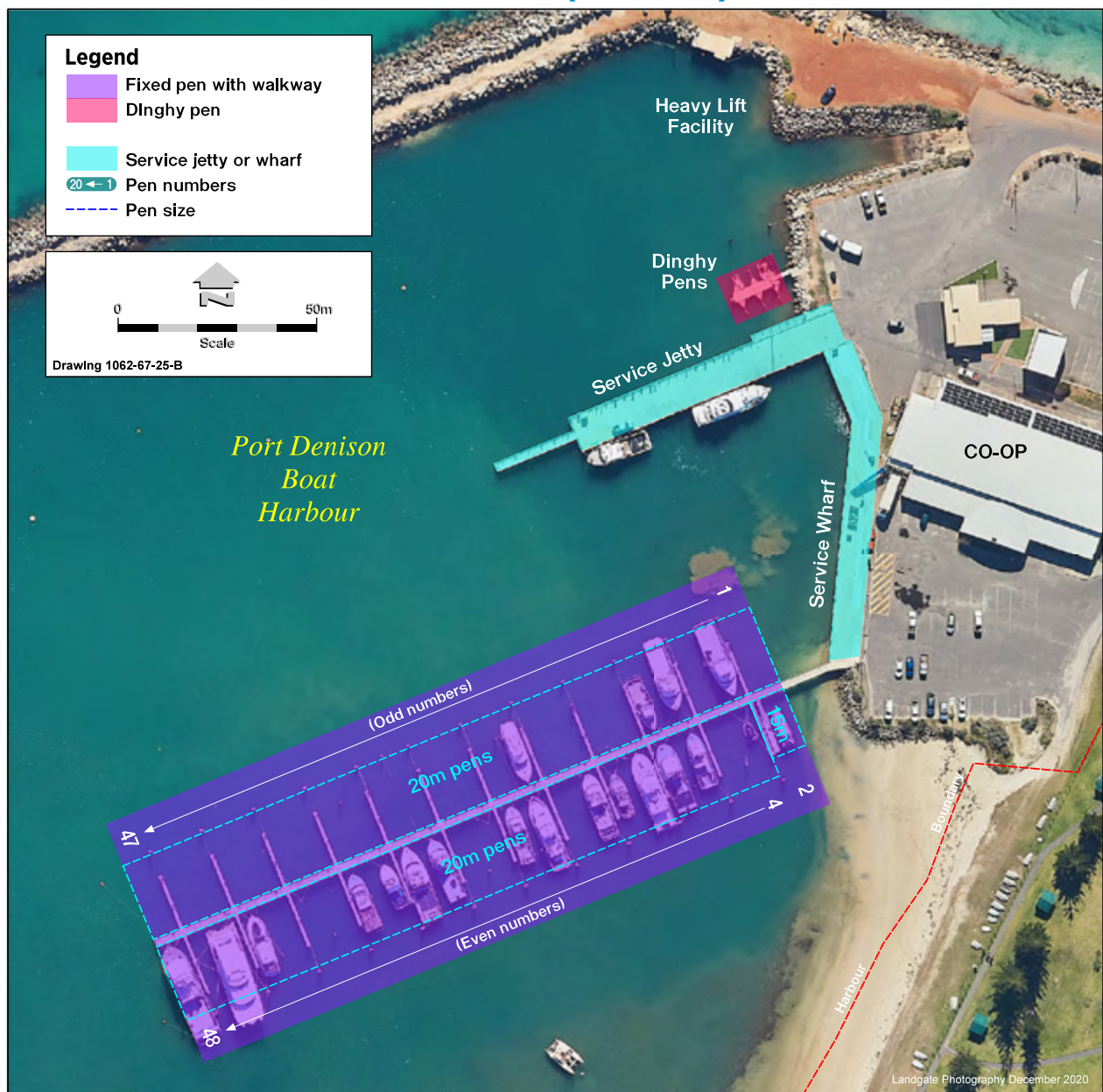
# Port Denison Boat Harbour

## Vessel Accommodation 2025-26

Length of stay	Fixed pen with walkway (Charged per metre of the pen length)	Fixed alongside berth (Charged per metre of the vessel length)
12 months	\$ 588.80	\$ 588.80
3 months or more per month	\$ 53.70	\$ 53.70
1 month	\$ 88.30	\$ 88.30
1 week	\$ 26.45	\$ 26.45

All fees quoted are inclusive of GST and should be paid in advance, unless otherwise specified in writing.  
Guidance note: For other fees and charges not listed above please refer to Statewide fees.

## Vessel Accommodation Plan (Extract)

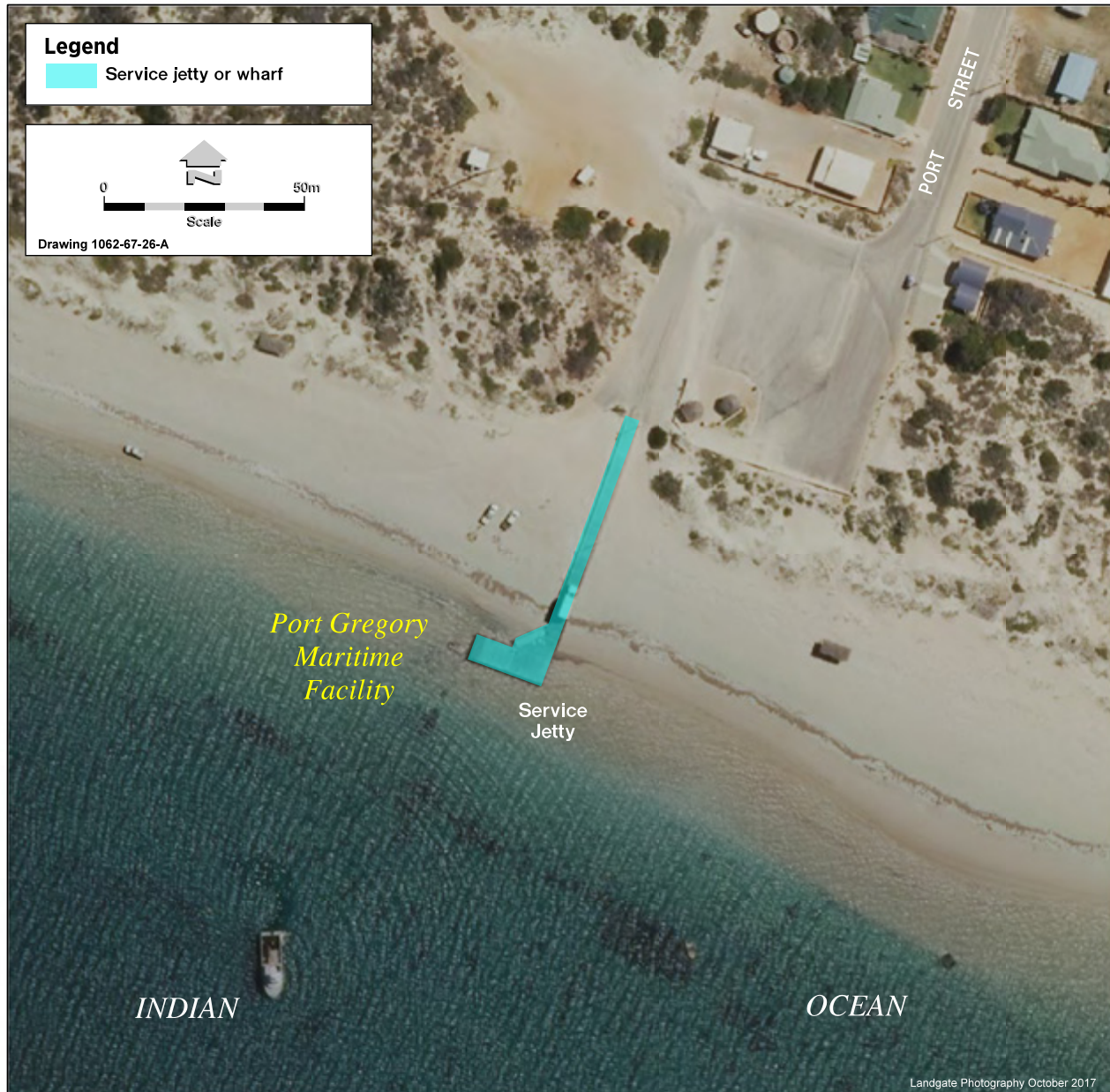




# Port Gregory Maritime Facility

For fees and charges for this facility please refer to Statewide fees.

## Vessel Accommodation Plan (Extract)



# Spoilbank Marina, Port Hedland

## Vessel Accommodation 2025-26

### RECREATIONAL / TOURISM / GOVERNMENT / FISHING VESSELS

Length of stay	Floating pen with walkway (Charged per metre of the pen length)	Floating alongside berth (Charged per metre of the vessel length)
12 months	\$ 736.00	\$ 736.00
3 months or more per month	\$ 67.15	\$ 67.15
1 month	\$ 110.40	\$ 110.40
1 week	\$ 33.10	\$ 33.10

### SERVICE VESSELS

Length of stay	Floating pen with walkway (Charged per metre of the pen length)	Floating alongside berth (Charged per metre of the vessel length)
12 months	\$ 956.80	\$ 956.80
3 months or more per month	\$ 87.30	\$ 87.30
1 month	\$ 143.50	\$ 143.50
1 week	\$ 43.05	\$ 43.05

For service vessel use of pen with walkway or alongside berth		
per day, per metre of the vessel length	\$	13.45

All fees quoted are inclusive of GST and should be paid in advance, unless otherwise specified in writing.  
Guidance note: For other fees and charges not listed above please refer to Statewide fees.

Vessel Accommodation Plan following page



Vessel Accommodation Plan (Extract)



**Legend**

- Floating pen with walkway
- Floating alongside berth
- A Jetty identifier
- 20 ← 1 Pen numbers
- Pen size

0 40m Scale

Drawing 1062-67-31A

# Swan Canning Rivers

## Barrack Street and Mends Street Jetties

Jetty permit	
1. For vessel for exclusive use of a berth for 12 months - the higher of \$5,304.85 and the result of the following calculation:	
per passenger calculated on the highest vessel passenger carrying capacity as surveyed	\$74.10
<b>PLUS</b>	
for vessel up to 35 metres in length	
higher of	\$9,547.70
or per metre of the vessel length	\$530.35
for vessel 35 metres in length or over	
per metre of the vessel length	\$848.75
<b>MINUS</b>	\$7,426.05

Guidance note: Exclusive berthing permits for Barrack Street, Mends Street and Burswood Jetties are issued for registered passenger carrying vessels only.

2. Sullage fee for vessel for which the item 1 fee has not been paid	
per pump out	\$108.05

## Burswood Jetty

Jetty permit	
For exclusive use of Berth 1 on event days and priority use at other times, for 12 months	\$17,608.35

Guidance note: Burswood Jetty Berth 2 is for use by commercial vessels. Berth 3 is for use by recreational vessels.

## Other Department of Transport managed jetties in the Swan Canning Rivers

Jetty permit	
For 12 months, per metre of the vessel length	\$99.80

All fees quoted are inclusive of GST and should be paid in advance, unless otherwise specified in writing.

Guidance note: A vessel must not stay alongside any service jetty or wharf in the Swan Canning Rivers for a period greater than 15 minutes at a time, unless otherwise specified within a permit.

Vessel Accommodation Plan following page



# Swan Canning Rivers

## Vessel Accommodation Plan (Extract)



Refer to larger location map on page 43

# Two Rocks Marina

## Vessel Accommodation 2025-26

Length of stay	Fixed pen without walkway (Charged per metre of the pen length)	Fixed pen with walkway (Charged per metre of the pen length)	Fixed alongside berth (Charged per metre of the vessel length)	Floating alongside berth (Charged per metre of the vessel length)	Floating pen with walkway (Charged per metre of the pen length)
12 months	\$ 515.20	\$ 588.80	\$ 588.80	\$ 736.00	\$ 736.00
3 months or more per month	\$ 47.00	\$ 53.70	\$ 53.70	\$ 67.15	\$ 67.15
1 month	\$ 77.25	\$ 88.30	\$ 88.30	\$ 110.40	\$ 110.40
1 week	\$ 23.15	\$ 26.45	\$ 26.45	\$ 33.10	\$ 33.10

All fees quoted are inclusive of GST and should be paid in advance, unless otherwise specified in writing.  
Guidance note: For other fees and charges not listed above please refer to Statewide fees.

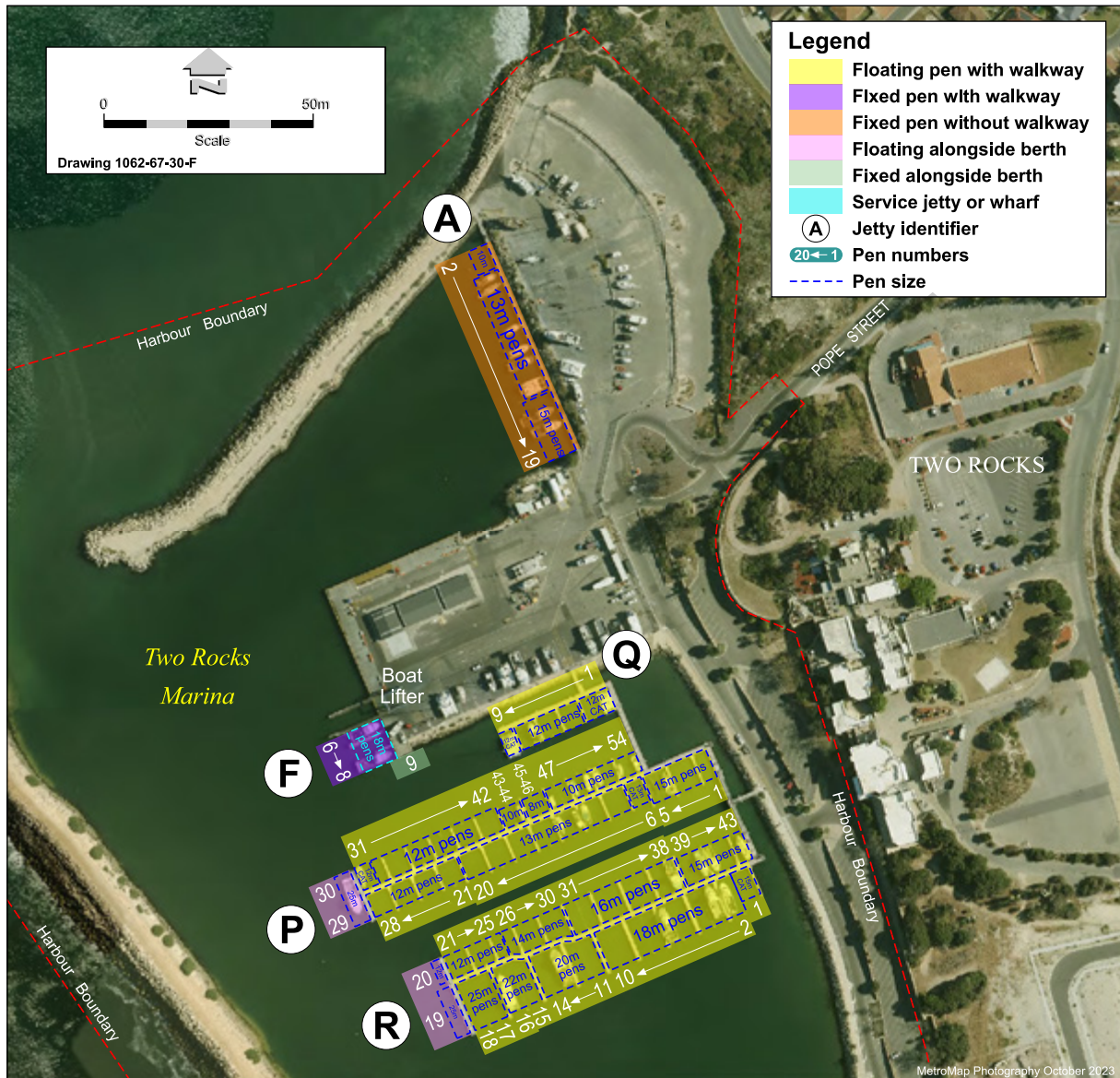
### Boat lifter, storage and maintenance

Full vessel lift, per metre of vessel	\$ 37.20
Short vessel lift, per metre of vessel - max 2 hrs	\$ 18.60
Environmental charge, per full lift only	\$ 26.45
Engine/Rudder lift, per hour per lift	\$ 198.95
Emergency call-out fee, per call-out	\$ 484.70
Out of hours lift, per lift (in addition to normal lift fees)	\$ 248.70
Forklift hire (inc Operator), during business hours, per hour	\$ 74.10
Water blasting service provided by staff, per blast	\$ 124.85
Water blaster hire, per metre of vessel	\$ 6.85
Hardstand fee, per day	\$ 37.00
Trailer boat storage, per day	\$ 5.80
Pallet storage, per pallet per week	\$ 5.30

Vessel Accommodation Plan following page



## Vessel Accommodation Plan (Extract)



# Fuel wharfage

Location	Cost
Albany Waterfront Marina	\$ 0.068 per litre
Albany (Emu Point) Boat Harbour	
Augusta Boat Harbour	
Bremer Bay Maritime Facility	
Bunbury (Casuarina) Boat Harbour	
Carnarvon Boat Harbour	
Cervantes Maritime Facility	
Denham Maritime Facility	
Esperance (Bandy Creek) Boat Harbour	
Exmouth Boat Harbour	
Fremantle Fishing Boat Harbour	
Green Head Maritime Facility	
Hillarys Boat Harbour	
Hopetoun Maritime Facility	
Jurien Boat Harbour	
Kalbarri Maritime Facility	
Lancelin Maritime Facility	
Leeman Maritime Facility	
Onslow (Beadon Creek) Maritime Facility	
Point Samson (Johns Creek) Boat Harbour	
Port Denison	
Port Gregory Maritime Facility	
Swan and Canning Rivers - Barrack Street Jetty	
Two Rocks Marina	





*Green Head Maritime Facility*

# Maritime facilities managed by DoT





# Swan Canning Rivers Location Map



## Contact details

For all general enquiries or to provide feedback please email us at [facilityfees@transport.wa.gov.au](mailto:facilityfees@transport.wa.gov.au)

### **Fremantle Fishing Boat Harbour**

For queries regarding:

- Burswood Jetty
- Challenger Boat Harbour
- Fremantle Fishing Boat Harbour
- Jervoise Bay Boat Harbour and
- Swan Canning Rivers (except Barrack Street Jetty)

### **Fremantle Fishing Boat Harbour**

14 Capo D'Orlando Drive

South Fremantle WA 6162

Phone: (08) 9431 1020

Email: [ffbh@transport.wa.gov.au](mailto:ffbh@transport.wa.gov.au)

### **Hillarys Boat Harbour**

For queries regarding:

- Barrack Street Jetty
- Hillarys and
- Lancelin

### **Hillarys Boat Harbour**

86 Southside Drive

Hillarys WA 6025

Phone: (08) 9216 8530

Email: [hillarys@transport.wa.gov.au](mailto:hillarys@transport.wa.gov.au)

### **Two Rocks Marina**

For queries regarding:

- Two Rocks Marina

### **Two Rocks Marina**

1 Pope Street

PO Box 384

Two Rocks WA 6037

Phone: 1300 863 308

Email: [tworocksmarina@transport.wa.gov.au](mailto:tworocksmarina@transport.wa.gov.au)

### **Pilbara region**

For queries regarding

- Point Samson and
- Onslow

### **Pilbara region**

3-5 Welcome Road

PO Box 429

Karratha WA 6714

Phone: (08) 6551 6800 or

Phone: (08) 9216 8230 (Accounts)

Email: [pilbara@transport.wa.gov.au](mailto:pilbara@transport.wa.gov.au)

### **Exmouth branch**

For queries regarding:

- Coral Bay and
- Exmouth

### **Exmouth branch**

21 Maidstone Crescent

Exmouth WA 6707

Phone: (08) 9216 8220

Email: [gascoyne@transport.wa.gov.au](mailto:gascoyne@transport.wa.gov.au)

### **Carnarvon branch**

For queries regarding:

- Carnarvon and
- Denham

### **Carnarvon branch**

Small Boat Harbour Road,

Carnarvon WA 6701

Phone: (08) 9216 8230

Email: [gascoyne@transport.wa.gov.au](mailto:gascoyne@transport.wa.gov.au)

### **Mid West region**

For queries regarding

- Cervantes
- Geraldton
- Green Head
- Jurien
- Kalbarri
- Leeman
- Port Denison and
- Port Gregory

### **Mid West region**

(Geraldton office)

23 Eastward Road

Wonthella WA 6530

Phone: (08) 9216 8170

A/hrs mobile: 0472 810 169

Email: [midwest@transport.wa.gov.au](mailto:midwest@transport.wa.gov.au)

### **South West region**

For queries regarding

- Augusta and
- Bunbury

### **South West region**

24 Wellington Street

Bunbury WA 6230

Phone: (08) 9216 8200

Email: [southwest@transport.wa.gov.au](mailto:southwest@transport.wa.gov.au)

### **Great Southern region**

For queries regarding

- Albany Emu Point
- Albany Waterfront Marina
- Bremer Bay
- Esperance and
- Hopetoun

### **Great Southern region**

178 Stirling Terrace

Albany WA 6330

Phone: (08) 9216 8520

Email: [greatsouthern@transport.wa.gov.au](mailto:greatsouthern@transport.wa.gov.au)