



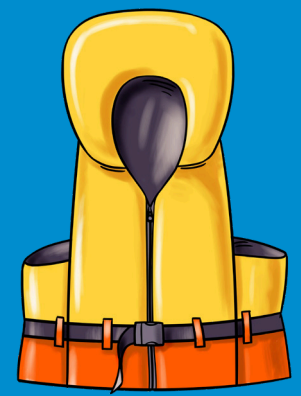
VESSEL SAFETY EQUIPMENT

REGISTRABLE VESSEL: Vessels including sailing vessels that are or can be propelled by mechanical power.

NON-REGISTRABLE VESSEL: Tenders and sailing dinghies.



Recreational Skipper's Ticket
The skipper of a recreational vessel, powered by a motor greater than 6 horsepower must hold an RST.



Lifejacket Carriage
A lifejacket, as indicated in the table opposite, must be carried for every person on board.

Vessels smaller than 4.8m

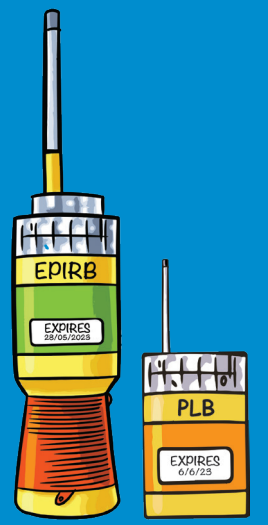
Vessels 4.8m and larger



Lifejacket Wearing
As indicated in the table opposite.

Children older than one and younger than 12

Personal Water Craft



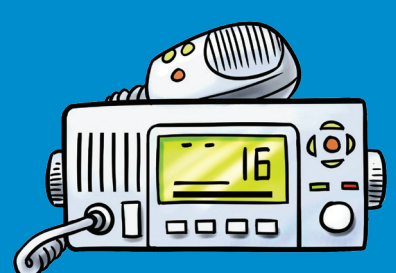
Distress Beacon (in-date)
A GPS enabled 406 MHz EPIRB
OR
if worn by at least one person, a GPS enabled PLB. Distress beacons must be in-date and registered with AMSA.



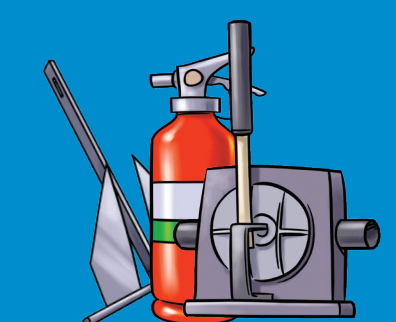
Red and Orange Flares (in-date)
At least two hand held red flares and two hand held orange flares must be carried.



Electronic Visual Distress Signals
An electronic signalling device may be carried in lieu of flares **IF** a GPS enabled EPIRB or PLB (must be worn) is also carried.



Marine Radio
A HF or VHF marine radio on any Registrable Vessel when operating **more than 4 nautical miles** from shore in unprotected waters.



Recommended Additional Safety Equipment
It is recommended an anchor and line, a fire extinguisher and a means of removing water be carried.

PROTECTED WATERS
Includes rivers, lakes, estuaries, harbours and waters within 400 metres from the shore in unprotected waters but excludes Cambridge Gulf and Lake Argyle.

UNPROTECTED WATERS
Beyond 400 metres from the shore.

Registrable Vessels	Non-registrable Vessels	Registrable Vessels	Non-registrable Vessels
✓	NOT REQUIRED	✓	NOT REQUIRED
✓ Minimum Level 100 MUST BE CARRIED	RECOMMENDED	✓ Minimum Level 100 MUST BE WORN	✓ Minimum Level 50S MUST BE WORN
✓ Minimum Level 100 MUST BE CARRIED	RECOMMENDED	✓ Minimum Level 100 MUST BE CARRIED	✓ Minimum Level 50S MUST BE CARRIED
✓ Minimum Level 100 MUST BE CARRIED	RECOMMENDED	✓ Minimum Level 100 MUST BE WORN	✓ Minimum Level 50S MUST BE WORN
✓ Minimum Level 50S MUST BE WORN	—	✓ Minimum Level 50S MUST BE WORN	—
RECOMMENDED	RECOMMENDED	✓	✓
RECOMMENDED	RECOMMENDED	✓	✓
RECOMMENDED	RECOMMENDED	REQUIRED beyond 4 nautical miles RECOMMENDED within 4 nautical miles	RECOMMENDED
RECOMMENDED	RECOMMENDED	RECOMMENDED	RECOMMENDED

