

Expansion of the Exmouth Harbour

Public Forum

10th & 11th June 2008

Exmouth Recreation Centre
6.30pm - 8.30pm

Contents

- Project overview
- Study area
- Steering committee
- Drivers for change
- Process to date – Expression of Interest (EOI)
- Consultation process
- Future considerations
- Timeline & next steps

Project Overview

- The Department for Planning and Infrastructure has responsibility for Exmouth Boat Harbour.
- The operational focus of the harbour is changing and there are a number of key factors influencing its future.
- Exmouth Boat Harbour is operating at full capacity and demand for harbour berthing facilities remains at a level that cannot be met. A separate project is underway to consider the need for expansion for recreational uses in the existing harbour.
- Expressions of interest received from offshore and tourism industries for the self funded expansion of the Exmouth Boat Harbour within the harbour reserve.

Project Objective

- To engage stakeholders and the Exmouth community in a consultation process to assess the opportunity for a potential expansion of the Exmouth Boat Harbour.

Study Area

- The study area for this expansion (shown below) is the extent of the harbour reserve that is managed by DPI.



Steering Committee

- Hon Vince Catania MP (Chairperson) - Member for Mining and Pastoral Region
- Hon Bob Kucera MLA - Member for Yokine
- Mr Phil Anastasakis - Shire of Exmouth
- Mrs Ronnie Fleay - Shire of Exmouth
- Mr Stephen Yule - Gascoyne Development Commission
- Mr Barry Sullivan - Exmouth Chamber of Commerce
- Mr Glenn Musto - Department for Planning and Infrastructure
- Mr Peter McNally - LandCorp
- Mr Peter Sewell - Main Roads WA
- Mr Steve Jenkins - Department for Planning and Infrastructure
- Mr Nich Grundy - Department for Planning and Infrastructure

Drivers for Change

- Limited vessel size capacity of the existing harbour
- Substantial growth in large charter and deep sea sport fishing vessels serving a growing tourism market at Ningaloo Reef.
- Demand for access to additional harbour facilities in the North West servicing extensive growth in the offshore oil and gas industries
- Ningaloo reef's emergence as a new and attractive destination for Super Yachts and Cruise Ships.

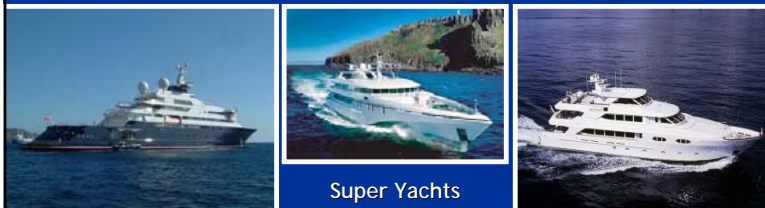
Drivers for change - Growth in charter and maxi sized cruising vessels:

Tourism:

- Recently opened resort at the harbour has resulted in requests for new pens to accommodate larger charter and deep sea sport fishing vessels ranging from 20-30m.

Super Yacht base:

- Ningaloo reef is a new and attractive destination for super yachts.
- Contributing to the local economy - services, tourism, fuel, food, etc.



Maxi-sized cruising vessels

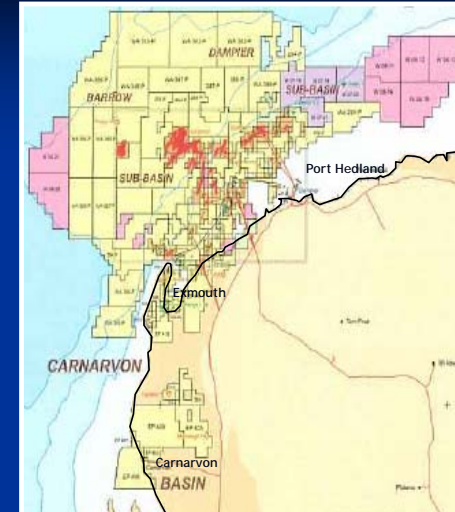


Drivers for change

Offshore oil and gas:

- Australia provides 9 per cent of the world production of LNG gas of 82 million tonnes;
- Forecast is for this to double by 2010;
- By early next decade there should be five floating processing, storage and off take vessels working off the North West Cape in the Exmouth Sub Basin.
- The value of oil and gas production to Woodside operating in the North-West Shelf during 2007 was \$431M.

Drivers for change – Offshore Oil & Gas Exploration Permits



Drivers for change

Offshore Oil and Gas - Maritime Infrastructure Requirements:



Hardstand, slip and storage facilities



Mooring and lay down facilities

Drivers for change

Offshore Oil and Gas - King Bay: Dampier





Drivers for change – Destination for cruise ships

Destination for cruise ships:

- Growth in the number of cruise ships visits to port.
- Contributing to the local economy - tourism, services, food, etc.
- Current arrangements limited by seasonal conditions.
- Potential for small to medium size vessels to berth.

The image shows a large white cruise ship with a red funnel docked at a pier. In the foreground, a smaller white and orange boat is also docked. The water is calm, and the sky is overcast.

Future Expansion

- Must offer a mix of uses:
 - Tourism - charter boats, super yachts and cruise ships
 - Offshore oil and gas - support vessels, rig tenders.
 - Commercial - chandlery, offices, marine services.
 - Recreational - berthing for large cruising vessels and yachts
- Privately funded
- Offering some access to the public - viewing areas, seating, fishing, paths, walking, cycling.

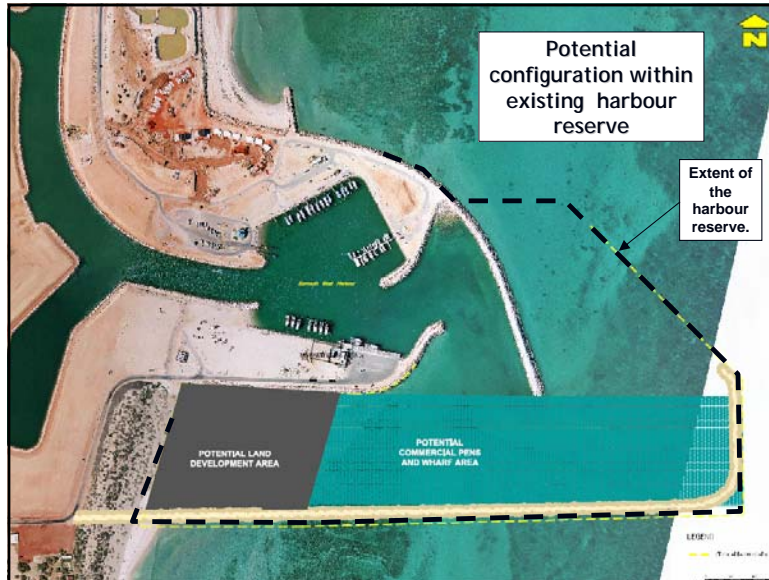
Expression of Interest (EOI) Process to Date

- Many enquiries received from companies wanting to access the harbour for a range of purposes.
- The harbour could not accommodate the number and size of the vessels sought.
- DPI invited Expressions of Interest (EOI's)

Criteria for Assessing EOI's

Demonstrate an understanding of the operational and project issues related to the development	Evidence of financial capacity and proven suitable marine experience to produce the detailed proposal	Demonstrate development, management and commercial marine industry expertise available to the applicant
---	---	---

- DPI does not have any set ideas for the design and functionality of future infrastructure.
- If provided new infrastructure will operate on a common user basis with land and water facilities available to any vessels or companies without prejudice.



What's in it for the people of Exmouth?

- Economic growth and stronger commercial base.
- Business and (year round) employment opportunities.
- Diversification of local industry.
- Attracting investment to the area.
- Offers strong and viable industry links.
- Improved public amenity.
- Potential for expanded community infrastructure.
- Improved boating amenity and diversity.
- Key element of planned and sustainable growth - complementing the Exmouth Structure Plan.
- Improved harbour facilities.

Timeline & Next Steps

