

Public water ski areas

- 1 **Swan River:** Water skiing is permitted between the hours of 8am and sunset only.
- 2 **Canning River:** Water skiing is permitted between the hours of 9am and sunset only.
- 3 **Mt Pleasant water ski area:** No turning within 100 metres of the Mount Henry Bridge.

Non-public water ski areas

- 4 **South Perth high speed commercial water sports area:** This area is set aside for Department approved commercial water sport activities only, 8 knots applies to all other vessels.
- 5 **Western Australian powered water sports area:** This area is set aside for approved aquatic events. The area is closed at all times to all vessels (including paddle craft) unless approved by the Department.

Speed restrictions

- 6 **Open speed area**
Sunset to sunrise: Vessels must not exceed 10 knots in any open speed area of the Swan and Canning rivers between sunset and sunrise.
- Canning River:** Vessels must not exceed 5 knots upstream of the Canning Bridge except within the Mount Pleasant water ski area between the hours of 9am and sunset.

Vessels 10 metres or more in length

Vessels 10 metres and over must not exceed 8 knots in the designated areas in Matilda Bay.

Personal water craft (PWC)

- 8 **Freestyling**
PWC freestyling is prohibited in the Swan and Canning rivers except in the designated PWC freestyling area in South Perth. Other vessels are not permitted in this area.

Closed waters to PWC

- 9 **Swan River:** all waters upstream of the Windan Bridge are closed to PWC (see other map).

- 10 **Canning River:** All waters upstream of Salter Point are closed to PWC.

- 11 **Marine parks:** All waters in the Milyu, Pelican Point and Alfred Cove marine parks are closed to PWC.

Closed waters areas

- 12 **All designated waters at Point Direction, Point Walter, Matilda Bay, Deepwater Point, Freshwater Bay and Preston Point** are closed to motorised vessels.
- The designated PWC freestyling area in South Perth is closed to all vessels other than PWC.



Fremantle Traffic Bridge (see Bridges inset)

- 13 **Skippers are advised that large vessels may at times navigate downstream through the southern span of the Fremantle Traffic Bridge against the flow of traffic.** This may occur whilst access through the central and northern navigable spans are restricted due to tidal influences or closures due to ongoing works. Skippers are advised to keep a safe speed and lookout and navigate with caution when transiting upstream through the southern span of the Fremantle Traffic Bridge.

Crabbing restrictions

- 14 **The placement of crab drop nets in any fairway or channel is prohibited.**

Canning River crabbing restrictions

It is an offence to place crab drop nets in the below restricted areas during the nominated times and offenders can be fined.

- 8 knots area: All waters contained within the marked restricted area from 4am to 9am.
- 5 knots area: All waters of the Deepwater Point water ski area from 9am to sunset during weekends and public holidays.

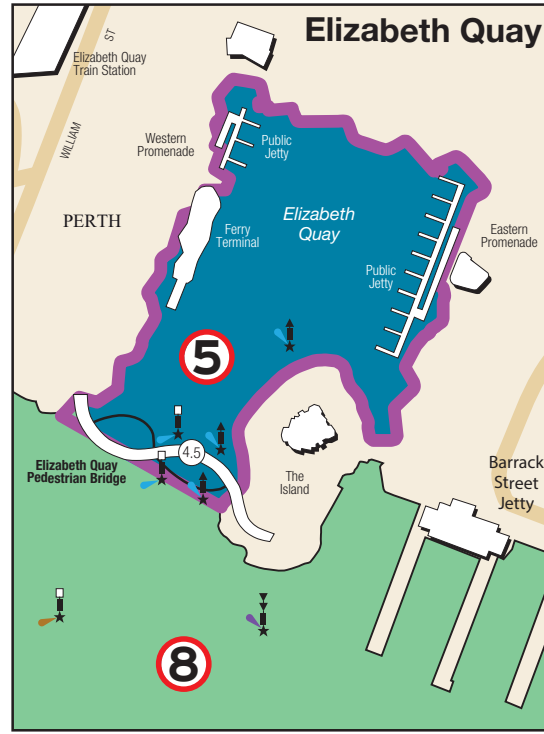
Narrows launching ramp - PWC only

- 15 **The launching ramp at the Narrows PWC area is only for PWCs, no boats are allowed to use ramp for launching or retrieving (except for approved commercial operators).**

General speed restrictions

It is illegal, in any navigable waters, to drive a motor boat at a speed exceeding eight knots, water ski or para-sail:

- through an arch of a bridge;
- in or through a mooring area;
- within 15 metres of a vessel underway;
- within 50 metres of –
 - (i) a moored vessel;
 - (ii) a person in the water;
 - (iii) a jetty or wharf;
 - (iv) a river bank or low water mark.



Boaters are asked to be mindful of noise in this area

Courtesy moorings

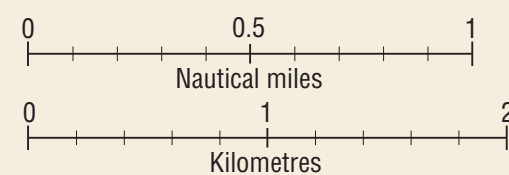
Red courtesy moorings have a four-hour time limit between 7am and 7pm.

Vessels using courtesy moorings must not exceed the maximum vessel length specified on the mooring buoy.

Kite boarding and windsurfing

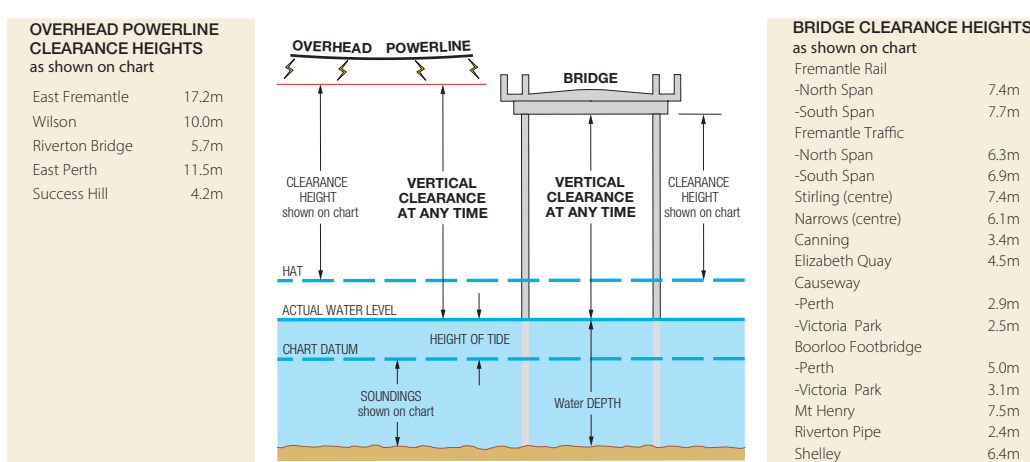
In certain conditions these small, fast moving sailing craft may be difficult to see and skippers need to maintain a proper lookout at all times and take appropriate action to avoid collisions.

All windsurfers and kite boarders have a duty of care to ensure their activities are conducted with regard to the prevailing conditions and circumstances and take appropriate action to avoid collisions.



Bridge and powerline clearances

Clearance heights shown are in metres above highest astronomical tide (HAT). Actual clearance will vary depending on the tide and/or flood level. The height of the tide throughout the day will vary depending on astronomical and meteorological conditions.



Swan Canning Riverpark

Not to be used for navigation
For more detailed information, refer to the Department of Transport and Major Infrastructure's nautical chart Swan and Canning Rivers WA 898



DECKEE



Legend

- Open speed (See note 6)
 - 5 knot area
 - 6 knot area
 - 8 knot area
 - 8 knots for vessels over 10m only
 - Water ski area
 - Non public water ski area
 - PWC freestyle area
 - Swimming prohibited area
 - Closed waters Motorised vessels
 - Courtesy mooring
 - Fuel, Boat ramp
 - Picnic site
 - Public toilet
 - GPS validation marker
 - Rock awash
 - Underwater rock
 - Breakers
- Indicates safe water to the north
 - Indicates safe water to the south
 - Indicates safe water to the east
 - Indicates safe water to the west
 - Indicates safe water to the west
 - Beacon, port, starboard
 - Spar buoy, port, starboard
 - Pillar buoy, port, starboard
- Synchronised lights
 - Navaid with standalone light
 - Navaid with synchronised A light (2n mile)
 - Navaid with synchronised B light (2n mile)
 - Navaid with synchronised C light (2n mile)

Synchronised navigation marker lighting

Navigating at night requires special care and attention. Vessels operating at night, whether at anchor or underway must carry and exhibit the correct lights.

To assist with night navigation the Department has installed synchronised lighting on navigational aids. These patterns are identified above and indicate groups of markers or the recommended track for vessels drawing two metres.

Salter Point
PWC are prohibited upstream of Salter Point.

